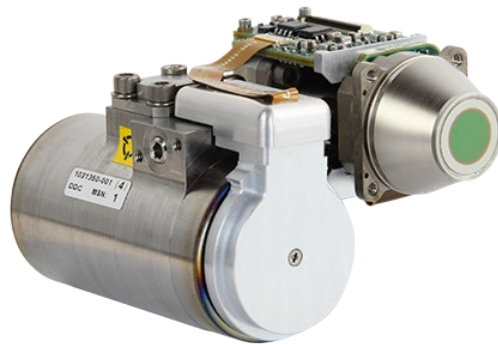




**SIERRA-OLYMPIA**  
TECHNOLOGIES INC.



## **HEXABLU QUICK START GUIDE**

603 Portway Avenue, Suite 100 | Hood River, OR 97031 | 855.222.1801 | [www.sierraolympia.com](http://www.sierraolympia.com)

Product Export Classification Control Number (ECCN): 6A003.b.4.a  
This document is provided for integration purposes only and does not contain export-controlled technology.

## Table of Contents

1	Safety Conditions .....	1
2	Export Notice.....	1
3	Reference Documents.....	2
4	Tools and Materials .....	2
5	Introduction.....	2
6	Remove from packaging .....	2
7	Interfacing with HexaBlu.....	4
8	Revision History .....	4

## Table of Figures

Figure 1	HaxaBlu in packaging .....	2
Figure 2	Sensor cover screws.....	3
Figure 3	Front of HexaBlu Shipping Frame.....	3

## 1 SAFETY CONDITIONS

Read all instructions prior to use.

Observe ESD (electrostatic discharge) precautions when handling.

The camera requires reasonable thermal sinking when operating. Use stirred air and conduction to outside environment when installed in an enclosure.

The camera must be operated within the environmental limits.

Repairs and service are to be completed only by Sierra Olympia Technologies. Please refer any issues to your sales representative.

## 2 EXPORT NOTICE

Product Export Classification Control Number (ECCN): 6A003.b.4.a

This document is provided for operation purposes only and does not contain export-controlled technology.

### 3 REFERENCE DOCUMENTS

Document Number	Document Title
1043862	Customer Electrical Interface Control Document (ICD) for the HexaBlu Baseline OEM Camera Core
1031343	ICD, Micro Camera Core Assembly

### 4 TOOLS AND MATERIALS

Part Number	Description
70-30028	FPC, 45pos. .3mm pitch 6inLG Same Side (Molex manufacturer PN 150150645)

### 5 INTRODUCTION

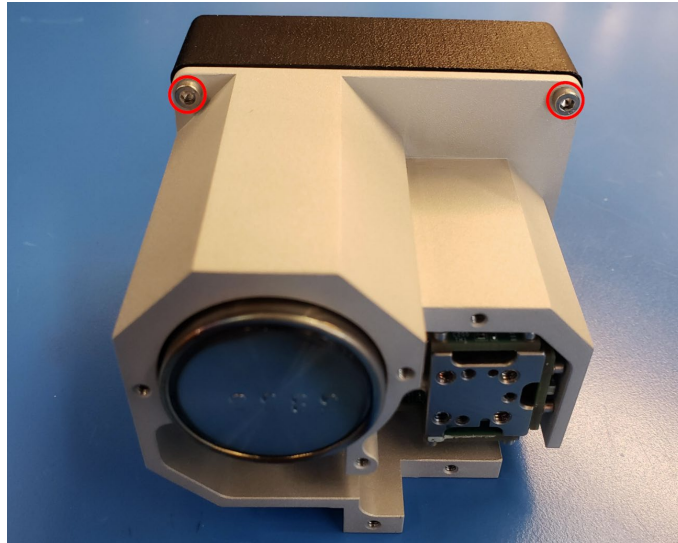
The HexaBlu is a six-micron high operating temperature mid-wave infrared sensor. This quick start guide will cover removing the sensor from packing and where to connect to the camera.

### 6 REMOVE FROM PACKAGING



*Figure 1 HaxaBlu in packaging*

Remove four M2.5 8mmLg screws from the sensor cover, lower screws not shown in Figure 2.



*Figure 2 Sensor cover screws*

Remove four 2-56 3/16inlg screws from the front



*Figure 3 Front of HexaBlu Shipping Frame*

Slide sensor out, gripping the cooler gently (cooler shown on the left of Figure 3). Then remove the black FPA cap.

## 7 INTERFACING WITH HEXABLU

The input/output connector on the HexaBlue is a Molex 50-2598-4593 see DRS Electrical ICD for pin out. The mating FPC cable has been provided, manufacturer PN 15015-0645.

## 8 REVISION HISTORY

Revision	Date	Description	ECO
Rev A	2023-05-11	Initial Release	1308