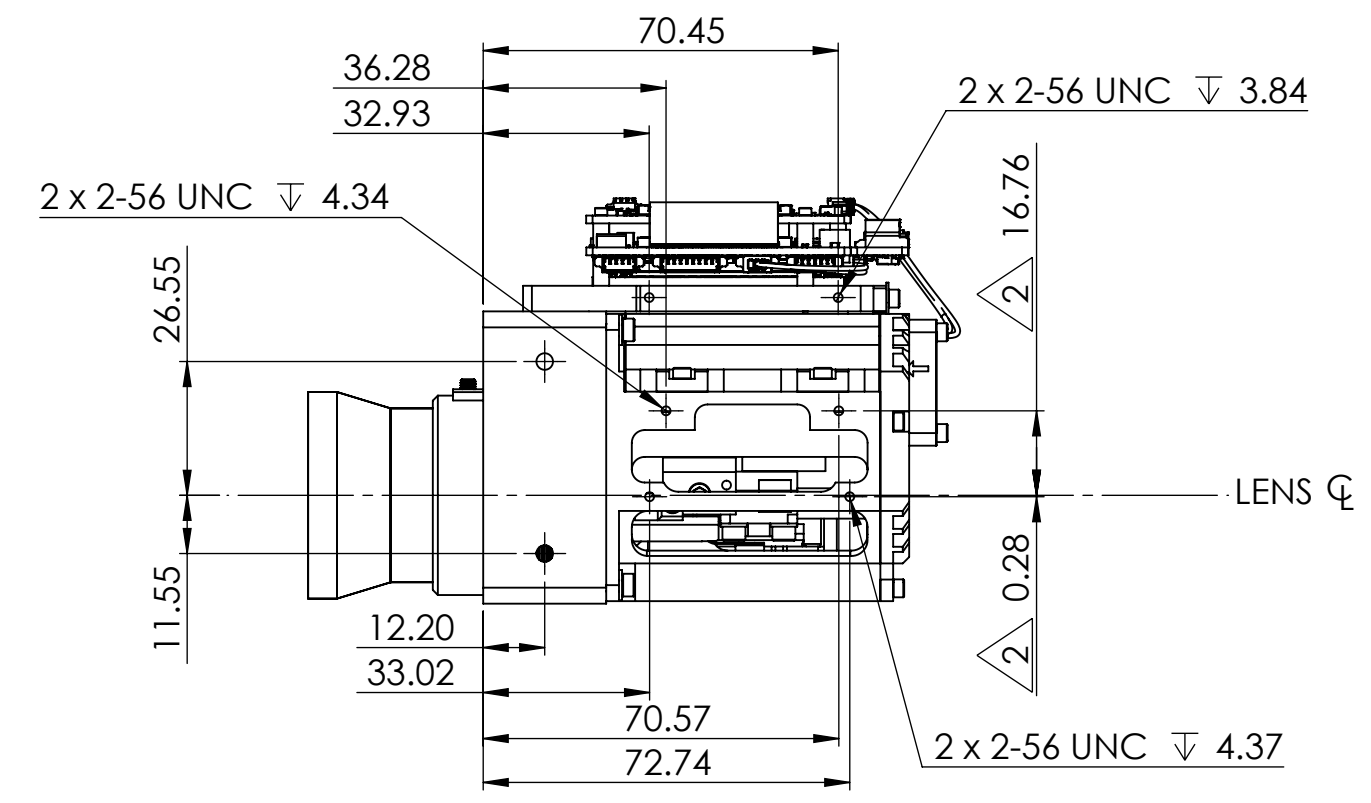
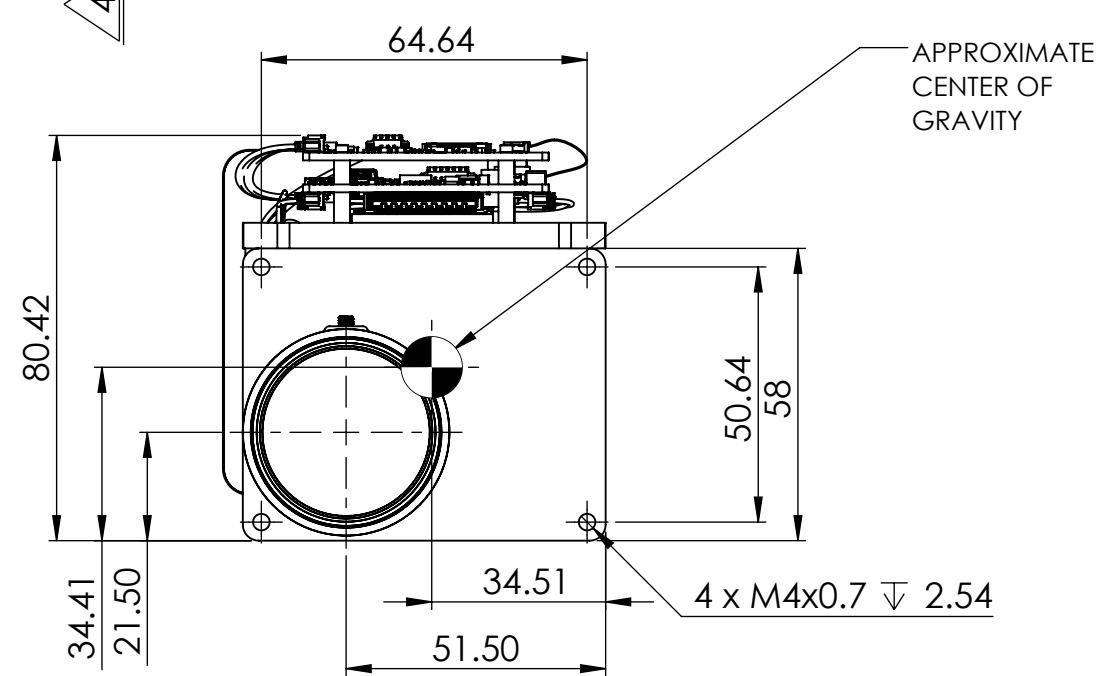


- NOTES:
1. WHEN MOUNTING CAMERA USE PRIMARY HOLES ON LENS MOUNT. SECONDARY HOLES ARE AVAILABLE ON SENSOR FRAME FOR ADDITIONAL SUPPORT AND FOR MOUNTING ACCESSORIES.
 2. DUE TO VARIATION IN ALIGNMENT AND MANUFACTURING TOLERANCES ALL SECONDARY MOUNTING HOLES HAVE VARIABLE LOCATION WITH RESPECT TO PRIMARY MOUNTING HOLES +/- 0.5mm.
 3. OVERALL THERMAL DISSIPATION REQUIREMENT IS APPROX. 11 WATTS. PRIMARY HEATSINKING SURFACES INDICATED
 4. OVERALL LENGTH DEPENDENT ON FOCUS POSITION, -2mm/+3mm
 5. FOR CONNECTOR INFORMATION, REFERENCE ELECTRICAL ICD DOC NO 20-70005
 6. APPROXIMATE VENTUS HD6 30MM MASS = 685g



REVISIONS					
ZONE	REV.	DESCRIPTION	ECO	DATE	ENGINEER
	A	INITIAL RELEASE	1308	2023-05-23	D.KAMINSKI

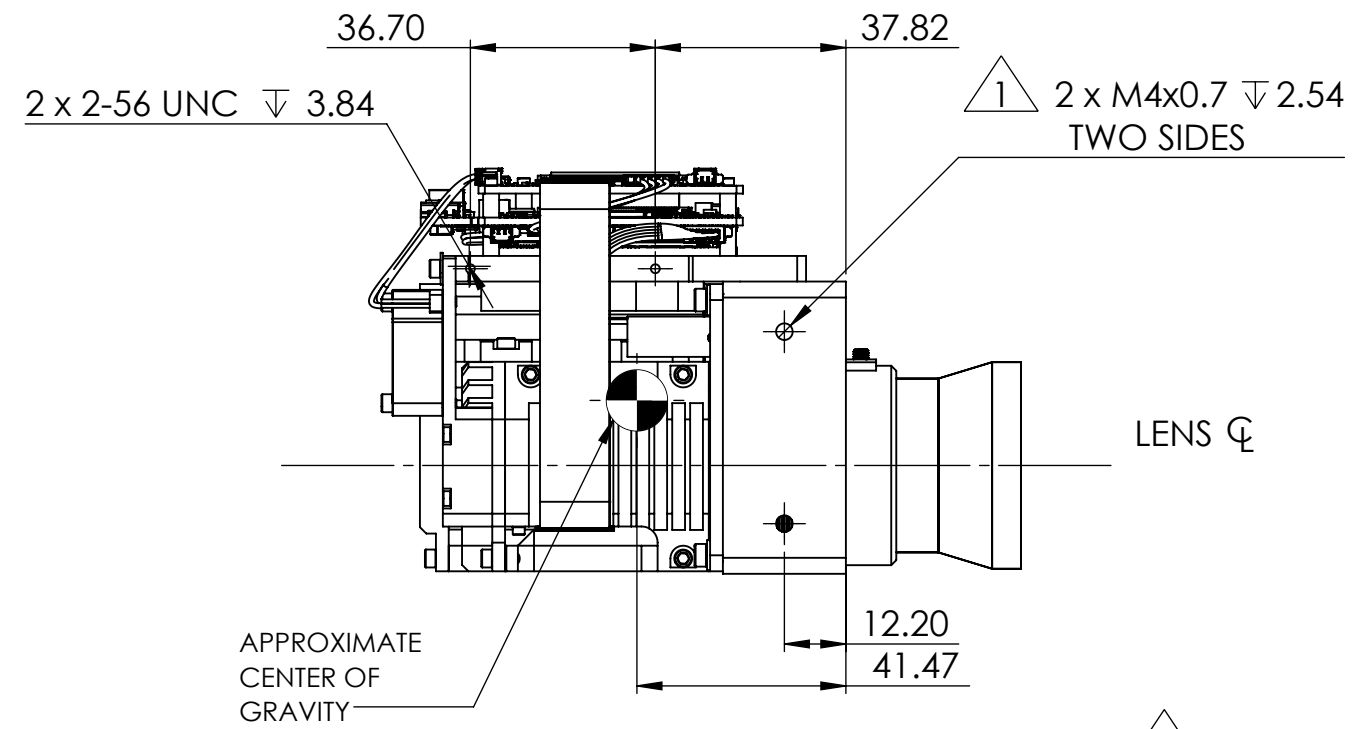
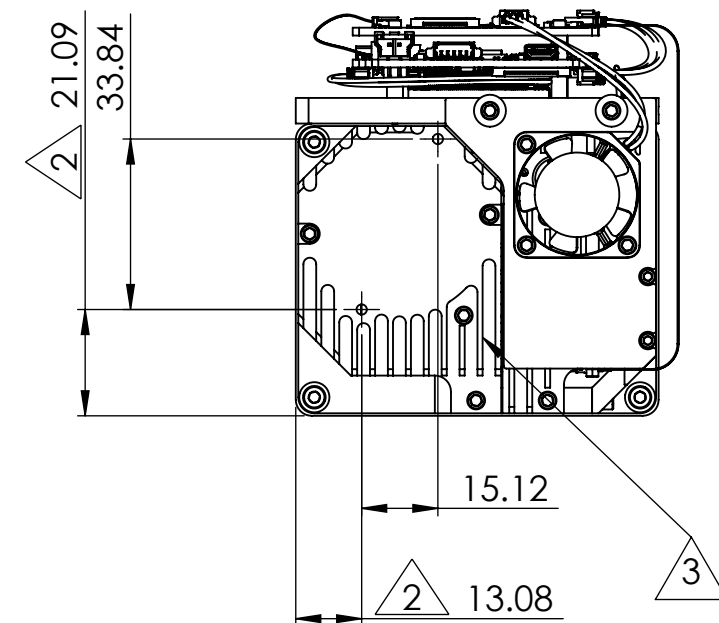
Product Export Classification Control Number(ECCN): 6A003.b.4.a This document is provided for integration purposes only and does not contain export-controlled technology	PROPRIETARY AND CONFIDENTIAL THE INFORMATION CONTAINED IN THIS DRAWING IS THE SOLE PROPERTY OF SIERRA OLYMPIA TECHNOLOGIES, INC. ANY REPRODUCTION IN PART OR AS A WHOLE WITHOUT THE WRITTEN PERMISSION OF SIERRA OLYMPIA TECHNOLOGIES, INC. IS PROHIBITED.	DIMENSIONS ARE IN MILLIMETERS TOLERANCES: +/- 0.254mm (0.01in) +/- 1deg EXCEPT WHERE NOTED.	CAD CONTROLLED PART, THE NOMINAL PART GEOMETRY IS CONTROLLED BY THE 3D CAD PART FILE. DO NOT SCALE DRAWING	Sierra-Olympia Tech., Inc.	
				DESCRIPTION: Mechanical ICD, Ventus HD6 30mm	
			SIZE B	DRAWN BY: D.KAMINSKI	SHEET 1 OF 2
			DRAWING NUMBER: 20-70004		Rev. A

4

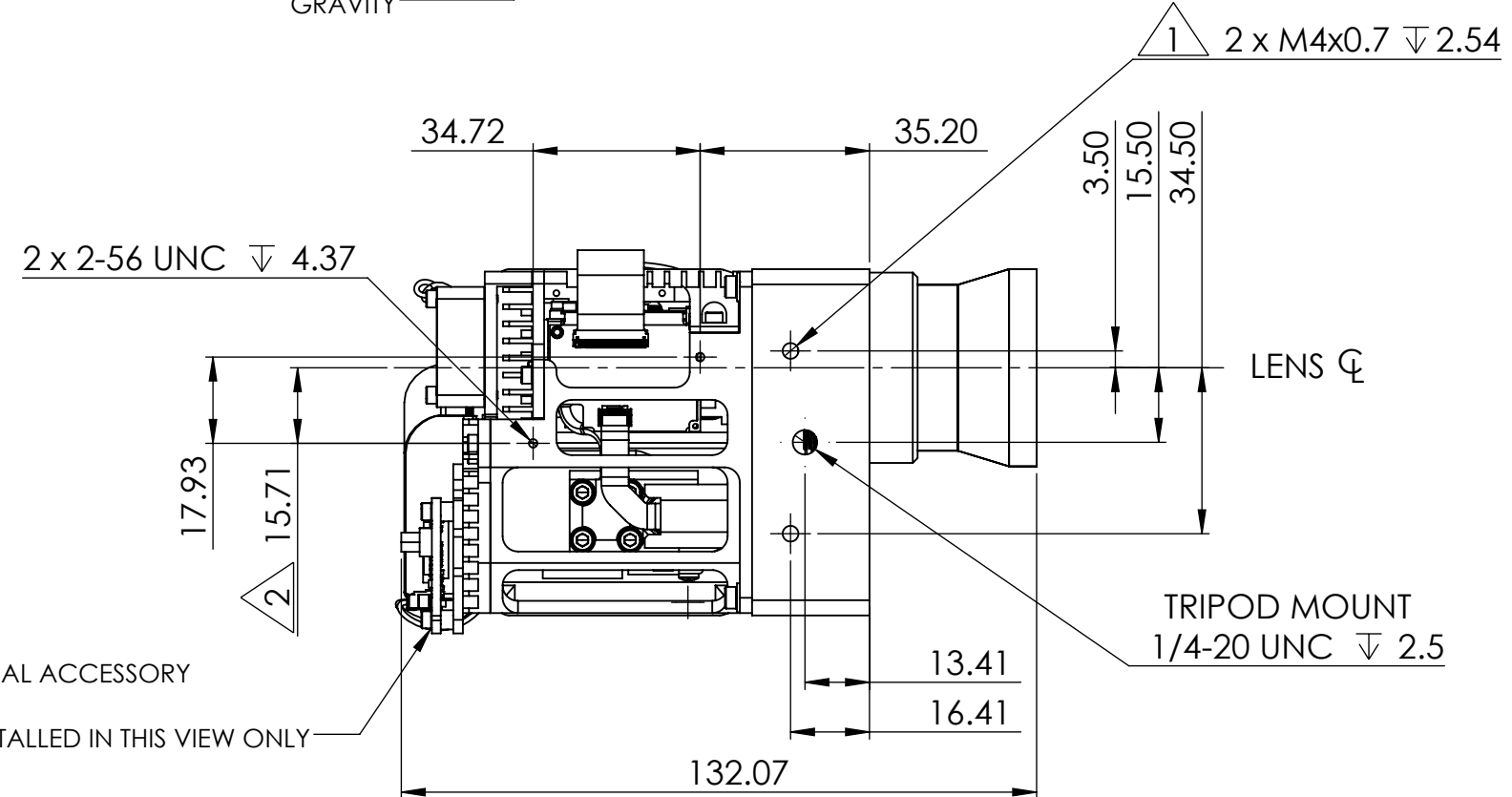
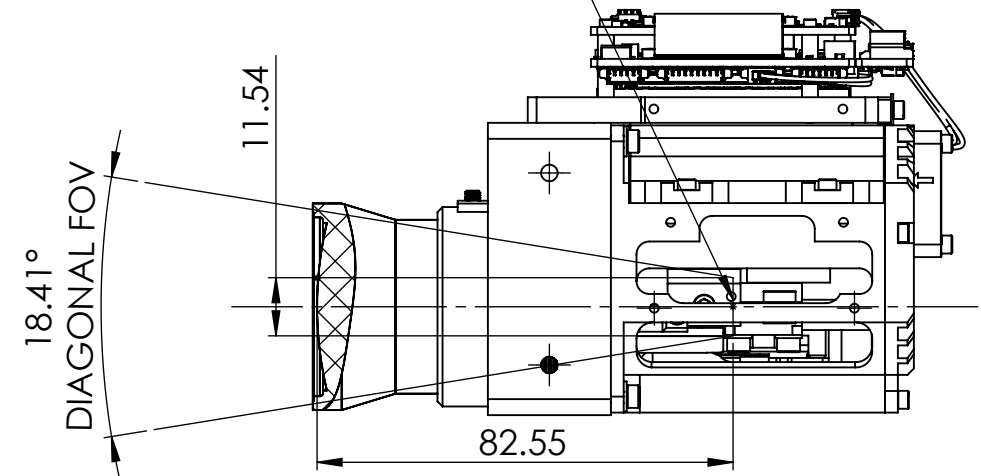
3

2

1



ENTRANCE PUPIL POSITION



HD-SDI OPTIONAL ACCESSORY
PN: 60-40058
SHOWN AS INSTALLED IN THIS VIEW ONLY

Product Export Classification
Control Number(ECCN):
6A003.b.4.a
This document is provided
for integration purposes only
and does not contain
export-controlled
technology

PROPRIETARY AND CONFIDENTIAL
THE INFORMATION CONTAINED IN
THIS DRAWING IS THE SOLE
PROPERTY OF SIERRA OLYMPIA
TECHNOLOGIES, INC. ANY
REPRODUCTION IN PART OR AS A
WHOLE WITHOUT THE WRITTEN
PERMISSION OF SIERRA OLYMPIA
TECHNOLOGIES, INC. IS
PROHIBITED.

DIMENSIONS ARE IN MILLIMETERS
TOLERANCES: +/- 0.254mm (0.01in)
+/- 1deg EXCEPT WHERE NOTED.
MATERIAL:
N/A
FINISH:
N/A

CAD CONTROLLED PART, THE
NOMINAL PART GEOMETRY IS
CONTROLLED BY THE 3D CAD PART
FILE.
DO NOT SCALE DRAWING

Sierra-Olympia Tech., Inc.
DESCRIPTION:
Mechanical ICD, Ventus HD6
30mm

SIZE **B** DRAWN BY: D.KAMINSKI SHEET 2 OF 2

DRAWING NUMBER: 20-70004 Rev. A

4

3

2

1

C

C

B

B

A

A