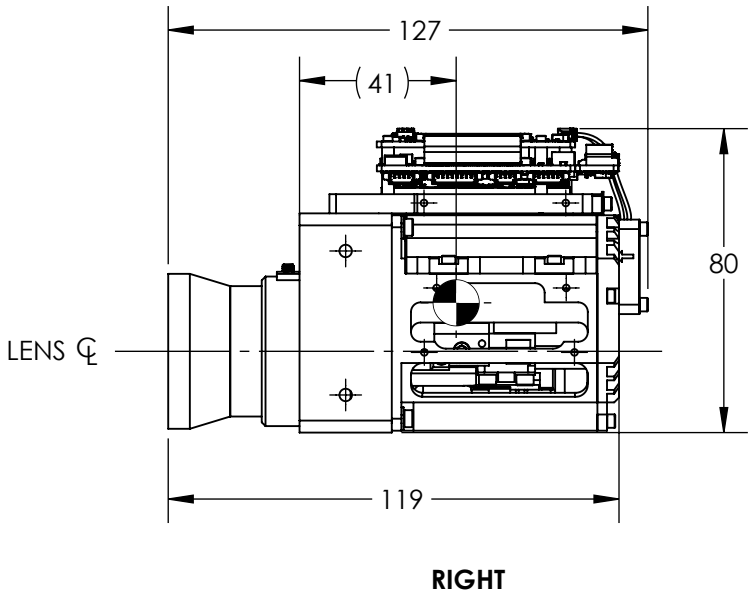
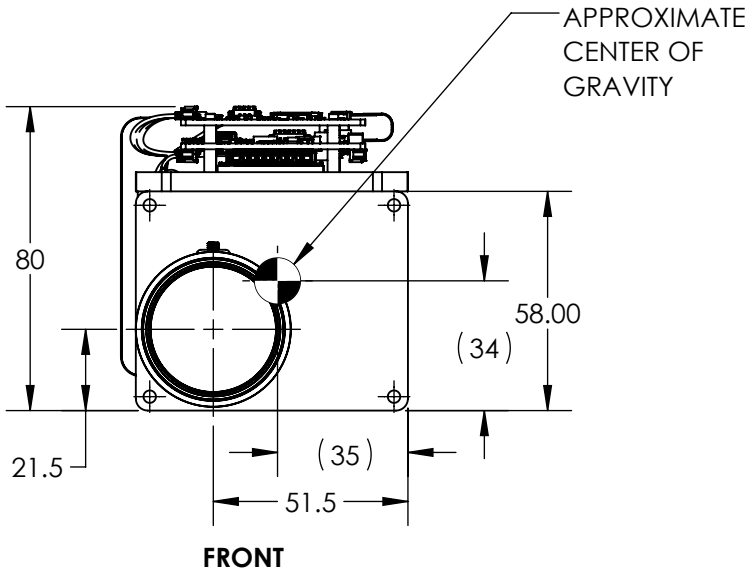
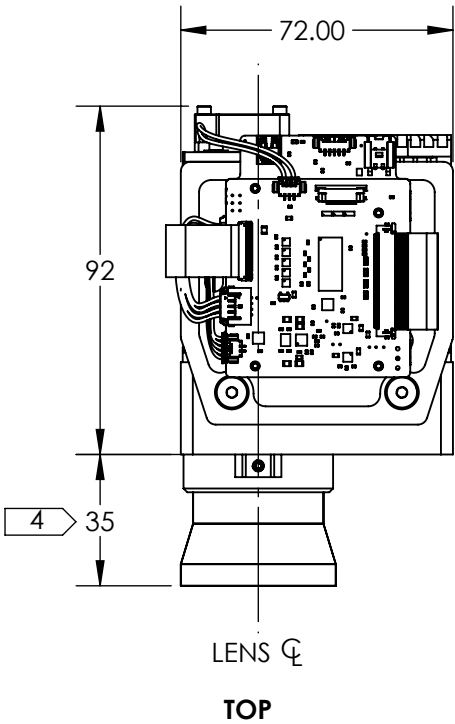
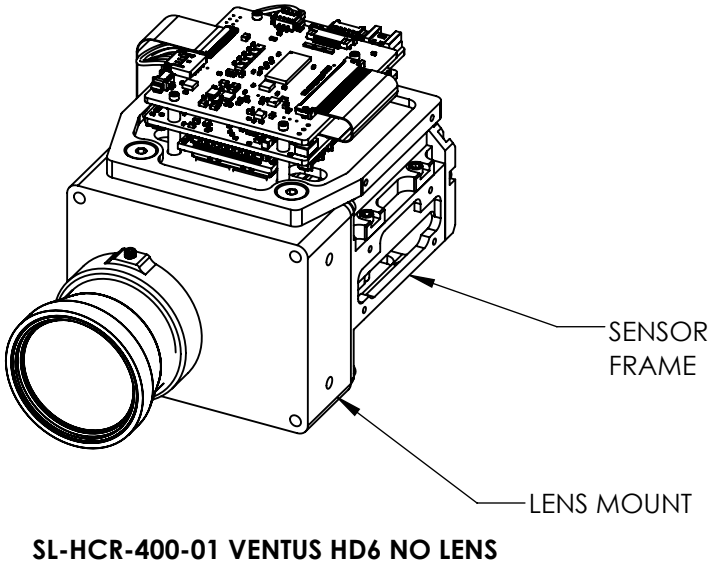




NOTES:

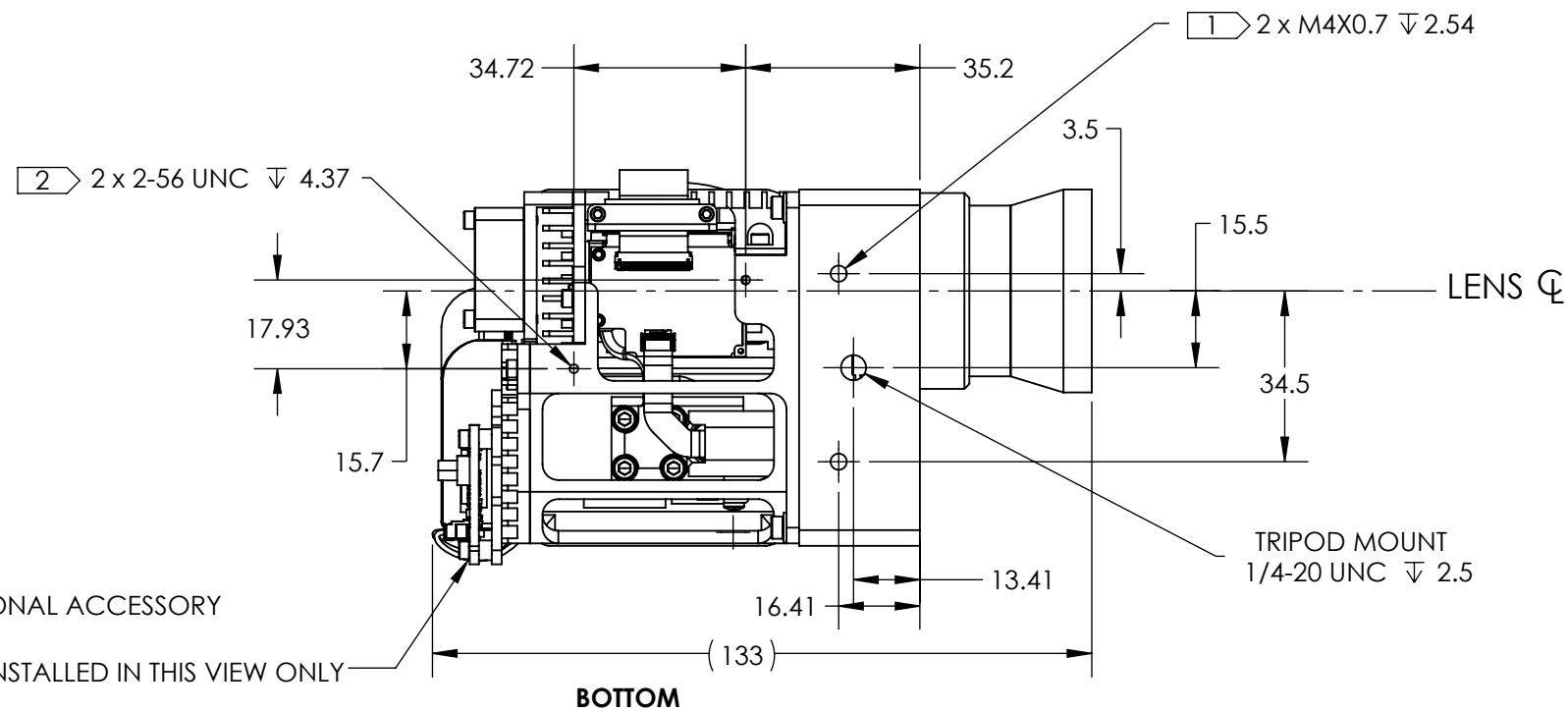
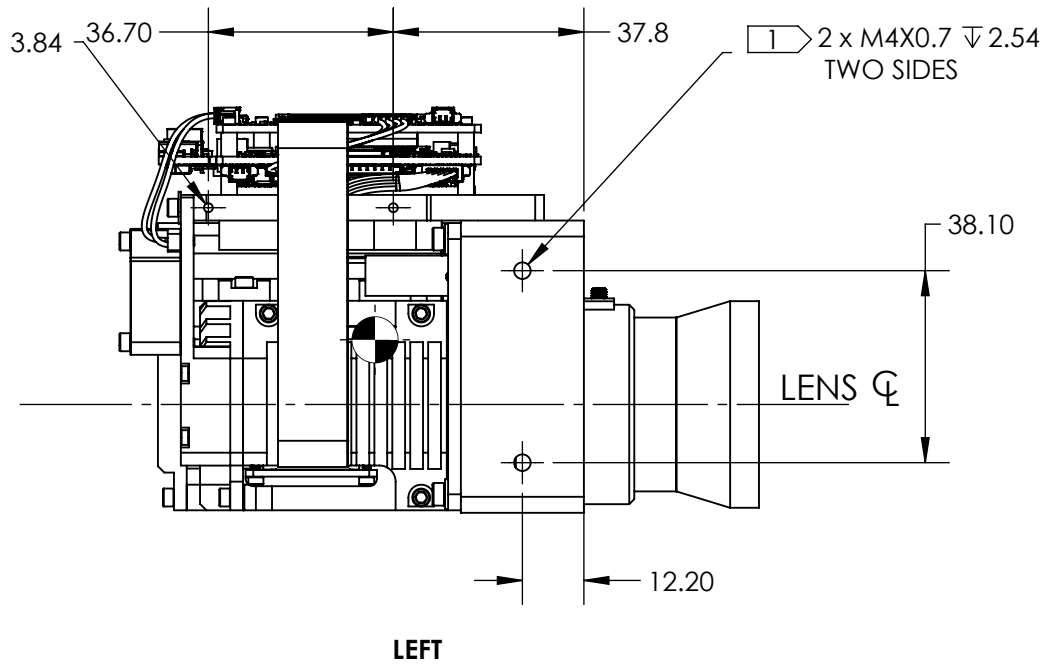
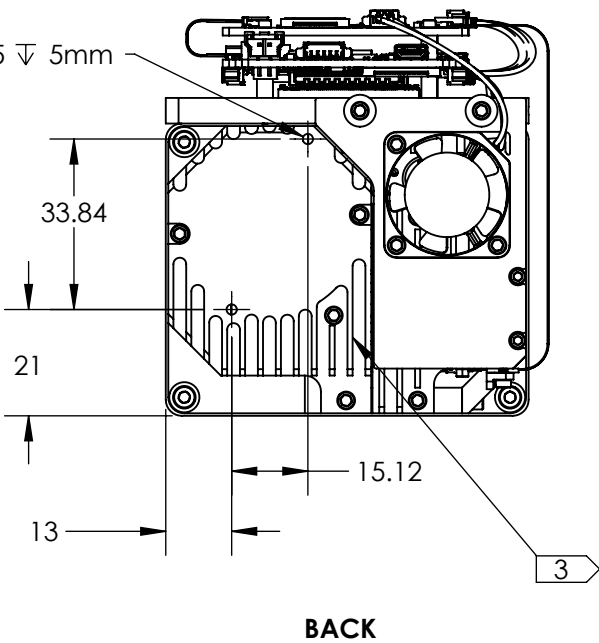
1.
- WHEN MOUNTING CAMERA USE PRIMARY HOLES ON LENS MOUNT. SECONDARY HOLES ARE AVAILABLE ON SENSOR FRAME FOR ADDITIONAL SUPPORT AND FOR MOUNTING ACCESSORIES.
2.
- DUE TO VARIATION IN ALIGNMENT AND MANUFACTURING TOLERANCES ALL SECONDARY MOUNTING HOLES HAVE VARIABLE LOCATION WITH RESPECT TO PRIMARY MOUNTING HOLES +/- 0.5mm.
3.
- OVERALL THERMAL DISSIPATION REQUIREMENT IS APPROX. 11 WATTS. PRIMARY HEATSINKING SURFACES INDICATED
4.
- OVERALL LENGTH DEPENDENT ON FOCUS POSITION, -2mm/+3mm
5.
- FOR CONNECTOR INFORMATION, REFERENCE ELECTRICAL ICD DOC NO 20-70005
6.
- APPROXIMATE VENTUS HD6 30MM MASS = 685g
7.
- RECOMMENDED VERTICAL WINDOW TILT ANGLE = 5.5°


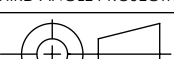


REVISIONS					
ZONE	REV.	DESCRIPTION	ECO	DATE	ENGINEER
	A	INITIAL RELEASE	1308	2023-05-23	D. KAMINSKI
	B	UPDATE TO NEW ICD TEMPLATE	1473	2023-09-27	B. BROWN
	C	ADMINISTRATIVE/FORMATTING - NO IMPACT TO FIT/FORM	1813	2025-04-09	C. JOHNSON



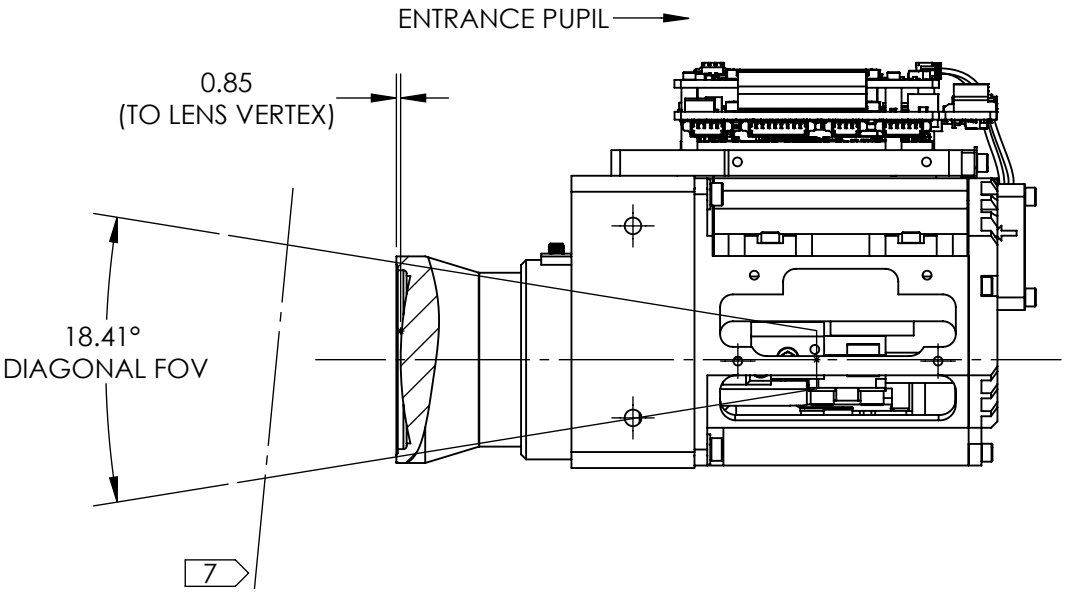
<div>Product Export Classification Control Number(ECCN): 6A003.b.4.a</div> <div>This document does not contain export-controlled technology.</div>	UNLESS OTHERWISE SPECIFIED DIM ARE IN MILLIMETERS		<div>PROPRIETARY AND CONFIDENTIAL</div> <div>THE INFORMATION CONTAINED IN THIS DRAWING IS THE SOLE PROPERTY OF SIERRA OLYMPIA TECHNOLOGIES, INC. ANY REPRODUCTION IN PART OR AS A WHOLE WITHOUT THE WRITTEN PERMISSION OF SIERRA OLYMPIA TECHNOLOGIES, INC. IS PROHIBITED.</div>		<div> SIERRA-OLYMPIA TECHNOLOGIES INC.</div>		
	X ± 2.5 mm X.X ± 0.3 mm	ANGLES X ± 1° X.X ± 0.5°				MATERIAL: N/A	
	THIRD ANGLE PROJECTION		FINISH: N/A		DESCRIPTION: Mechanical ICD, Ventus HD6 30mm		
			CAD CONTROLLED PART. THE NOMINAL PART GEOMETRY IS CONTROLLED BY THE 3D CAD PART FILE.		SIZE B	DRAWN BY: D. KAMINSKI	SHEET 1 OF 3
	DO NOT SCALE DRAWING				DRAWING NUMBER: 20-70004		Rev. C





<div>Product Export Classification Control Number(ECCN): 6A003.b.4.a</div> <div>This document does not contain export-controlled technology.</div>	UNLESS OTHERWISE SPECIFIED DIM ARE IN MILLIMETERS		PROPRIETARY AND CONFIDENTIAL THE INFORMATION CONTAINED IN THIS DRAWING IS THE SOLE PROPERTY OF SIERRA OLYMPIA TECHNOLOGIES, INC. ANY REPRODUCTION IN PART OR AS A WHOLE WITHOUT THE WRITTEN PERMISSION OF SIERRA OLYMPIA TECHNOLOGIES, INC. IS PROHIBITED.		<div></div> <div>SIERRA-OLYMPIA TECHNOLOGIES INC.</div>	
	X ± 2.5 mm X.X ± 0.3 mm X.XX ± 0.13 mm	ANGLES X ± 1° X.X ± 0.5°	MATERIAL: N/A	DESCRIPTION: Mechanical ICD, Ventus HD6 30mm		
	THIRD ANGLE PROJECTION		FINISH: N/A	SIZE B	DRAWN BY: D. KAMINSKI	SHEET 2 OF 3
				DRAWING NUMBER: 20-70004		
	DO NOT SCALE DRAWING		CAD CONTROLLED PART. THE NOMINAL PART GEOMETRY IS CONTROLLED BY THE 3D CAD PART FILE.		Rev. C	

ENTRANCE PUPIL LOCATION = 82.55mm BEHIND LENS VERTEX
ENTRANCE PUPUL DIAMETER = 11.53mm

HFOV	14.6
VFOV	11.0
DFOV	18.4



<div>Product Export Classification Control Number(ECCN): 6A003.b.4.a</div> <div>This document does not contain export-controlled technology.</div>	UNLESS OTHERWISE SPECIFIED DIM ARE IN MILLIMETERS		PROPRIETARY AND CONFIDENTIAL THE INFORMATION CONTAINED IN THIS DRAWING IS THE SOLE PROPERTY OF SIERRA OLYMPIA TECHNOLOGIES, INC. ANY REPRODUCTION IN PART OR AS A WHOLE WITHOUT THE WRITTEN PERMISSION OF SIERRA OLYMPIA TECHNOLOGIES, INC. IS PROHIBITED.		<div> SIERRA-OLYMPIA TECHNOLOGIES INC.</div>	
	X ± 2.5 mm X.X ± 0.3 mm X.XX ± 0.13 mm	ANGLES X ± 1 ° X.X ± 0.5 °				
	THIRD ANGLE PROJECTION		MATERIAL: N/A	DESCRIPTION: Mechanical ICD, Ventus HD6 30mm		
			FINISH: N/A	SIZE B	DRAWN BY: D. KAMINSKI	SHEET 3 OF 3
	DO NOT SCALE DRAWING		CAD CONTROLLED PART. THE NOMINAL PART GEOMETRY IS CONTROLLED BY THE 3D CAD PART FILE.	DRAWING NUMBER: 20-70004		Rev. C