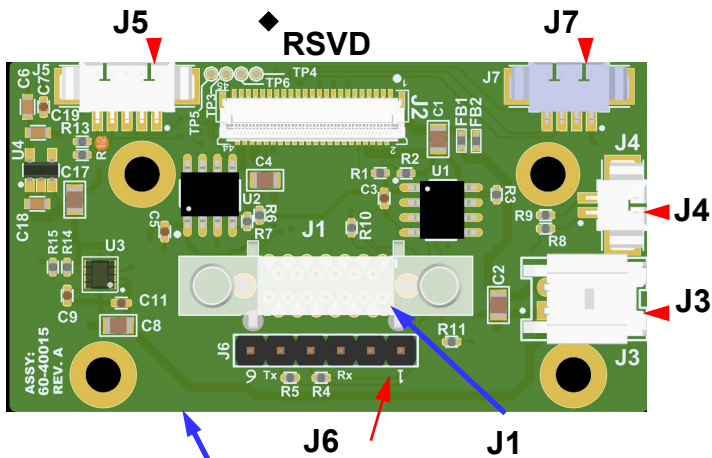


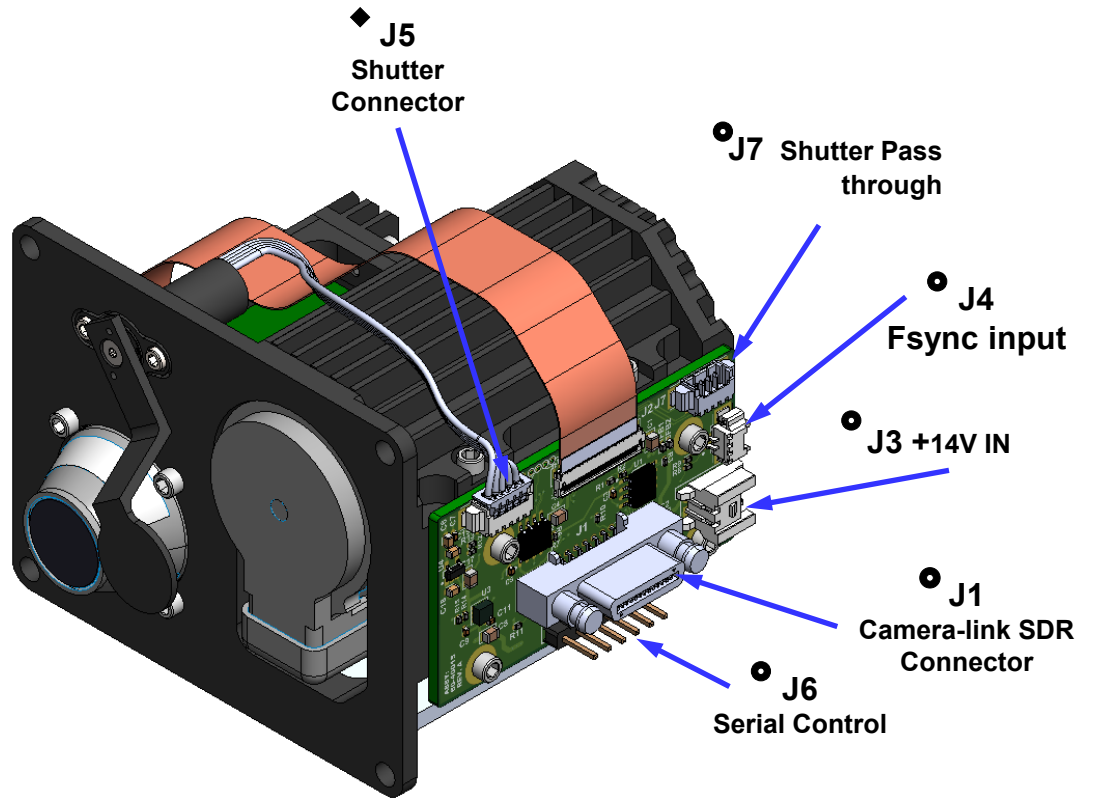
NOTES: UNLESS OTHERWISE SPECIFIED

- LEGEND:
 - ◆ OCCUPIED – used by factory configuration
 - ★ RESERVED – Factory use only; Do Not Connect
 - OEM/USER connection to camera interface
 - ▶ Pin 1 indicator
- Mating connectors, pinouts, and signal names on Sheets 2-3

REVISIONS			
REV	DESCRIPTION	ECO	Date
A	Initial Release	1308	2023-01-26



**60-40015
PCBA, HexaCore
Adapter Board**



Product Export Classification Control Number(ECCN): 6A003.b.4.a This document is provided for integration purposes only and does not contain export-controlled technology	DIMENSIONS ARE IN MILLIMETERS TOLERANCES: ±.127mm except where noted ±.5 deg DO NOT SCALE DRAWING	Drawn: D.Kaminski	
	FINISH: MATERIAL:	COMMENTS:	
Size: A	Drawing Date: 2023-01-26	Document Rev: A	N T S
			SHEET 1 OF 3

NOTES: UNLESS OTHERWISE SPECIFIED

J1 Camera Link Out

Output Connector: 3M 12226-1150-00FR
 Mating cable, 26 position SDR Male
 Raw image data from sensor core
 16 bit raw (before non-uniformity correction)
 Frame rate: 30Hz or 60Hz, will match sensor output

Pin	Signal	Pin	Signal
1	GND/POCL	14	GND
2	CL_OUT0_N	15	CL_OUT0_P
3	CL_OUT1_N	16	CL_OUT1_P
4	CL_OUT2_N	17	CL_OUT2_P
5	CL_CLK_N	18	CL_CLK_P
6	CL_OUT3_N	19	CL_OUT3_P
7	n/c	20	n/c
8	n/c	21	n/c
9	n/c	22	n/c
10	n/c	23	n/c
11	n/c	24	n/c
12	n/c	25	n/c
13	GND	26	GND/POCL

J3 System Power In

Molex "Sherlock" 2-pin, 2mm pitch connector
 Mating connector housing: Molex 0355070200
 Connector terminals: Molex 0502128100
 Input Voltage: 11.0 - 16.0 V, 14V recommended, at higher operating temperatures lower voltages may reduce performance.
 Input Power (steady state, after cooldown): 5.6W typ
 Input Power (during cooldown): 10.1W typ
SOTI mating pigtail cable assy: S-A07-10237 (18", 24 awg)

Pin	Description	
1	Input Power Return	BLACK
2	+14 V Input Power	RED

J4s Frame Sync (input)


Molex "Picoblade" 2-pin, 1.25mm pitch
 Mating connector housing: Molex 0510210200
 Connector terminals: Molex 0500588100 (28-32 AWG)
 See HexaBlu Electrical ICD (DRS Document No. 1043862) for detail

Pin	Signal	Notes
1	FSync	3.3V logic level 10kΩ pull-down
2	GND	

J6 Serial (RS 422)

"RX" indicates input to camera from external device
 "TX" indicates output from camera to external device
 For direct communication with camera sensor
 Standard .1" header, mates with FTDI TTL-232R3V3
 Default baud rate 115200/8/N/1

Pin	RS-422
1	GND
2	n/c
3	n/c
4	TX
5	RX
6	n/c

Product Export Classification Control Number(ECCN): 6A003.b.4.a This document is provided for integration purposes only and does not contain export-controlled technology	DIMENSIONS ARE IN MILLIMETERS TOLERANCES: ±.127mm except where noted ±.5 deg DO NOT SCALE DRAWING	Drawn: D.Kaminski	
	FINISH: MATERIAL:	COMMENTS:	
Size: A		Drawing Date: 2023-01-26	Document Rev: A
N T S		SHEET 2 OF 3	

NOTES: UNLESS OTHERWISE SPECIFIED

J7 Shutter Control

Molex "PicoBlade" 4-pin, 1.25mm pitch


Mating connector housing: Molex 0510210400

Connector terminals: Molex 0500588100 (28-32 AWG)

3.3V Signals, 4.99k pull ups installed on SDA and SCL lines

See Nanomotion Usver Manual RS08 Rotary Shutter for shutter commands

Pin	RS-422 (default)
1	GND
2	Shutter Rst
3	SDA
4	SCL

Product Export Classification Control Number(ECCN): 6A003.b.4.a This document is provided for integration purposes only and does not contain export-controlled technology	DIMENSIONS ARE IN MILLIMETERS TOLERANCES: ±.127mm except where noted ±.5 deg DO NOT SCALE DRAWING	Drawn: D.Kaminski	 SIERRA-OLYMPIA TECHNOLOGIES INC.
	FINISH: MATERIAL:	COMMENTS:	
Size: A	Drawing Date: 2023-01-26	Document Rev: A	N T S
			SHEET 3 OF 3