

4

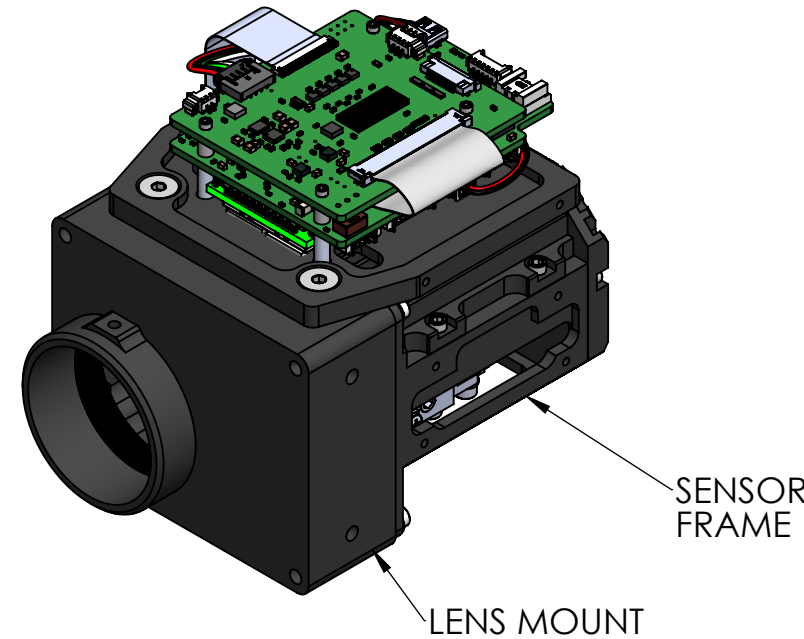
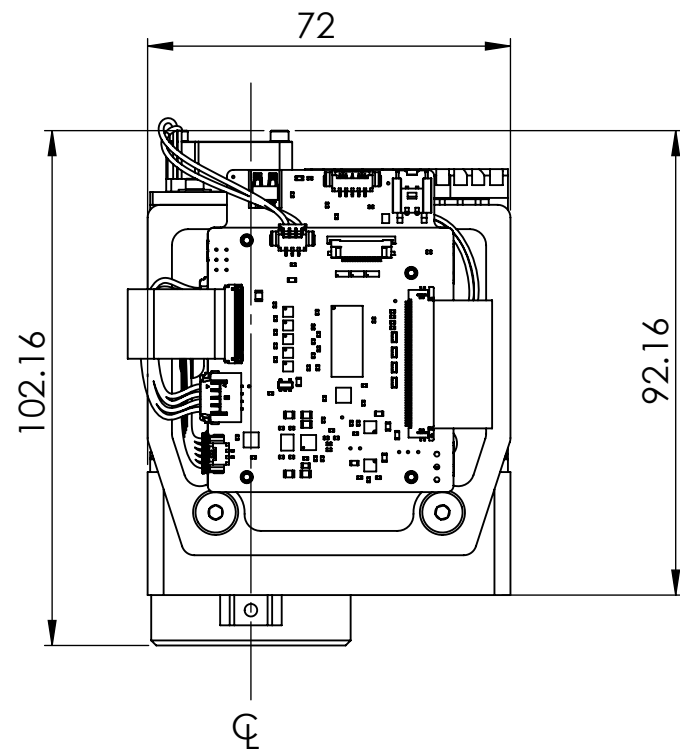
3

2

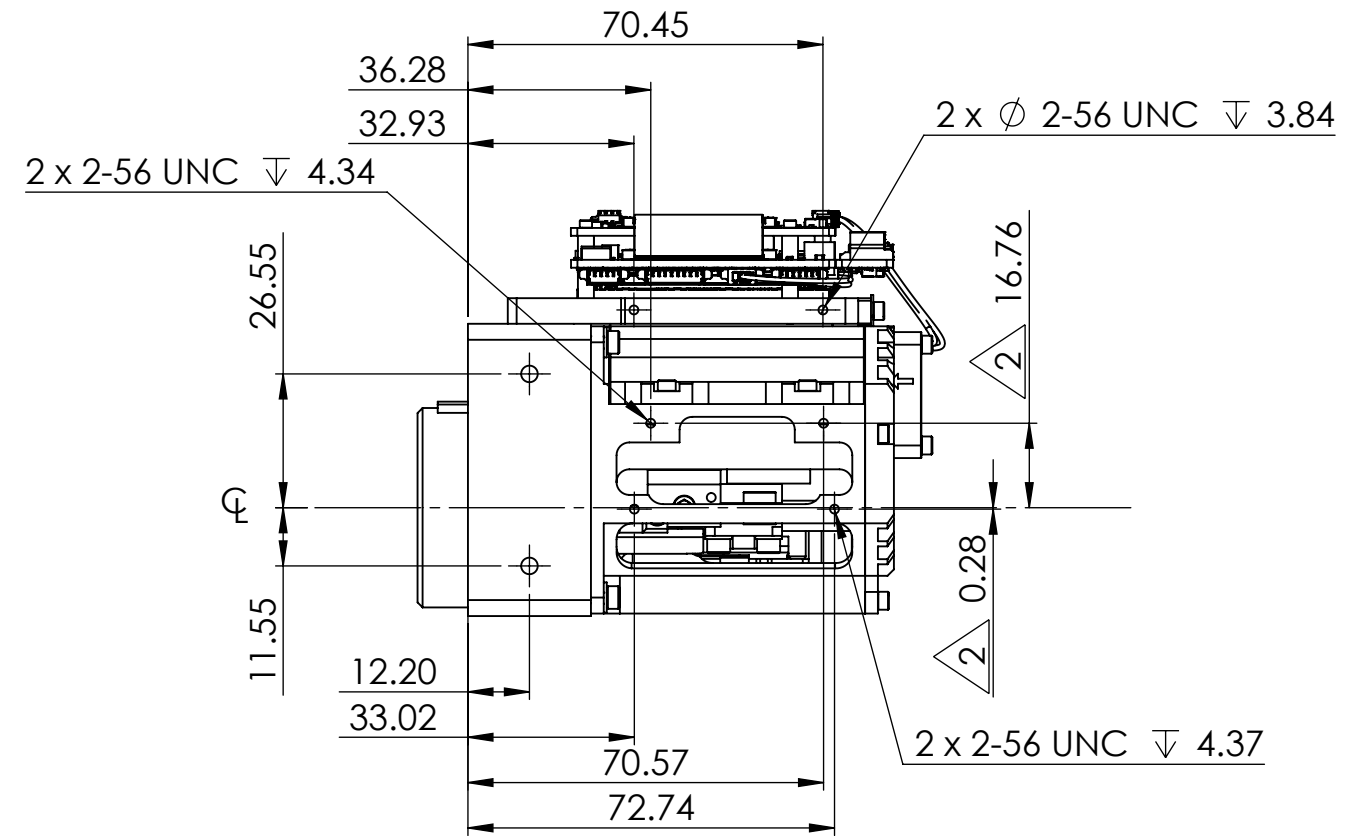
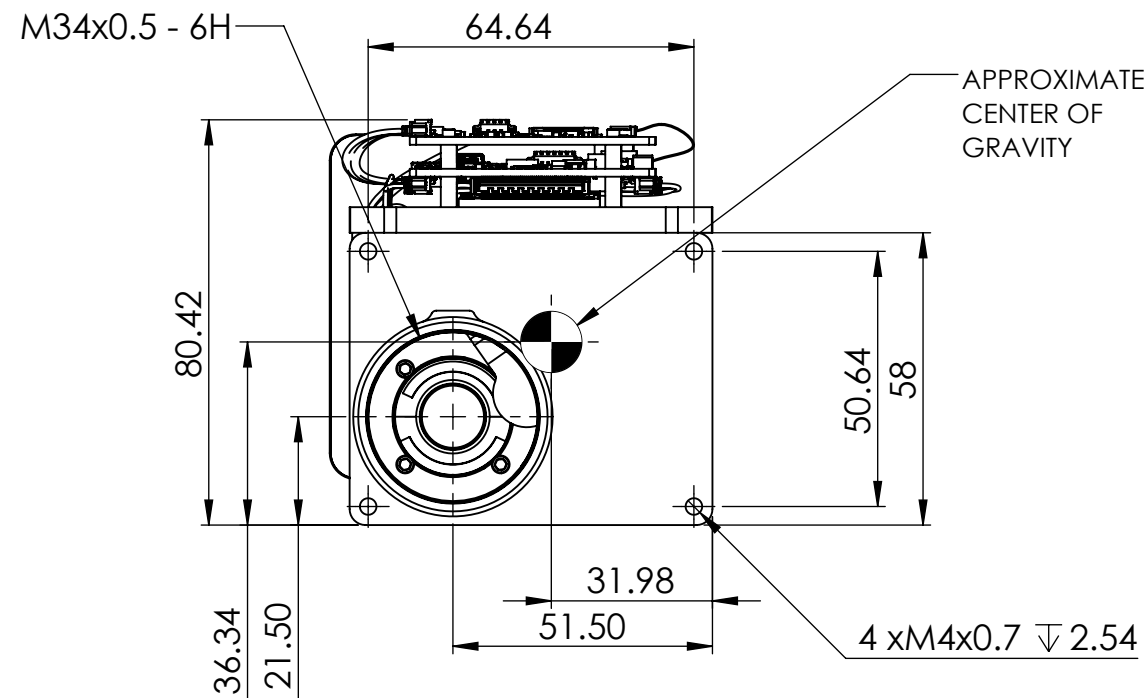
1

NOTES:

- 1. WHEN MOUNTING CAMERA USE PRIMARY HOLES ON LENS MOUNT. SECONDARY HOLES ARE AVAILABLE ON SENSOR FRAME FOR ADDITIONAL SUPPORT AND FOR MOUNTING ACCESSORIES.
- 2. THE SENSOR FRAME HAS OVERSIZED HOLES TO ALLOW FOR OPTICAL ALIGNMENT OF THE LENS MOUNT +/- 0.5mm. MAKE NOTE THAT ALL SECONDARY MOUNTING HOLES HAVE VARIABLE LOCATION WITH RESPECT TO PRIMARY MOUNTING HOLES.
- 3. OVERALL THERMAL DISSIPATION REQUIREMENT IS APPROX. 11 WATTS. PRIMARY HEATSINKING SURFACES INDICATED
- 4. FOR CONNECTOR INFORMATION, REFERENCE ELECTRICAL ICD DOC NO 20-70005
- 5. APPROXIMATE VENTUS HD6 NO LENS MASS = 595g



SL-HCR-400-01 Ventus HD6 No Lens



REVISIONS					
ZONE	REV.	DESCRIPTION	ECO	DATE	ENGINEER
	A	INITIAL RELEASE	1308	2023-05-23	D.KAMINSKI

Product Export Classification Control Number(ECCN): 6A003.b.4.a This document is provided for integration purposes only and does not contain export-controlled technology	PROPRIETARY AND CONFIDENTIAL THE INFORMATION CONTAINED IN THIS DRAWING IS THE SOLE PROPERTY OF SIERRA OLYMPIA TECHNOLOGIES, INC. ANY REPRODUCTION IN PART OR AS A WHOLE WITHOUT THE WRITTEN PERMISSION OF SIERRA OLYMPIA TECHNOLOGIES, INC. IS PROHIBITED.	DIMENSIONS ARE IN MILLIMETERS TOLERANCES: +/- 0.254mm (0,01in) +/- 1deg EXCEPT WHERE NOTED.	CAD CONTROLLED PART. THE NOMINAL PART GEOMETRY IS CONTROLLED BY THE 3D CAD PART FILE. DO NOT SCALE DRAWING	Sierra-Olympia Tech., Inc.	
				DESCRIPTION: Mechanical ICD, Ventus HD6 No Lens	
			SIZE B	DRAWN BY: D.KAMINSKI	SHEET 1 OF 2
			DRAWING NUMBER: 20-70007		Rev. A

4

3

2

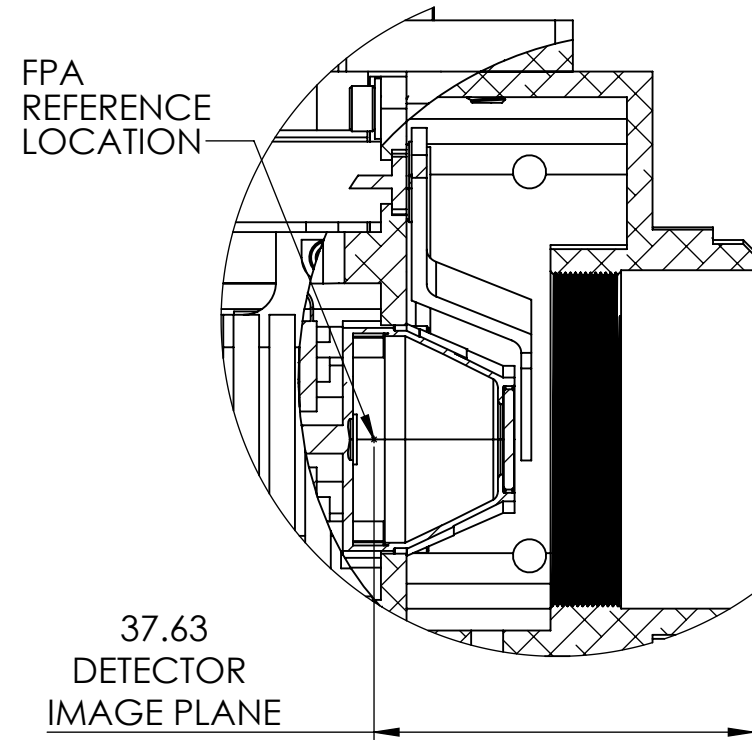
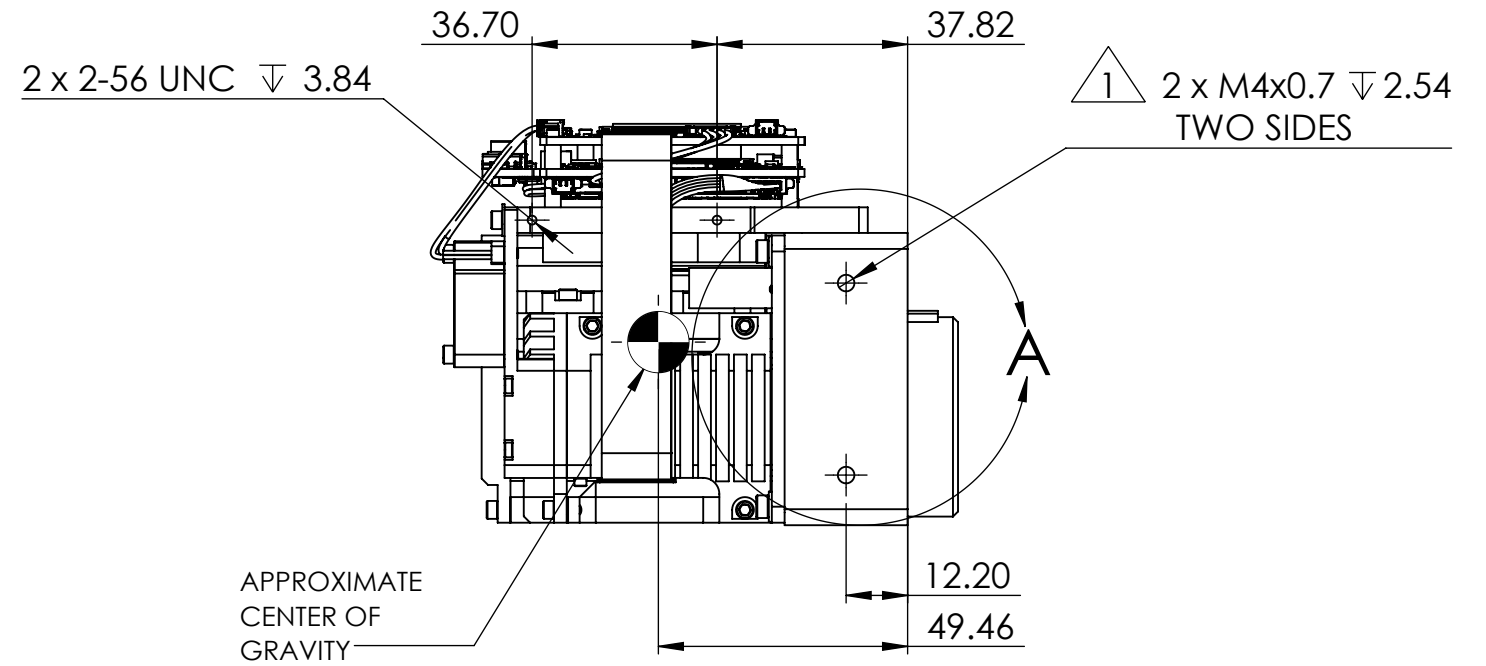
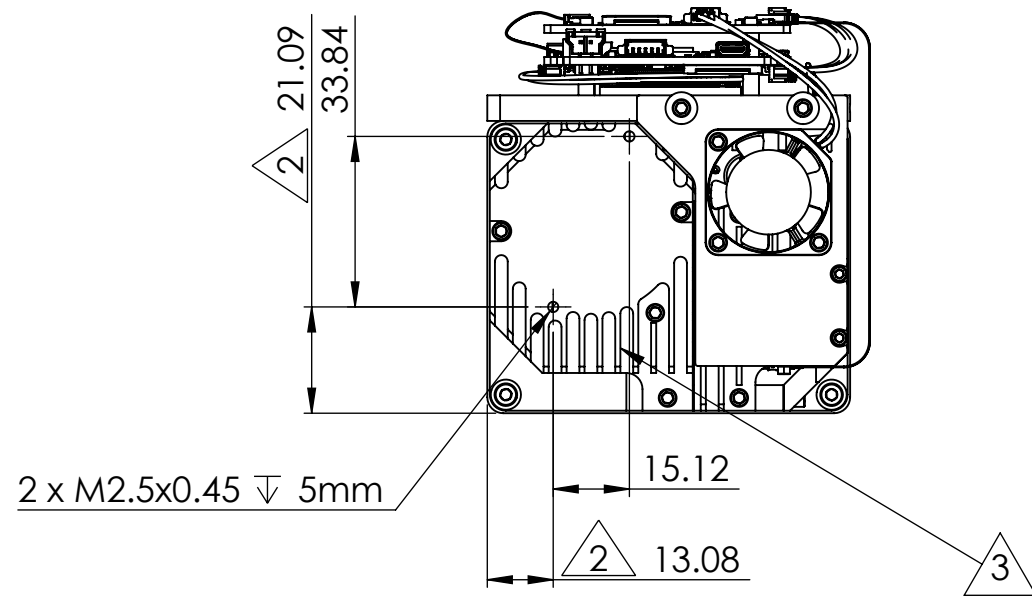
1

4

3

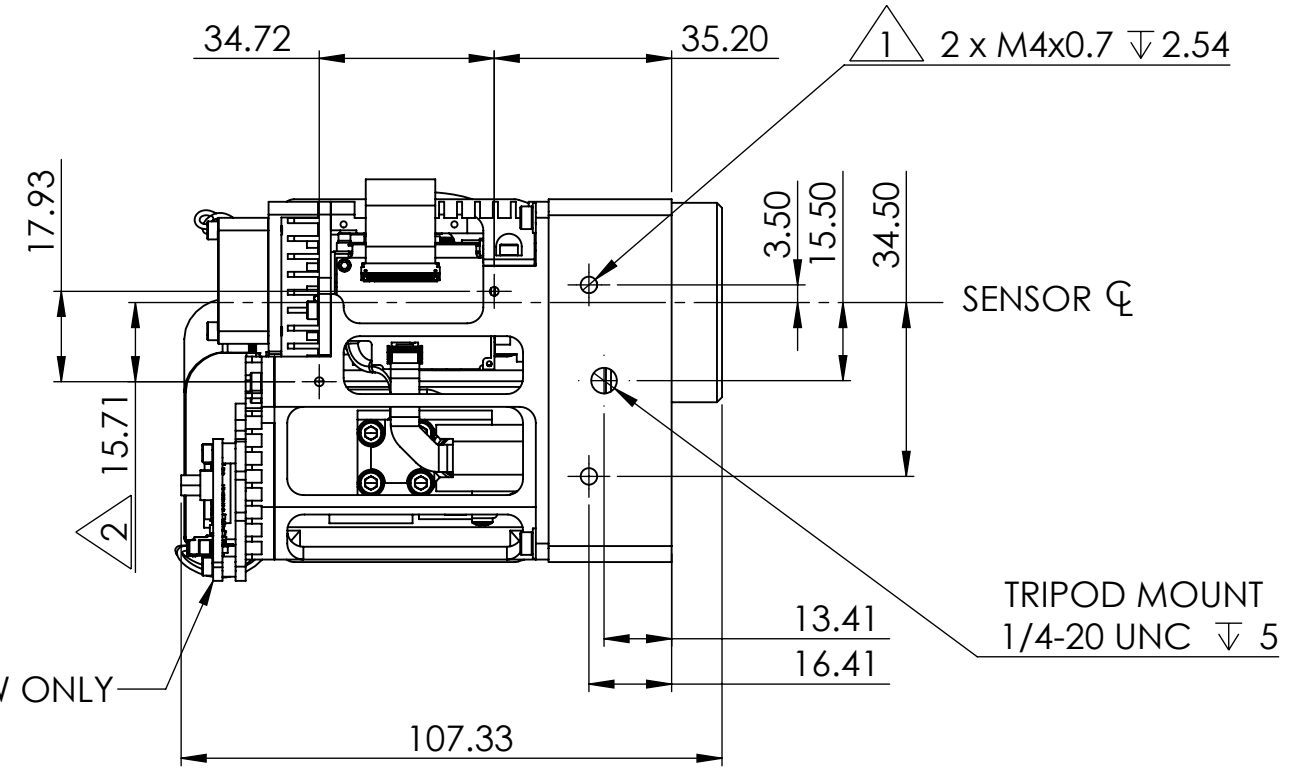
2

1



DETAIL A
SCALE 2 : 1.5

HD-SDI OPTIONAL ACCESSORY
PN: 60-40058
SHOWN AS INSTALLED IN THIS VIEW ONLY



Product Export Classification Control Number(ECCN): 6A003.b.4.a This document is provided for integration purposes only and does not contain export-controlled technology	PROPRIETARY AND CONFIDENTIAL THE INFORMATION CONTAINED IN THIS DRAWING IS THE SOLE PROPERTY OF SIERRA OLYMPIA TECHNOLOGIES, INC. ANY REPRODUCTION IN PART OR AS A WHOLE WITHOUT THE WRITTEN PERMISSION OF SIERRA OLYMPIA TECHNOLOGIES, INC. IS PROHIBITED.	DIMENSIONS ARE IN MILLIMETERS TOLERANCES: +/- 0.254mm (0.01in) +/- 1deg EXCEPT WHERE NOTED.	CAD CONTROLLED PART. THE NOMINAL PART GEOMETRY IS CONTROLLED BY THE 3D CAD PART FILE. DO NOT SCALE DRAWING	Sierra-Olympia Tech., Inc.	
				DESCRIPTION: Mechanical ICD, Ventus HD6 No Lens	
COMMENTS:		SIZE B	DRAWN BY: D.KAMINSKI	SHEET 2 OF 2	
		DRAWING NUMBER: 20-70007		Rev. A	

4

3

2

1