

4

3

2

1

NOTES:

1. WHEN MOUNTING CAMERA USE PRIMARY HOLES ON LENS MOUNT. SECONDARY HOLES ARE AVAILABLE ON SENSOR FRAME FOR ADDITIONAL SUPPORT AND FOR MOUNTING ACCESSORIES.
2. THE SENSOR FRAME HAS OVERSIZED HOLES TO ALLOW FOR OPTICAL ALIGNMENT OF THE LENS MOUNT +/- 0.5mm. MAKE NOTE THAT ALL SECONDARY MOUNTING HOLES HAVE VARIABLE LOCATION WITH RESPECT TO PRIMARY MOUNTING HOLES.
3. OVERALL THERMAL DISSIPATION REQUIREMENT IS APPROX. 11 WATTS. PRIMARY HEATSINKING SURFACES INDICATED
4. FOR CONNECTOR INFORMATION, REFERENCE ELECTRICAL ICD DOC NO 20-70005
5. APPROXIMATE VENTUS HD6 NO LENS MASS = 595g

TOP

REVISIONS					
ZONE	REV.	DESCRIPTION	ECO	DATE	ENGINEER
	A	INITIAL RELEASE	1308	2023-05-23	D.KAMINSKI
	B	UPDATE FORMAT	1473	2023-10-02	B.BROWN

SL-HCR-400-01 Ventus HD6 No Lens

FRONT

LEFT

Product Export Classification Control Number(ECCN): 6A003.b.4.a This document is provided for integration purposes only and does not contain export-controlled technology	PROPRIETARY AND CONFIDENTIAL THE INFORMATION CONTAINED IN THIS DRAWING IS THE SOLE PROPERTY OF SIERRA OLYMPIA TECHNOLOGIES, INC. ANY REPRODUCTION IN PART OR AS A WHOLE WITHOUT THE WRITTEN PERMISSION OF SIERRA OLYMPIA TECHNOLOGIES, INC. IS PROHIBITED.	DIMENSIONS ARE IN MILLIMETERS TOLERANCES: +/- 0.254mm (0.01in) +/- 1deg EXCEPT WHERE NOTED.	CAD CONTROLLED PART, THE NOMINAL PART GEOMETRY IS CONTROLLED BY THE 3D CAD PART FILE. DO NOT SCALE DRAWING		SIERRA-OLYMPIA TECHNOLOGIES INC.
			DESCRIPTION: Mechanical ICD, Ventus HD6 No Lens		
			DRAWING NUMBER: 20-70007		Rev. B

4

3

2

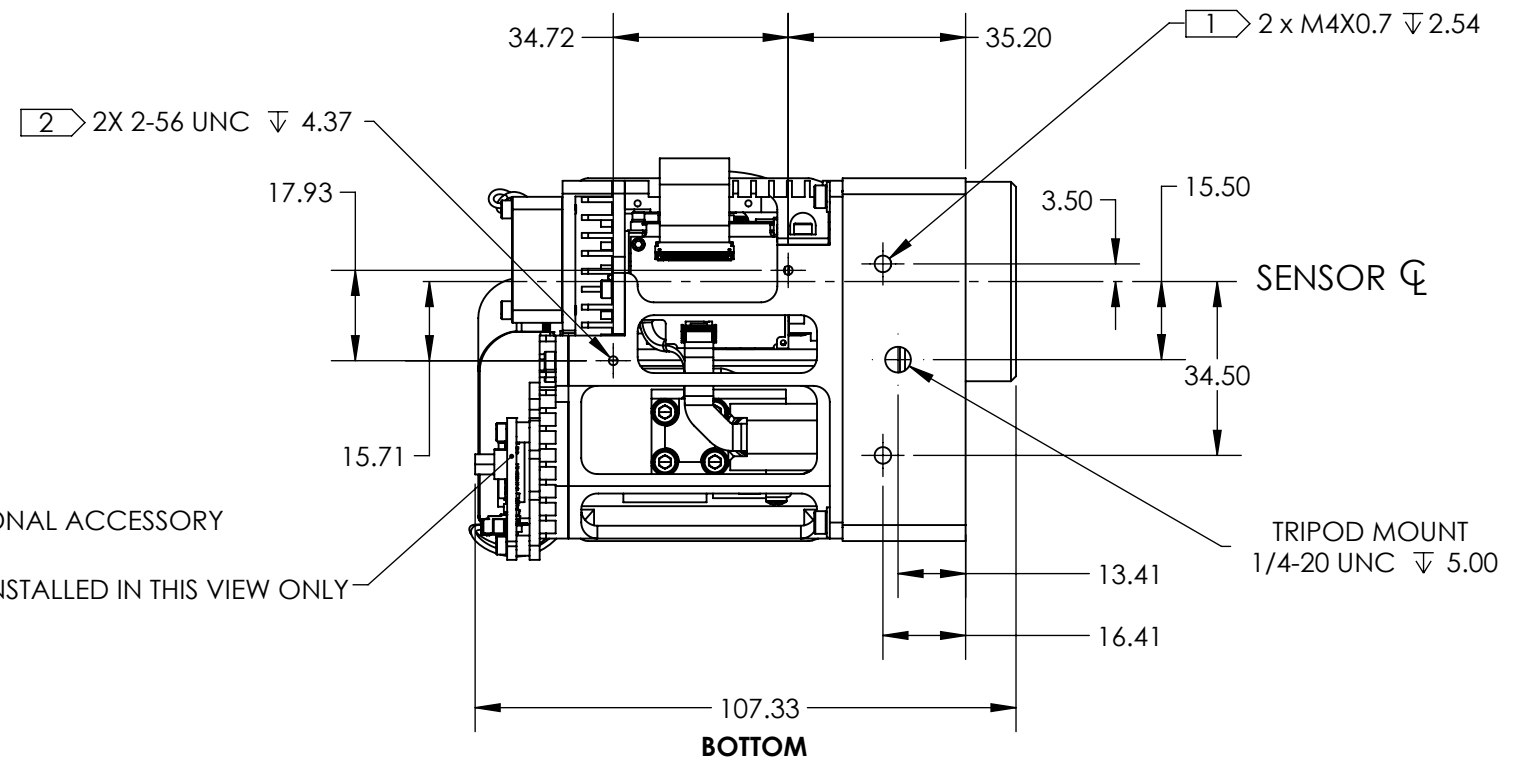
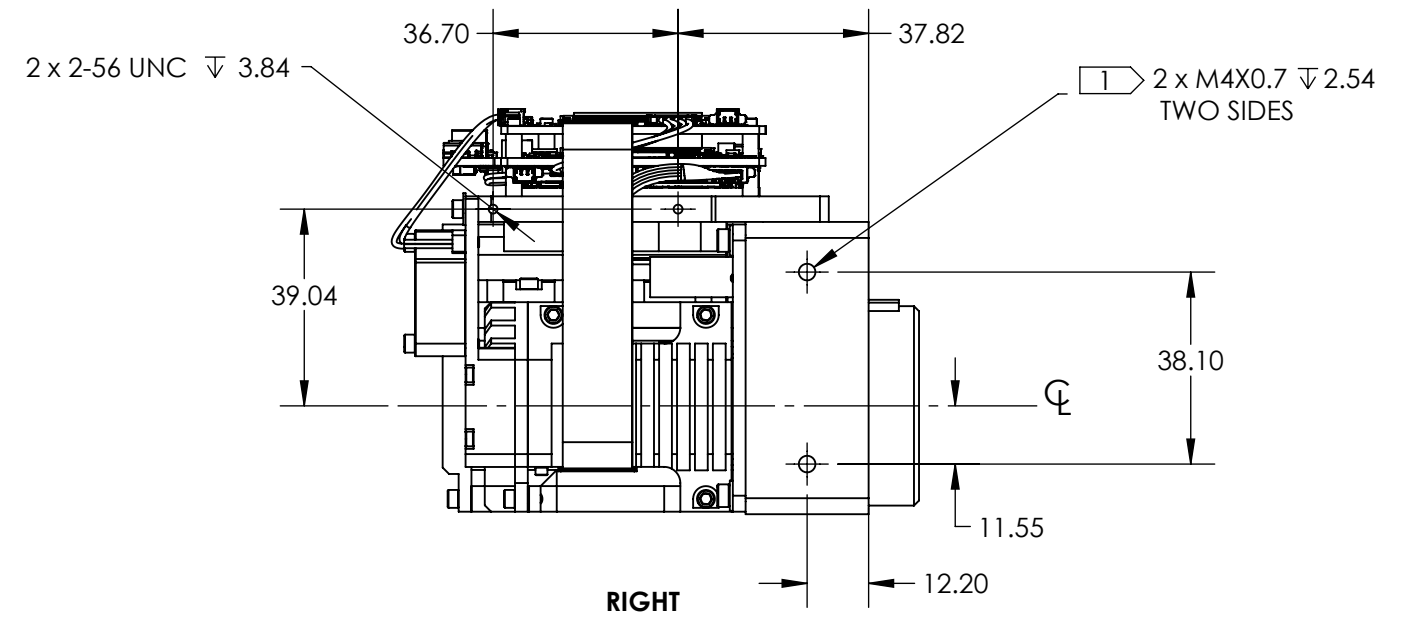
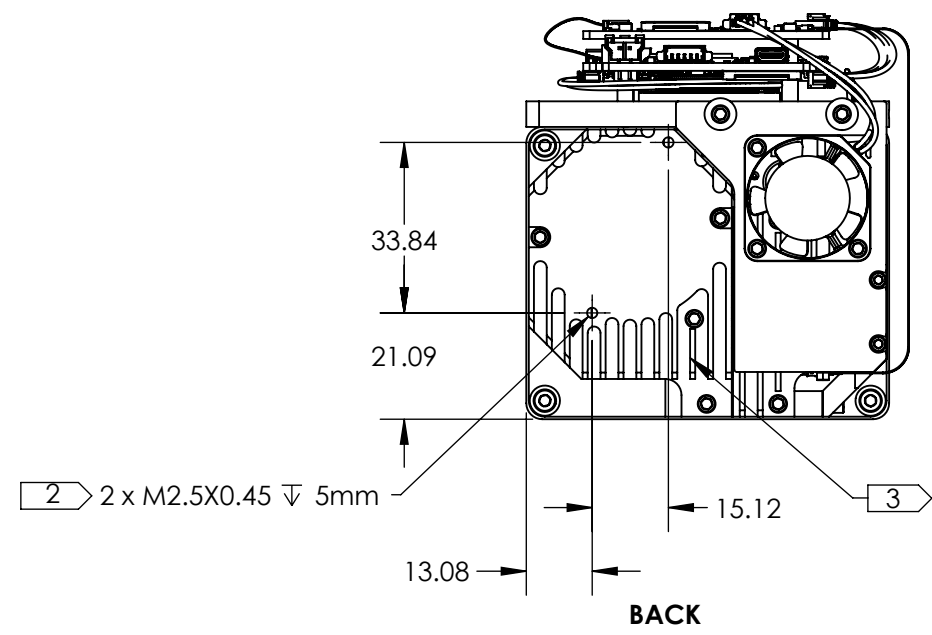
1

4

3

2

1



HD-SDI OPTIONAL ACCESSORY
PN: 60-40058
SHOWN AS INSTALLED IN THIS VIEW ONLY

Product Export Classification Control Number(ECCN): 6A003.b.4.a This document is provided for integration purposes only and does not contain export-controlled technology	PROPRIETARY AND CONFIDENTIAL THE INFORMATION CONTAINED IN THIS DRAWING IS THE SOLE PROPERTY OF SIERRA OLYMPIA TECHNOLOGIES, INC. ANY REPRODUCTION IN PART OR AS A WHOLE WITHOUT THE WRITTEN PERMISSION OF SIERRA OLYMPIA TECHNOLOGIES, INC. IS PROHIBITED. COMMENTS:	DIMENSIONS ARE IN MILLIMETERS TOLERANCES: +/- 0.254mm (0.01in) +/- 1deg EXCEPT WHERE NOTED. MATERIAL: N/A FINISH: N/A	CAD CONTROLLED PART, THE NOMINAL PART GEOMETRY IS CONTROLLED BY THE 3D CAD PART FILE. DO NOT SCALE DRAWING		
			DESCRIPTION: Mechanical ICD, Ventus HD6 No Lens		
			DRAWING NUMBER: 20-70037		Rev. B

4

3

2

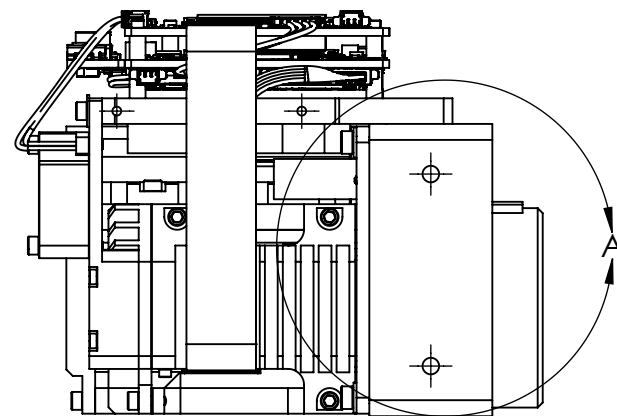
1

4

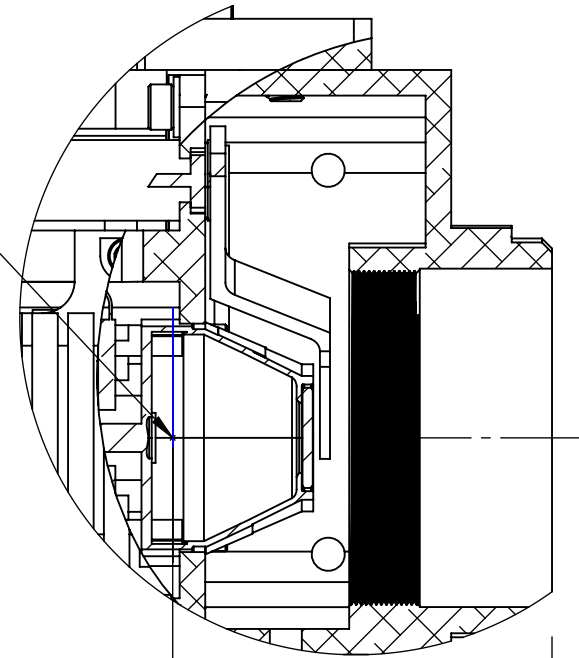
3

2

1



FPA REFERENCE
LOCATION



37.63
DETECTOR
IMAGE PLANE

DETAIL A
SCALE 2 : 1.5

Product Export Classification Control Number(ECCN): 6A003.b.4.a This document is provided for integration purposes only and does not contain export-controlled technology	PROPRIETARY AND CONFIDENTIAL THE INFORMATION CONTAINED IN THIS DRAWING IS THE SOLE PROPERTY OF SIERRA OLYMPIA TECHNOLOGIES, INC. ANY REPRODUCTION IN PART OR AS A WHOLE WITHOUT THE WRITTEN PERMISSION OF SIERRA OLYMPIA TECHNOLOGIES, INC. IS PROHIBITED.	DIMENSIONS ARE IN MILLIMETERS TOLERANCES: +/- 0.254mm (0,01in) +/- 1deg EXCEPT WHERE NOTED.	CAD CONTROLLED PART, THE NOMINAL PART GEOMETRY IS CONTROLLED BY THE 3D CAD PART FILE. DO NOT SCALE DRAWING			
			DESCRIPTION: Mechanical ICD, Ventus HD6 No Lens			
COMMENTS:		MATERIAL: N/A	FINISH: N/A	SIZE B	DRAWN BY: D.KAMINSKI	SHEET 3 OF 3
		DRAWING NUMBER: 20-70007		Rev. B		

4

3

2

1

C

B

A

C

B

A