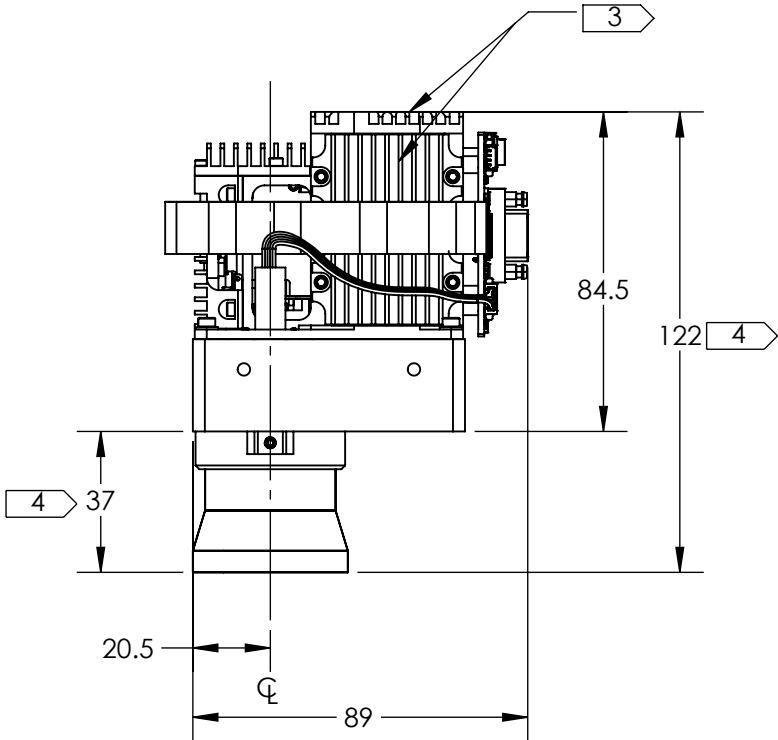
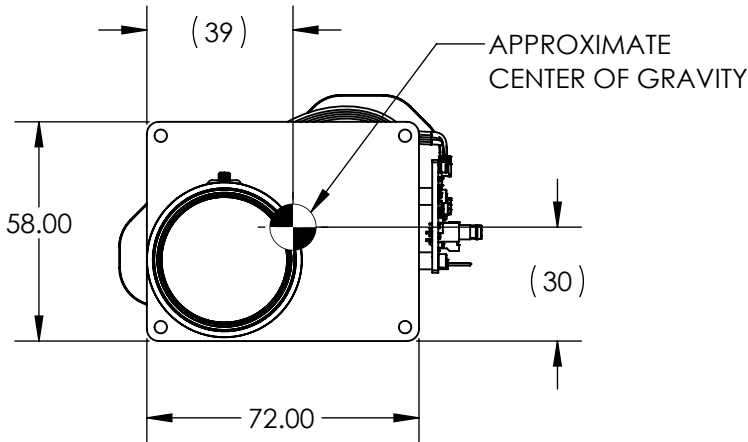


NOTES:

1. WHEN MOUNTING CAMERA USE PRIMARY HOLES ON LENS MOUNT. SECONDARY HOLES ARE AVAILABLE ON SENSOR FRAME FOR ADDITIONAL SUPPORT AND FOR MOUNTING ACCESSORIES.
2. DUE TO VARIATION IN ALIGNMENT AND MANUFACTURING TOLERANCES ALL SECONDARY MOUNTING HOLES HAVE VARIABLE LOCATION WITH RESPECT TO PRIMARY MOUNTING HOLES +/- 0.5mm.
3. OVERALL THERMAL DISSIPATION REQUIREMENT IS APPROX. 7 WATTS. PRIMARY HEATSINKING SURFACES INDICATED
4. OVERALL LENGTH DEPENDENT ON FOCUS POSITION, - 2mm/+3mm
5. FOR CONNECTOR INFORMATION, REFERENCE ELECTRICAL ICD DOC NO 20-70006
6. APPROXIMATE MASS = 620g
7. Recommended window vertical tilt angle = 5.5°

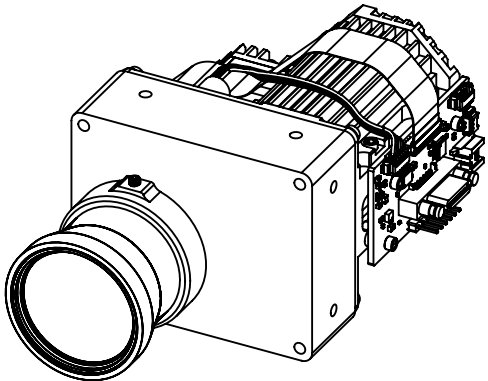


TOP

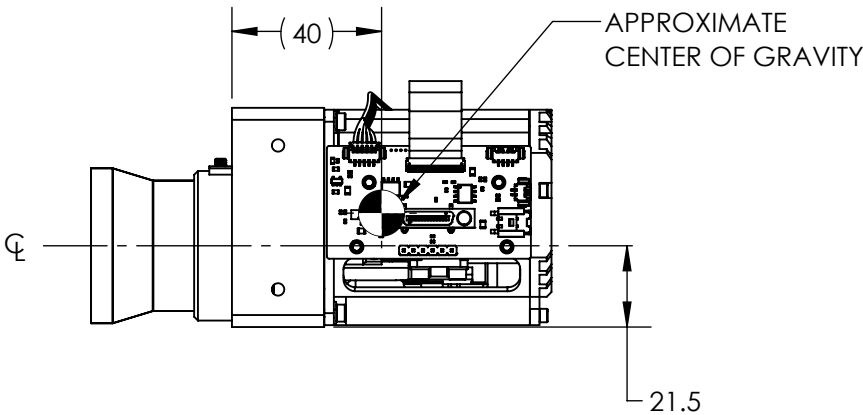


FRONT



REVISIONS					
ZONE	REV.	DESCRIPTION	ECO	DATE	ENGINEER
	A	INITIAL RELEASE	1308	2023-04-10	D. KAMINSKI
	B	REVISE DRAWING FORMAT	1473	2023-09-25	B. BROWN
	C	ADMINISTRATIVE/FORMATTING - NO IMPACT TO FIT/Form	1813	2025-04-09	C. JOHNSON

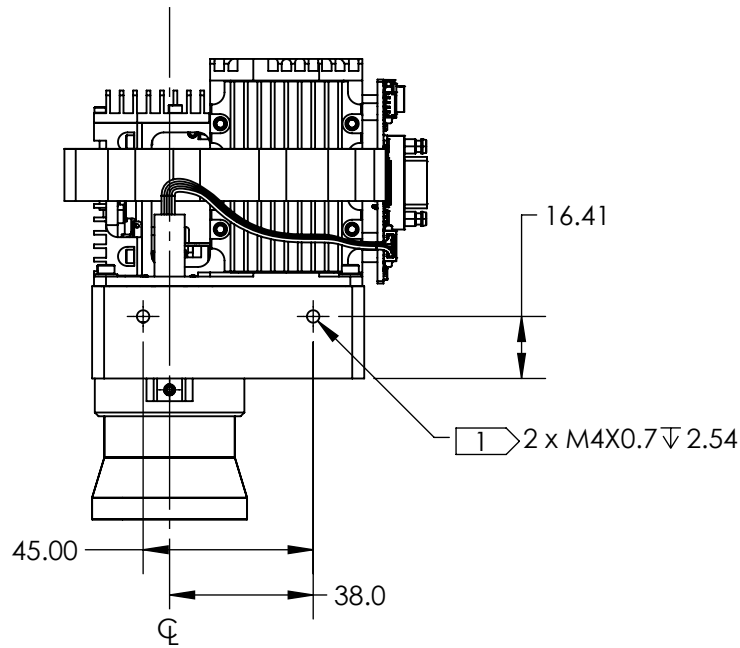


SL-HCR-310-01
VENTUS HD6 CORE 30MM

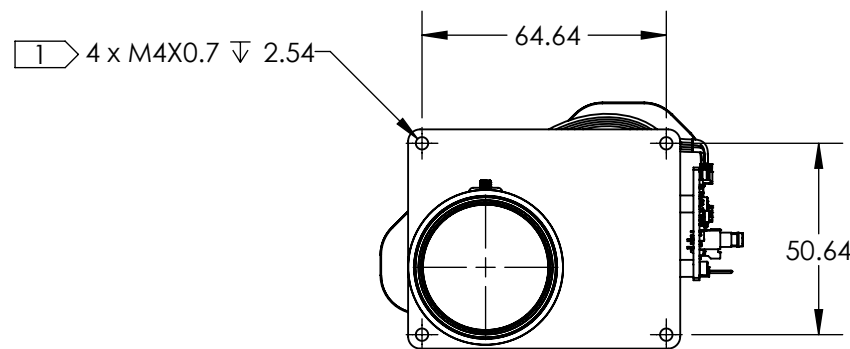


RIGHT

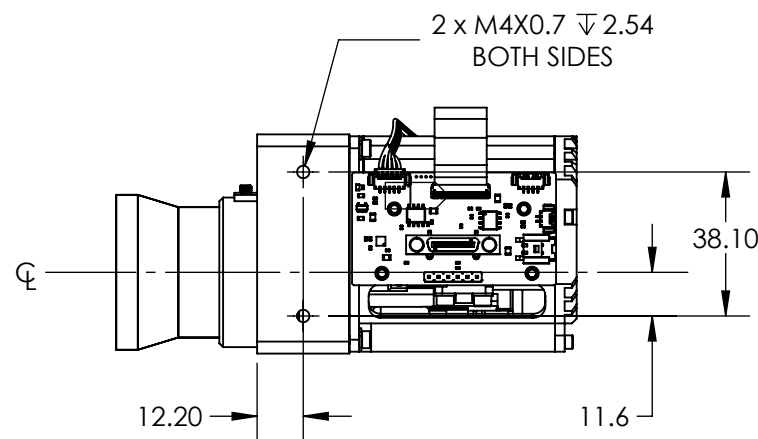
<div>Product Export Classification Control Number(ECCN): 6A003.b.4.a</div> <div>This document does not contain export-controlled technology.</div>	UNLESS OTHERWISE SPECIFIED DIM ARE IN MILLIMETERS		PROPRIETARY AND CONFIDENTIAL THE INFORMATION CONTAINED IN THIS DRAWING IS THE SOLE PROPERTY OF SIERRA OLYMPIA TECHNOLOGIES, INC. ANY REPRODUCTION IN PART OR AS A WHOLE WITHOUT THE WRITTEN PERMISSION OF SIERRA OLYMPIA TECHNOLOGIES, INC. IS PROHIBITED.		<div> SIERRA-OLYMPIA TECHNOLOGIES INC.</div>
	X ± 2.5 mm X.X ± 0.3 mm	ANGLES X ± 1° X.X ± 0.5°			
	THIRD ANGLE PROJECTION		FINISH: N/A		DESCRIPTION: Mechanical ICD, Ventus HD6 Core 30mm
					SIZE B
	DO NOT SCALE DRAWING		CAD CONTROLLED PART. THE NOMINAL PART GEOMETRY IS CONTROLLED BY THE 3D CAD PART FILE.		DRAWING NUMBER: 20-70009



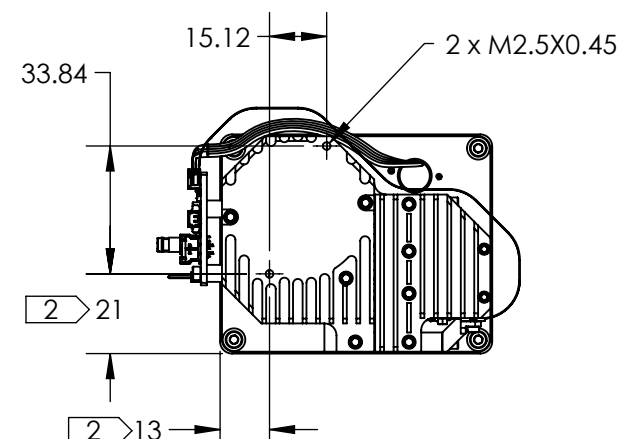
TOP VIEW



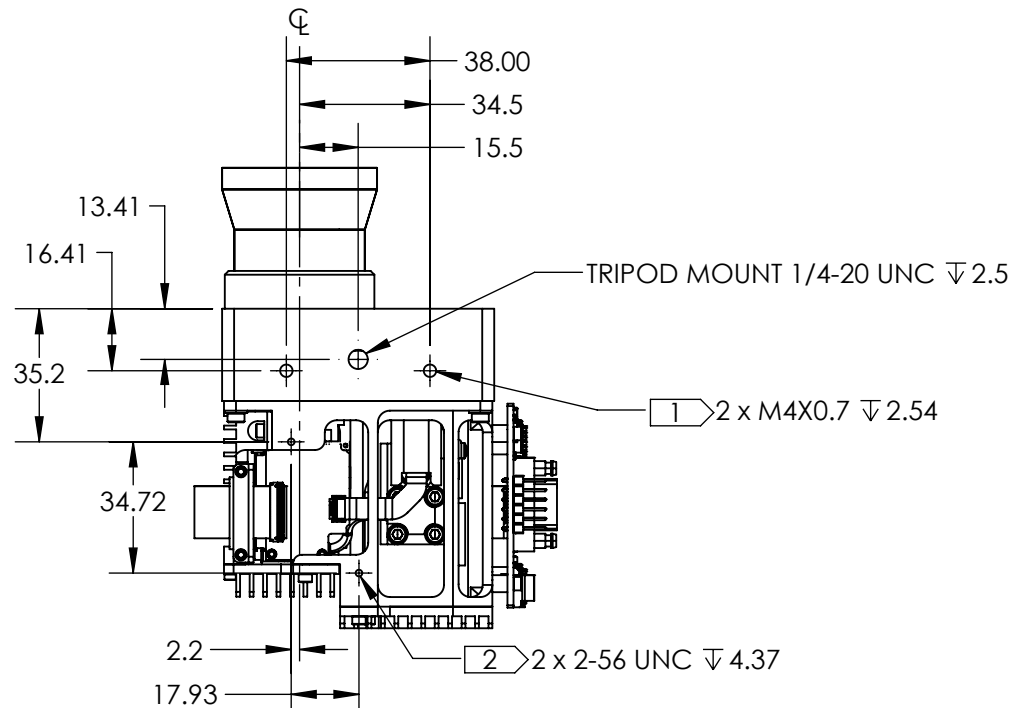
FRONT VIEW



RIGHT VIEW



BACK VIEW



BOTTOM VIEW

<div>Product Export Classification Control Number(ECCN): 6A003.b.4.a</div> <div>This document does not contain export-controlled technology.</div>	UNLESS OTHERWISE SPECIFIED DIM ARE IN MILLIMETERS		PROPRIETARY AND CONFIDENTIAL THE INFORMATION CONTAINED IN THIS DRAWING IS THE SOLE PROPERTY OF SIERRA OLYMPIA TECHNOLOGIES, INC. ANY REPRODUCTION IN PART OR AS A WHOLE WITHOUT THE WRITTEN PERMISSION OF SIERRA OLYMPIA TECHNOLOGIES, INC. IS PROHIBITED.		<div> SIERRA-OLYMPIA TECHNOLOGIES INC.</div>	
	X ± 2.5 mm	ANGLES X ± 1°				
	X.X ± 0.3 mm	X ± 1°				
	X.XX ± 0.13 mm	X.X ± 0.5°				
THIRD ANGLE PROJECTION			MATERIAL: N/A		DESCRIPTION: Mechanical ICD, Ventus HD6 Core 30mm	
			FINISH: N/A		SIZE B	DRAWN BY: D. KAMINSKI
DO NOT SCALE DRAWING			CAD CONTROLLED PART. THE NOMINAL PART GEOMETRY IS CONTROLLED BY THE 3D CAD PART FILE.		DRAWING NUMBER: 20-70009	Rev. C

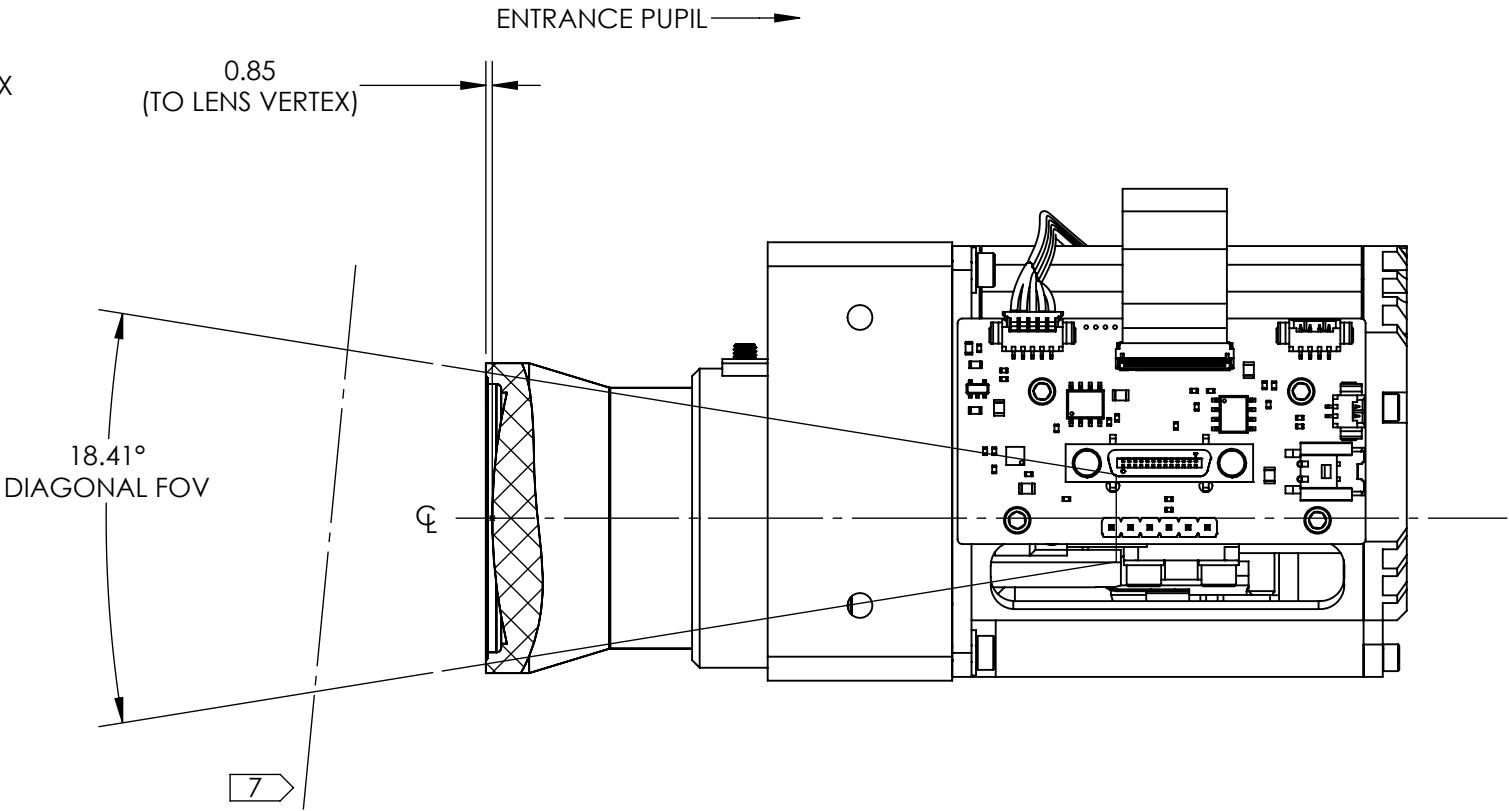
C


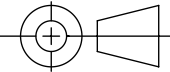
B

A

ENTRANCE PUPIL LOCATION = 82.55mm BEHIND LENS VERTEX
ENTRANCE PUPIL DIAMETER = 11.53mm

HFOV	14.6
VFOV	11.0
DFOV	18.4



<div>Product Export Classification Control Number(ECCN): 6A003.b.4.a</div> <div>This document does not contain export-controlled technology.</div>	UNLESS OTHERWISE SPECIFIED DIM ARE IN MILLIMETERS		PROPRIETARY AND CONFIDENTIAL THE INFORMATION CONTAINED IN THIS DRAWING IS THE SOLE PROPERTY OF SIERRA OLYMPIA TECHNOLOGIES, INC. ANY REPRODUCTION IN PART OR AS A WHOLE WITHOUT THE WRITTEN PERMISSION OF SIERRA OLYMPIA TECHNOLOGIES, INC. IS PROHIBITED.		 SIERRA-OLYMPIA TECHNOLOGIES INC.
	X ± 2.5 mm	ANGLES	MATERIAL: N/A		DESCRIPTION: Mechanical ICD, Ventus HD6 Core 30mm
	X.X ± 0.3 mm	X ± 1 °			
	X.XX ± 0.13 mm	X.X ± 0.5 °			
	THIRD ANGLE PROJECTION		FINISH: N/A		SIZE B
		CAD CONTROLLED PART. THE NOMINAL PART GEOMETRY IS CONTROLLED BY THE 3D CAD PART FILE.		DRAWN BY: D. KAMINSKI	SHEET 3 OF 3
DO NOT SCALE DRAWING				DRAWING NUMBER: 20-70009	Rev. C