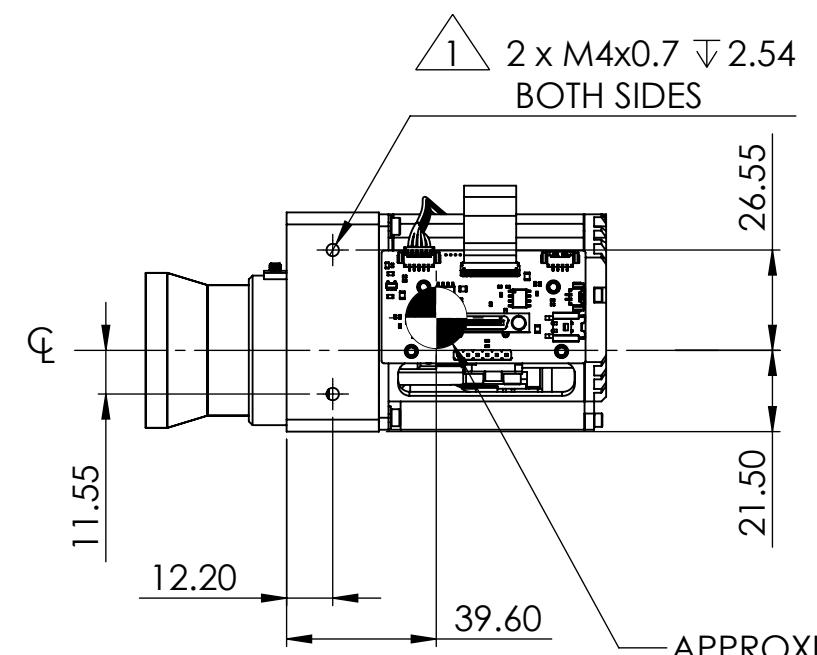
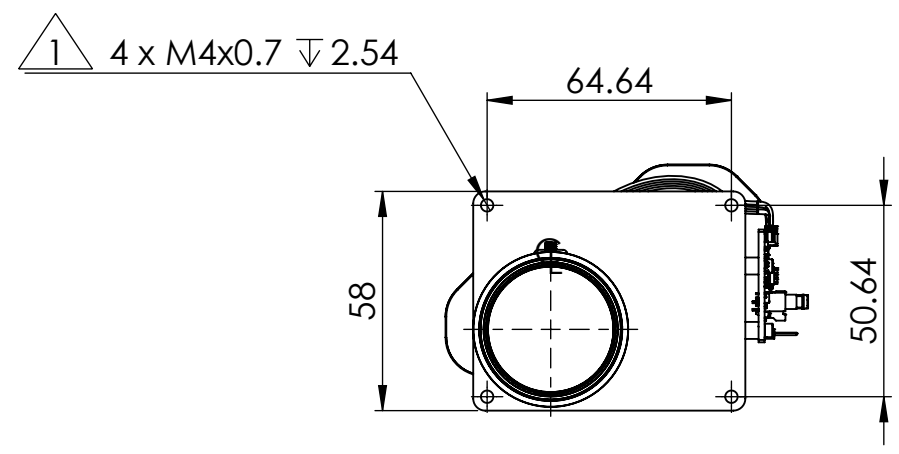
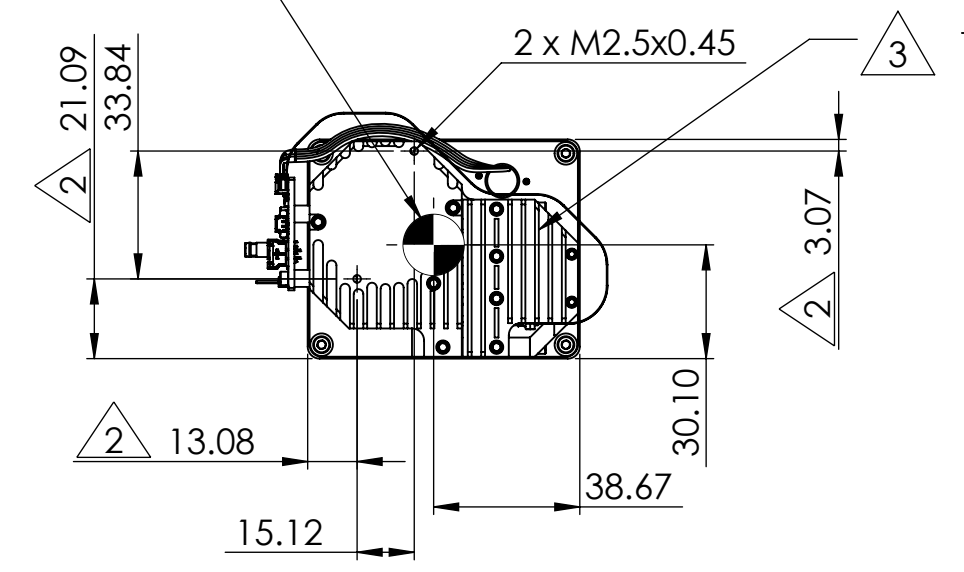


SL-HCR-310-01
Ventus HD6 Core 30mm

- NOTES:
1. WHEN MOUNTING CAMERA USE PRIMARY HOLES ON LENS MOUNT. SECONDARY HOLES ARE AVAILABLE ON SENSOR FRAME FOR ADDITIONAL SUPPORT AND FOR MOUNTING ACCESSORIES.
 2. DUE TO VARIATION IN ALIGNMENT AND MANUFACTURING TOLERANCES ALL SECONDARY MOUNTING HOLES HAVE VARIABLE LOCATION WITH RESPECT TO PRIMARY MOUNTING HOLES +/- 0.5mm.
 3. OVERALL THERMAL DISSIPATION REQUIREMENT IS APPROX. 7 WATTS. PRIMARY HEATSINKING SURFACES INDICATED
 4. OVERALL LENGTH DEPENDENT ON FOCUS POSITION, -2mm/+3mm
 5. FOR CONNECTOR INFORMATION, REFERENCE ELECTRICAL ICD DOC NO 20-70006
 6. APPROXIMATE MASS = 620g



APPROXIMATE CENTER OF GRAVITY



APPROXIMATE CENTER OF GRAVITY

REVISIONS					
ZONE	REV.	DESCRIPTION	ECO	DATE	ENGINEER
	A	INITIAL RELEASE	1308	2023/04/10	D.KAMINSKI

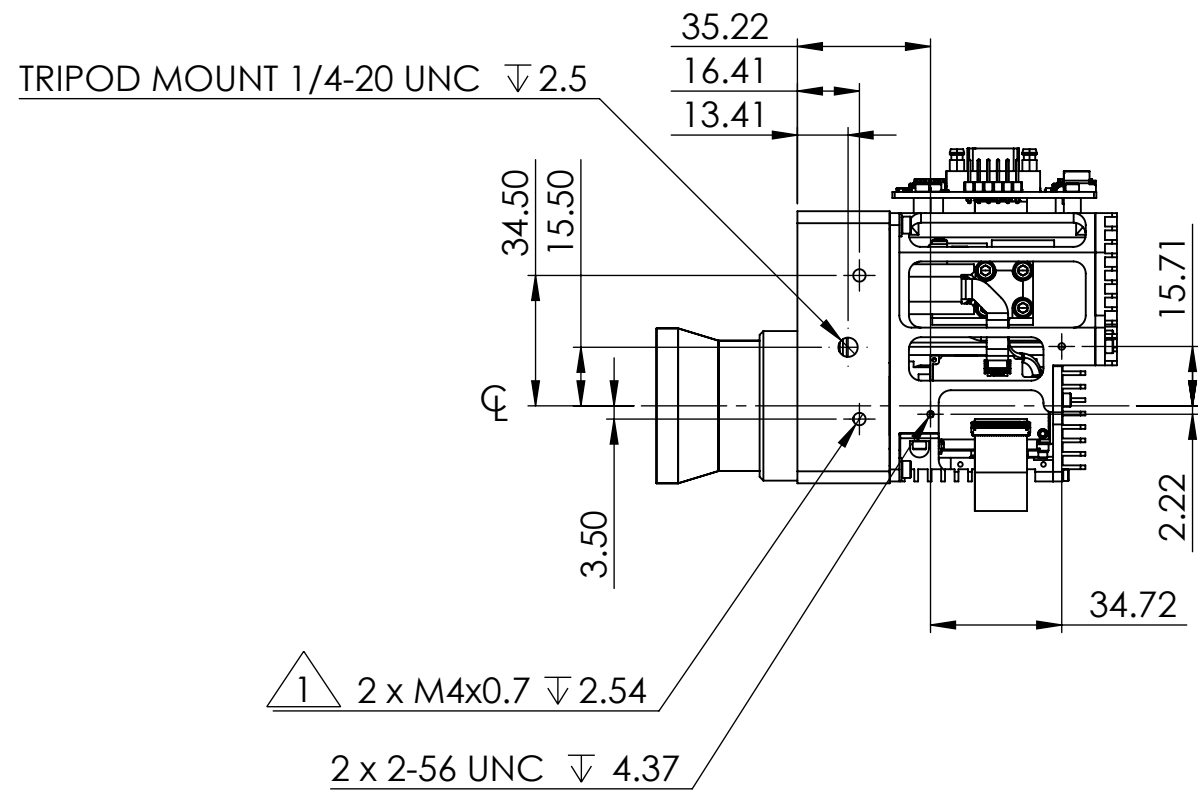
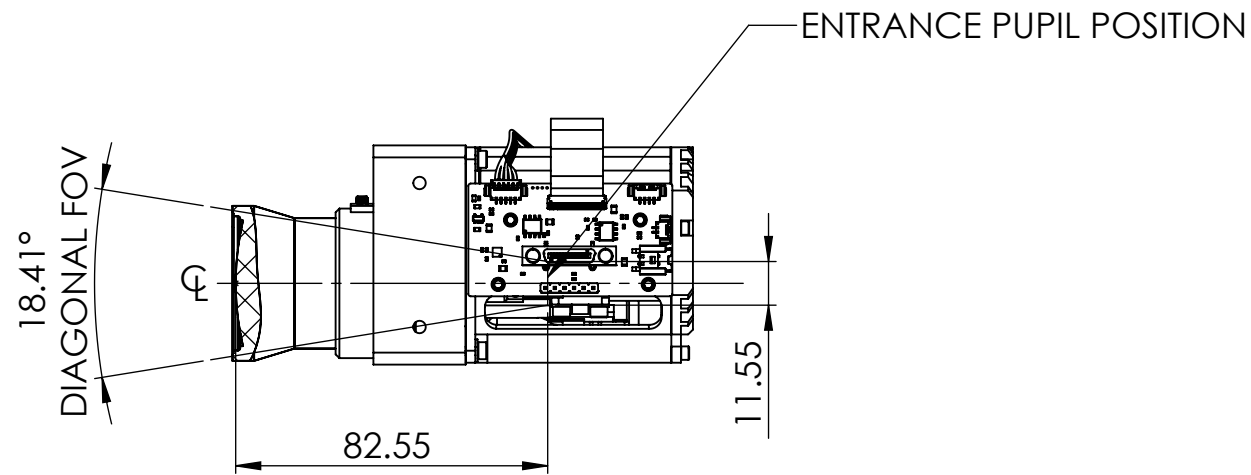
Product Export Classification Control Number(ECCN): 6A003.b.4.a This document is provided for integration purposes only and does not contain export-controlled technology	PROPRIETARY AND CONFIDENTIAL THE INFORMATION CONTAINED IN THIS DRAWING IS THE SOLE PROPERTY OF SIERRA OLYMPIA TECHNOLOGIES, INC. ANY REPRODUCTION IN PART OR AS A WHOLE WITHOUT THE WRITTEN PERMISSION OF SIERRA OLYMPIA TECHNOLOGIES, INC. IS PROHIBITED.	DIMENSIONS ARE IN MILLIMETERS TOLERANCES: +/- 0.254mm (0.01in) +/- 1deg EXCEPT WHERE NOTED.	CAD CONTROLLED PART. THE NOMINAL PART GEOMETRY IS CONTROLLED BY THE 3D CAD PART FILE. DO NOT SCALE DRAWING	Sierra-Olympia Tech., Inc.	
				DESCRIPTION: Mechanical ICD, Ventus HD6 Core 30mm	
MATERIAL: N/A				SIZE B	DRAWN BY: D.KAMINSKI
FINISH: N/A				DRAWING NUMBER: 20-70009	
COMMENTS:				SHEET 1 OF 2 Rev. A	

4

3

2

1



Product Export Classification Control Number(ECCN): 6A003.b.4.a This document is provided for integration purposes only and does not contain export-controlled technology	PROPRIETARY AND CONFIDENTIAL THE INFORMATION CONTAINED IN THIS DRAWING IS THE SOLE PROPERTY OF SIERRA OLYMPIA TECHNOLOGIES, INC. ANY REPRODUCTION IN PART OR AS A WHOLE WITHOUT THE WRITTEN PERMISSION OF SIERRA OLYMPIA TECHNOLOGIES, INC. IS PROHIBITED.	DIMENSIONS ARE IN MILLIMETERS TOLERANCES: +/- 0.254mm (0.01 in) +/- 1deg EXCEPT WHERE NOTED.	CAD CONTROLLED PART, THE NOMINAL PART GEOMETRY IS CONTROLLED BY THE 3D CAD PART FILE. DO NOT SCALE DRAWING	Sierra-Olympia Tech., Inc.	
		MATERIAL: N/A FINISH: N/A	DESCRIPTION: Mechanical ICD, Ventus HD6 Core 30mm		
COMMENTS:		SIZE B	DRAWN BY: D.KAMINSKI	SHEET 2 OF 2	
		DRAWING NUMBER: 20-70009		A	

4

3

2

1