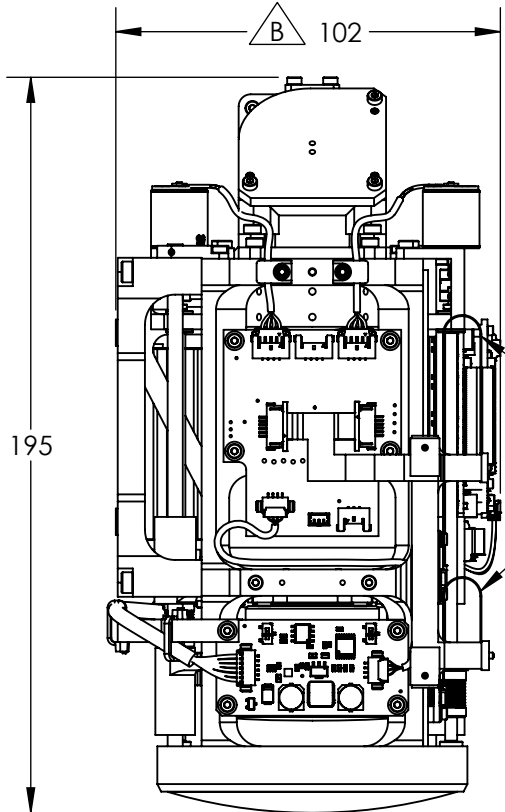
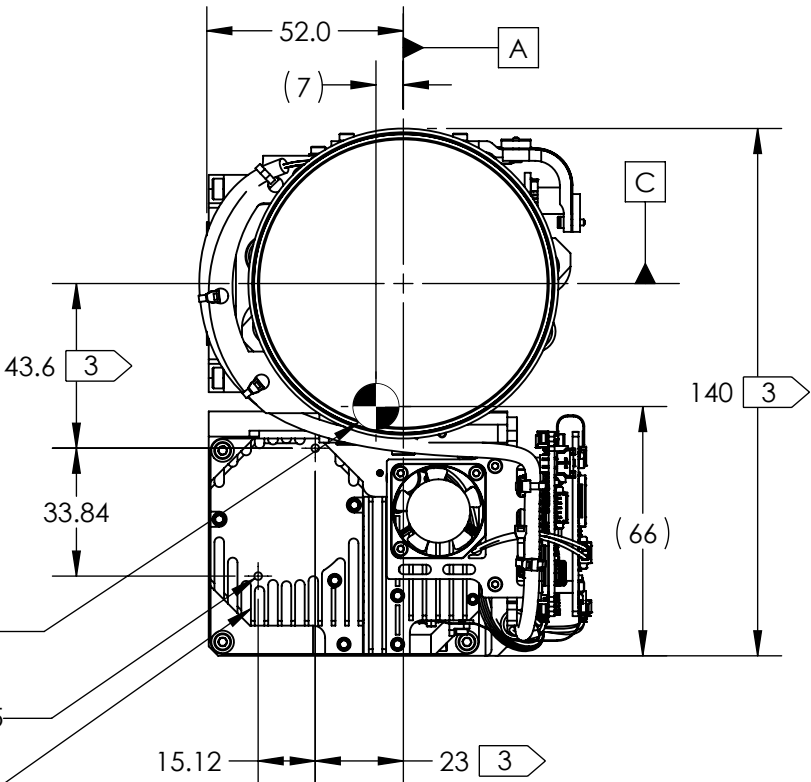


NOTES:

1.
- WHEN MOUNTING CAMERA, USE PRIMARY HOLES ON LENS. SECONDARY HOLES ARE AVAILABLE ON SENSOR FRAME FOR ADDITIONAL SUPPORT AND FOR MOUNTING ACCESSORIES.
2.
- DUE TO VARIATION IN BACKWORKING DISTANCE, SENSOR POSITION AND SECONDARY MOUNTING HOLES HAVE VARIABLE LOCATION WITH RESPECT TO DATUM B +/- 2MM
3.
- THE LENS ASSEMBLY AND SENSOR ASSEMBLY HAVE VARIABLE ALIGNMENT IN ORDER TO FACILITATE OPTICAL CALIBRATION. DATUMS A AND C ARE +/- 1MM RELATIVE TO SECONDARY MOUNTING HOLES AND SENSOR POSITION
4.
- OVERALL THERMAL DISSIPATION IS APPROX. 16 WATTS. PRIMARY HEATSINKING SURFACES INDICATED
5.
- TRIPOD MOUNT TO BE USED FOR SHIPPING AND TESTING, NOT FOR INTEGRATION.
6.
- FOR CONNECTOR INFORMATION, REFERENCE ELECTRICAL ICD DOC NO 20-70005
7.
- RECOMMENDED WINDOW VERTICAL TILT ANGLE AT WIDE ZOOM = 9.5 ° FOR ADDITIONAL WINDOW PLACEMENT INFORMATION SEE PAGE 4
8.
- APPROXIMATE MASS = 1420g WITH SIDE MOUNTING BRACKET AND TRIPOD MOUNT, TRIPOD MOUNT = 21g, MOUNTING BRACKET = 62g

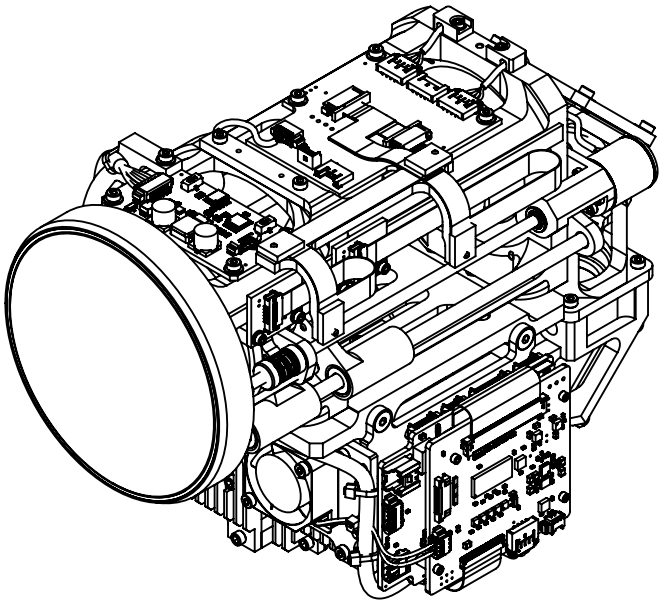


TOP VIEW

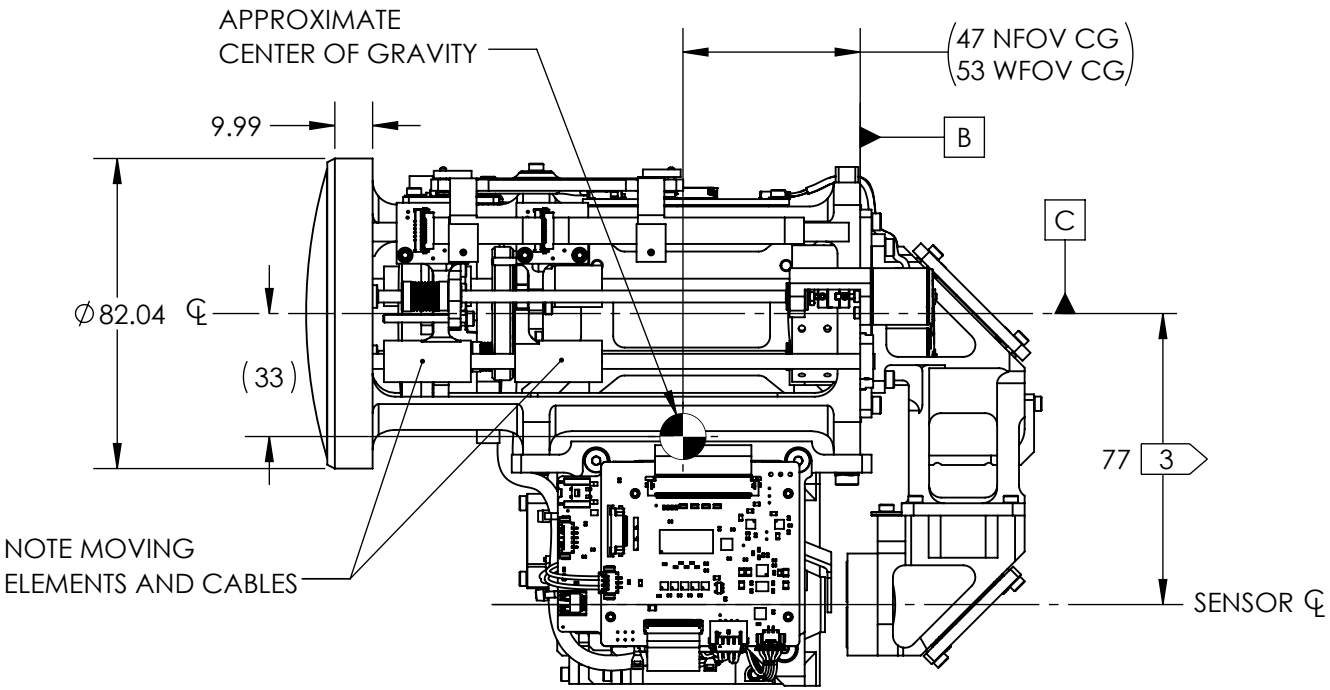


FRONT VIEW

REVISIONS					
ZONE	REV	DESCRIPTION	ECO	DATE	ENGINEER
	A	INITIAL RELEASE	1413	2023-06-26	D.KAMINSKI
	B	LENS UPDATE, WIDTH REDUCED, DOWEL PIN FEATURES ADDED	1749	2024-05-22	M.SCOTT
2-C3	C	MISSING DIM, DIMENSIONS UPDATED	1806	2024-10-10	M. SCOTT

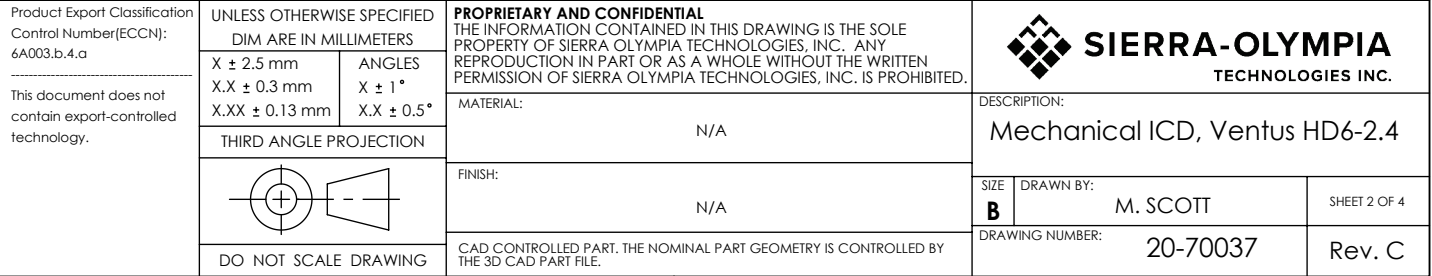


NOTE MOVING
ELEMENTS AND CABLES



RIGHT VIEW

<div>Product Export Classification Control Number(ECCN): 6A003.b.4.a</div> <div>This document does not contain export-controlled technology.</div>	UNLESS OTHERWISE SPECIFIED DIM ARE IN MILLIMETERS		<div>PROPRIETARY AND CONFIDENTIAL</div> <div>THE INFORMATION CONTAINED IN THIS DRAWING IS THE SOLE PROPERTY OF SIERRA OLYMPIA TECHNOLOGIES, INC. ANY REPRODUCTION IN PART OR AS A WHOLE WITHOUT THE WRITTEN PERMISSION OF SIERRA OLYMPIA TECHNOLOGIES, INC. IS PROHIBITED.</div>		<div> SIERRA-OLYMPIA TECHNOLOGIES INC.</div>	
	X ± 2.5 mm	ANGLES				
	X.X ± 0.3 mm	X ± 1 °				
	X.XX ± 0.13 mm	X.X ± 0.5 °				
THIRD ANGLE PROJECTION			MATERIAL:		N/A	
			FINISH:		N/A	
DO NOT SCALE DRAWING			CAD CONTROLLED PART. THE NOMINAL PART GEOMETRY IS CONTROLLED BY THE 3D CAD PART FILE.		DESCRIPTION: Mechanical ICD, Ventus HD6-2.4	
			SIZE B		DRAWN BY: M. SCOTT	SHEET 1 OF 4
			DRAWING NUMBER: 20-70037		Rev. C	

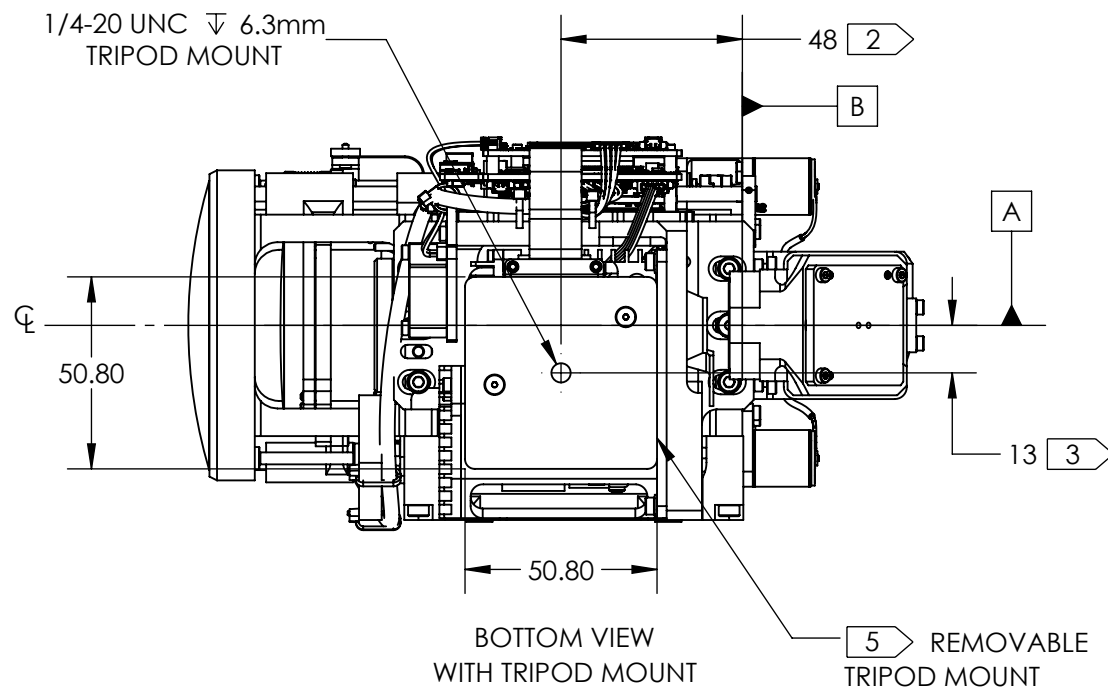
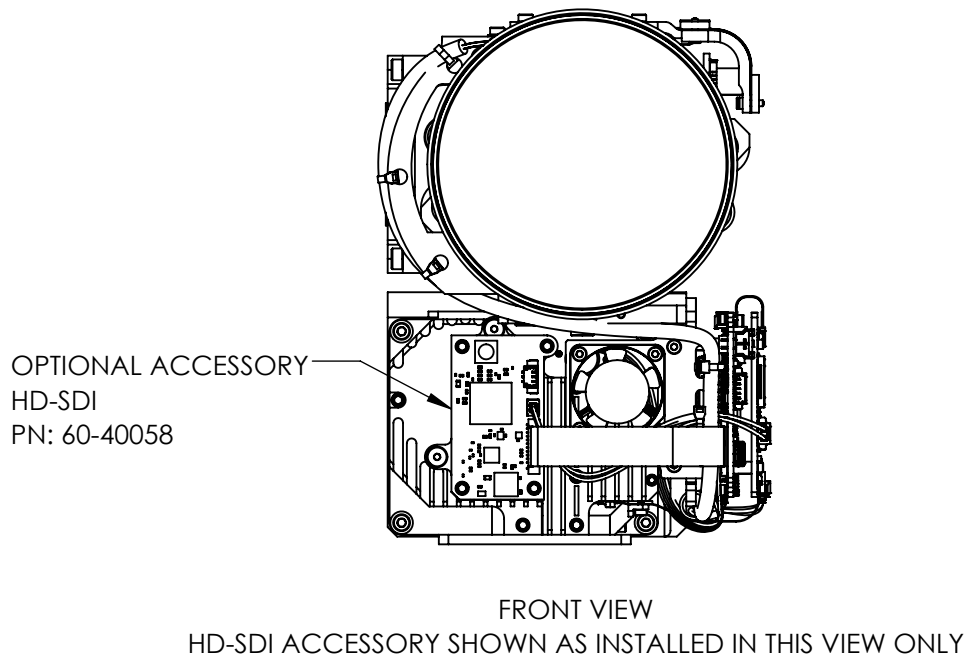
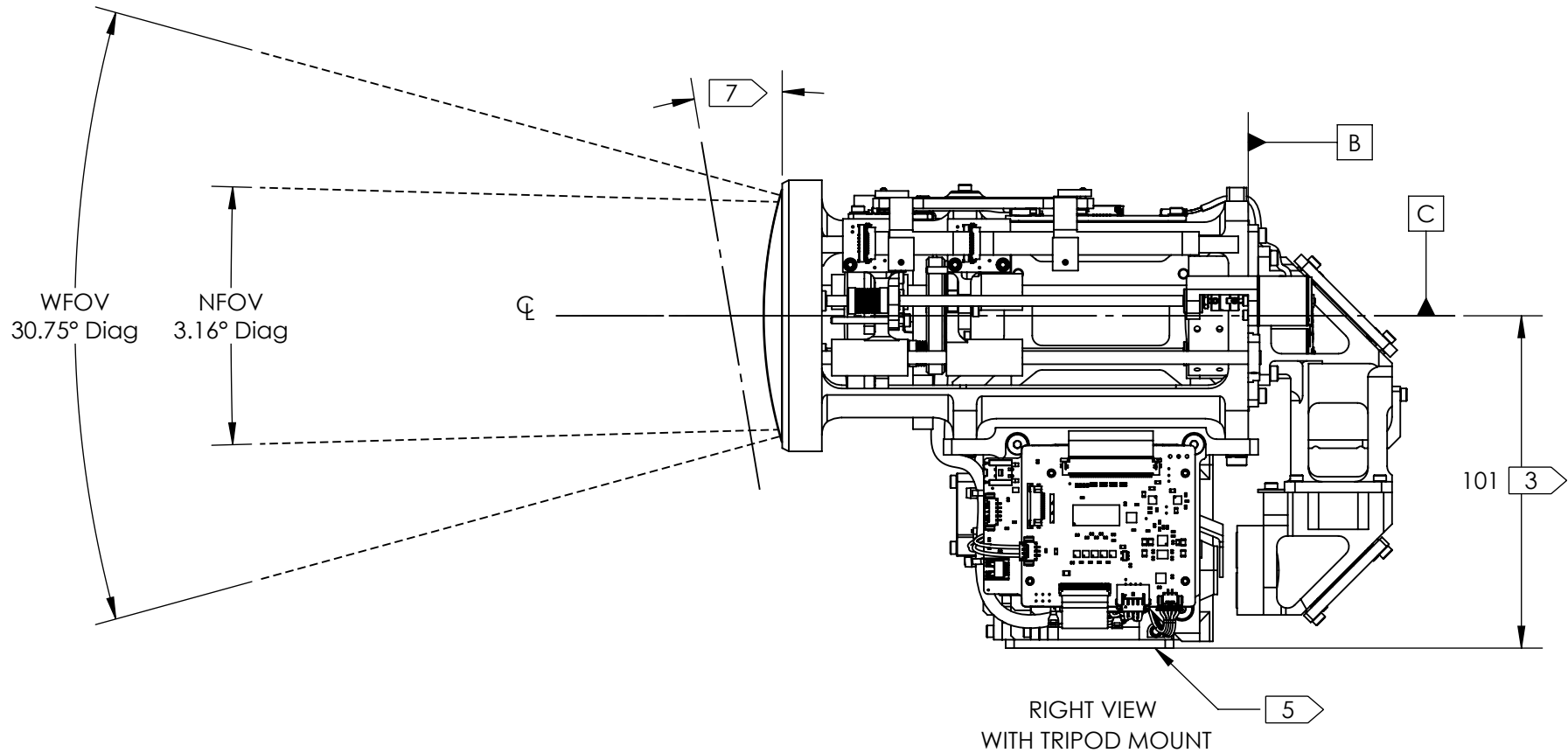


WIDE FIELDS OF VIEW
ENTRANCE PUPIL LOCATION 21.61mm IN FRONT OF DATUM B
ENTRANCE PUPIL DIAMETER 6.92mm

HFOV	23.93°
VFOV	17.90°
DFOV	30.75°

NARROW FIELDS OF VIEW
ENTRANCE PUPIL LOCATION 148.11mm IN FRONT OF DATUM B
ENTRANCE PUPIL DIAMETER 69.23mm

HFOV	2.42°
VFOV	1.80°
DFOV	3.16°



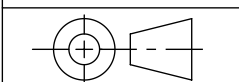
Product Export Classification
Control Number(ECCN):
6A003.b.4.a

This document does not
contain export-controlled
technology.

UNLESS OTHERWISE SPECIFIED
DIM ARE IN MILLIMETERS

X \pm 2.5 mm	ANGLES
X.X \pm 0.3 mm	X \pm 1°
X.XX \pm 0.13 mm	X.X \pm 0.5°

THIRD ANGLE PROJECTION



DO NOT SCALE DRAWING

PROPRIETARY AND CONFIDENTIAL
THE INFORMATION CONTAINED IN THIS DRAWING IS THE SOLE
PROPERTY OF SIERRA OLYMPIA TECHNOLOGIES, INC. ANY
REPRODUCTION IN PART OR AS A WHOLE WITHOUT THE WRITTEN
PERMISSION OF SIERRA OLYMPIA TECHNOLOGIES, INC. IS PROHIBITED.

MATERIAL:

N/A

FINISH:

N/A

CAD CONTROLLED PART. THE NOMINAL PART GEOMETRY IS CONTROLLED BY
THE 3D CAD PART FILE.

SIERRA-OLYMPIA
TECHNOLOGIES INC.

DESCRIPTION:

Mechanical ICD, Ventus HD6-2.4

SIZE
B

DRAWN BY:

M. SCOTT

SHEET 3 OF 4

DRAWING NUMBER:

20-70037

Rev. C

