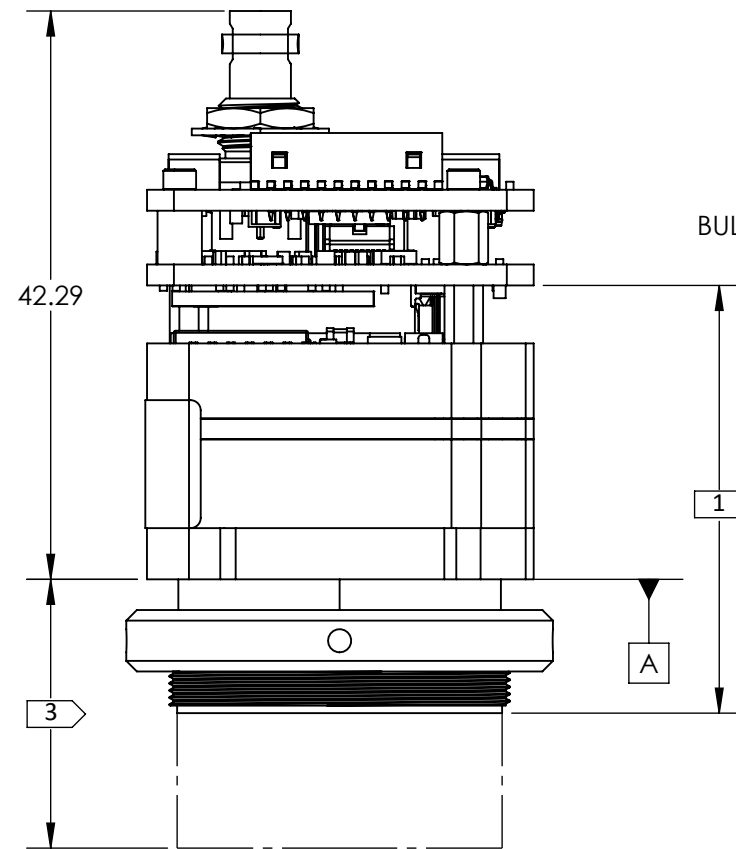


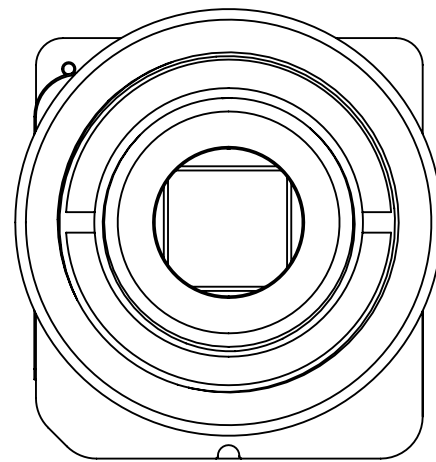
NOTES:

- 1. REFER TO DRS MECHANICAL ICD, 1028737 TENUM640 MECHANICAL ICD, FOR DETAILED SENSOR CORE DIMENSIONS AND MOUNTING INFO
- 2. ESTIMATED POWER DRAW IS 2.6W STEADY-STATE. CONDUCTIVE OR CONVECTIVE THERMAL DISSIPATION IS RECOMMENDED.
- 3. SEE SHEET 5 FOR CONFIGURATIONS, LENS POSITION RELATIVE TO CAMERA BODY WILL VARY WITH FOCUS. REFER TO DRS MECHANICAL ICD, 1028737 TENUM640 MECHANICAL ICD, FOR LENS DIMENSIONS
- 4. FOR ADDITIONAL CONNECTOR INFORMATION REFERENCE ELECTRICAL ICD DOC 20-70054
- 5. OUTSIDE BOARD DIMENSION AND HOLE LOCATION TOLERANCE: +/- 0.13 MM
- 6. APPROX MASS: SOTI SDI BOARDS AND HARDWARE 12 g

REVISIONS					
ZONE	REV	DESCRIPTION	ECO	DATE	ENGINEER
	A	INITIAL RELEASE	1753	2024-04-23	M. SCOTT

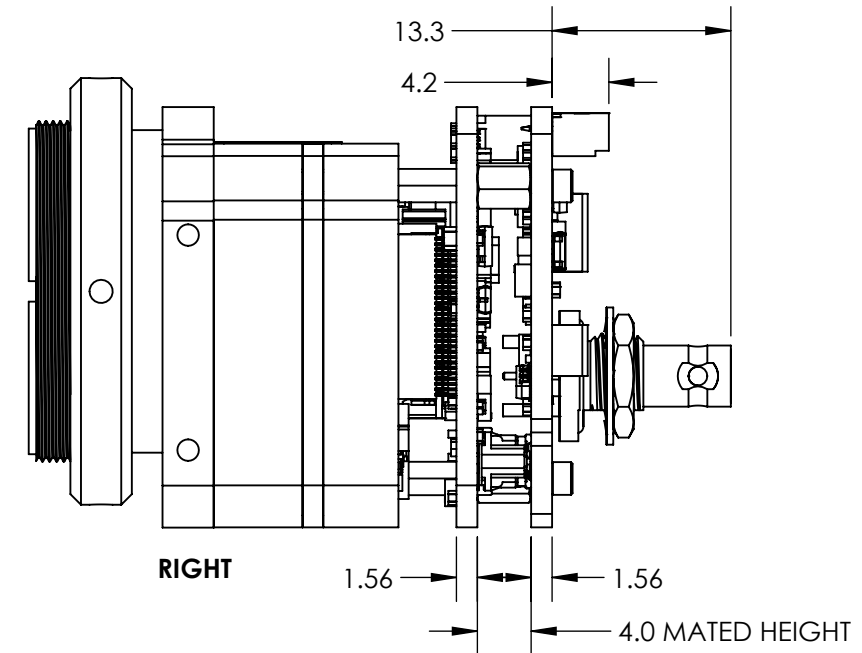
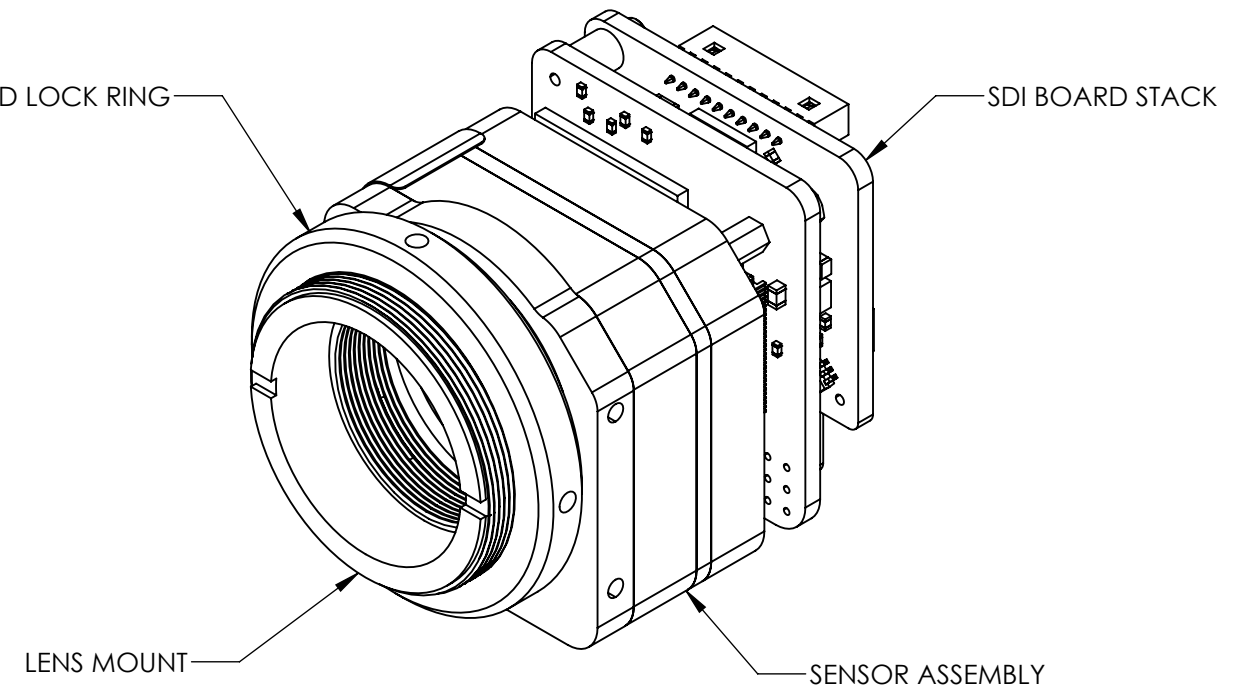


TOP



FRONT

M19 LENS MOUNT



RIGHT

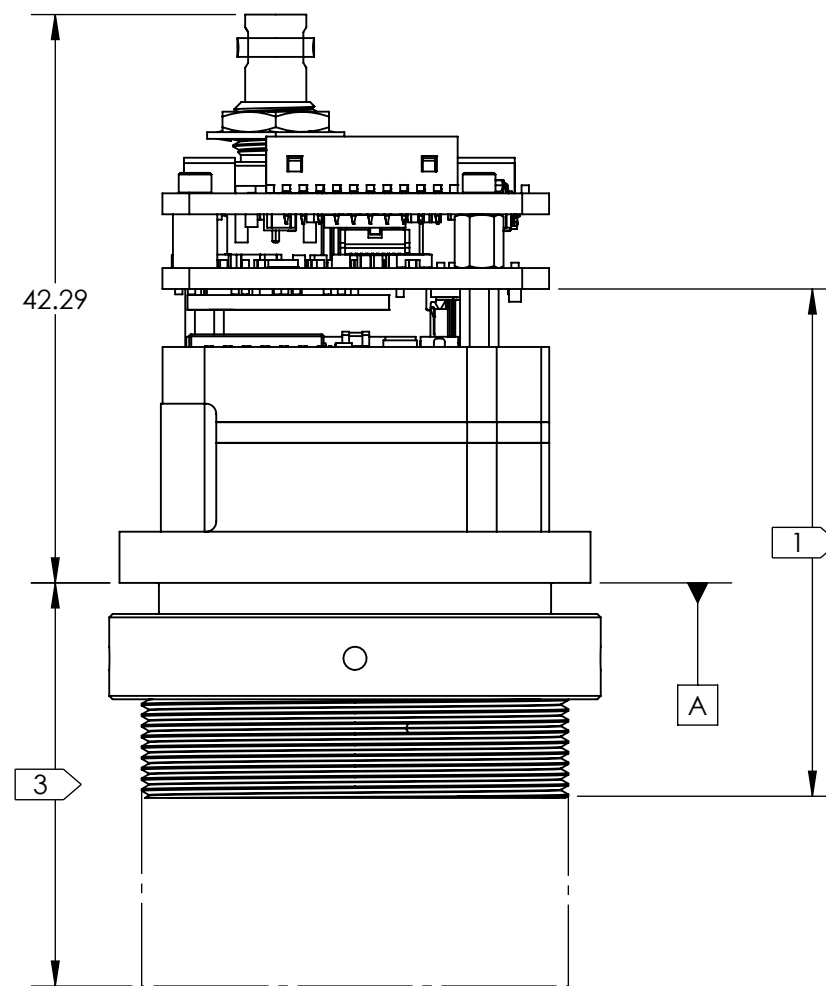
Product Export Classification Control Number(ECCN): 6A003.b.4.b  This document does not contain export-controlled technology.	UNLESS OTHERWISE SPECIFIED DIM ARE IN MILLIMETERS X ± 2.5 mm    ANGLES X ± 1° X.X ± 0.3 mm    X.X ± 0.5° X.XX ± 0.13 mm		<b>PROPRIETARY AND CONFIDENTIAL</b> THE INFORMATION CONTAINED IN THIS DRAWING IS THE SOLE PROPERTY OF SIERRA OLYMPIA TECHNOLOGIES, INC. ANY REPRODUCTION IN PART OR AS A WHOLE WITHOUT THE WRITTEN PERMISSION OF SIERRA OLYMPIA TECHNOLOGIES, INC. IS PROHIBITED.  MATERIAL: N/A  FINISH: N/A  CAD CONTROLLED PART. THE NOMINAL PART GEOMETRY IS CONTROLLED BY THE 3D CAD PART FILE.	<b>SIERRA-OLYMPIA TECHNOLOGIES INC.</b> DESCRIPTION: Mechanical ICD, Viento 10 SDI			
	THIRD ANGLE PROJECTION					SIZE: <b>B</b>	DRAWN BY: M. SCOTT
						DRAWING NUMBER: 20-70056	Rev. A
	DO NOT SCALE DRAWING						

4

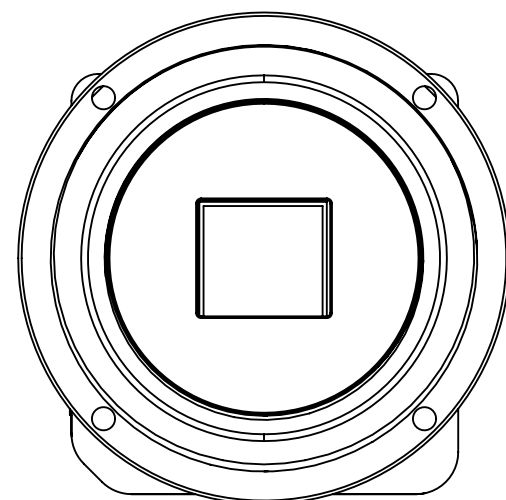
3

2

1

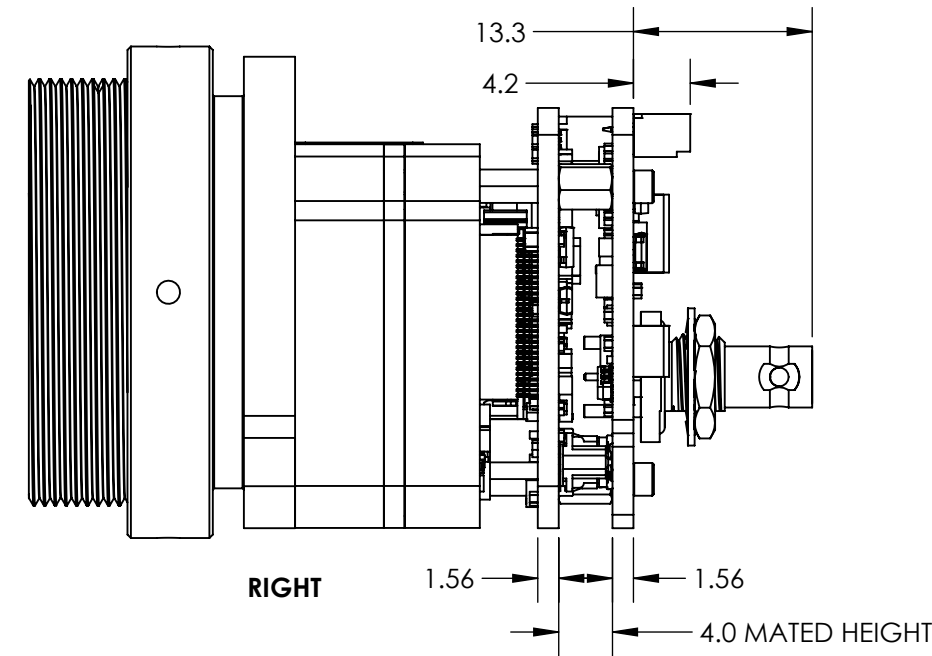
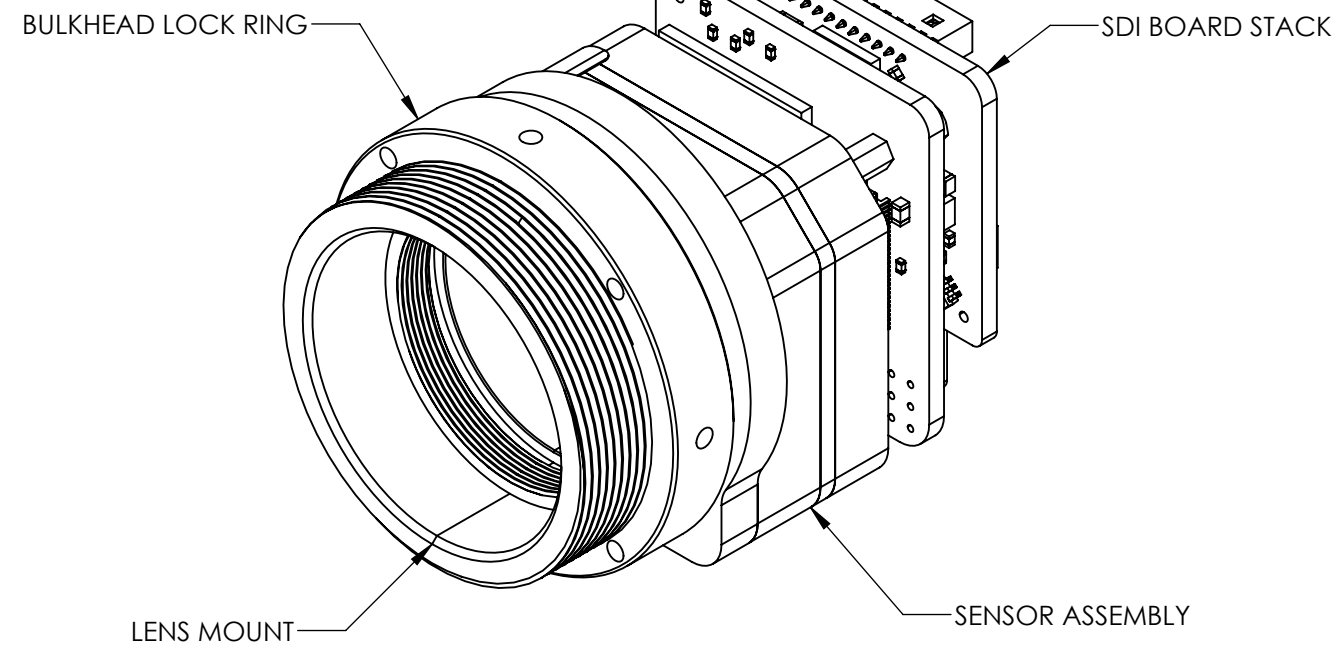


TOP



FRONT

### M24 LENS MOUNT



RIGHT

Product Export Classification Control Number(ECCN): 6A003.b.4.b  This document does not contain export-controlled technology.	UNLESS OTHERWISE SPECIFIED DIM ARE IN MILLIMETERS		<b>PROPRIETARY AND CONFIDENTIAL</b> THE INFORMATION CONTAINED IN THIS DRAWING IS THE SOLE PROPERTY OF SIERRA OLYMPIA TECHNOLOGIES, INC. ANY REPRODUCTION IN PART OR AS A WHOLE WITHOUT THE WRITTEN PERMISSION OF SIERRA OLYMPIA TECHNOLOGIES, INC. IS PROHIBITED.  MATERIAL: N/A  FINISH: N/A  CAD CONTROLLED PART. THE NOMINAL PART GEOMETRY IS CONTROLLED BY THE 3D CAD PART FILE.	<b>SIERRA-OLYMPIA TECHNOLOGIES INC.</b>			
	X ± 2.5 mm X.X ± 0.3 mm X.XX ± 0.13 mm	ANGLES X ± 1° X.X ± 0.5°				DESCRIPTION: Mechanical ICD, Viento 10 SDI	
	THIRD ANGLE PROJECTION  			SIZE <b>B</b>		DRAWN BY: M. SCOTT	SHEET 2 OF 5
	DO NOT SCALE DRAWING			DRAWING NUMBER: 20-70056		Rev. A	

4

3

2

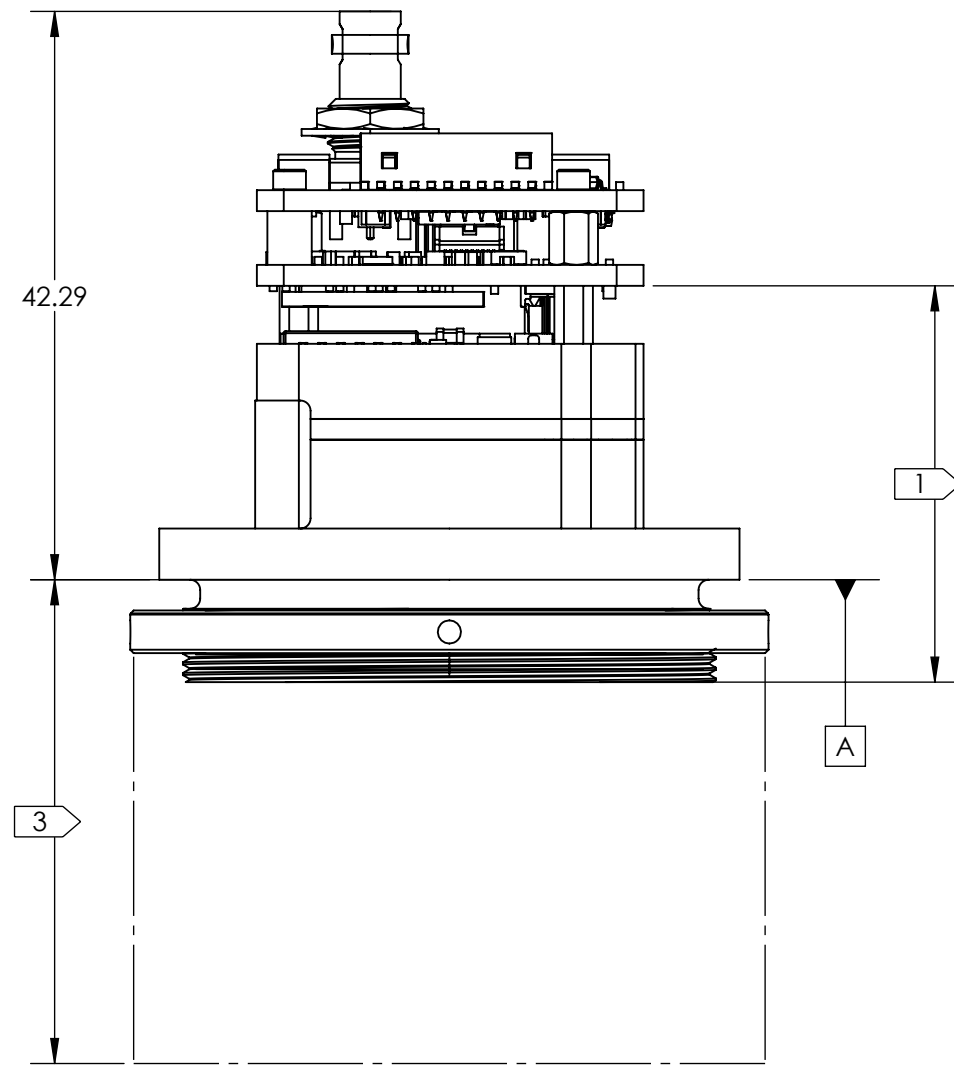
1

4

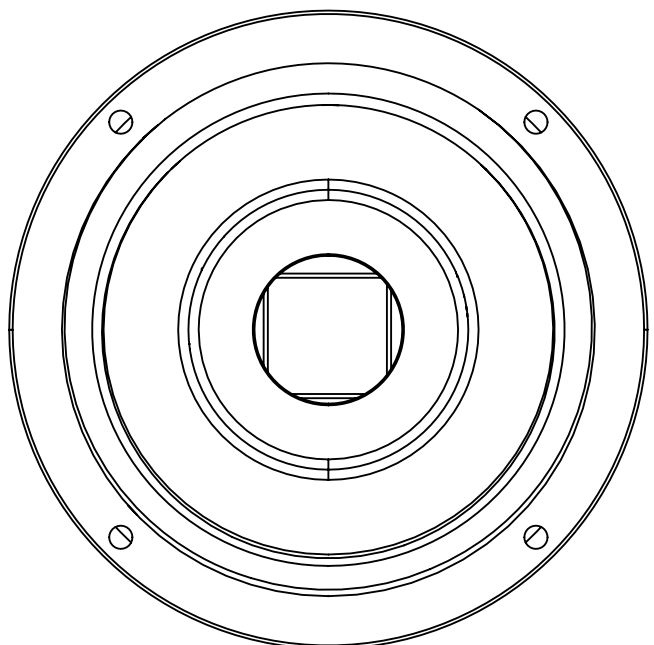
3

2

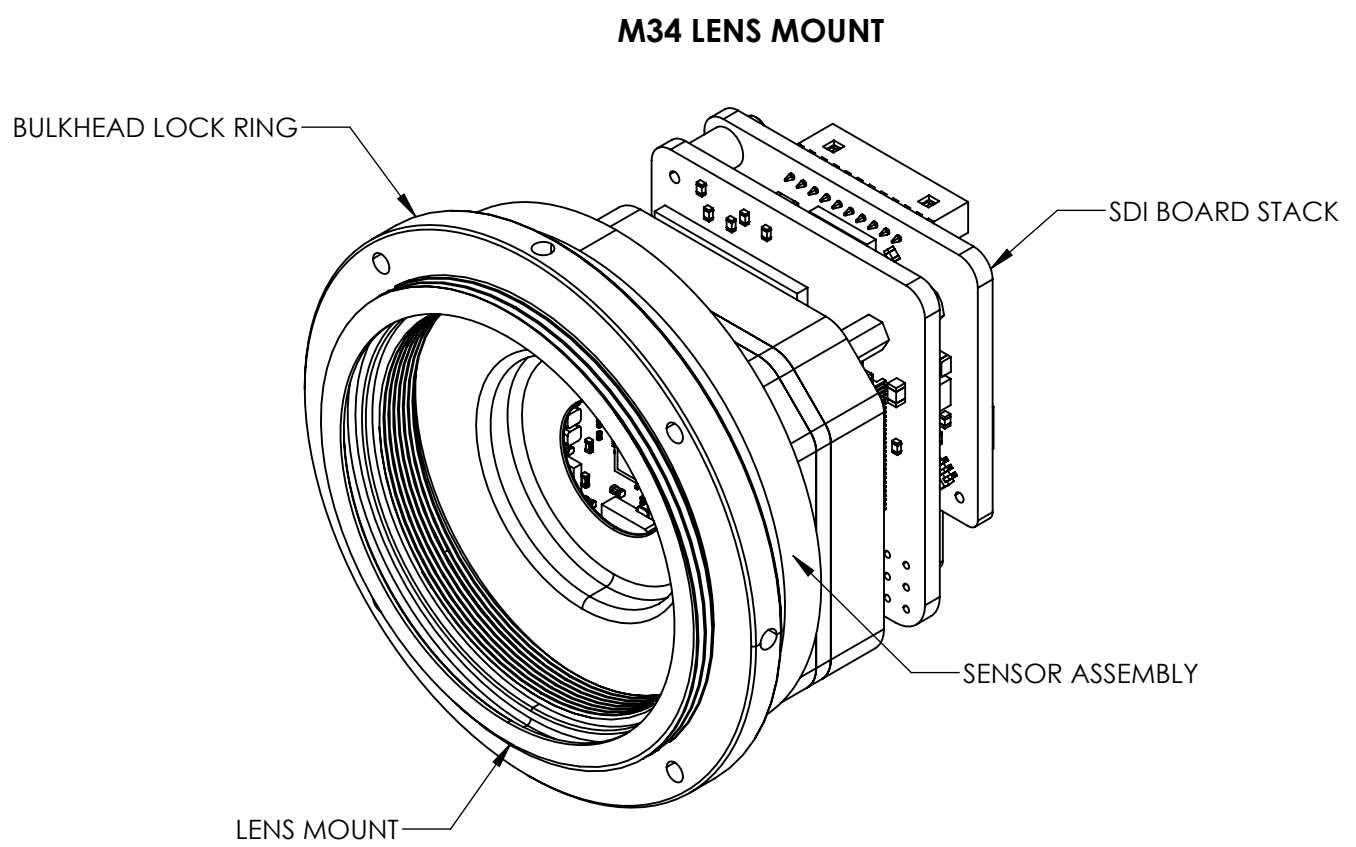
1



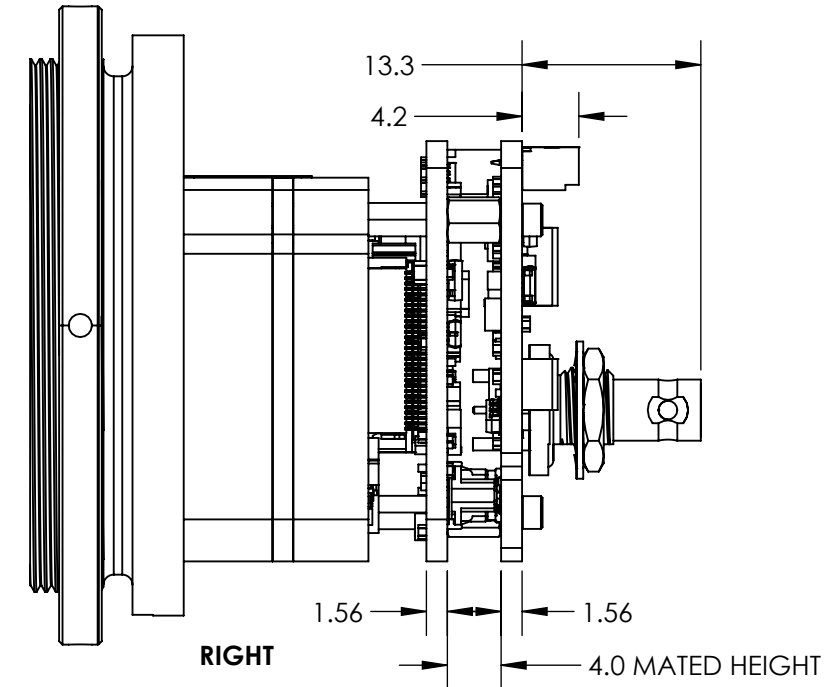
TOP



FRONT



M34 LENS MOUNT



RIGHT

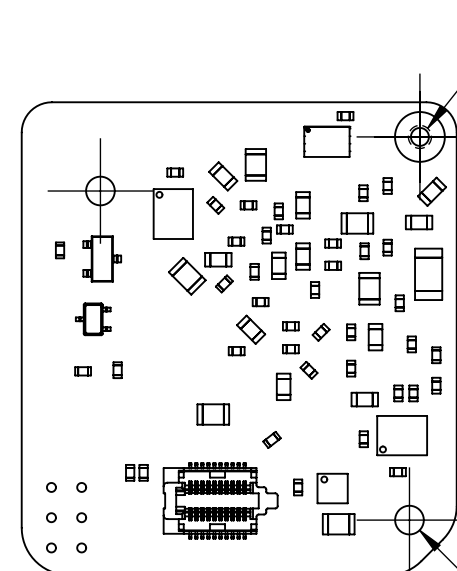
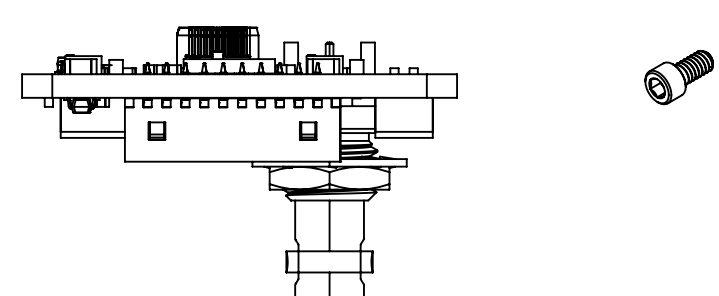
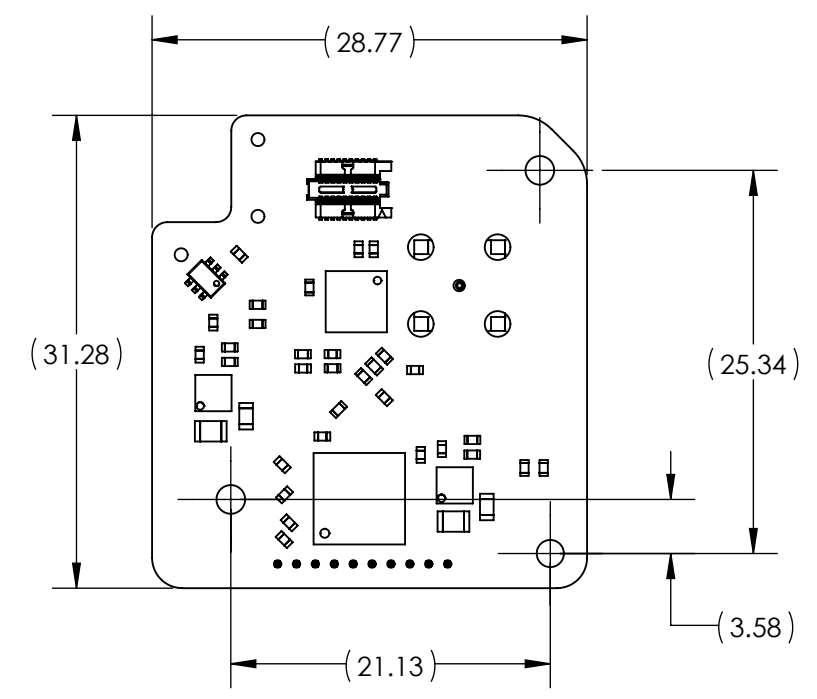
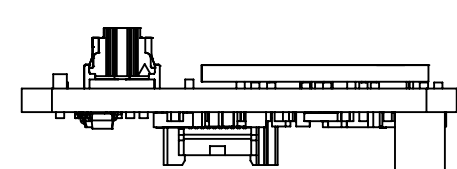
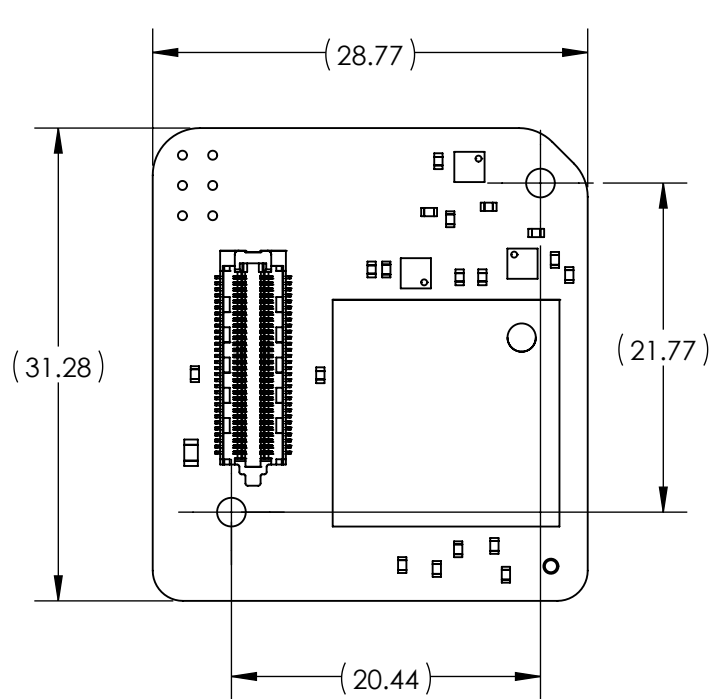
Product Export Classification Control Number(ECCN): 6A003.b.4.b  This document does not contain export-controlled technology.	UNLESS OTHERWISE SPECIFIED DIM ARE IN MILLIMETERS X ± 2.5 mm    ANGLES X ± 1° X.X ± 0.3 mm    X.X ± 0.5° X.XX ± 0.13 mm		<b>PROPRIETARY AND CONFIDENTIAL</b> THE INFORMATION CONTAINED IN THIS DRAWING IS THE SOLE PROPERTY OF SIERRA OLYMPIA TECHNOLOGIES, INC. ANY REPRODUCTION IN PART OR AS A WHOLE WITHOUT THE WRITTEN PERMISSION OF SIERRA OLYMPIA TECHNOLOGIES, INC. IS PROHIBITED.  MATERIAL: N/A  FINISH: N/A  CAD CONTROLLED PART. THE NOMINAL PART GEOMETRY IS CONTROLLED BY THE 3D CAD PART FILE.	<b>SIERRA-OLYMPIA TECHNOLOGIES INC.</b> DESCRIPTION: Mechanical ICD, Viento 10 SDI	
	THIRD ANGLE PROJECTION 				
	DO NOT SCALE DRAWING			DRAWING NUMBER: 20-70056 Rev. A	

4

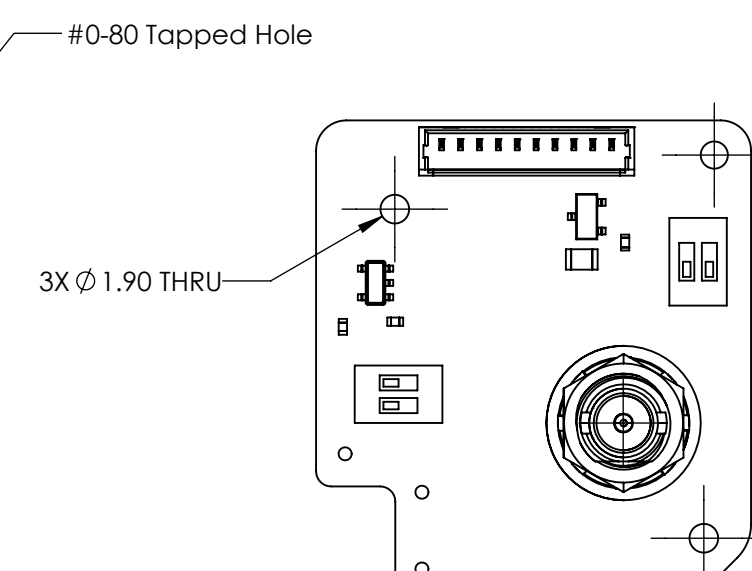
3

2

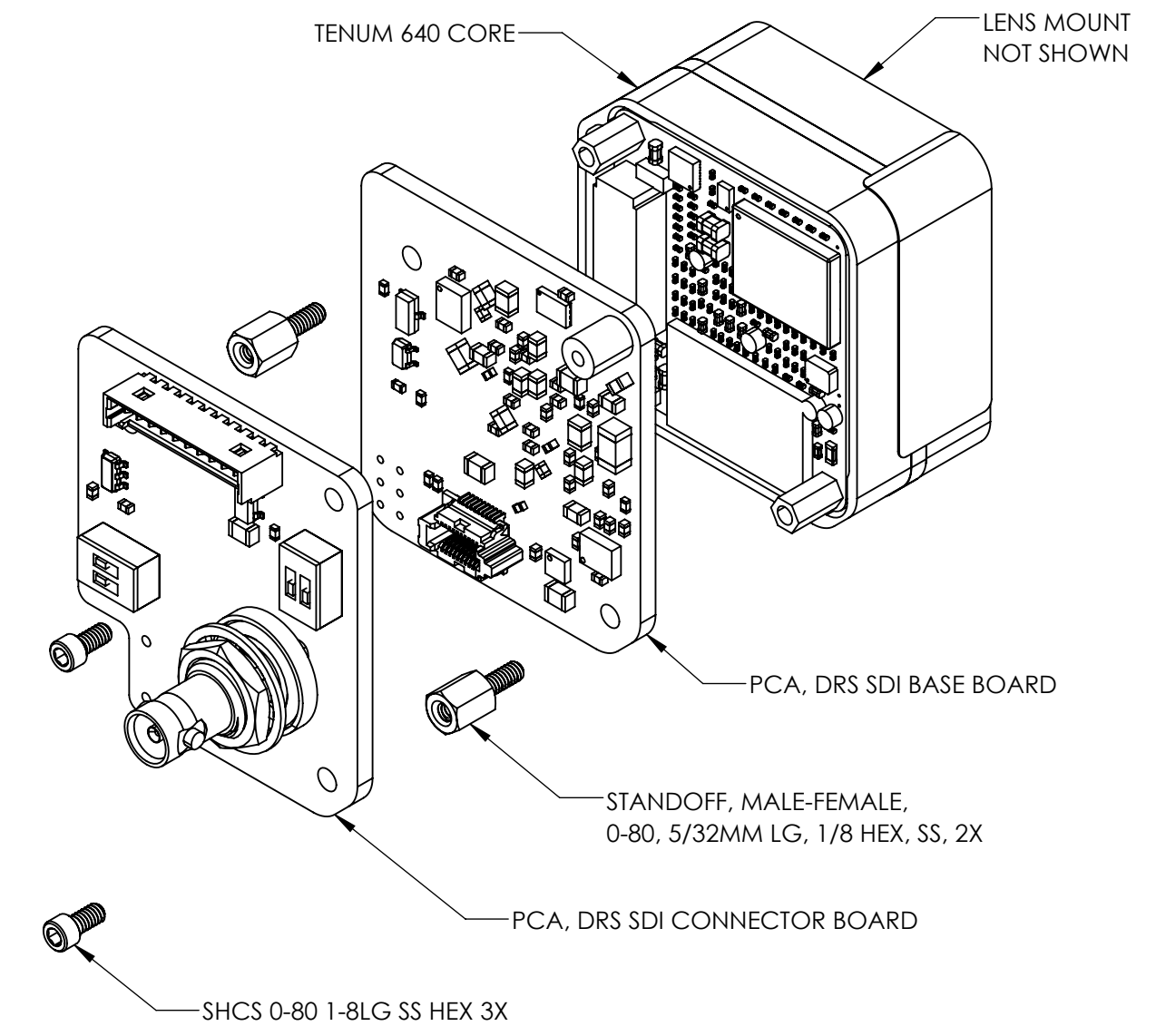
1



PCA, DRS SDI BASE BOARD  
APPROX MASS: 5 g



PCA, DRS SDI CONNECTOR BOARD  
APPROX MASS: 6 g



Product Export Classification Control Number(ECCN): 6A003.b.4.b  This document does not contain export-controlled technology.	UNLESS OTHERWISE SPECIFIED DIM ARE IN MILLIMETERS		<b>PROPRIETARY AND CONFIDENTIAL</b> THE INFORMATION CONTAINED IN THIS DRAWING IS THE SOLE PROPERTY OF SIERRA OLYMPIA TECHNOLOGIES, INC. ANY REPRODUCTION IN PART OR AS A WHOLE WITHOUT THE WRITTEN PERMISSION OF SIERRA OLYMPIA TECHNOLOGIES, INC. IS PROHIBITED.		<b>SIERRA-OLYMPIA TECHNOLOGIES INC.</b>
	X ± 2.5 mm X.X ± 0.3 mm X.XX ± 0.13 mm	ANGLES X ± 1° X.X ± 0.5°	MATERIAL:  N/A		
THIRD ANGLE PROJECTION  			FINISH:  N/A		SIZE DRAWN BY: <b>B</b> M. SCOTT
DO NOT SCALE DRAWING			CAD CONTROLLED PART. THE NOMINAL PART GEOMETRY IS CONTROLLED BY THE 3D CAD PART FILE.		SHEET 4 OF 5 DRAWING NUMBER: 20-70056 Rev. A

4


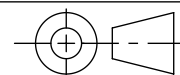
3

2

1

TABLE 1

PART NUMBER	DESCRIPTION	LENS MOUNT	TOTAL MASS, INCLUDING BOARDS (g)	SEE DRS ICD FOR LENS DIMENSIONS
SL-T5-6626-A10	Viento 10 SDI, 640 x 512, 10 deg HFOV, 35mm, 60Hz	M34	149	1027621-L1#0
SL-T5-6616-A12	Viento 10 SDI, 640 x 512, 12 deg HFOV, 30mm, 60Hz	M24	87	1027621-LD#0
SL-T5-6606-A18	Viento 10 SDI, 640 x 512, 18 deg HFOV, 20mm, 60Hz	M19	60	1027621-L3#0
SL-T5-6606-A25	Viento 10 SDI, 640 x 512, 25 deg HFOV, 15mm, 60Hz	M19	57	1027621-L6#0
SL-T5-6616-A40	Viento 10 SDI, 640 x 512, 40 deg HFOV, 9.3mm, 60Hz	M24	70	1027621-LH#0
SL-T5-6606-A50	Viento 10 SDI, 640 x 512, 50 deg HFOV, 7.7mm, 60Hz	M19	52	1027621-LA#0
SL-T5-6606-A70	Viento 10 SDI, 640 x 512, 70 deg HFOV, 5.5mm, 60Hz	M19	54	1027621-LM#0
SL-T5-6606-A90	Viento 10 SDI, 640 x 512, 90 deg HFOV, 4.3mm, 60Hz	M19	55	1027621-LN#0
SL-T5-6626-N10	Viento 10 SDI, 640 x 512, 10 deg HFOV, NO LENS, 60Hz	M34	47	1027621-01#0
SL-T5-6606-N18	Viento 10 SDI, 640 x 512, 18 deg HFOV, NO LENS, 60Hz	M19	42	1027621-03#0
SL-T5-6606-N25	Viento 10 SDI, 640 x 512, 25 deg HFOV, NO LENS, 60Hz	M19	42	1027621-06#0
SL-T5-6616-N40	Viento 10 SDI, 640 x 512, 40 deg HFOV, NO LENS, 60Hz	M24	53	1027621-0H#0
SL-T5-6606-N50	Viento 10 SDI, 640 x 512, 50 deg HFOV, NO LENS, 60Hz	M19	42	1027621-0A#0
SL-T5-6606-N70	Viento 10 SDI, 640 x 512, 70 deg HFOV, NO LENS, 60Hz	M19	42	1027621-0M#0
SL-T5-6606-N90	Viento 10 SDI, 640 x 512, 90 deg HFOV, NO LENS, 60Hz	M19	42	1027621-0N#0

Product Export Classification Control Number(ECCN): 6A003.b.4.b  This document does not contain export-controlled technology.	UNLESS OTHERWISE SPECIFIED DIM ARE IN MILLIMETERS		<b>PROPRIETARY AND CONFIDENTIAL</b> THE INFORMATION CONTAINED IN THIS DRAWING IS THE SOLE PROPERTY OF SIERRA OLYMPIA TECHNOLOGIES, INC. ANY REPRODUCTION IN PART OR AS A WHOLE WITHOUT THE WRITTEN PERMISSION OF SIERRA OLYMPIA TECHNOLOGIES, INC. IS PROHIBITED.  MATERIAL: N/A  FINISH: N/A  CAD CONTROLLED PART. THE NOMINAL PART GEOMETRY IS CONTROLLED BY THE 3D CAD PART FILE.	 <b>SIERRA-OLYMPIA TECHNOLOGIES INC.</b> DESCRIPTION: Mechanical ICD, Viento 10 SDI
	X ± 2.5 mm	ANGLES		
	X.X ± 0.3 mm	X ± 1°		
	X.XX ± 0.13 mm	X.X ± 0.5°		
THIRD ANGLE PROJECTION				
				
DO NOT SCALE DRAWING				SIZE: <b>B</b> DRAWN BY: M. SCOTT SHEET 5 OF 5 DRAWING NUMBER: 20-70056 Rev. A

4

3

2

1