

4

3

2

1

NOTES:

1. REFER TO DRS MECHANICAL ICD, 1036965 TENUM 1280 MECHANICAL ICD, FOR DETAILED SENSOR CORE DIMENSIONS AND MOUNTING INFO
2. ESTIMATED POWER DRAW IS 2.0W STEADY-STATE. CONDUCTIVE OR CONVECTIVE THERMAL DISSIPATION IS RECOMMENDED.
3. SEE SHEET TABLE 1 FOR CONFIGURATIONS, LENS POSITION RELATIVE TO CAMERA BODY WILL VARY WITH FOCUS.
4. FOR ADDITIONAL CONNECTOR INFORMATION REFERENCE ELECTRICAL ICD DOC S-D11285
5. J3 GENLOCK SOTI APPLICATION NOTE 50-90001 FOR COMMAND MODES, SIGNAL LEVELS, AND TIMING
6. OUTSIDE BOARD DIMENSION AND HOLE LOCATION TOLERANCE: +/- 0.127 MM
7. APPROX MASS: SOTI USB BOARDS AND HARDWARE 7g
8. APPROX MASS: SOTI TRIPOD MOUNT AND HARDWARE 10g

37.1

1

A

3

TOP

FRONT

REVISIONS					
ZONE	REV	DESCRIPTION	ECO	DATE	ENGINEER
	A	INITIAL RELEASE	1754	2024-06-12	D. KAMINSKI

BULKHEAD LOCK RING

USB BOARD STACK

LENS MOUNT

SENSOR ASSEMBLY

9.1

4.2

1.56

1.53

4.0 MATED HEIGHT

RIGHT

Product Export Classification Control Number(ECCN):
30Hz: 6A003.b.4.b
9Hz: 6A993

This document does not contain export-controlled technology.

UNLESS OTHERWISE SPECIFIED DIM ARE IN MILLIMETERS

X ± 2.5 mm	ANGLES
X.X ± 0.3 mm	X ± 1°
X.XX ± 0.13 mm	X.X ± 0.5°

THIRD ANGLE PROJECTION

DO NOT SCALE DRAWING

PROPRIETARY AND CONFIDENTIAL
THE INFORMATION CONTAINED IN THIS DRAWING IS THE SOLE PROPERTY OF SIERRA OLYMPIA TECHNOLOGIES, INC. ANY REPRODUCTION IN PART OR AS A WHOLE WITHOUT THE WRITTEN PERMISSION OF SIERRA OLYMPIA TECHNOLOGIES, INC. IS PROHIBITED.

MATERIAL:
N/A

FINISH:
N/A

CAD CONTROLLED PART. THE NOMINAL PART GEOMETRY IS CONTROLLED BY THE 3D CAD PART FILE.

SIERRA-OLYMPIA
TECHNOLOGIES INC.

DESCRIPTION:
Mechanical ICD, Viento HD10 USB

SIZE: **B** DRAWN BY:
D. KAMINSKI

DRAWING NUMBER:
20-70057

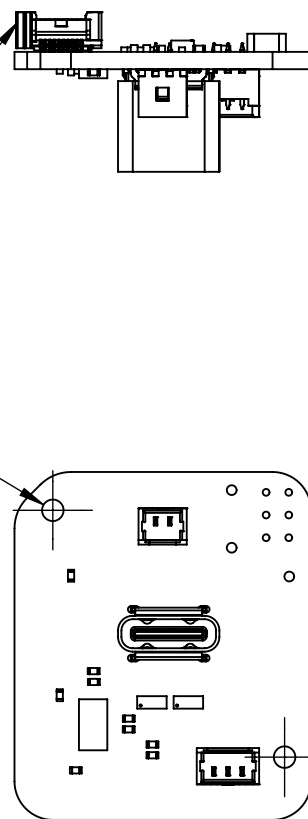
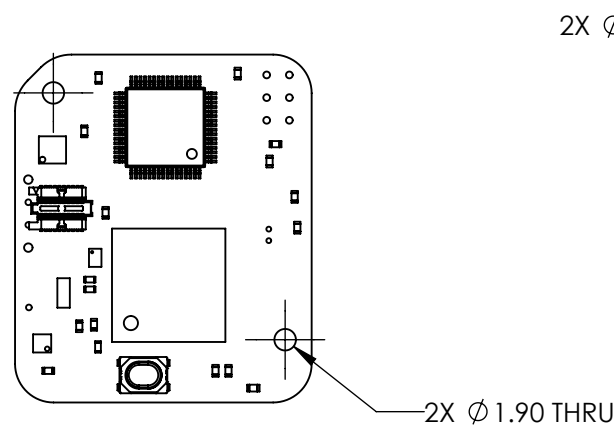
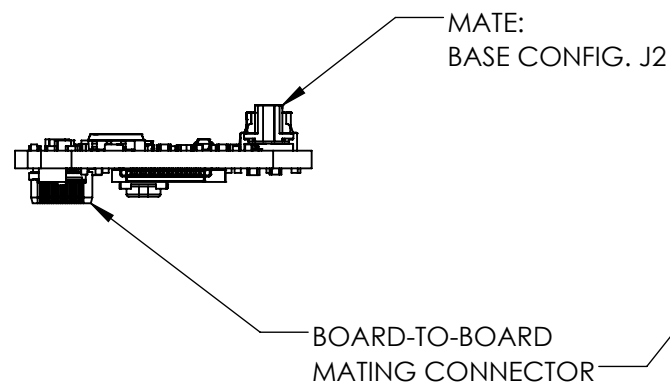
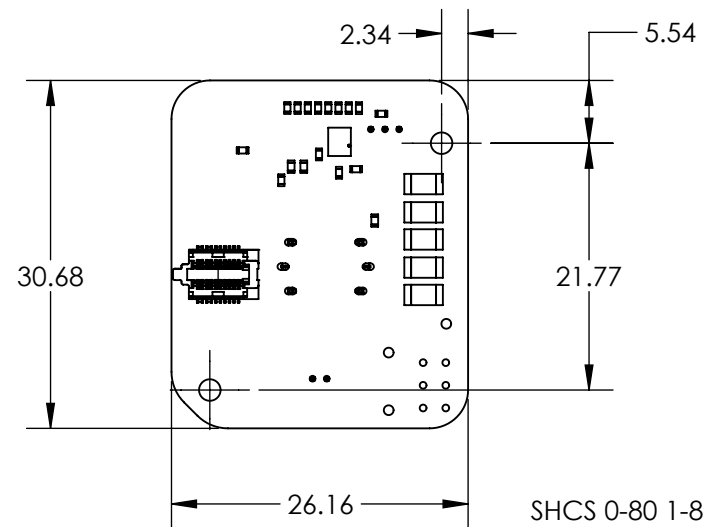
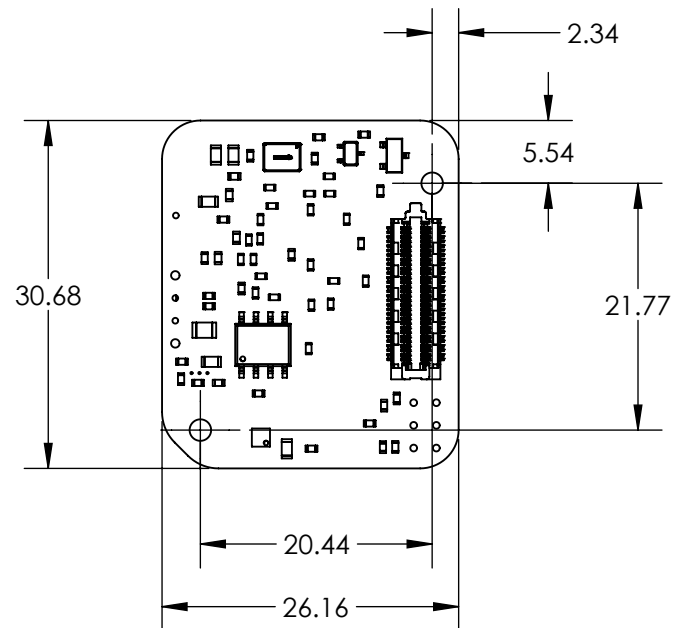
SHEET 1 OF 3
Rev. A

4

3

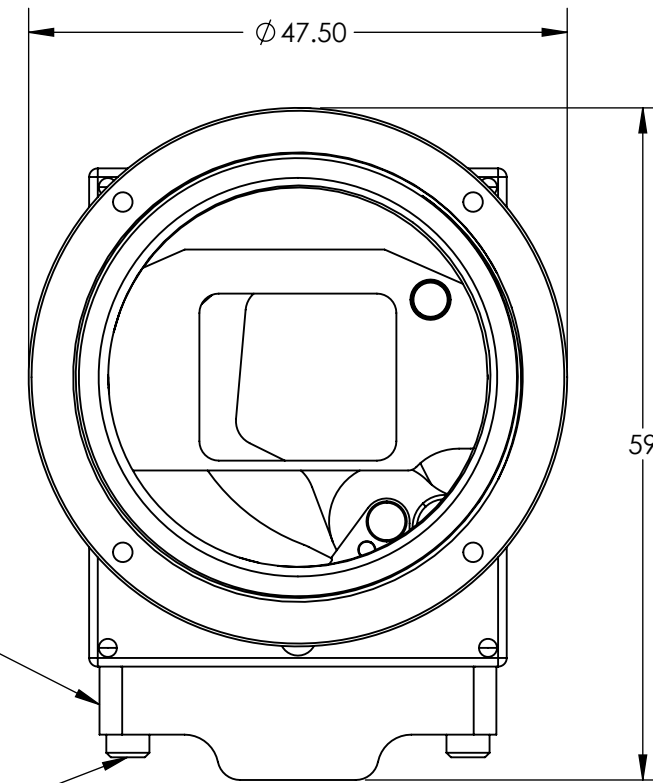
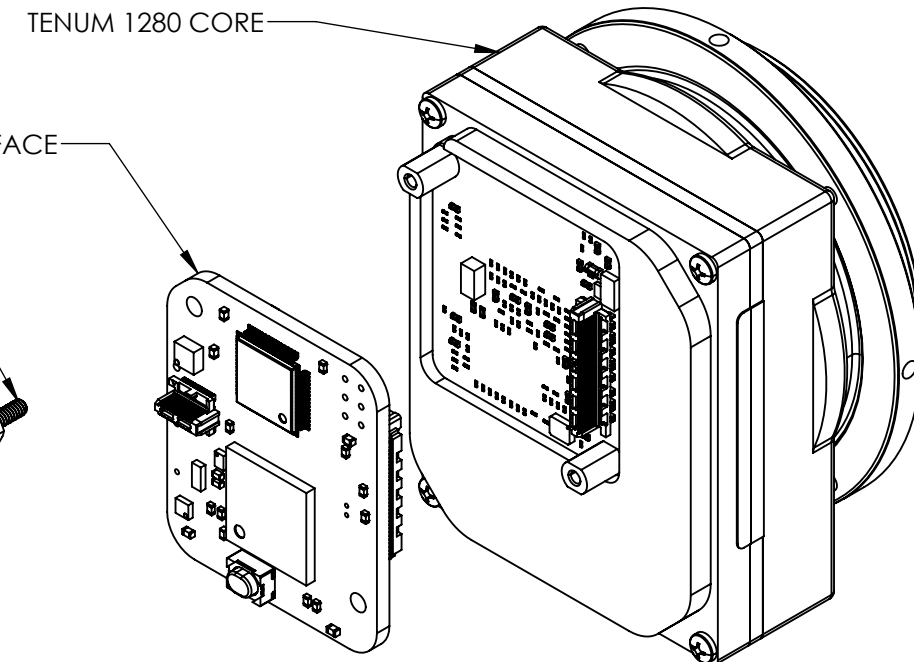
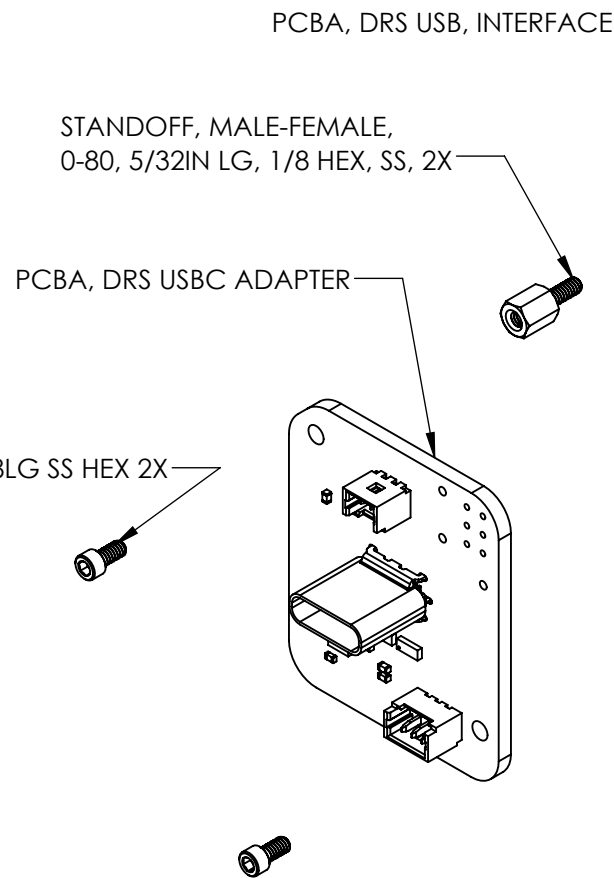
2

1



PCBA, DRS USB Interface

PCBA, DRS USBC Adapter



REMOVABLE TRIPOD MOUNT

TO REMOVE TRIPOD MOUNT
UNSCREW 2 CAPTIVE SCREWS
1.5MM HEX DRIVE SIZE

Product Export Classification
Control Number(ECCN):
30Hz: 6A003.b.4.b
9Hz: 6A993

This document does not
contain export-controlled
technology.

UNLESS OTHERWISE SPECIFIED DIM ARE IN MILLIMETERS	
X ± 2.5 mm	ANGLES
X.X ± 0.3 mm	X ± 1°
X.XX ± 0.13 mm	X.X ± 0.5°
THIRD ANGLE PROJECTION	
DO NOT SCALE DRAWING	

PROPRIETARY AND CONFIDENTIAL
THE INFORMATION CONTAINED IN THIS DRAWING IS THE SOLE
PROPERTY OF SIERRA OLYMPIA TECHNOLOGIES, INC. ANY
REPRODUCTION IN PART OR AS A WHOLE WITHOUT THE WRITTEN
PERMISSION OF SIERRA OLYMPIA TECHNOLOGIES, INC. IS PROHIBITED.

MATERIAL: N/A

FINISH: N/A

CAD CONTROLLED PART. THE NOMINAL PART GEOMETRY IS CONTROLLED BY
THE 3D CAD PART FILE.



DESCRIPTION: Mechanical ICD, Viento HD10 USB	
SIZE B	DRAWN BY: D. KAMINSKI
DRAWING NUMBER: 20-70057	SHEET 2 OF 3 Rev. A

4


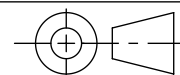
3

2

1

TABLE 1

PART NUMBER	DESCRIPTION	TOTAL MASS, INCLUDING BOARDS (g) NO TRIPOD MOUNT	SEE DRS ICD FOR LENS DIMENSIONS
SL-D5-1324-N21	Viento HD10 USB 1280, 21 deg HFOV, No Lens, M34, 30Hz	69	1026792-000
SL-D5-1324-N30	Viento HD10 USB 1280, 30 deg HFOV, No Lens, M34, 30Hz	69	1026792-010
SL-D5-1324-N60	Viento HD10 USB 1280, 60 deg HFOV, No Lens, M34, 30Hz	69	1026792-020
SL-D5-1324-A21	Viento HD10 USB 1280, 21 deg HFOV, 35mm, M34, 30Hz	144	1026792-L00
SL-D5-1324-A30	Viento HD10 USB 1280, 30 deg HFOV, 25mm, M34, 30Hz	126	1026792-L10
SL-D5-1324-A60	Viento HD10 USB 1280, 60 deg HFOV, 12.8mm, M34, 30Hz	148	1026762-L20
SL-D5-1924-N21	Viento HD10 USB 1280, 21 deg HFOV, No Lens, M34, 9Hz	69	1026792-000
SL-D5-1924-N30	Viento HD10 USB 1280, 30 deg HFOV, No Lens, M34, 9Hz	69	1026792-010
SL-D5-1924-N60	Viento HD10 USB 1280, 60 deg HFOV, No Lens, M34, 9Hz	69	1026792-020
SL-D5-1924-A21	Viento HD10 USB 1280, 21 deg HFOV, 35mm, M34, 9Hz	144	1026792-L00
SL-D5-1924-A30	Viento HD10 USB 1280, 30 deg HFOV, 25mm, M34, 9Hz	126	1026792-L10
SL-D5-1924-A60	Viento HD10 USB 1280, 60 deg HFOV, 12.8mm, M34, 9Hz	148	1026762-L20

Product Export Classification Control Number(ECCN): 30Hz: 6A003.b.4.b 9Hz: 6A993 This document does not contain export-controlled technology.	UNLESS OTHERWISE SPECIFIED DIM ARE IN MILLIMETERS		PROPRIETARY AND CONFIDENTIAL THE INFORMATION CONTAINED IN THIS DRAWING IS THE SOLE PROPERTY OF SIERRA OLYMPIA TECHNOLOGIES, INC. ANY REPRODUCTION IN PART OR AS A WHOLE WITHOUT THE WRITTEN PERMISSION OF SIERRA OLYMPIA TECHNOLOGIES, INC. IS PROHIBITED.	 SIERRA-OLYMPIA TECHNOLOGIES INC.	
	X ± 2.5 mm X.X ± 0.3 mm X.XX ± 0.13 mm	ANGLES X ± 1° X.X ± 0.5°			MATERIAL: N/A
	THIRD ANGLE PROJECTION				FINISH: N/A
					CAD CONTROLLED PART. THE NOMINAL PART GEOMETRY IS CONTROLLED BY THE 3D CAD PART FILE.
DO NOT SCALE DRAWING			DESCRIPTION: Mehcnical ICD, Viento HD10 USB	SIZE: B DRAWN BY: D. KAMINSKI DRAWING NUMBER: 20-70057	
				SHEET 3 OF 3 Rev. A	

4

3

2

1