

4

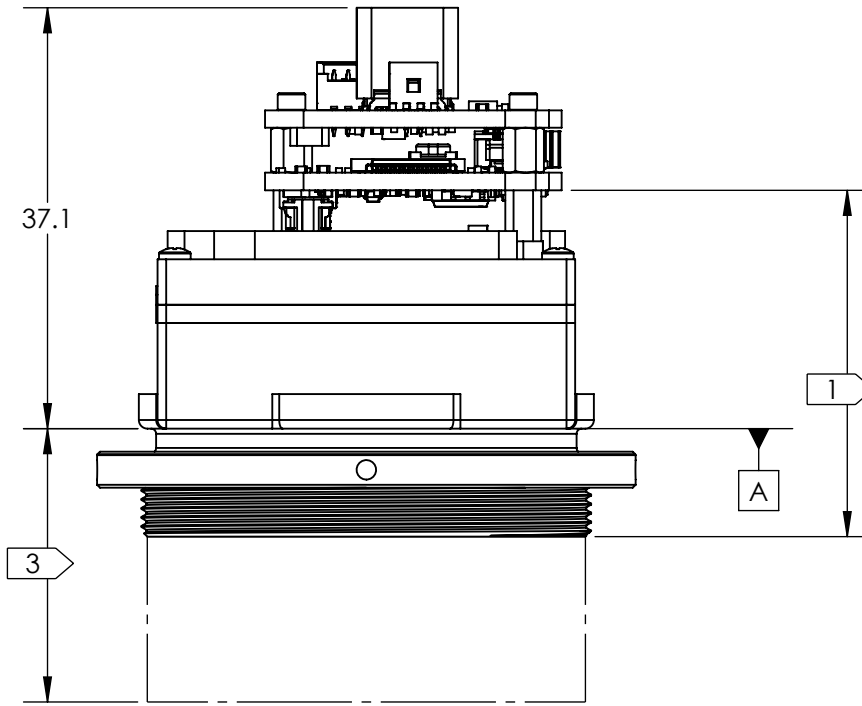
3

2

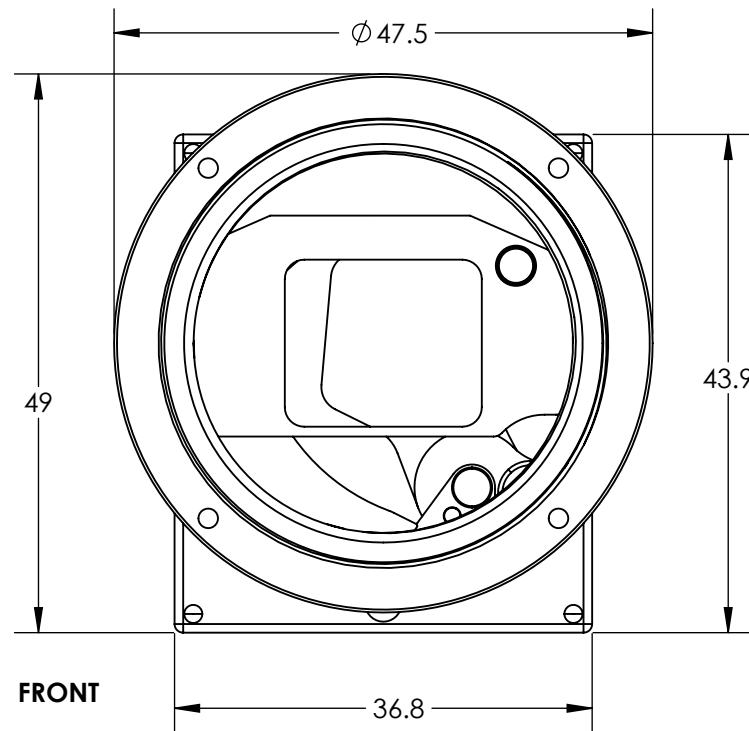
1

NOTES:

- 1. REFER TO DRS MECHANICAL ICD, 1036965 TENUM 1280 MECHANICAL ICD, FOR DETAILED SENSOR CORE DIMENSIONS AND MOUNTING INFO
- 2. ESTIMATED POWER DRAW IS 2.0W STEADY-STATE. CONDUCTIVE OR CONVECTIVE THERMAL DISSIPATION IS RECOMMENDED.
- 3. SEE SHEET 3, TABLE 1 FOR CONFIGURATIONS, LENS POSITION RELATIVE TO CAMERA BODY WILL VARY WITH FOCUS. REFER TO DRS MECHANICAL ICD, 1036965 TENUM1280 MECHANICAL ICD FOR LENS DIMENSIONS
- 4. FOR ADDITIONAL CONNECTOR INFORMATION REFERENCE ELECTRICAL ICD DOC S-D11285
- 5. J3 GENLOCK SOTI APPLICATION NOTE 50-90001 FOR COMMAND MODES, SIGNAL LEVELS, AND TIMING
- 6. OUTSIDE BOARD DIMENSION AND HOLE LOCATION TOLERANCE: +/- 0.127 MM
- 7. APPROX MASS: SOTI USB BOARDS AND HARDWARE 7g
- 8. APPROX MASS: SOTI TRIPOD MOUNT 10g

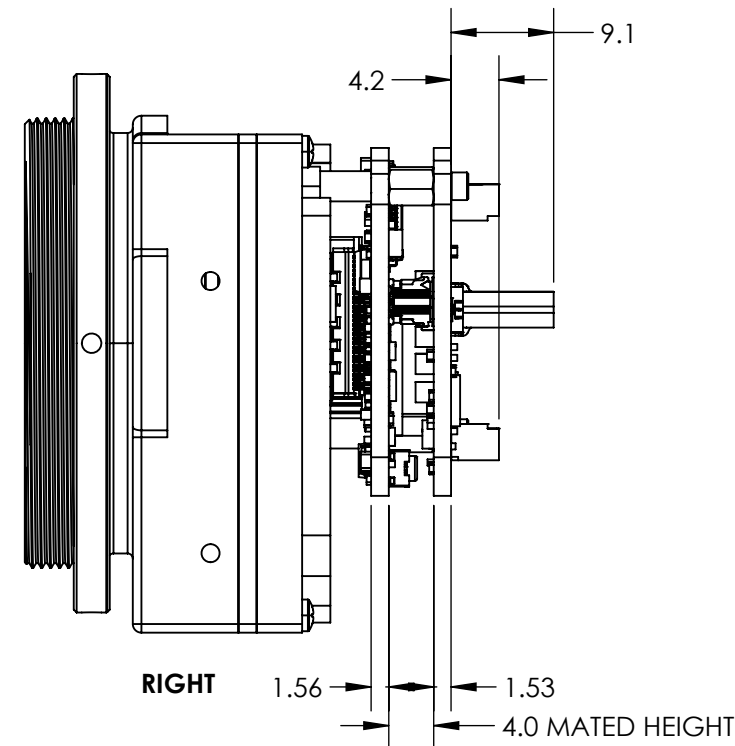
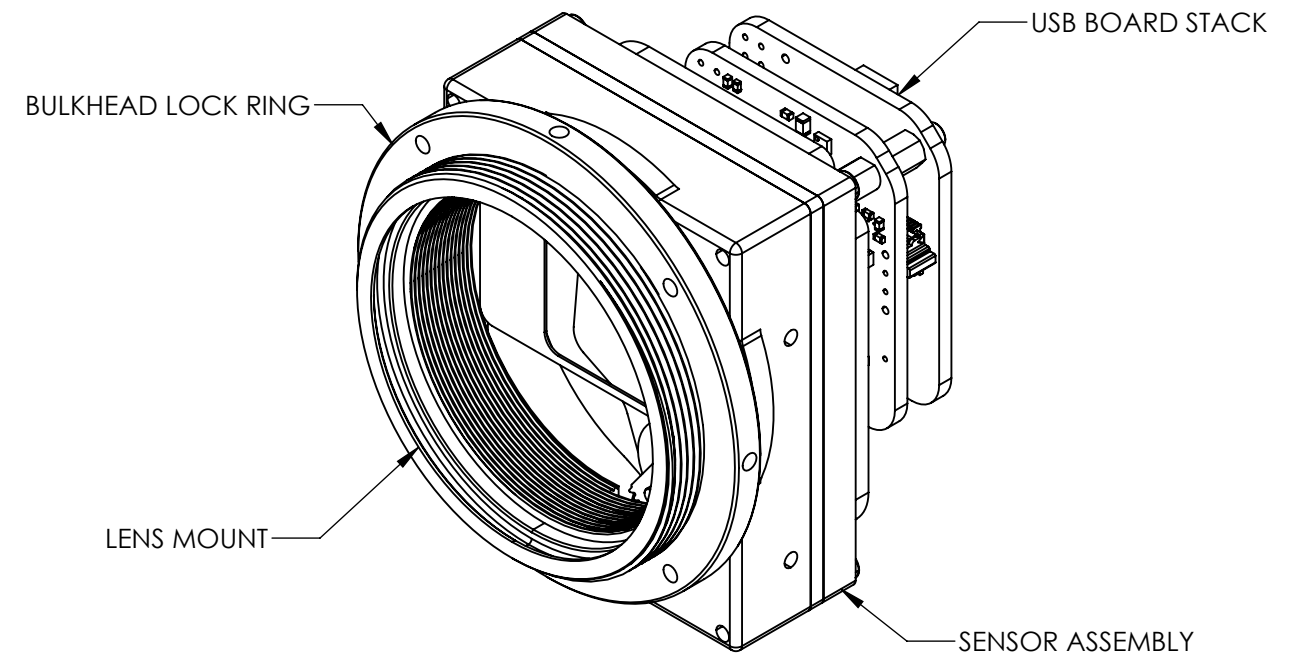


TOP



FRONT

REVISIONS					
ZONE	REV.	DESCRIPTION	ECO	DATE	ENGINEER
	A	INITIAL RELEASE	1754	2024-06-24	D. KAMINSKI
	B	UPDATE TRIPOD MOUNT NOTES	1778	2024-07-24	D. KAMINSKI



RIGHT

OPTIONAL TRIPOD MOUNT
PN 80-20163

TO INSTALL TRIPOD MOUNT
SCREW IN THE 2 CAPTIVE SCREWS
WITH 1.5MM HEX DRIVE SIZE

Product Export Classification
Control Number(ECCN):
30Hz: 6A003.b.4.b
9Hz: 6A993

This document does not
contain export-controlled
technology.

UNLESS OTHERWISE SPECIFIED
DIM ARE IN MILLIMETERS

X ± 2.5 mm	ANGLES
X.X ± 0.3 mm	X ± 1°
X.XX ± 0.13 mm	X.X ± 0.5°

THIRD ANGLE PROJECTION

DO NOT SCALE DRAWING

PROPRIETARY AND CONFIDENTIAL
THE INFORMATION CONTAINED IN THIS DRAWING IS THE SOLE
PROPERTY OF SIERRA OLYMPIA TECHNOLOGIES, INC. ANY
REPRODUCTION IN PART OR AS A WHOLE WITHOUT THE WRITTEN
PERMISSION OF SIERRA OLYMPIA TECHNOLOGIES, INC. IS PROHIBITED.

MATERIAL: N/A

FINISH: N/A

CAD CONTROLLED PART. THE NOMINAL PART GEOMETRY IS CONTROLLED BY
THE 3D CAD PART FILE.



DESCRIPTION:
Mechanical ICD, Viento HD10 USB

SIZE: **B** DRAWN BY: D. KAMINSKI SHEET 1 OF 3

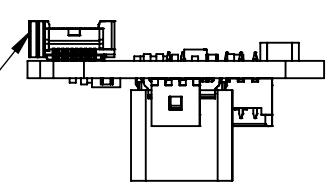
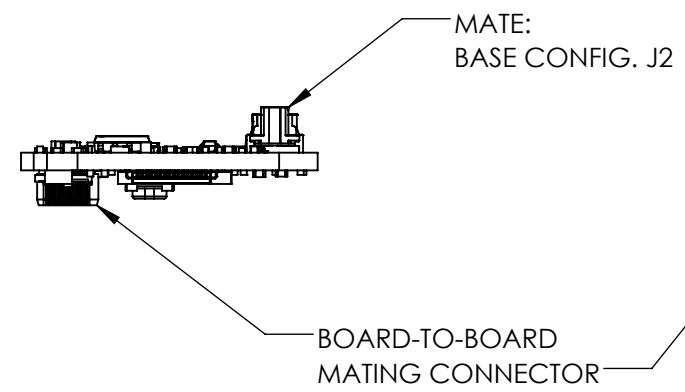
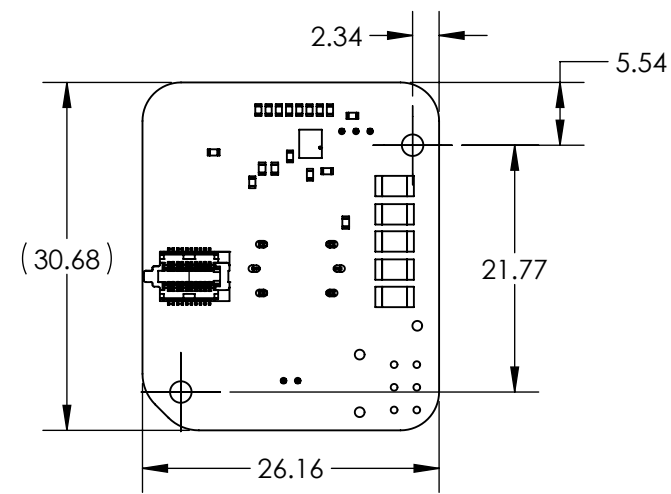
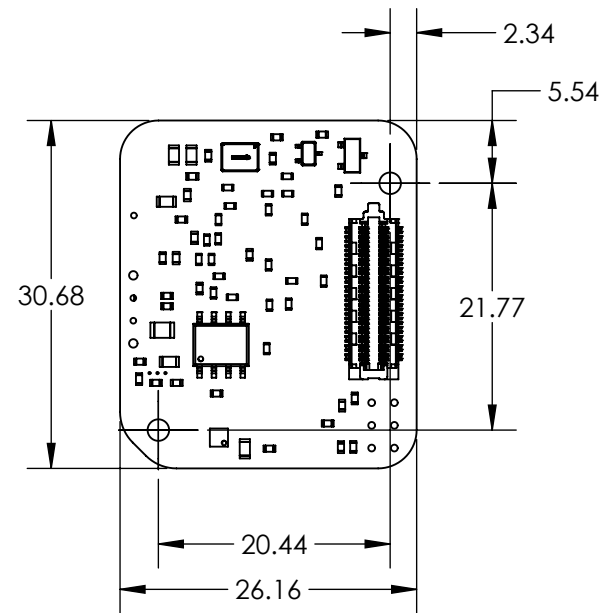
DRAWING NUMBER: 20-70057 Rev. B

4

3

2

1



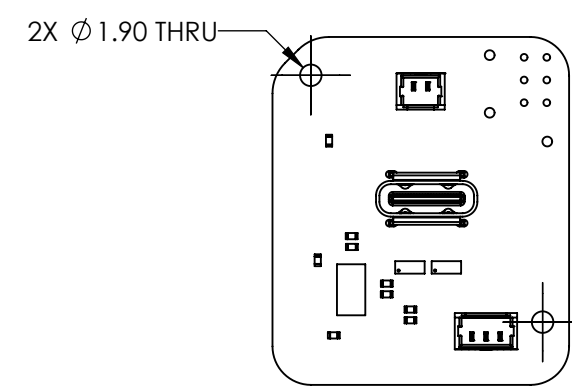
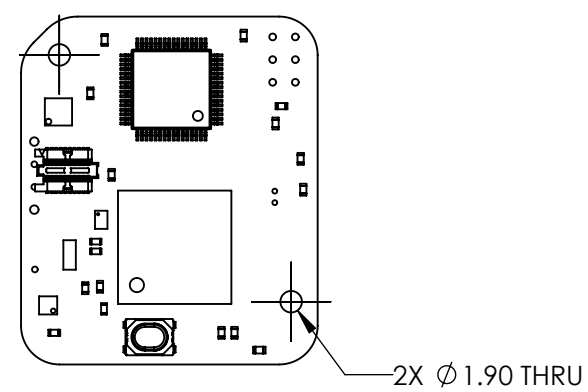
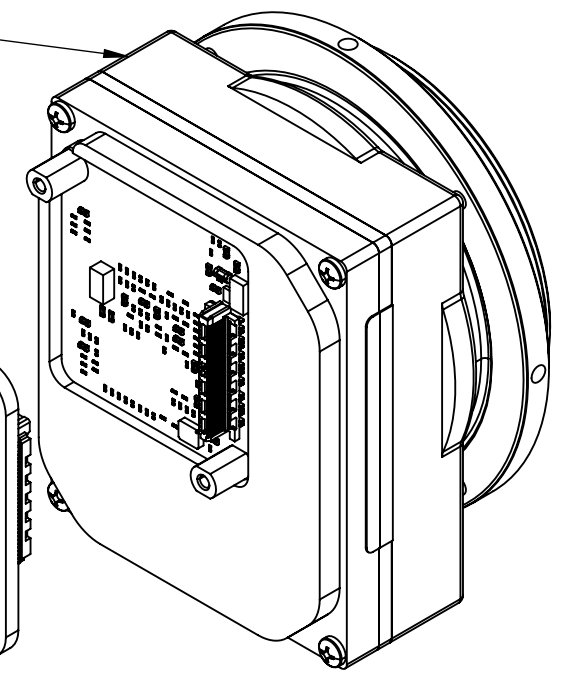
SHCS 0-80 1-8LG SS HEX 2X

PCBA, DRS USB, INTERFACE

STANDOFF, MALE-FEMALE, 0-80, 5/32IN LG, 1/8 HEX, SS, 2X

PCBA, DRS USBC ADAPTER

SENSOR CORE



PCBA, DRS USB Interface
APPROX MASS 4g

PCBA, DRS USBC Adapter
APPROX MASS 3g

Product Export Classification
Control Number(ECCN):
30Hz: 6A003.b.4.b
9Hz: 6A993

This document does not
contain export-controlled
technology.

UNLESS OTHERWISE SPECIFIED DIM ARE IN MILLIMETERS	
X ± 2.5 mm	ANGLES
X.X ± 0.3 mm	X ± 1°
X.XX ± 0.13 mm	X.X ± 0.5°
THIRD ANGLE PROJECTION	
DO NOT SCALE DRAWING	

PROPRIETARY AND CONFIDENTIAL
THE INFORMATION CONTAINED IN THIS DRAWING IS THE SOLE
PROPERTY OF SIERRA OLYMPIA TECHNOLOGIES, INC. ANY
REPRODUCTION IN PART OR AS A WHOLE WITHOUT THE WRITTEN
PERMISSION OF SIERRA OLYMPIA TECHNOLOGIES, INC. IS PROHIBITED.

MATERIAL: N/A

FINISH: N/A

CAD CONTROLLED PART. THE NOMINAL PART GEOMETRY IS CONTROLLED BY
THE 3D CAD PART FILE.

		DESCRIPTION:	
		Mechanical ICD, Viento HD10 USB	
SIZE	DRAWN BY:	SHEET 2 OF 3	
B	D. KAMINSKI		
DRAWING NUMBER:		20-70057	Rev. B

4

3

2

1

TABLE 1

PART NUMBER	DESCRIPTION	TOTAL MASS, INCLUDING BOARDS (g) NO TRIPOD MOUNT	SEE DRS ICD FOR LENS DIMENSIONS
SL-D5-1324-N21	Viento HD10 USB 1280, 21 deg HFOV, No Lens, M34, 30Hz	69	1026792-000
SL-D5-1324-N30	Viento HD10 USB 1280, 30 deg HFOV, No Lens, M34, 30Hz	69	1026792-010
SL-D5-1324-N60	Viento HD10 USB 1280, 60 deg HFOV, No Lens, M34, 30Hz	69	1026792-020
SL-D5-1324-A21	Viento HD10 USB 1280, 21 deg HFOV, 35mm, M34, 30Hz	144	1026792-L00
SL-D5-1324-A30	Viento HD10 USB 1280, 30 deg HFOV, 25mm, M34, 30Hz	126	1026792-L10
SL-D5-1324-A60	Viento HD10 USB 1280, 60 deg HFOV, 12.8mm, M34, 30Hz	148	1026792-L20
SL-D5-1924-N21	Viento HD10 USB 1280, 21 deg HFOV, No Lens, M34, 9Hz	69	1026792-000
SL-D5-1924-N30	Viento HD10 USB 1280, 30 deg HFOV, No Lens, M34, 9Hz	69	1026792-010
SL-D5-1924-N60	Viento HD10 USB 1280, 60 deg HFOV, No Lens, M34, 9Hz	69	1026792-020
SL-D5-1924-A21	Viento HD10 USB 1280, 21 deg HFOV, 35mm, M34, 9Hz	144	1026792-L00
SL-D5-1924-A30	Viento HD10 USB 1280, 30 deg HFOV, 25mm, M34, 9Hz	126	1026792-L10
SL-D5-1924-A60	Viento HD10 USB 1280, 60 deg HFOV, 12.8mm, M34, 9Hz	148	1026792-L20

C


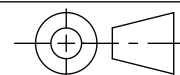
C

B

B

A

A

Product Export Classification Control Number(ECCN): 30Hz: 6A003.b.4.b 9Hz: 6A993 This document does not contain export-controlled technology.	UNLESS OTHERWISE SPECIFIED DIM ARE IN MILLIMETERS		PROPRIETARY AND CONFIDENTIAL THE INFORMATION CONTAINED IN THIS DRAWING IS THE SOLE PROPERTY OF SIERRA OLYMPIA TECHNOLOGIES, INC. ANY REPRODUCTION IN PART OR AS A WHOLE WITHOUT THE WRITTEN PERMISSION OF SIERRA OLYMPIA TECHNOLOGIES, INC. IS PROHIBITED.	 SIERRA-OLYMPIA TECHNOLOGIES INC.			
	X ± 2.5 mm X.X ± 0.3 mm X.XX ± 0.13 mm	ANGLES X ± 1° X.X ± 0.5°				MATERIAL: N/A	DESCRIPTION: Mehcnical ICD, Viento HD10 USB
	THIRD ANGLE PROJECTION 			FINISH: N/A	SIZE B	DRAWN BY: D. KAMINSKI	SHEET 3 OF 3
	DO NOT SCALE DRAWING			CAD CONTROLLED PART. THE NOMINAL PART GEOMETRY IS CONTROLLED BY THE 3D CAD PART FILE.	DRAWING NUMBER: 20-70057	Rev. B	

4

3

2

1