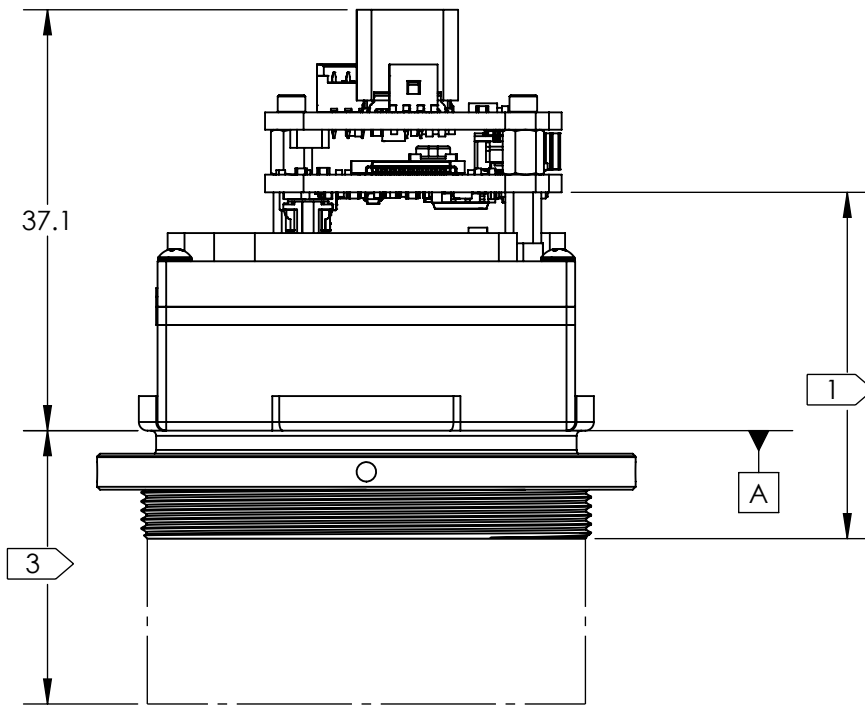
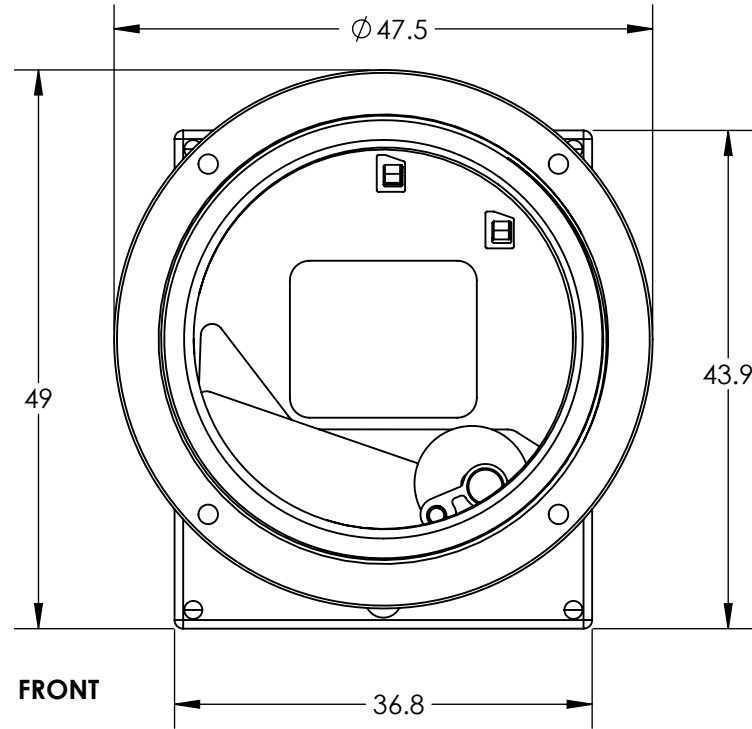


NOTES:

- 1. REFER TO DRS MECHANICAL ICD, 1036965 TENUM 1280 MECHANICAL ICD, FOR DETAILED SENSOR CORE DIMENSIONS AND MOUNTING INFO
- 2. ESTIMATED POWER DRAW IS 2.5W STEADY-STATE. CONDUCTIVE OR CONVECTIVE THERMAL DISSIPATION IS RECOMMENDED.
- 3. SEE SHEET 3, TABLE 1 FOR CONFIGURATIONS, LENS POSITION RELATIVE TO CAMERA BODY WILL VARY WITH FOCUS. REFER TO DRS MECHANICAL ICD, 1036965 TENUM1280 MECHANICAL ICD FOR LENS DIMENSIONS
- 4. FOR ADDITIONAL CONNECTOR INFORMATION REFERENCE ELECTRICAL ICD DOC S-D11285
- 5. J3 GENLOCK SOTI APPLICATION NOTE 50-90001 FOR COMMAND MODES, SIGNAL LEVELS, AND TIMING
- 6. OUTSIDE BOARD DIMENSION AND HOLE LOCATION TOLERANCE: +/- 0.127 MM
- 7. APPROX MASS: SOTI USB BOARDS AND HARDWARE 7g
- 8. APPROX MASS: SOTI TRIPOD MOUNT 10g

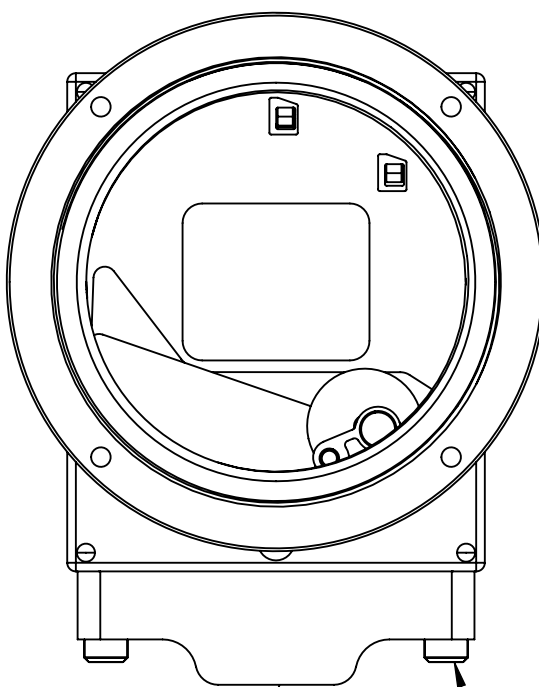


TOP



FRONT

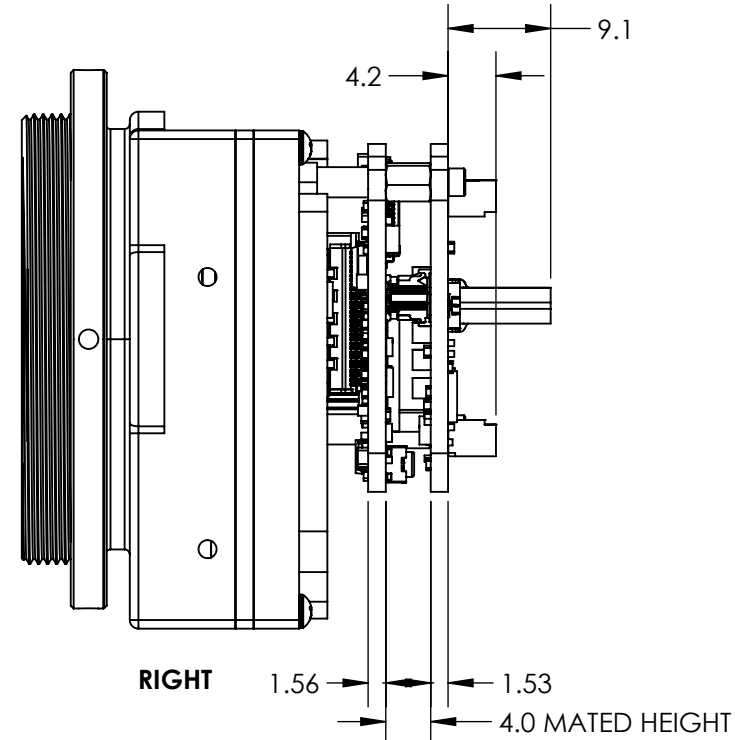
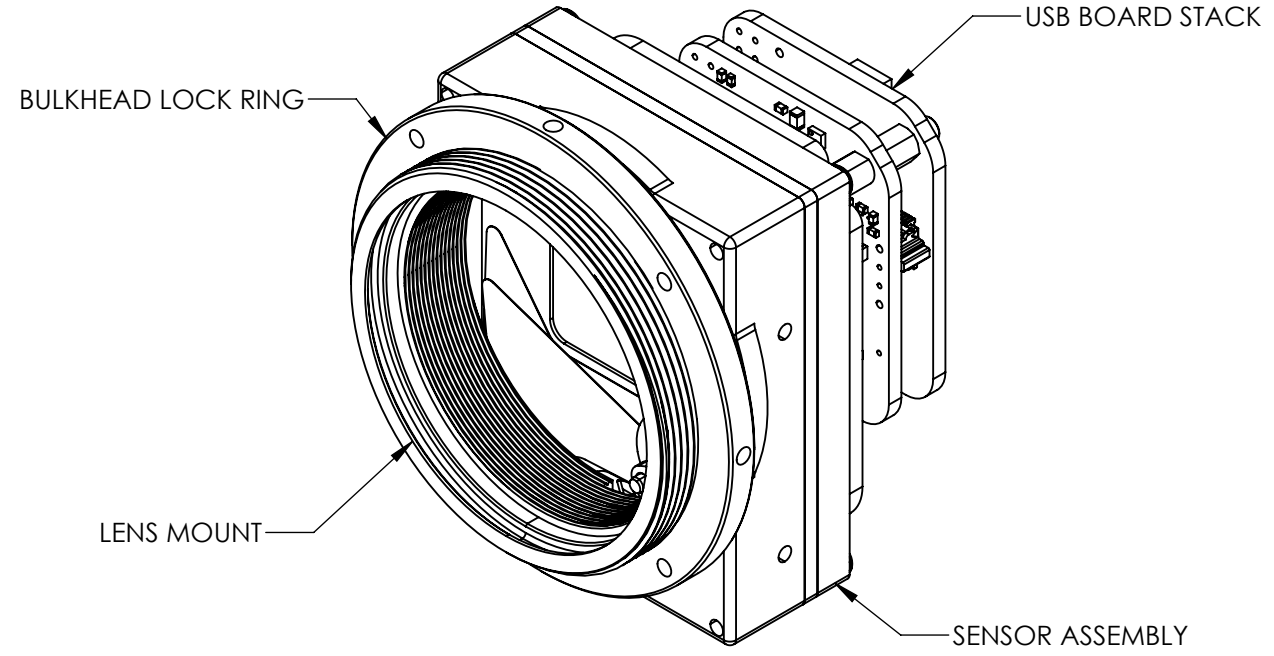
RIGHT



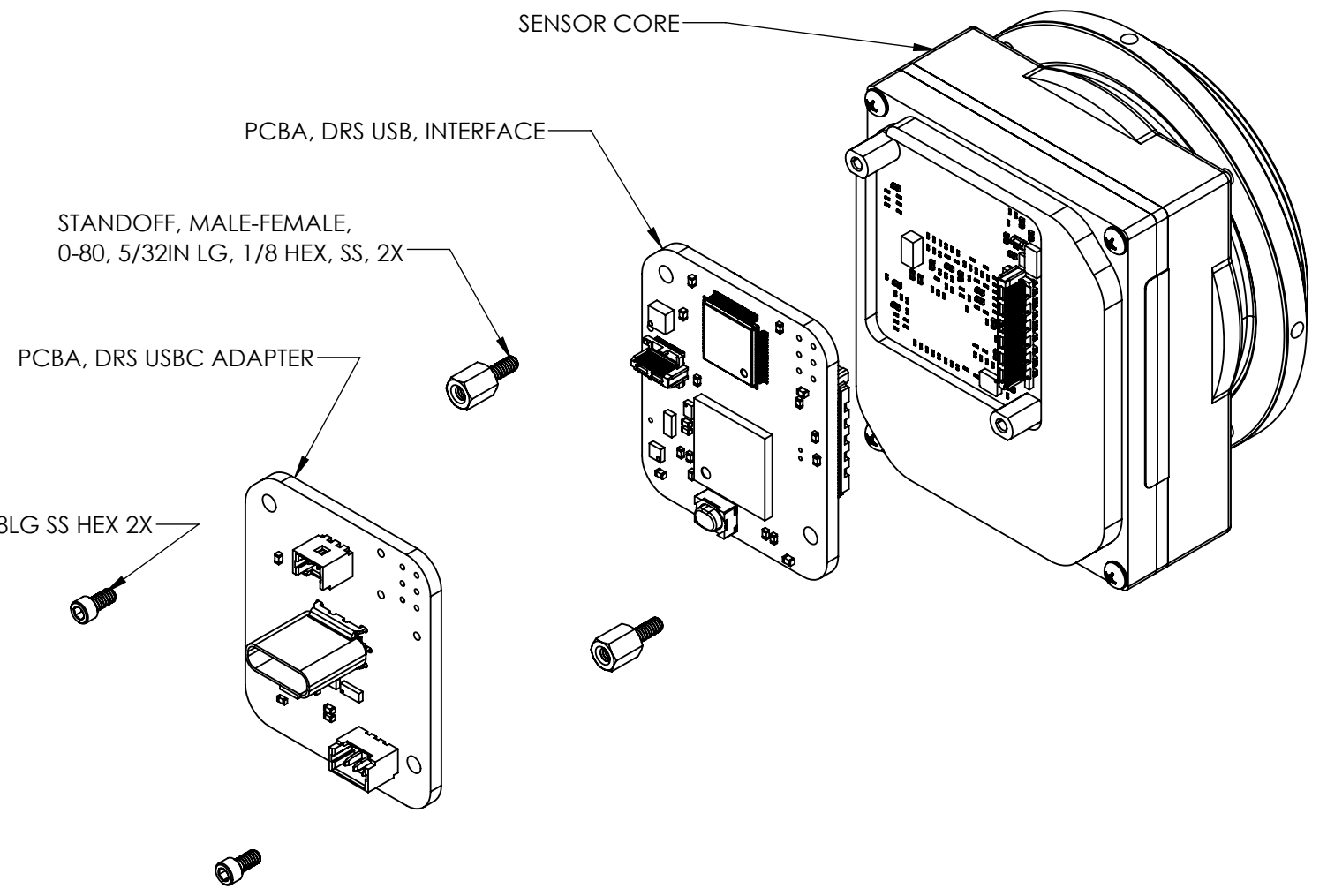
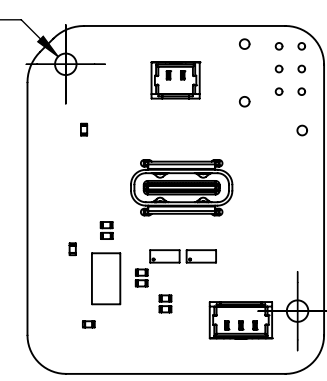
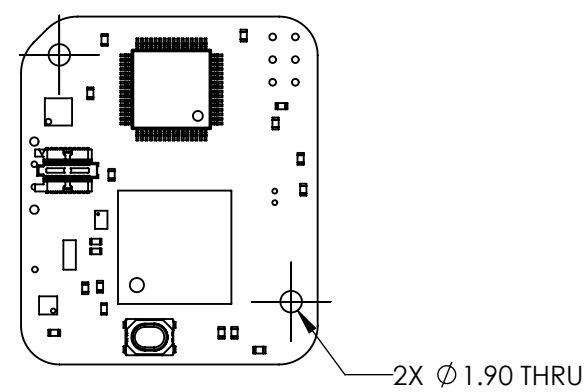
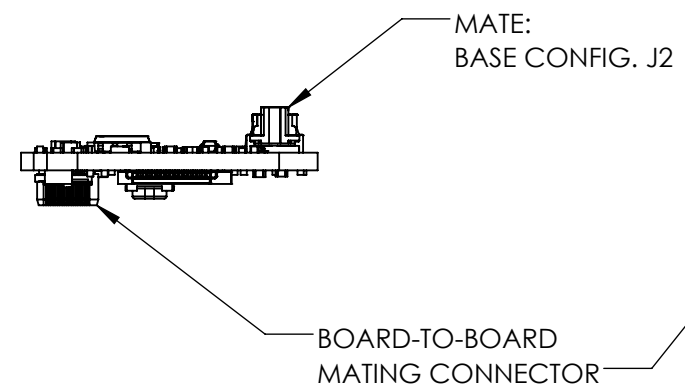
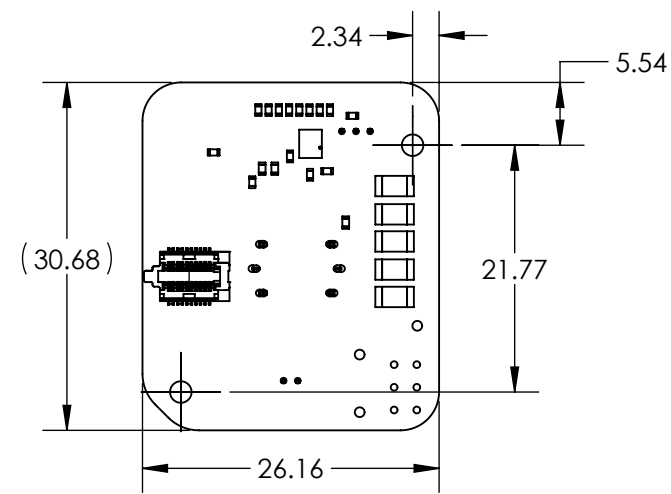
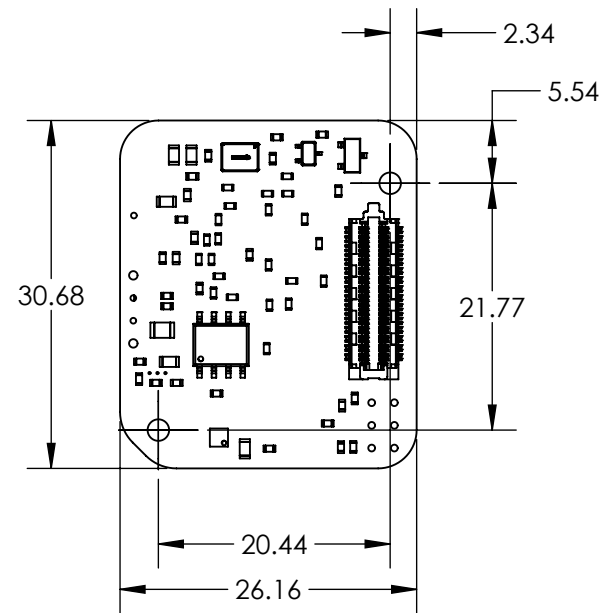
OPTIONAL TRIPOD MOUNT PN 80-20163

TO INSTALL TRIPOD MOUNT SCREW IN THE 2 CAPTIVE SCREWS WITH 1.5MM HEX DRIVE SIZE

REVISIONS					
ZONE	REV.	DESCRIPTION	ECO	DATE	ENGINEER
	B	UPDATE TRIPOD MOUNT NOTES	1778	2024-07-24	D. KAMINSKI
	C	ADD LENS DETAILS TO TABLE 1	1804	2024-12-19	D. KAMINSKI
	D	ECO 1893 - UPDATED NOTE 2 FROM 2.0W TO 2.5W, ECO 1911 - ADDED 20DEG HFOV LENS OPTIONS TO TABLE 1	1893, 1911	2026-03-13	C. PRICE



Product Export Classification Control Number(ECCN): 30Hz: 6A003.b.4.b 9Hz: 6A993 This document does not contain export-controlled technology.	UNLESS OTHERWISE SPECIFIED DIM ARE IN MILLIMETERS		PROPRIETARY AND CONFIDENTIAL THE INFORMATION CONTAINED IN THIS DRAWING IS THE SOLE PROPERTY OF SIERRA OLYMPIA TECHNOLOGIES, INC. ANY REPRODUCTION IN PART OR AS A WHOLE WITHOUT THE WRITTEN PERMISSION OF SIERRA OLYMPIA TECHNOLOGIES, INC. IS PROHIBITED. MATERIAL: N/A FINISH: N/A CAD CONTROLLED PART. THE NOMINAL PART GEOMETRY IS CONTROLLED BY THE 3D CAD PART FILE.	SIERRA-OLYMPIA TECHNOLOGIES INC. DESCRIPTION: Mechanical ICD, Viento HD10 USB			
	X ± 2.5 mm	ANGLES X ± 1°					
	X.X ± 0.3 mm	X.X ± 0.5°		THIRD ANGLE PROJECTION	SIZE B	DRAWN BY: D. KAMINSKI	SHEET 1 OF 3
	X.XX ± 0.13 mm				DRAWING NUMBER: 20-70057	Rev. D	



PCBA, DRS USB Interface
APPROX MASS 4g

PCBA, DRS USBC Adapter
APPROX MASS 3g

Product Export Classification Control Number(ECCN): 30Hz: 6A003.b.4.b 9Hz: 6A993 This document does not contain export-controlled technology.	UNLESS OTHERWISE SPECIFIED DIM ARE IN MILLIMETERS		PROPRIETARY AND CONFIDENTIAL THE INFORMATION CONTAINED IN THIS DRAWING IS THE SOLE PROPERTY OF SIERRA OLYMPIA TECHNOLOGIES, INC. ANY REPRODUCTION IN PART OR AS A WHOLE WITHOUT THE WRITTEN PERMISSION OF SIERRA OLYMPIA TECHNOLOGIES, INC. IS PROHIBITED.		SIERRA-OLYMPIA TECHNOLOGIES INC.
	X ± 2.5 mm X.X ± 0.3 mm X.XX ± 0.13 mm	ANGLES X ± 1° X.X ± 0.5°	MATERIAL: N/A		
	THIRD ANGLE PROJECTION 		FINISH: N/A		SIZE: B DRAWN BY: D. KAMINSKI SHEET 2 OF 3
	DO NOT SCALE DRAWING		CAD CONTROLLED PART. THE NOMINAL PART GEOMETRY IS CONTROLLED BY THE 3D CAD PART FILE.		DRAWING NUMBER: 20-70057 Rev. D

4

3

2

1

TABLE 1

PART NUMBER	DESCRIPTION	TOTAL MASS, INCLUDING BOARDS (g) NO TRIPOD MOUNT	SEE DRS ICD FOR LENS DIMENSIONS	EFL (mm)	F#	H/VFOV	SIZE L x Wx H (mm)
SL-D5-1324-N21	Viento HD10 USB 1280, 21 deg HFOV, No Lens, M34, 30Hz	69	1026792-000	N/A	N/A	N/A	47X48X50
SL-D5-1324-N30	Viento HD10 USB 1280, 30 deg HFOV, No Lens, M34, 30Hz	69	1026792-010	N/A	N/A	N/A	47X48X50
SL-D5-1324-N60	Viento HD10 USB 1280, 60 deg HFOV, No Lens, M34, 30Hz	69	1026792-020	N/A	N/A	N/A	47X48X50
SL-D5-1324-N20	Viento HD10 USB 1280, 20 deg HFOV, No Lens, M34, 30Hz	69	1026792-040	N/A	N/A	N/A	47X48X50
SL-D5-1324-A21	Viento HD10 USB 1280, 21 deg HFOV, 35mm, M34, 30Hz	144	1026792-L00	35	1.4	21° BY 17°	79X48X50
SL-D5-1324-A30	Viento HD10 USB 1280, 30 deg HFOV, 25mm, M34, 30Hz	126	1026792-L10	25	1.2	30° BY 23°	69X48X50
SL-D5-1324-A60	Viento HD10 USB 1280, 60 deg HFOV, 12.8mm, M34, 30Hz	148	1026792-L20	12.8	1.4	60° BY 47°	74X48X50
SL-D5-1324-A20	Viento HD10 USB 1280, 20 deg HFOV, 35mm, M34, 30Hz	171	1026792-L40	35	1.2	20° BY 17°	75X48X50
SL-D5-1924-N21	Viento HD10 USB 1280, 21 deg HFOV, No Lens, M34, 9Hz	69	1026792-000	N/A	N/A	N/A	47X48X50
SL-D5-1924-N30	Viento HD10 USB 1280, 30 deg HFOV, No Lens, M34, 9Hz	69	1026792-010	N/A	N/A	N/A	47X48X50
SL-D5-1924-N60	Viento HD10 USB 1280, 60 deg HFOV, No Lens, M34, 9Hz	69	1026792-020	N/A	N/A	N/A	47X48X50
SL-D5-1924-N20	Viento HD10 USB 1280, 20 deg HFOV, No Lens, M34, 9Hz	69	1026792-040	N/A	N/A	N/A	47X48X50
SL-D5-1924-A21	Viento HD10 USB 1280, 21 deg HFOV, 35mm, M34, 9Hz	144	1026792-L00	35	1.4	21° BY 17°	79X48X50
SL-D5-1924-A30	Viento HD10 USB 1280, 30 deg HFOV, 25mm, M34, 9Hz	126	1026792-L10	25	1.2	30° BY 23°	69X48X50
SL-D5-1924-A60	Viento HD10 USB 1280, 60 deg HFOV, 12.8mm, M34, 9Hz	148	1026792-L20	12.8	1.4	60° BY 47°	74X48X50
SL-D5-1924-A20	Viento HD10 USB 1280, 20 deg HFOV, 35mm, M34, 9Hz	171	1026792-L40	35	1.2	20° BY 17°	75X48X50

C


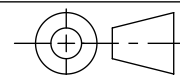
C

B

B

A

A

Product Export Classification Control Number(ECCN): 30Hz: 6A003.b.4.b 9Hz: 6A993 This document does not contain export-controlled technology.	UNLESS OTHERWISE SPECIFIED DIM ARE IN MILLIMETERS		PROPRIETARY AND CONFIDENTIAL THE INFORMATION CONTAINED IN THIS DRAWING IS THE SOLE PROPERTY OF SIERRA OLYMPIA TECHNOLOGIES, INC. ANY REPRODUCTION IN PART OR AS A WHOLE WITHOUT THE WRITTEN PERMISSION OF SIERRA OLYMPIA TECHNOLOGIES, INC. IS PROHIBITED.	 SIERRA-OLYMPIA TECHNOLOGIES INC.	
	X ± 2.5 mm X.X ± 0.3 mm X.XX ± 0.13 mm	ANGLES X ± 1° X.X ± 0.5°			MATERIAL: N/A
	THIRD ANGLE PROJECTION				FINISH: N/A
					CAD CONTROLLED PART. THE NOMINAL PART GEOMETRY IS CONTROLLED BY THE 3D CAD PART FILE.
DO NOT SCALE DRAWING			DESCRIPTION: Mechanical ICD, Viento HD10 USB	SIZE: B DRAWN BY: D. KAMINSKI SHEET 3 OF 3	
			DRAWING NUMBER: 20-70057	Rev. D	

4

3

2

1