

4

3

2

1

NOTES:

1. ESTIMATED POWER DRAW IS 4.6W STEADY-STATE. CONDUCTIVE OR CONVECTIVE THERMAL DISSIPATION IS RECOMMENDED.
2. SEE SHEET 3 FOR CONFIGURATIONS, LENS POSITION RELATIVE TO CAMERA BODY WILL VARY WITH FOCUS. REFER TO DRS MECHANICAL ICD, 1036965 TENUM1280 MECHANICAL ICD FOR LENS DIMENSIONS.
3. J2 GENLOCK  
MOLEX "PICOBLADE" 2-PIN, 1.25MM PITCH  
MATING CONNECTOR HOUSING: MOLEX 0510210200  
CONNECTOR TERMINALS: MOLEX 0500588100 (28-32 AWG)  
SEE SOTI TN 50-90001 FOR COMMAND MODES, SIGNAL LEVELS, AND TIMING
4. FFC JUMPER, SAME SIDE CONTACTS, 40 CIRCUITS, .5MM PITCH, GOLD PLATING, RECOMENDED MOLEX PN 0150200429, MAX LENGTH 8IN
5. REFER TO DRS MECHANICAL ICD, 1036965 TENUM1280 MECHANICAL ICD, FOR DETAILED SENSOR CORE DIMENSIONS AND MOUNTING INFORMATION
6. SCREWS (#2-56, 5-16LG) CAN BE USED FOR MOUNTING
7. APPROX MASS: SOTI SDI BOARDS AND HARDWARE 46g
8. APPROX MASS: SOTI BENCH TOP MOUNT AND HARDWARE 24g

REVISIONS					
ZONE	REV.	DESCRIPTION	ECO	DATE	ENGINEER
	A	INITIAL RELEASE	1754	2024-06-12	D. KAMINSKI
	B	CORRECTED WRONG DRS PART NUMBER	1790	2024-08-16	M. GERALD

3  
Pin  
1 GENLOCK  
2 GND  
RESERVED  
DETAIL A  
SCALE 2 : 1

4 FFC JUMPER  
40.72  
40.39  
39.29  
25.99  
A  
2  
TOP

RESERVED  
SOTI GIGE INTERFACE PCBA  
36.50  
42.16  
SOTI SENSOR INTERFACE PCBA  
J1 FFC  
BACK  
LEFT

GIGABIT ETHERNET (1000bASE-T)  
POWER OVER ETHERNET (POE)PLEORA  
iPORT NTX-GIGE  
EMBEDDED INTERFACE 900-6003

SENSOR CORE  
FRONT

Product Export Classification  
Control Number(ECCN):  
30Hz: 6A003.b.4.b  
9Hz: 6A993This document does not  
contain export-controlled  
technology.UNLESS OTHERWISE SPECIFIED  
DIM ARE IN MILLIMETERS  
X ± 2.5 mm    ANGLES  
X.X ± 0.3 mm    X ± 1°  
X.XX ± 0.13 mm    X.X ± 0.5°

THIRD ANGLE PROJECTION

DO NOT SCALE DRAWING

**PROPRIETARY AND CONFIDENTIAL**  
THE INFORMATION CONTAINED IN THIS DRAWING IS THE SOLE  
PROPERTY OF SIERRA OLYMPIA TECHNOLOGIES, INC. ANY  
REPRODUCTION IN PART OR AS A WHOLE WITHOUT THE WRITTEN  
PERMISSION OF SIERRA OLYMPIA TECHNOLOGIES, INC. IS PROHIBITED.MATERIAL:  
N/AFINISH:  
N/ACAD CONTROLLED PART. THE NOMINAL PART GEOMETRY IS CONTROLLED BY  
THE 3D CAD PART FILE.

**SIERRA-OLYMPIA**  
TECHNOLOGIES INC.

DESCRIPTION:  
ICD, Viento HD10 GigESIZE    DRAWN BY:  
**B**    D. KAMINSKIDRAWING NUMBER:  
20-70058

SHEET 1 OF 3

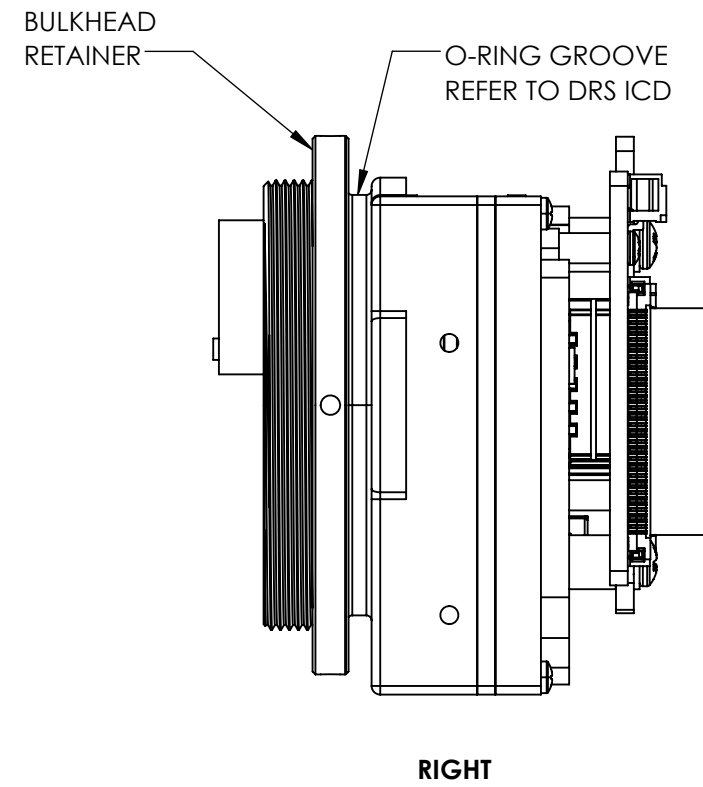
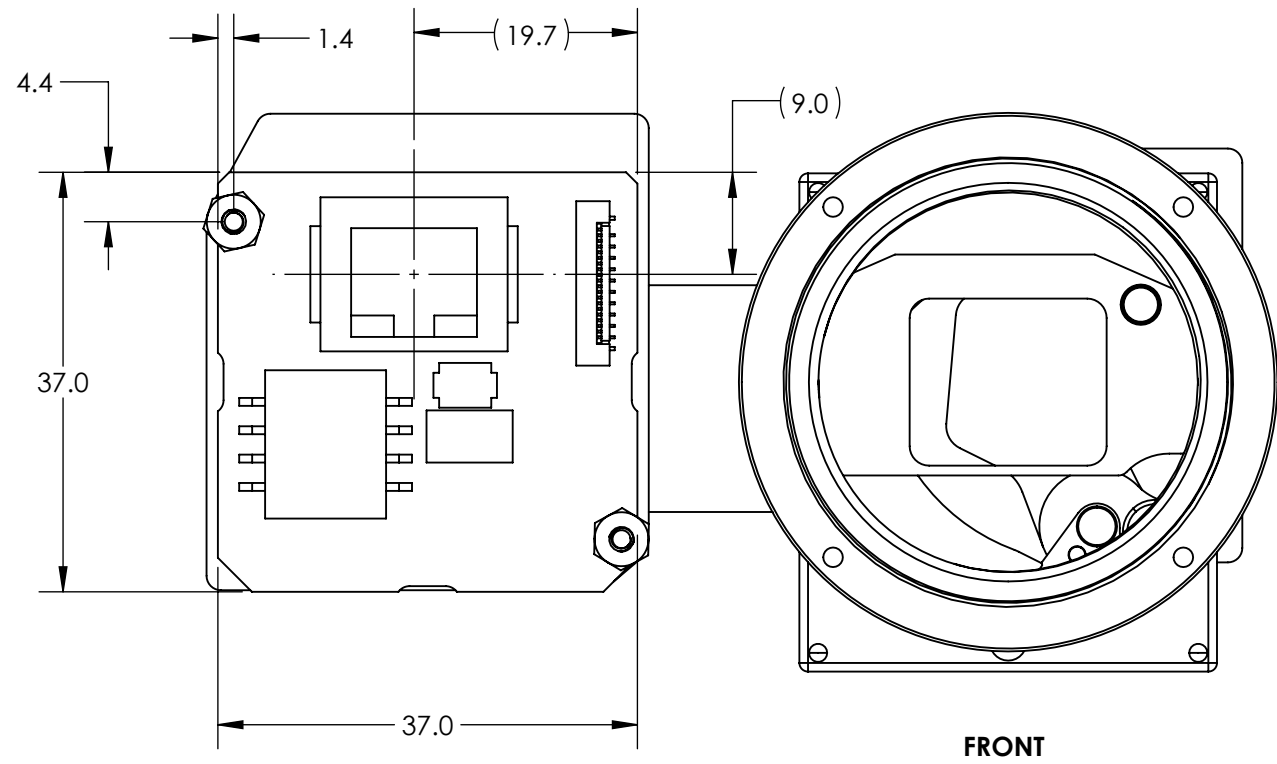
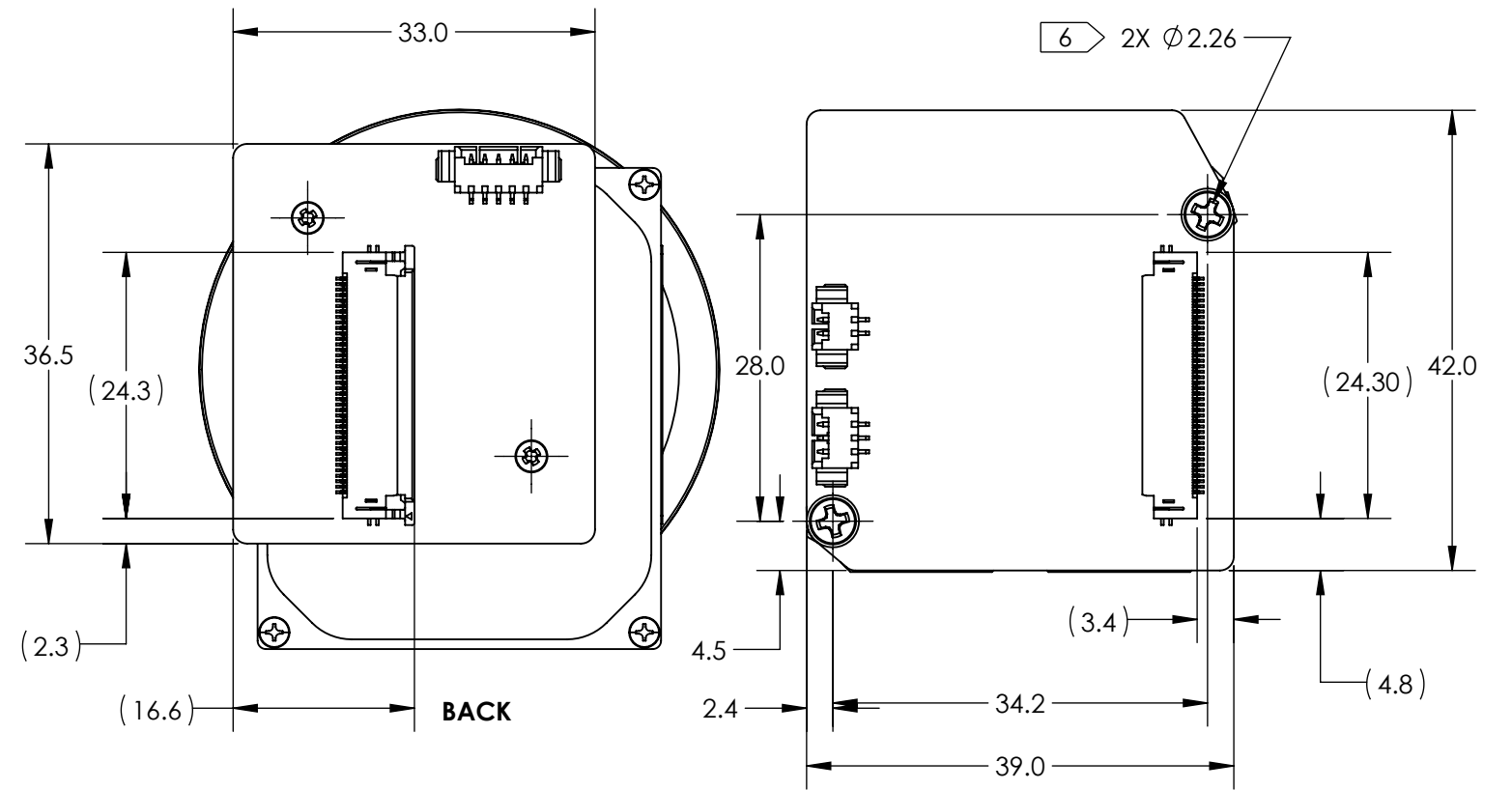
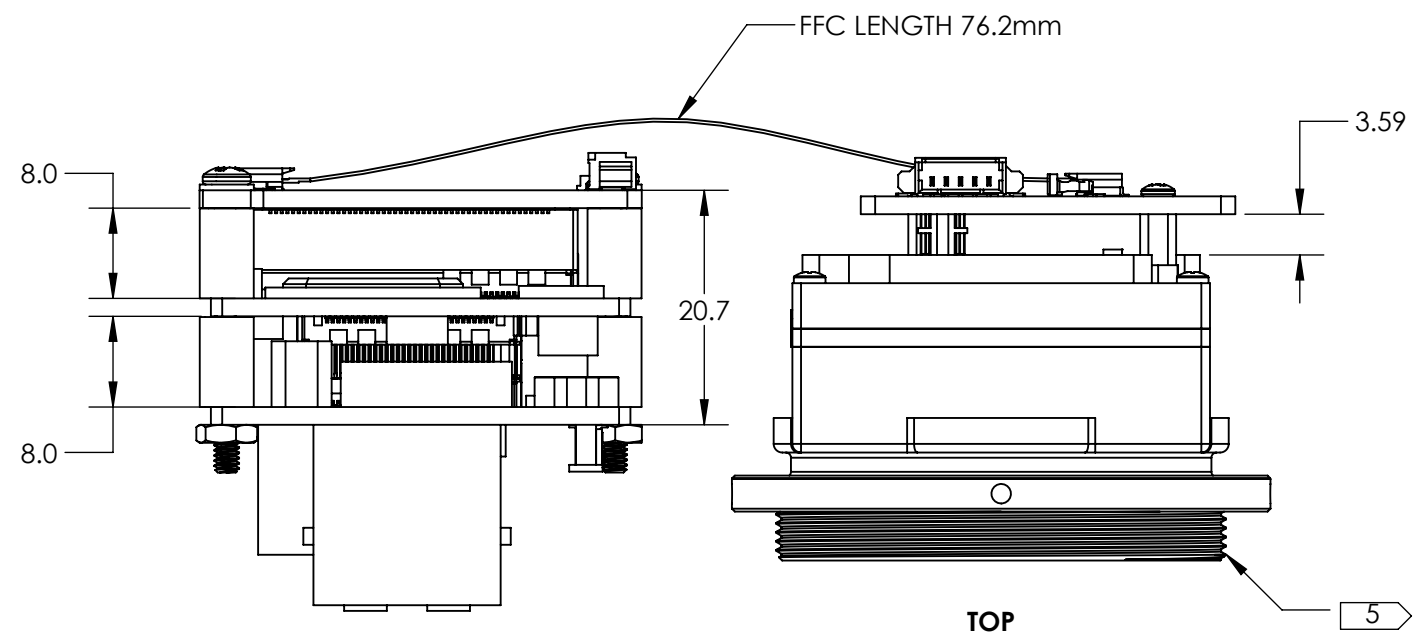
Rev. B

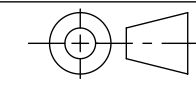
4

3

2

1



Product Export Classification Control Number(ECCN): 30Hz: 6A003.b.4.b 9Hz: 6A993  This document does not contain export-controlled technology.	UNLESS OTHERWISE SPECIFIED DIM ARE IN MILLIMETERS		<b>PROPRIETARY AND CONFIDENTIAL</b> THE INFORMATION CONTAINED IN THIS DRAWING IS THE SOLE PROPERTY OF SIERRA OLYMPIA TECHNOLOGIES, INC. ANY REPRODUCTION IN PART OR AS A WHOLE WITHOUT THE WRITTEN PERMISSION OF SIERRA OLYMPIA TECHNOLOGIES, INC. IS PROHIBITED.  MATERIAL: N/A	DESCRIPTION: ICD, Viento HD10 GigE	
	X $\pm$ 2.5 mm X.X $\pm$ 0.3 mm X.XX $\pm$ 0.13 mm	ANGLES X $\pm$ 1° X.X $\pm$ 0.5°			
	THIRD ANGLE PROJECTION 			DRAWN BY: D. KAMINSKI	
	DO NOT SCALE DRAWING			FINISH: N/A	
CAD CONTROLLED PART. THE NOMINAL PART GEOMETRY IS CONTROLLED BY THE 3D CAD PART FILE.			DRAWING NUMBER: 20-70058		



4

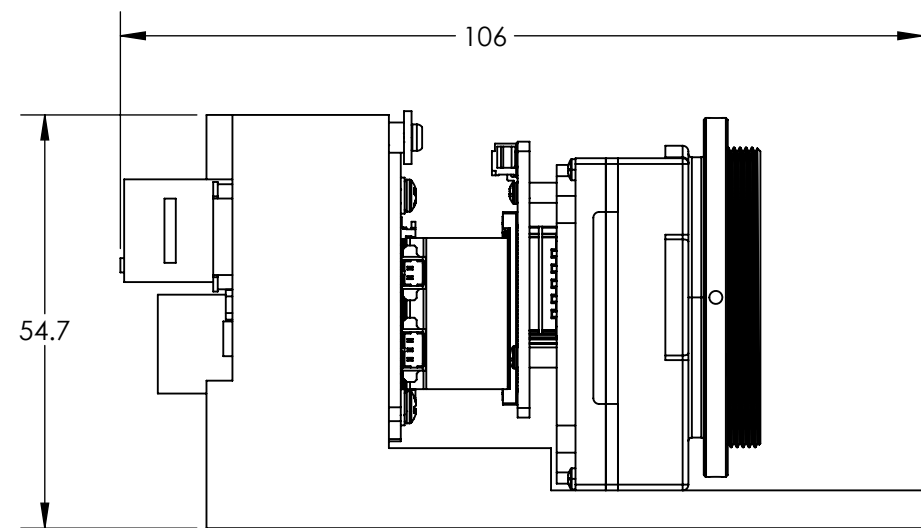
3

2

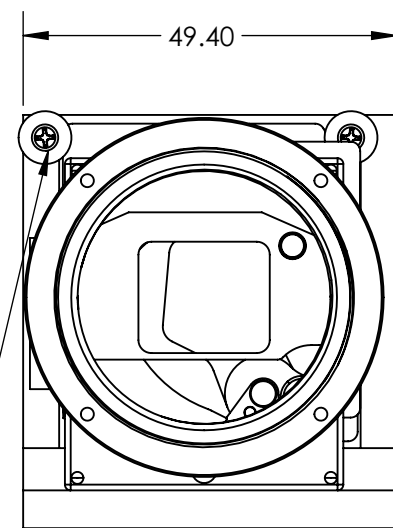
1

TABLE 1

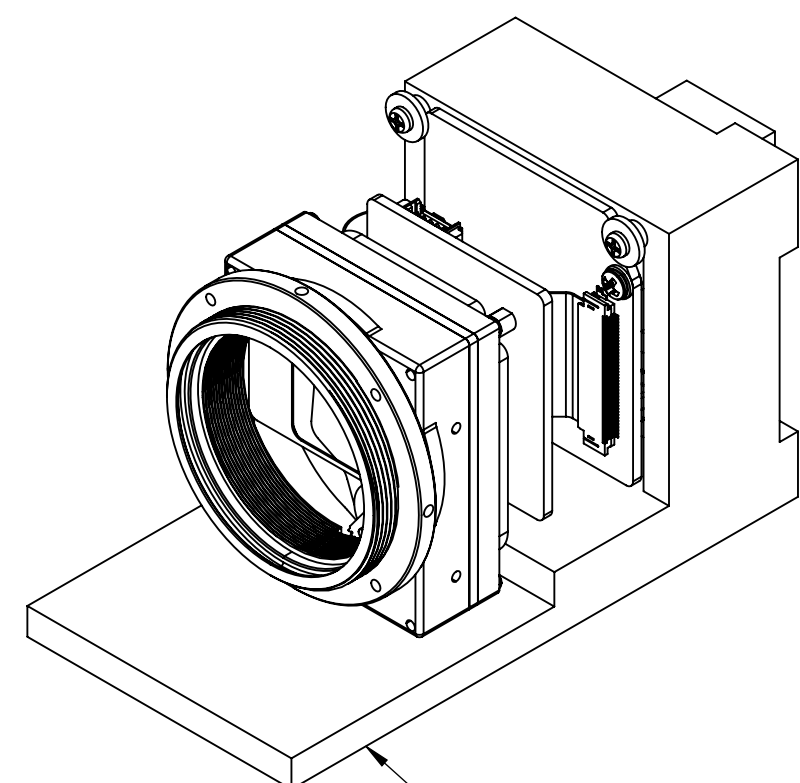
PART NUMBER	DESCRIPTION	TOTAL MASS, INCLUDING BOARDS (g). NOT INCLUDING BENCH TOP MOUNT	SEE DRS ICD FOR LENS DIMENSIONS
SL-D5-1322-N21	Viento HD10 GigE 1280, 21 deg HFOV, No Lens, M34, 30Hz	110	1026792-000
SL-D5-1322-N30	Viento HD10 GigE 1280, 30 deg HFOV, No Lens, M34, 30Hz	110	1026792-010
SL-D5-1322-N60	Viento HD10 GigE 1280, 60 deg HFOV, No Lens, M34, 30Hz	110	1026792-020
SL-D5-1322-A21	Viento HD10 GigE 1280, 21 deg HFOV, 35mm, M34, 30Hz	185	1026792-L00
SL-D5-1322-A30	Viento HD10 GigE 1280, 30 deg HFOV, 25mm, M34, 30Hz	167	1026792-L10
SL-D5-1322-A60	Viento HD10 GigE 1280, 60 deg HFOV, 12.8mm, M34, 30Hz	189	1026792-L20
SL-D5-1922-N21	Viento HD10 GigE 1280, 21 deg HFOV, No Lens, M34, 9Hz	110	1026792-000
SL-D5-1922-N30	Viento HD10 GigE 1280, 30 deg HFOV, No Lens, M34, 9Hz	110	1026792-010
SL-D5-1922-N60	Viento HD10 GigE 1280, 60 deg HFOV, No Lens, M34, 9Hz	110	1026792-020
SL-D5-1922-A21	Viento HD10 GigE 1280, 21 deg HFOV, 35mm, M34, 9Hz	185	1026792-L00
SL-D5-1922-A30	Viento HD10 GigE 1280, 30 deg HFOV, 25mm, M34, 9Hz	167	1026792-L10
SL-D5-1922-A60	Viento HD10 GigE 1280, 60 deg HFOV, 12.8mm, M34, 9Hz	189	1026792-L20



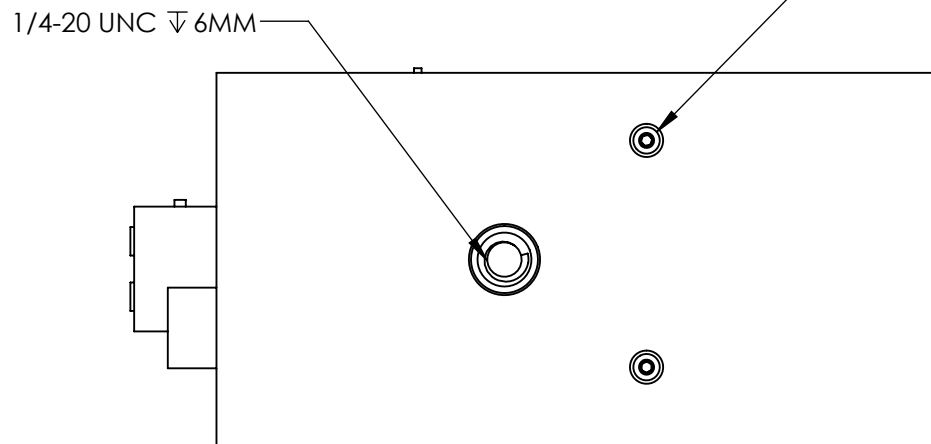
LEFT WITH BENCH TOP MOUNT



FRONT WITH BENCH TOP MOUNT



BENCH TOP MOUNT TO BE REMOVED BEFORE INTEGRATION



BOTTOM WITH BENCH TOP MOUNT

Product Export Classification Control Number(ECCN):  
30Hz: 6A003.b.4.b  
9Hz: 6A993

This document does not contain export-controlled technology.

UNLESS OTHERWISE SPECIFIED DIM ARE IN MILLIMETERS	
X ± 2.5 mm	ANGLES
X.X ± 0.3 mm	X ± 1°
X.XX ± 0.13 mm	X.X ± 0.5°
THIRD ANGLE PROJECTION	
DO NOT SCALE DRAWING	

**PROPRIETARY AND CONFIDENTIAL**  
THE INFORMATION CONTAINED IN THIS DRAWING IS THE SOLE PROPERTY OF SIERRA OLYMPIA TECHNOLOGIES, INC. ANY REPRODUCTION IN PART OR AS A WHOLE WITHOUT THE WRITTEN PERMISSION OF SIERRA OLYMPIA TECHNOLOGIES, INC. IS PROHIBITED.

MATERIAL: N/A

FINISH: N/A

CAD CONTROLLED PART. THE NOMINAL PART GEOMETRY IS CONTROLLED BY THE 3D CAD PART FILE.

		DESCRIPTION: ICD, Viento HD10 GigE	
		SIZE <b>B</b>	DRAWN BY: D. KAMINSKI
DRAWING NUMBER: 20-70058		SHEET 3 OF 3 Rev. B	

4

3

2

1