

4

3

2

1

NOTES:

1. ESTIMATED POWER DRAW IS 4.6W STEADY-STATE. CONDUCTIVE OR CONVECTIVE THERMAL DISSIPATION IS RECOMMENDED.
2. SEE SHEET 3 FOR CONFIGURATIONS, LENS POSITION RELATIVE TO CAMERA BODY WILL VARY WITH FOCUS.
3. J2 GENLOCK
MOLEX "PICOBLADE" 2-PIN, 1.25MM PITCH
MATING CONNECTOR HOUSING: MOLEX 0510210200
CONNECTOR TERMINALS: MOLEX 0500588100 (28-32 AWG)
SEE SOTI TN 50-90001 FOR COMMAND MODES, SIGNAL LEVELS, AND TIMING
4. FFC JUMPER, SAME SIDE CONTACTS, 40 CIRCUITS, .5MM PITCH, GOLD PLATING, RECOMENDED MOLEX PN 0150200429, MAX LENGTH 8IN
5. REFER TO DRS MECHANICAL ICD, 1036965 TENUM1280 MECHANICAL ICD, FOR DETAILED SENSOR CORE DIMENSIONS AND MOUNTING INFORMATION
6. SCREWS (#2-56, 5-16LG) CAN BE USED FOR MOUNTING
7. APPROX MASS: SOTI SDI BOARDS AND HARDWARE 46g
8. APPROX MASS: SOTI BENCH TOP MOUNT AND HARDWARE 24g

REVISIONS

ZONE	REV	DESCRIPTION	ECO	DATE	ENGINEER
	A	INITIAL RELEASE	1754	2024-06-12	D.KAMINSKI

3
Pin
1 GENLOCK
2 GND
RESERVED
DETAIL A
SCALE 2 : 1

4 FFC JUMPER
40.72
40.39
39.29
A
25.99
2
TOP

RESERVED
SOTI GIGE INTERFACE PCBA
36.50
42.16
A
SOTI SENSOR INTERFACE PCBA
J1 FFC
BACK
LEFT

GIGABIT ETHERNET (1000bASE-T)
POWER OVER ETHERNET (POE)PLEORA
iPORT NTX-GIGE
EMBEDDED INTERFACE 900-6003

FRONT
SENSOR CORE

Product Export Classification
Control Number(ECCN):
30Hz: 6A003.b.4.b
9Hz: 6A993This document does not
contain export-controlled
technology.UNLESS OTHERWISE SPECIFIED
DIM ARE IN MILLIMETERS
X ± 2.5 mm
X.X ± 0.3 mm
X.XX ± 0.13 mmANGLES
X ± 1°
X.X ± 0.5°

THIRD ANGLE PROJECTION

DO NOT SCALE DRAWING

PROPRIETARY AND CONFIDENTIAL
THE INFORMATION CONTAINED IN THIS DRAWING IS THE SOLE
PROPERTY OF SIERRA OLYMPIA TECHNOLOGIES, INC. ANY
REPRODUCTION IN PART OR AS A WHOLE WITHOUT THE WRITTEN
PERMISSION OF SIERRA OLYMPIA TECHNOLOGIES, INC. IS PROHIBITED.MATERIAL:
N/AFINISH:
N/ACAD CONTROLLED PART. THE NOMINAL PART GEOMETRY IS CONTROLLED BY
THE 3D CAD PART FILE.

SIERRA-OLYMPIA
TECHNOLOGIES INC.

DESCRIPTION:
ICD, Viento HD10 GigESIZE: **B**
DRAWN BY:
D. KAMINSKIDRAWING NUMBER:
20-70058

SHEET 1 OF 3

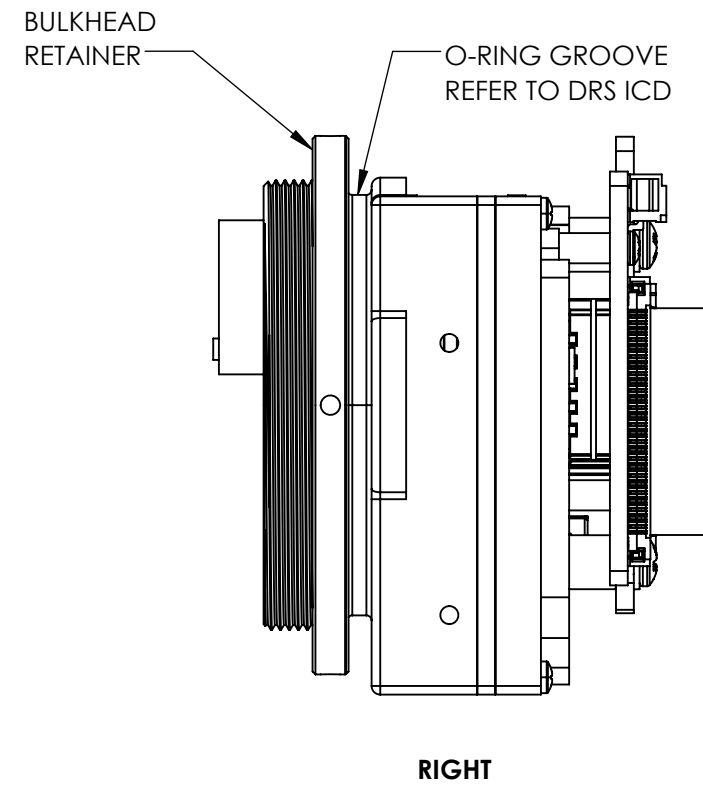
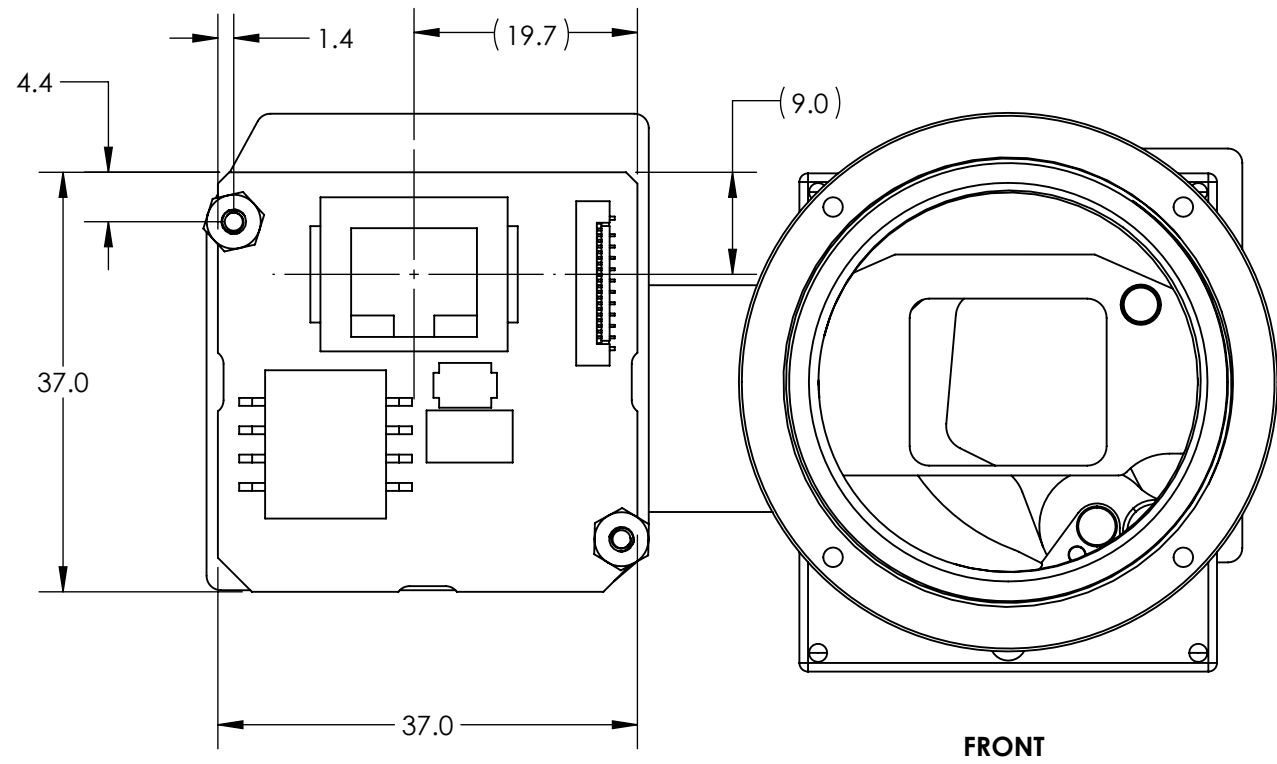
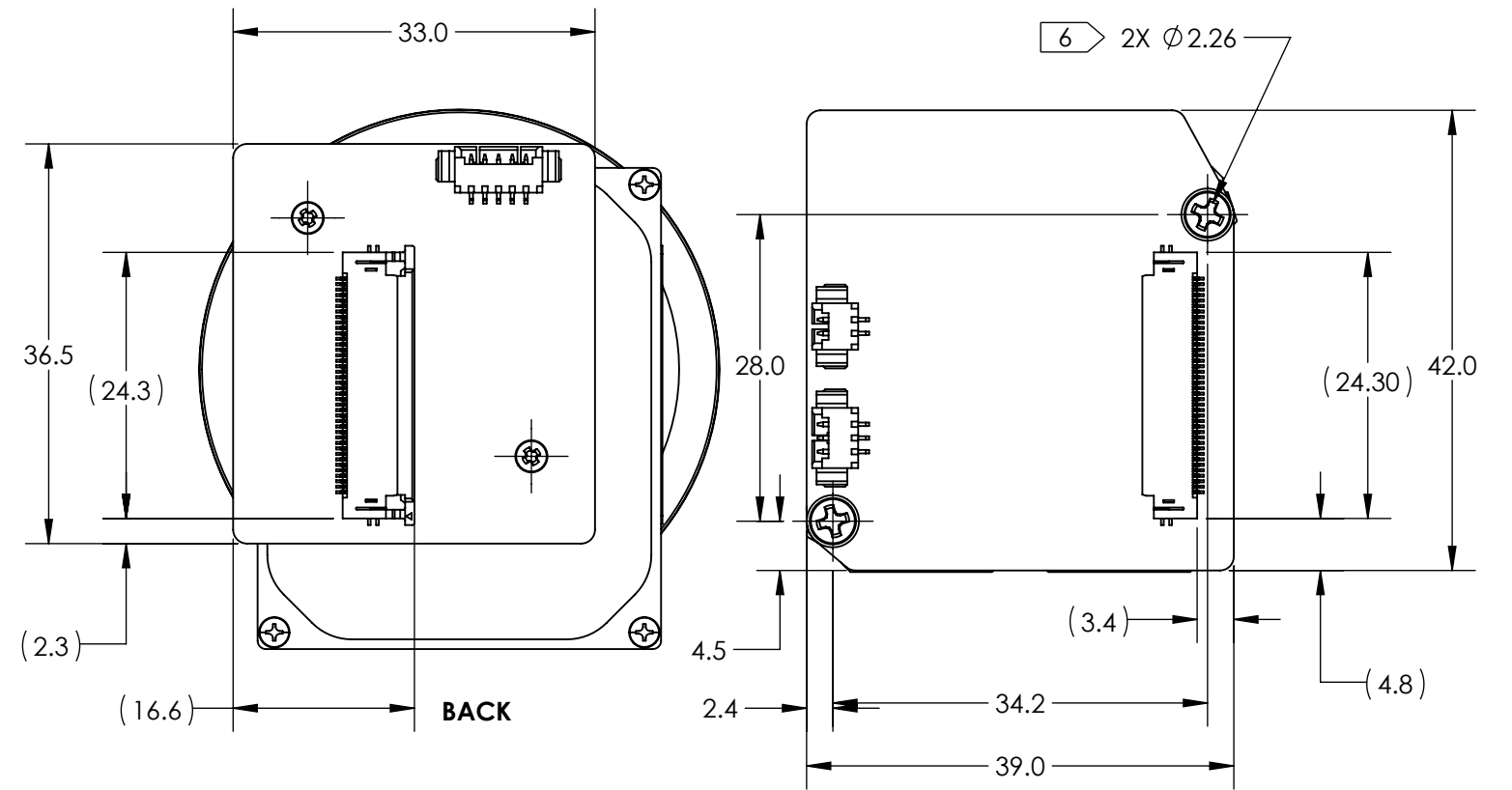
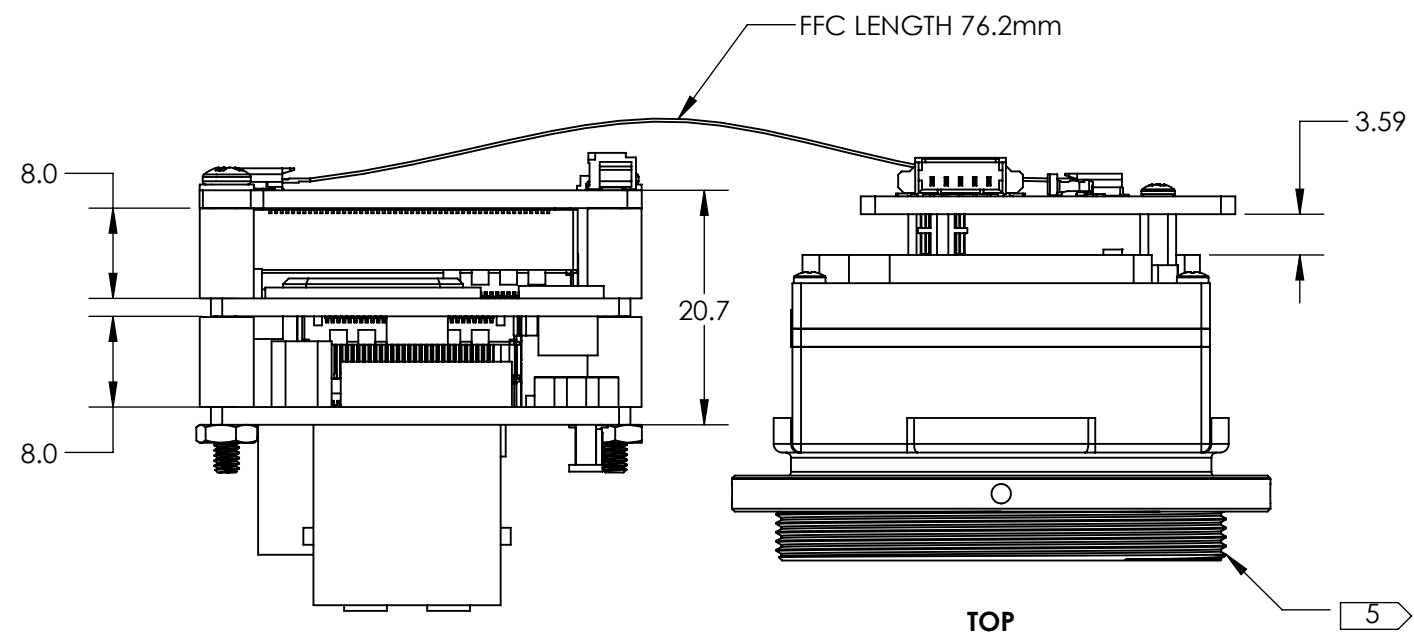
Rev. A

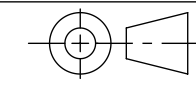
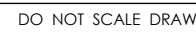
4

3

2

1



Product Export Classification Control Number(ECCN): 30Hz: 6A003.b.4.b 9Hz: 6A993 This document does not contain export-controlled technology.	UNLESS OTHERWISE SPECIFIED DIM ARE IN MILLIMETERS		PROPRIETARY AND CONFIDENTIAL THE INFORMATION CONTAINED IN THIS DRAWING IS THE SOLE PROPERTY OF SIERRA OLYMPIA TECHNOLOGIES, INC. ANY REPRODUCTION IN PART OR AS A WHOLE WITHOUT THE WRITTEN PERMISSION OF SIERRA OLYMPIA TECHNOLOGIES, INC. IS PROHIBITED. MATERIAL: N/A	DESCRIPTION: ICD, Viento HD10 GigE	
	X ± 2.5 mm X.X ± 0.3 mm X.XX ± 0.13 mm	ANGLES X ± 1° X.X ± 0.5°			
	THIRD ANGLE PROJECTION 			FINISH: N/A	
	DO NOT SCALE DRAWING 				



4

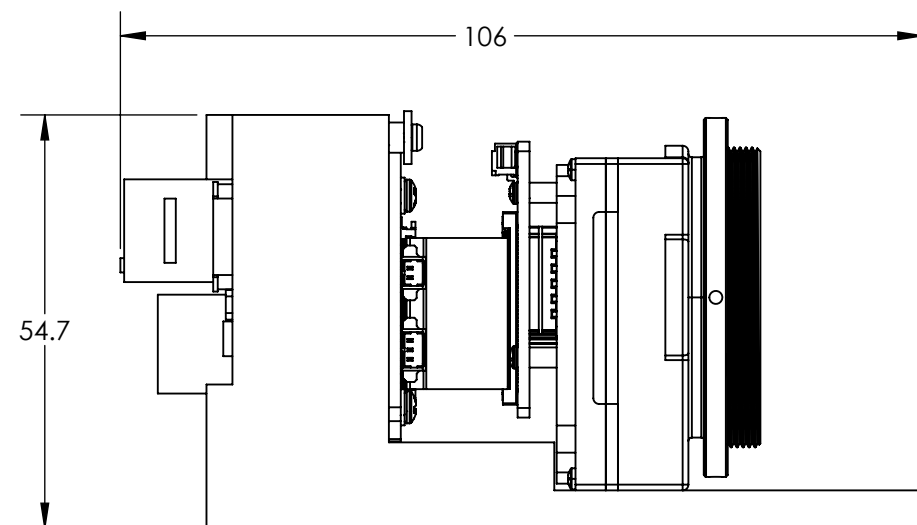
3

2

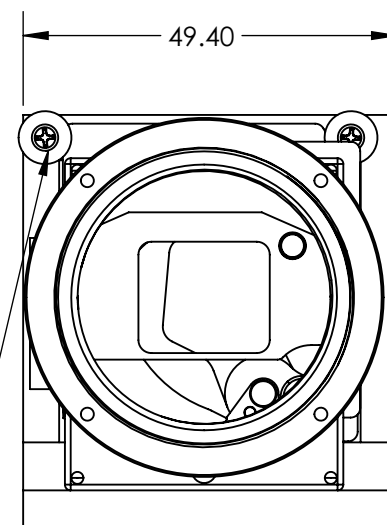
1

TABLE 1

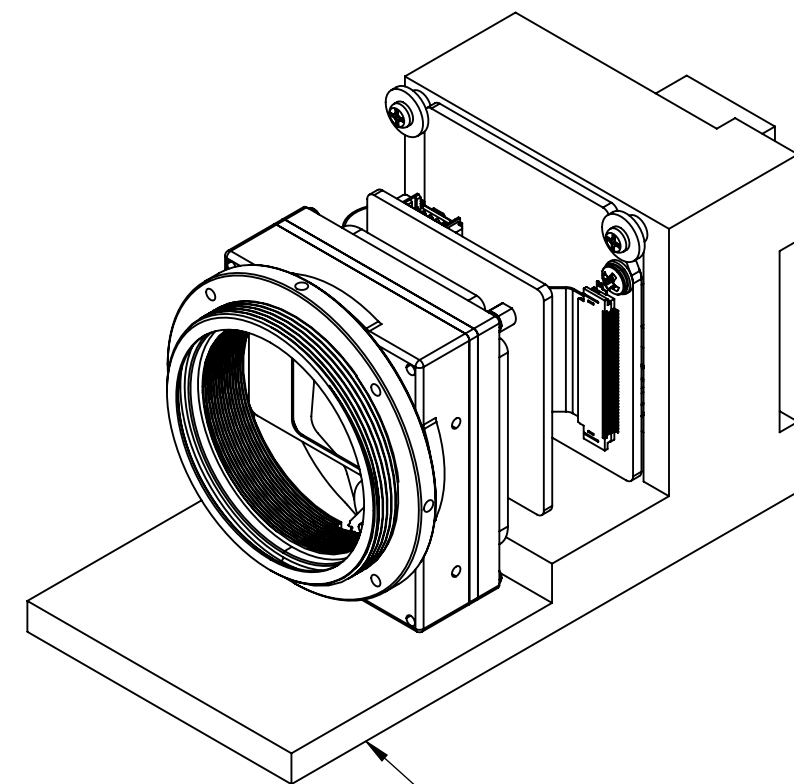
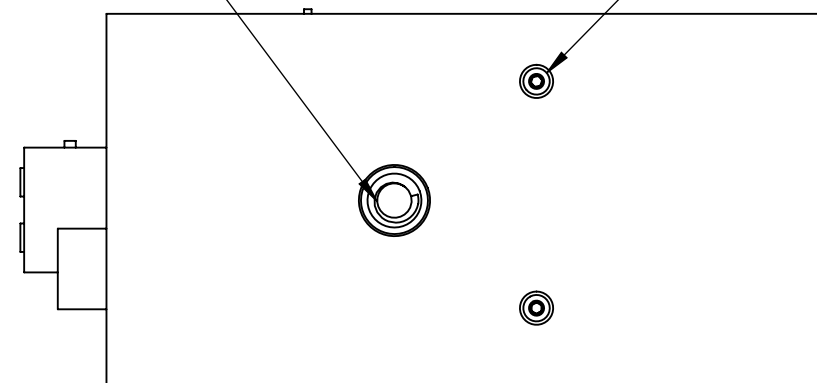
PART NUMBER	DESCRIPTION	TOTAL MASS, INCLUDING BOARDS (g). NOT INCLUDING BENCH TOP MOUNT	SEE DRS ICD FOR LENS DIMENSIONS
SL-D5-1322-N21	Viento HD10 GigE 1280, 21 deg HFOV, No Lens, M34, 30Hz	110	1026792-000
SL-D5-1322-N30	Viento HD10 GigE 1280, 30 deg HFOV, No Lens, M34, 30Hz	110	1026792-010
SL-D5-1322-N60	Viento HD10 GigE 1280, 60 deg HFOV, No Lens, M34, 30Hz	110	1026792-020
SL-D5-1322-A21	Viento HD10 GigE 1280, 21 deg HFOV, 35mm, M34, 30Hz	185	1026792-L00
SL-D5-1322-A30	Viento HD10 GigE 1280, 30 deg HFOV, 25mm, M34, 30Hz	167	1026792-L10
SL-D5-1322-A60	Viento HD10 GigE 1280, 60 deg HFOV, 12.8mm, M34, 30Hz	189	1026762-L20
SL-D5-1922-N21	Viento HD10 GigE 1280, 21 deg HFOV, No Lens, M34, 9Hz	110	1026792-000
SL-D5-1922-N30	Viento HD10 GigE 1280, 30 deg HFOV, No Lens, M34, 9Hz	110	1026792-010
SL-D5-1922-N60	Viento HD10 GigE 1280, 60 deg HFOV, No Lens, M34, 9Hz	110	1026792-020
SL-D5-1922-A21	Viento HD10 GigE 1280, 21 deg HFOV, 35mm, M34, 9Hz	185	1026792-L00
SL-D5-1922-A30	Viento HD10 GigE 1280, 30 deg HFOV, 25mm, M34, 9Hz	167	1026792-L10
SL-D5-1922-A60	Viento HD10 GigE 1280, 60 deg HFOV, 12.8mm, M34, 9Hz	189	1026762-L20



LEFT WITH BENCH TOP MOUNT



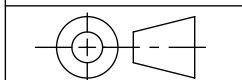
FRONT WITH BENCH TOP MOUNT

BENCH TOP MOUNT
TO BE REMOVED
BEFORE INTEGRATION1/4-20 UNC ∇ 6MM

BOTTOM WITH BENCH TOP MOUNT

REMOVE SCREWS TO
REMOVE BENCH TOP MOUNT
THEN PUSH REAR BOARD
TOWARDS SENSORProduct Export Classification
Control Number(ECCN):
30Hz: 6A003.b.4.b
9Hz: 6A993This document does not
contain export-controlled
technology.UNLESS OTHERWISE SPECIFIED
DIM ARE IN MILLIMETERS
X \pm 2.5 mm
X.X \pm 0.3 mm
X.XX \pm 0.13 mmANGLES
X \pm 1°
X.X \pm 0.5°

THIRD ANGLE PROJECTION



DO NOT SCALE DRAWING

PROPRIETARY AND CONFIDENTIAL
THE INFORMATION CONTAINED IN THIS DRAWING IS THE SOLE
PROPERTY OF SIERRA OLYMPIA TECHNOLOGIES, INC. ANY
REPRODUCTION IN PART OR AS A WHOLE WITHOUT THE WRITTEN
PERMISSION OF SIERRA OLYMPIA TECHNOLOGIES, INC. IS PROHIBITED.MATERIAL:
N/AFINISH:
N/ACAD CONTROLLED PART. THE NOMINAL PART GEOMETRY IS CONTROLLED BY
THE 3D CAD PART FILE.

SIERRA-OLYMPIA
TECHNOLOGIES INC.
DESCRIPTION:
ICD, Viento HD10 GigESIZE: **B** DRAWN BY:
D. KAMINSKI SHEET 3 OF 3DRAWING NUMBER:
20-70058 Rev. A

4

3

2

1