

4

3

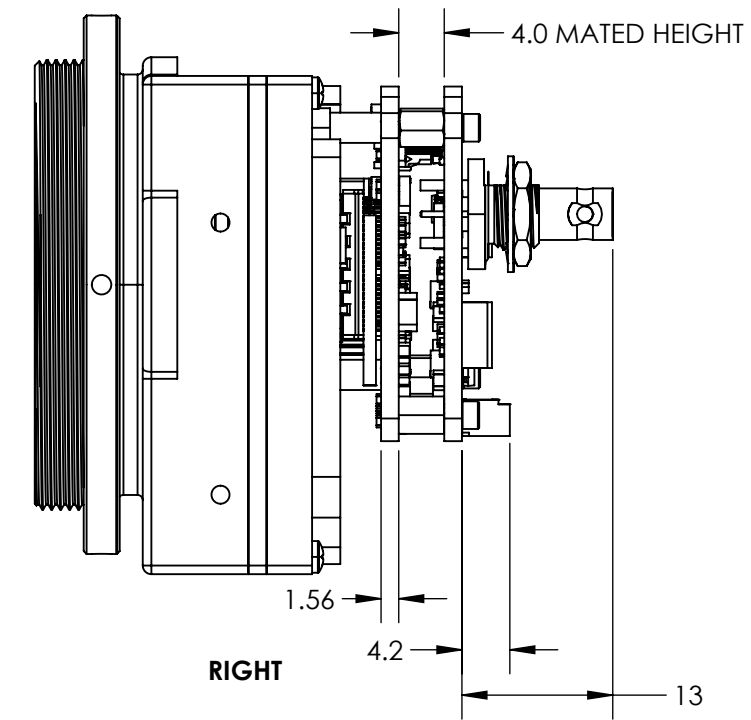
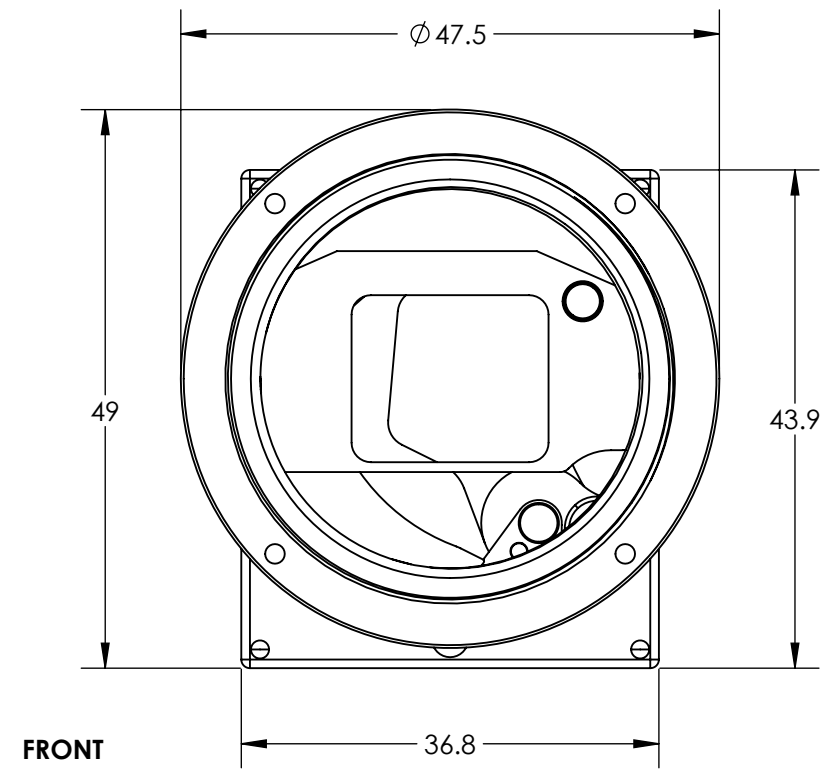
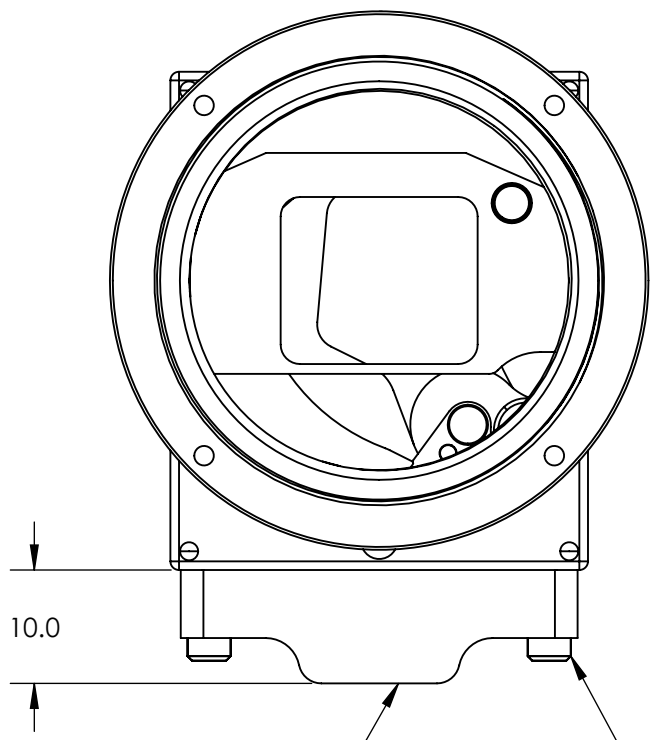
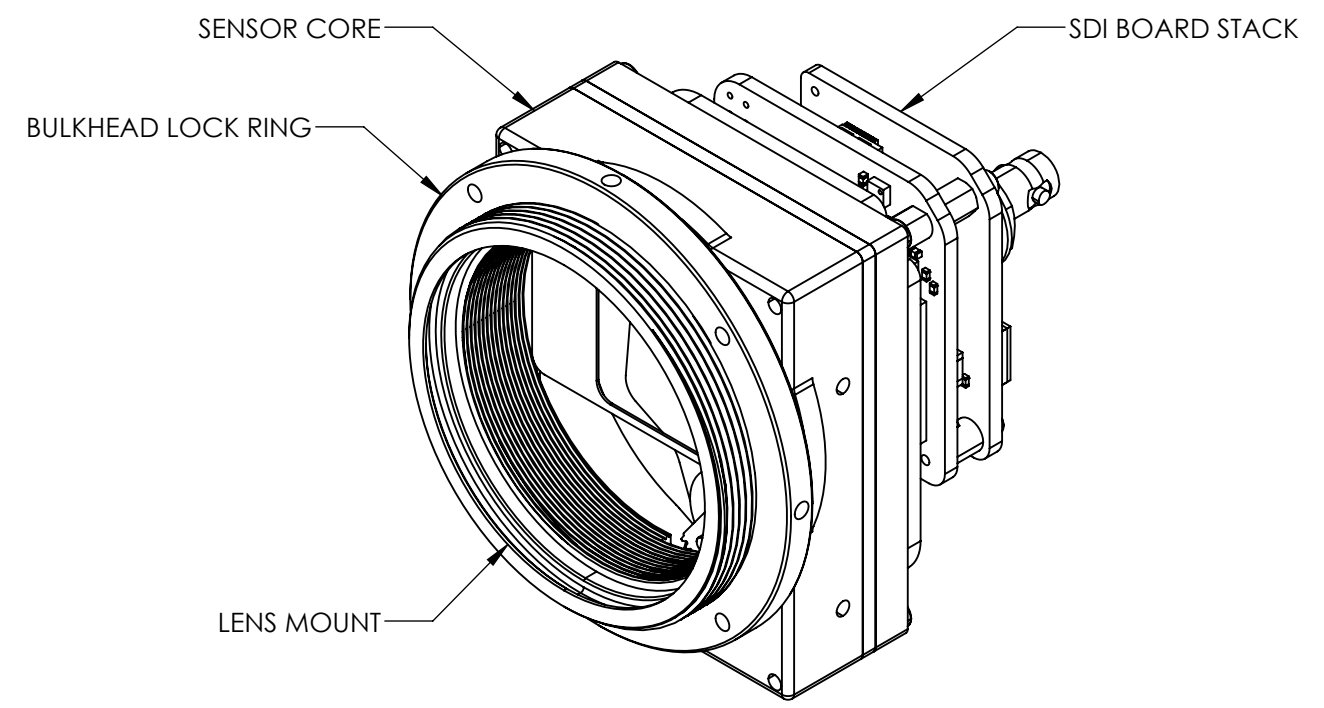
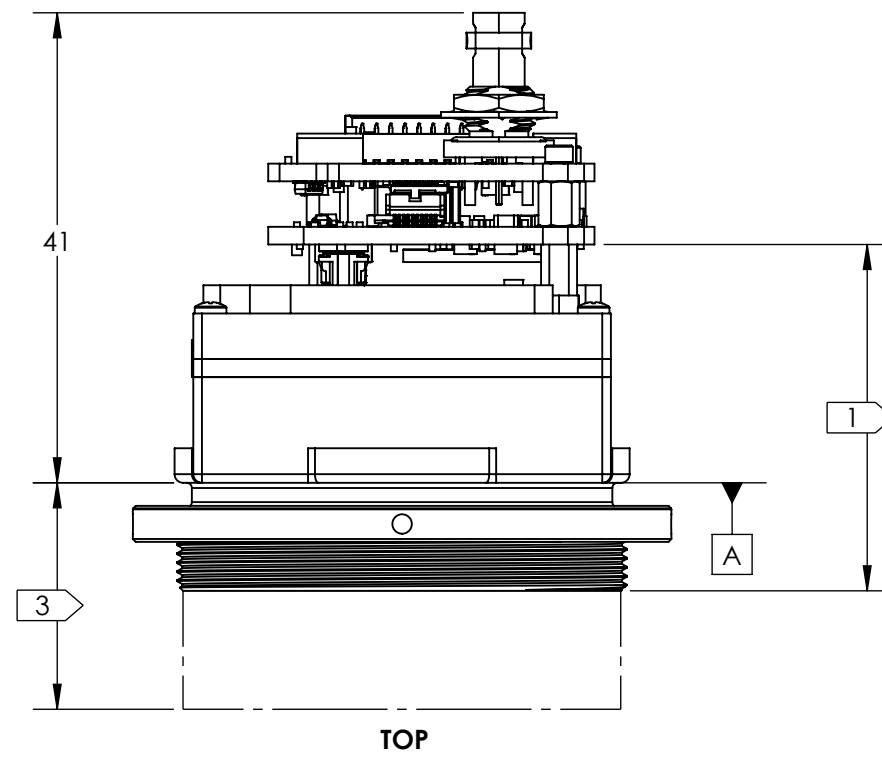
2

1

NOTES:

- 1. REFER TO DRS MECHANICAL ICD, 1036965 TENUM 1280 MECHANICAL ICD, FOR DETAILED SENSOR CORE DIMENSIONS AND MOUNTING INFO
- 2. ESTIMATED POWER DRAW IS 4.1W STEADY-STATE. CONVECTIVE THERMAL DISSIPATION IS RECOMMENDED.
- 3. SEE SHEET 3 TABLE 1 FOR CONFIGURATIONS, LENS POSITION RELATIVE TO CAMERA BODY WILL VARY WITH FOCUS. REFER TO DRS MECHANICAL ICD, 1036965 TENUM 1280 MECHANICAL ICD FOR LENS DIMENSIONS
- 4. FOR ADDITIONAL CONNECTOR INFORMATION REFERENCE ELECTRICAL ICD DOC 20-70054
- 5. OUTSIDE BOARD DIMENSION AND HOLD LOCATION TOLERANCE: +/- 0.13 MM
- 6. APPROX MASS: SOTI SDI BOARDS AND HARDWARE 12g
- 7. APPROX MASS: SOTI TRIPOD MOUNT 10g

REVISIONS					
ZONE	REV.	DESCRIPTION	ECO	DATE	ENGINEER
	A	INITIAL RELEASE	1760	2024-06-10	D. KAMINSKI
	B	UPDATE TRIPOD MOUNT NOTES	1778	2024-08-05	D. KAMINSKI



OPTIONAL TRIPOD MOUNT  
PN 80-20163

TO INSTALL TRIPOD MOUNT  
SCREW IN THE 2 CAPTIVE SCREWS  
WITH 1.5MM HEX DRIVE SIZE

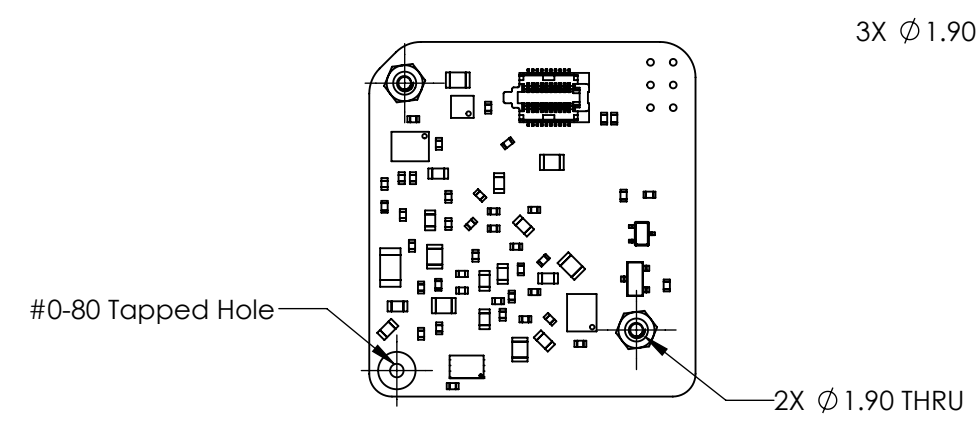
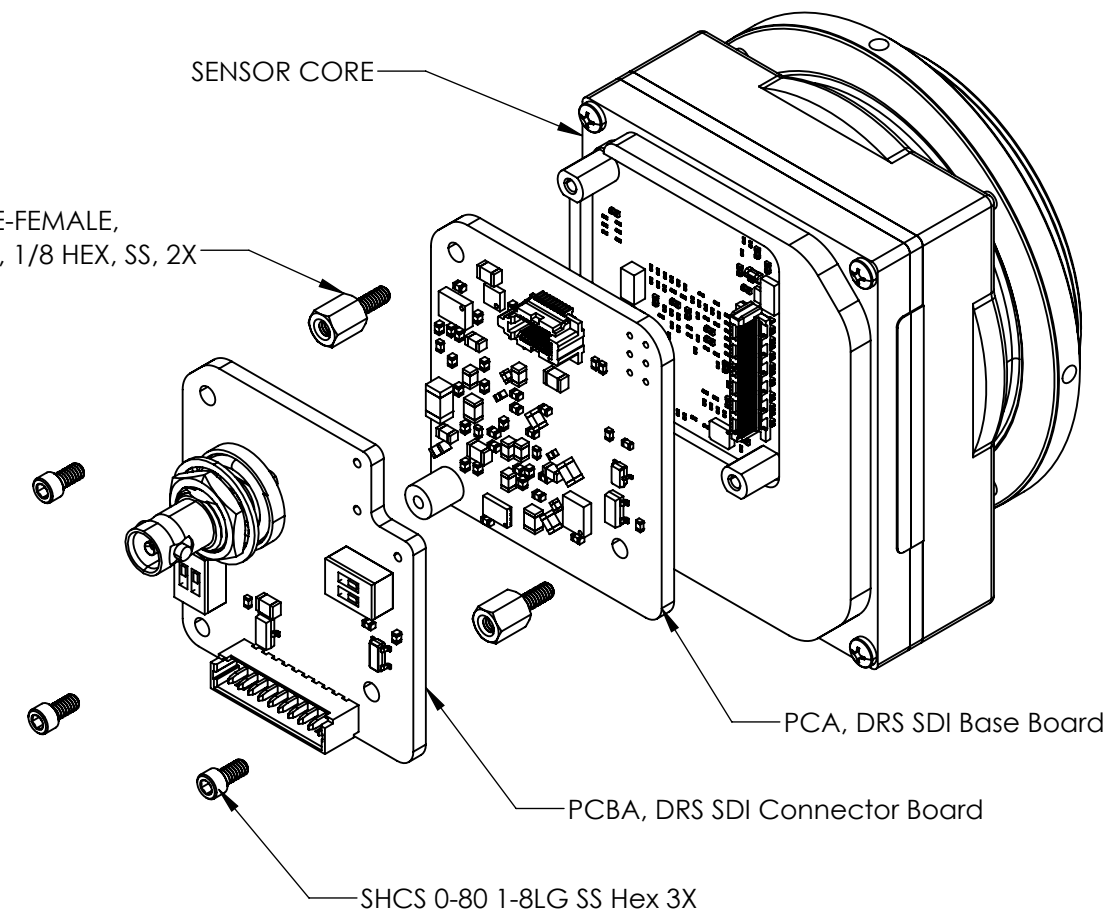
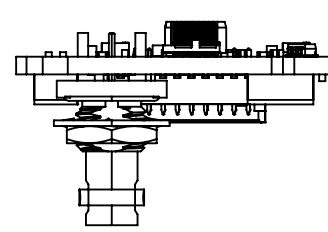
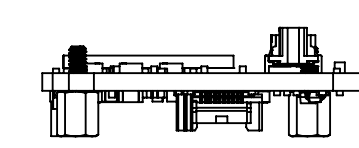
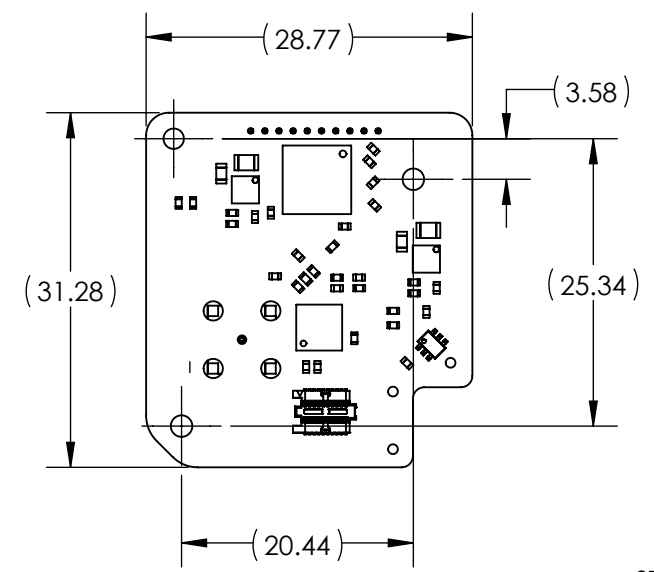
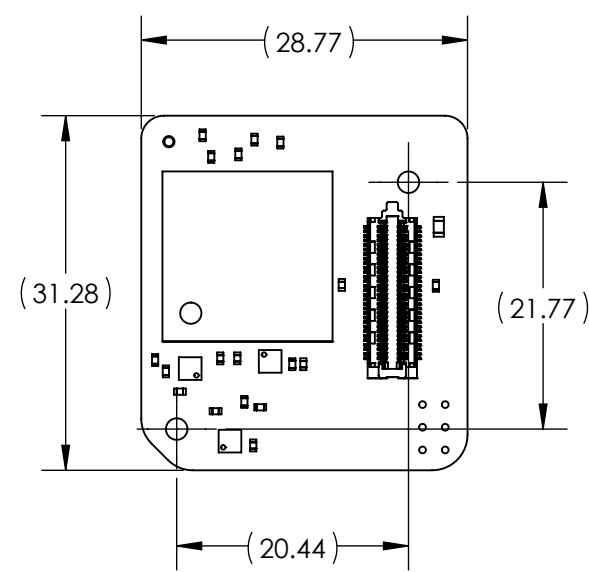
Product Export Classification Control Number(ECCN): 6A003.b.4.b  This document does not contain export-controlled technology.	UNLESS OTHERWISE SPECIFIED DIM ARE IN MILLIMETERS		<b>PROPRIETARY AND CONFIDENTIAL</b> THE INFORMATION CONTAINED IN THIS DRAWING IS THE SOLE PROPERTY OF SIERRA OLYMPIA TECHNOLOGIES, INC. ANY REPRODUCTION IN PART OR AS A WHOLE WITHOUT THE WRITTEN PERMISSION OF SIERRA OLYMPIA TECHNOLOGIES, INC. IS PROHIBITED.	<b>SIERRA-OLYMPIA</b> TECHNOLOGIES INC.	
	X ± 2.5 mm	ANGLES			
	X.X ± 0.3 mm	X ± 1°		SIZE	DRAWN BY:
	X.XX ± 0.13 mm	X.X ± 0.5°		<b>B</b>	D. KAMINSKI
THIRD ANGLE PROJECTION			MATERIAL:	DRAWING NUMBER:	
			N/A	20-70059	
DO NOT SCALE DRAWING			FINISH:	SHEET 1 OF 3	
			N/A	Rev. B	
			CAD CONTROLLED PART. THE NOMINAL PART GEOMETRY IS CONTROLLED BY THE 3D CAD PART FILE.		

4

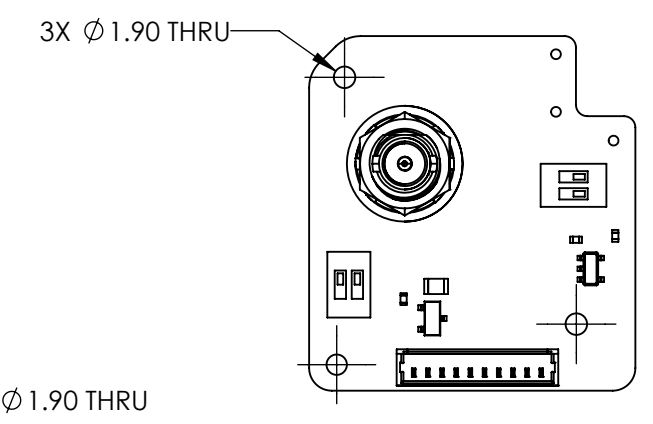
3

2

1



**PCBA, DRS SDI Base Board**  
**APPROX MASS: 5 g**



**PCBA, DRS SDI Interface Board**  
**APPROX MASS: 6 g**

Product Export Classification Control Number(ECCN): 6A003.b.4.b  This document does not contain export-controlled technology.	UNLESS OTHERWISE SPECIFIED DIM ARE IN MILLIMETERS		<b>PROPRIETARY AND CONFIDENTIAL</b> THE INFORMATION CONTAINED IN THIS DRAWING IS THE SOLE PROPERTY OF SIERRA OLYMPIA TECHNOLOGIES, INC. ANY REPRODUCTION IN PART OR AS A WHOLE WITHOUT THE WRITTEN PERMISSION OF SIERRA OLYMPIA TECHNOLOGIES, INC. IS PROHIBITED.		<b>SIERRA-OLYMPIA TECHNOLOGIES INC.</b>	
	X ± 2.5 mm	ANGLES X ± 1°				
	X.X ± 0.3 mm	X.XX ± 0.13 mm	X ± 0.5°	MATERIAL: N/A		
	THIRD ANGLE PROJECTION			FINISH: N/A		SIZE: <b>B</b>
			CAD CONTROLLED PART. THE NOMINAL PART GEOMETRY IS CONTROLLED BY THE 3D CAD PART FILE.		DRAWING NUMBER: 20-70059	SHEET 2 OF 3
DO NOT SCALE DRAWING						Rev. B

4

3

2

1

TABLE 1

PART NUMBER	DESCRIPTION	TOTAL MASS(g), INCLUDING BOARDS NO TRIPOD MOUNT	SEE DRS ICD FOR LENS DIMENSIONS
SL-D5-1326-N21	Viento HD10 SDI 1280, 21 deg HFOV, No Lens, M34, 30Hz	74	1026792-000
SL-D5-1326-N30	Viento HD10 SDI 1280, 30 deg HFOV, No Lens, M34, 30Hz	74	1026792-010
SL-D5-1326-N60	Viento HD10 SDI 1280, 60 deg HFOV, No Lens, M34, 30Hz	74	1026792-020
SL-D5-1326-A21	Viento HD10 SDI 1280, 21 deg HFOV, 35mm, M34, 30Hz	149	1026792-L00
SL-D5-1326-A30	Viento HD10 SDI 1280, 30 deg HFOV, 25mm, M34, 30Hz	131	1026792-L10
SL-D5-1326-A60	Viento HD10 SDI 1280, 60 deg HFOV, 12.8mm, M34, 30Hz	153	1026792-L20

C


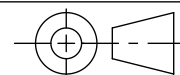
C

B

B

A

A

Product Export Classification Control Number(ECCN): 6A003.b.4.b  This document does not contain export-controlled technology.	UNLESS OTHERWISE SPECIFIED DIM ARE IN MILLIMETERS		<b>PROPRIETARY AND CONFIDENTIAL</b> THE INFORMATION CONTAINED IN THIS DRAWING IS THE SOLE PROPERTY OF SIERRA OLYMPIA TECHNOLOGIES, INC. ANY REPRODUCTION IN PART OR AS A WHOLE WITHOUT THE WRITTEN PERMISSION OF SIERRA OLYMPIA TECHNOLOGIES, INC. IS PROHIBITED.  MATERIAL: N/A  FINISH: N/A  CAD CONTROLLED PART. THE NOMINAL PART GEOMETRY IS CONTROLLED BY THE 3D CAD PART FILE.	 <b>SIERRA-OLYMPIA TECHNOLOGIES INC.</b> DESCRIPTION: Mechanical ICD Viento HD10 SDI			
	X ± 2.5 mm X.X ± 0.3 mm X.XX ± 0.13 mm	ANGLES X ± 1° X.X ± 0.5°			SIZE <b>B</b>	DRAWN BY: D. KAMINSKI	SHEET 3 OF 3
	THIRD ANGLE PROJECTION				DRAWING NUMBER: 20-70059		
					Rev. B		
DO NOT SCALE DRAWING							

4

3

2

1