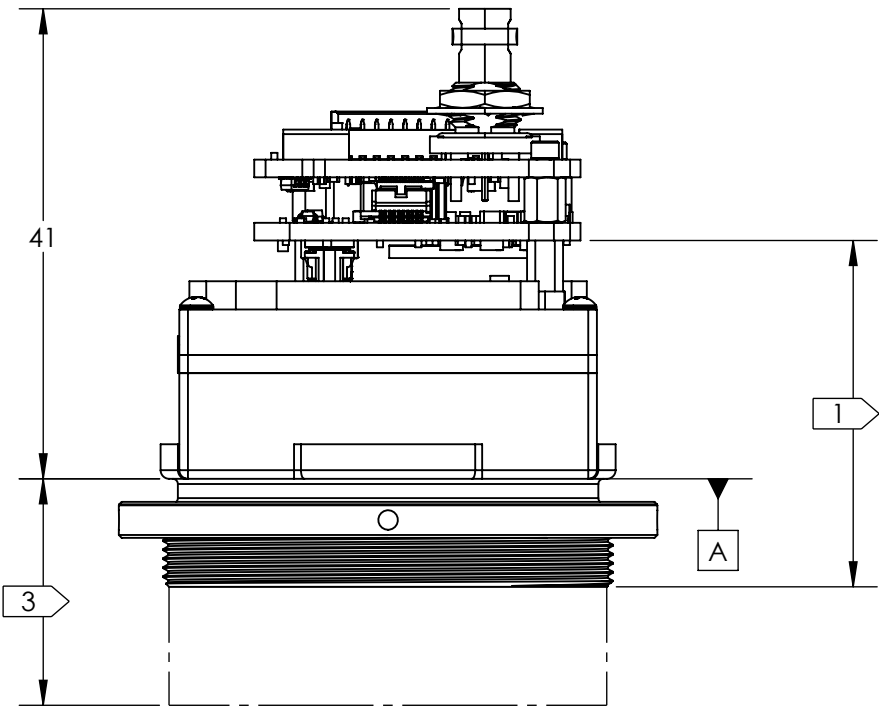
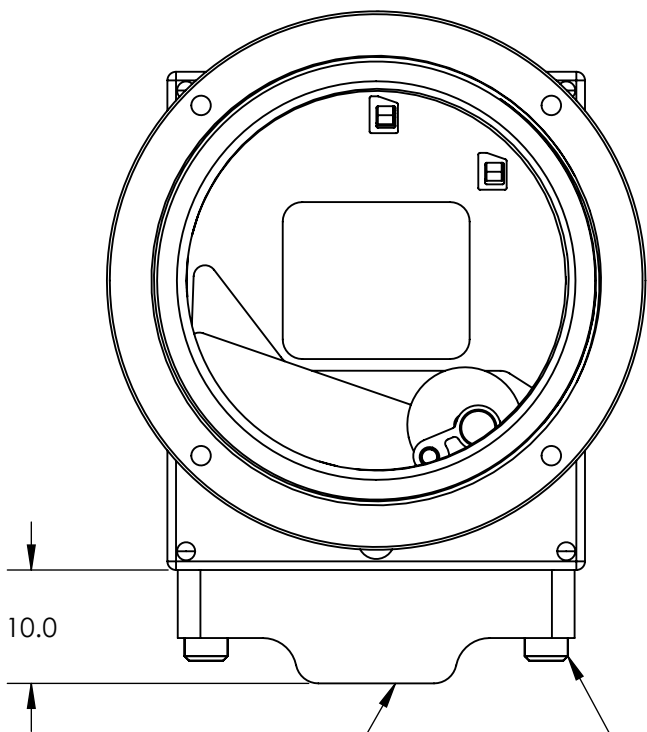


NOTES:

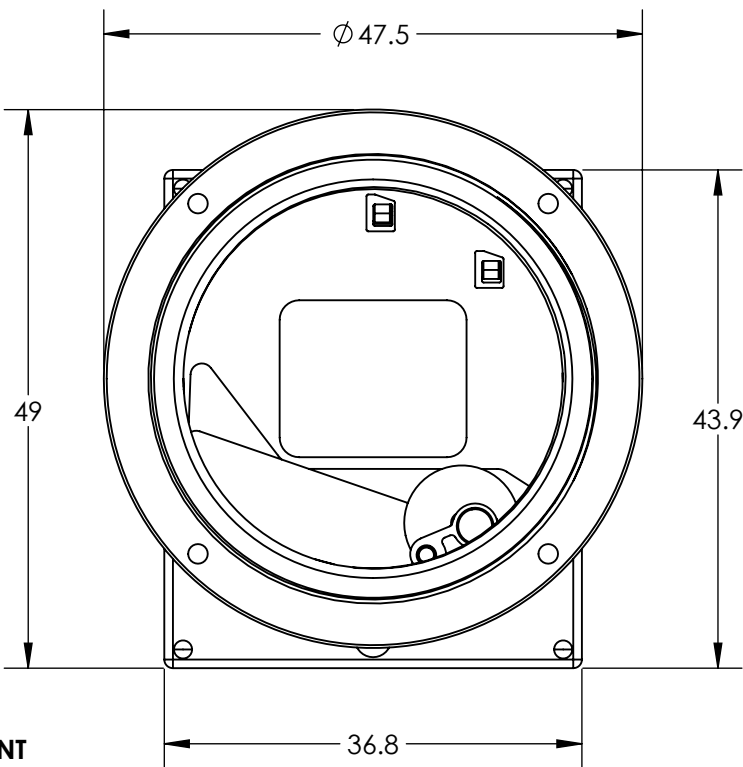
1. REFER TO DRS MECHANICAL ICD, 1036965 TENUM 1280 MECHANICAL ICD, FOR DETAILED SENSOR CORE DIMENSIONS AND MOUNTING INFO
2. ESTIMATED POWER DRAW IS 4.1W STEADY-STATE. CONVECTIVE THERMAL DISSIPATION IS RECOMMENDED.
3. SEE SHEET 3 TABLE 1 FOR CONFIGURATIONS, LENS POSITION RELATIVE TO CAMERA BODY WILL VARY WITH FOCUS. REFER TO DRS MECHANICAL ICD, 1036965 TENUM 1280 MECHANICAL ICD FOR LENS DIMENSIONS
4. FOR ADDITIONAL CONNECTOR INFORMATION REFERENCE ELECTRICAL ICD DOC 20-70054
5. OUTSIDE BOARD DIMENSION AND HOLD LOCATION TOLERANCE: +/- 0.13 MM
6. APPROX MASS: SOTI SDI BOARDS AND HARDWARE 12g
7. APPROX MASS: SOTI TRIPOD MOUNT 10g



TOP

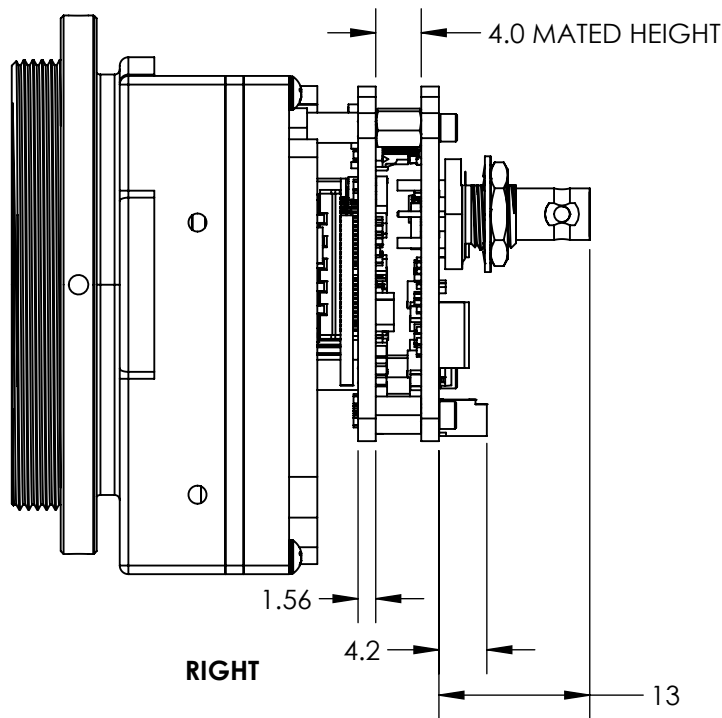
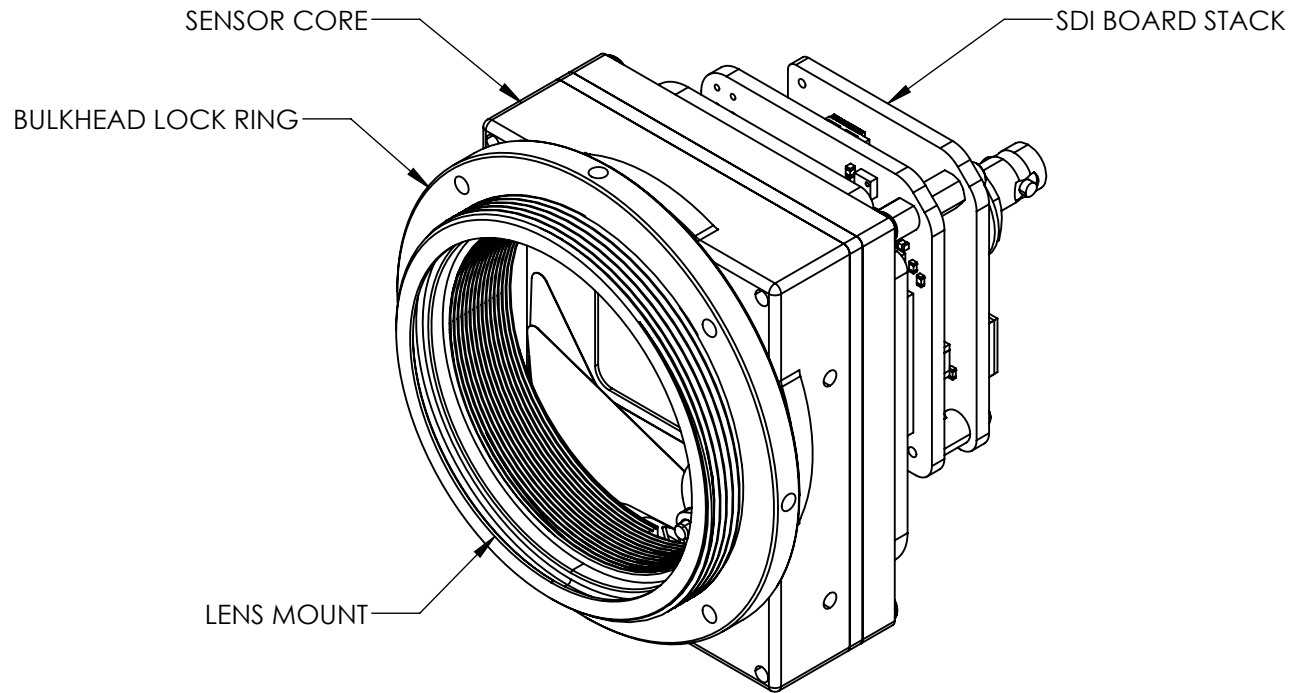


FRONT



TO INSTALL TRIPOD MOUNT
SCREW IN THE 2 CAPTIVE SCREWS
WITH 1.5MM HEX DRIVE SIZE

OPTIONAL TRIPOD MOUNT
PN 80-20163



RIGHT

Product Export Classification
Control Number(ECCN):
6A003.b.4.b

This document does not
contain export-controlled
technology.

UNLESS OTHERWISE SPECIFIED
DIM ARE IN MILLIMETERS

X ± 2.5 mm	ANGLES
X.X ± 0.3 mm	X ± 1°
X.XX ± 0.13 mm	X.X ± 0.5°

THIRD ANGLE PROJECTION

DO NOT SCALE DRAWING

PROPRIETARY AND CONFIDENTIAL
THE INFORMATION CONTAINED IN THIS DRAWING IS THE SOLE
PROPERTY OF SIERRA OLYMPIA TECHNOLOGIES, INC. ANY
REPRODUCTION IN PART OR AS A WHOLE WITHOUT THE WRITTEN
PERMISSION OF SIERRA OLYMPIA TECHNOLOGIES, INC. IS PROHIBITED.

MATERIAL:
N/A

FINISH:
N/A

CAD CONTROLLED PART. THE NOMINAL PART GEOMETRY IS CONTROLLED BY
THE 3D CAD PART FILE.

SIERRA-OLYMPIA
TECHNOLOGIES INC.

DESCRIPTION:
Mechanical ICD Viento HD10 SDI

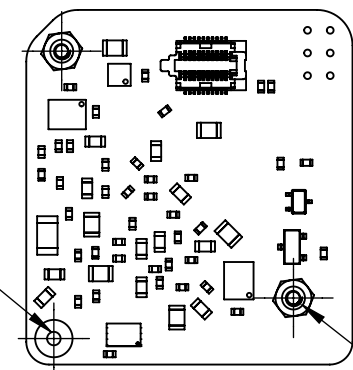
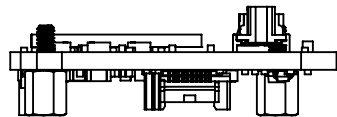
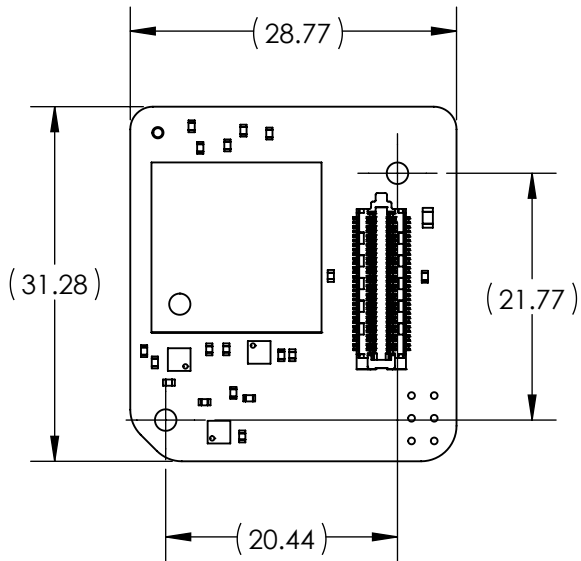
SIZE
B

DRAWN BY:
D. KAMINSKI

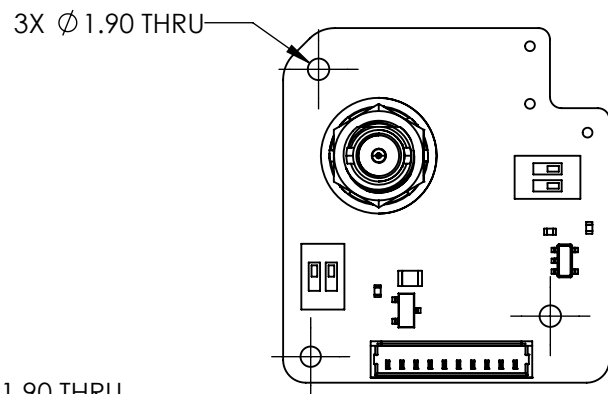
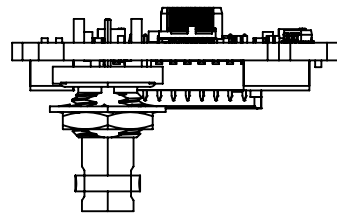
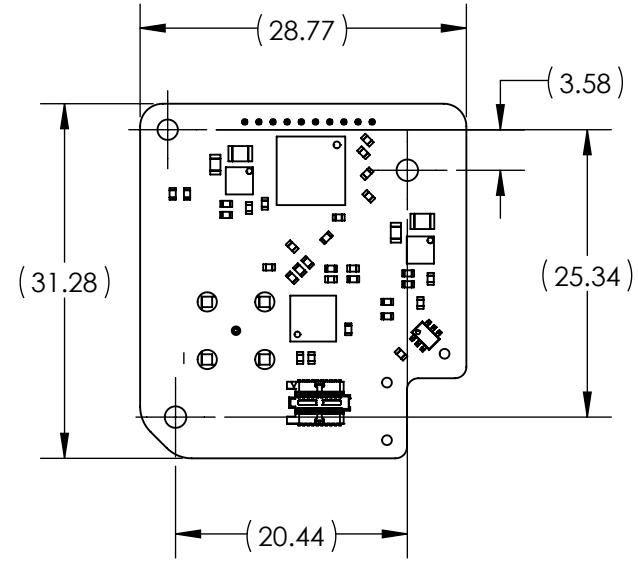
DRAWING NUMBER:
20-70059

SHEET 1 OF 3

Rev. C

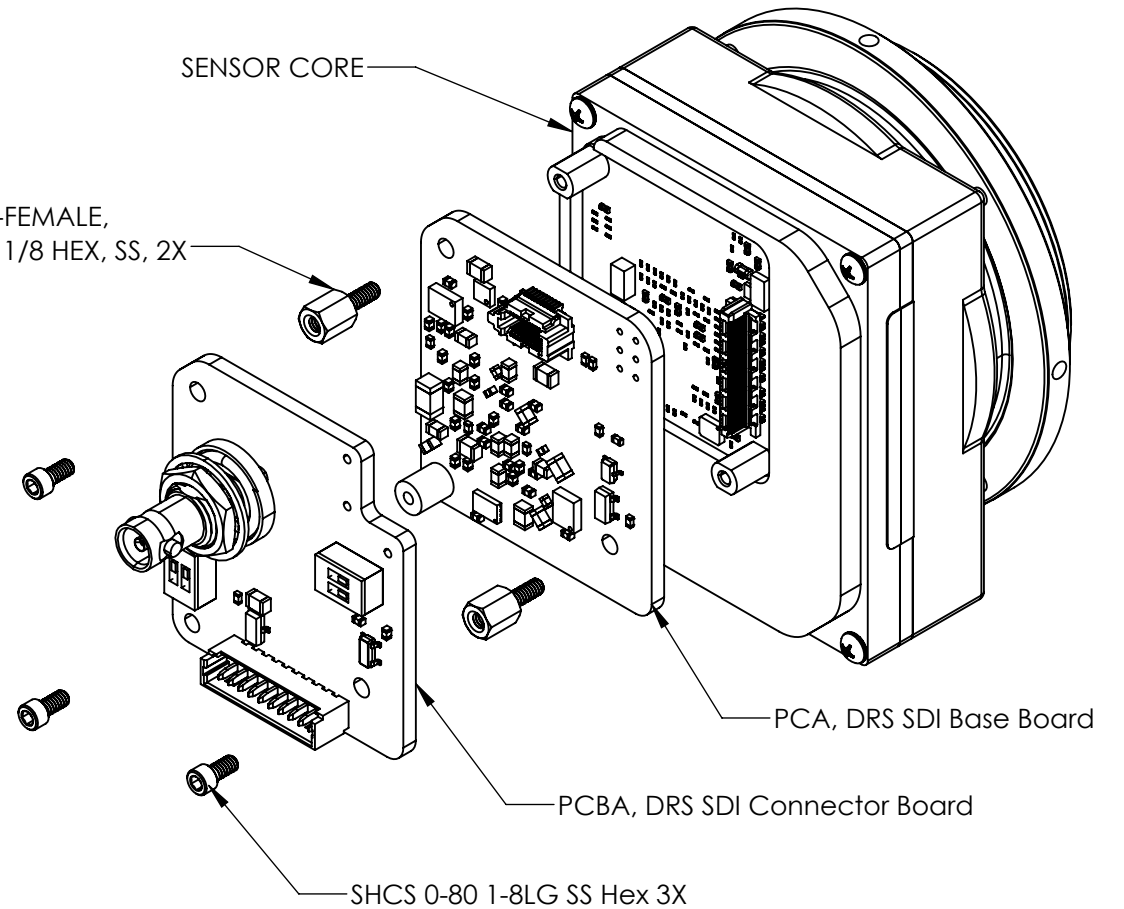




PCBA, DRS SDI Base Board
APPROX MASS: 5 g



PCBA, DRS SDI Interface Board
APPROX MASS: 6 g

STANDOFF, MALE-FEMALE,
0-80, 7.93MM LG, 1/8 HEX, SS, 2X



<div>Product Export Classification Control Number(ECCN): 6A003.b.4.b</div> <div>This document does not contain export-controlled technology.</div>	UNLESS OTHERWISE SPECIFIED DIM ARE IN MILLIMETERS		PROPRIETARY AND CONFIDENTIAL THE INFORMATION CONTAINED IN THIS DRAWING IS THE SOLE PROPERTY OF SIERRA OLYMPIA TECHNOLOGIES, INC. ANY REPRODUCTION IN PART OR AS A WHOLE WITHOUT THE WRITTEN PERMISSION OF SIERRA OLYMPIA TECHNOLOGIES, INC. IS PROHIBITED.		<div> SIERRA-OLYMPIA TECHNOLOGIES INC.</div>		DESCRIPTION: Mechanical ICD Viento HD10 SDI		
	X ± 2.5 mm X.X ± 0.3 mm X.XX ± 0.13 mm	ANGLES X ± 1° X.X ± 0.5°							MATERIAL: N/A
	THIRD ANGLE PROJECTION		FINISH: N/A		SIZE B		DRAWN BY: D. KAMINSKI		SHEET 2 OF 3
			CAD CONTROLLED PART. THE NOMINAL PART GEOMETRY IS CONTROLLED BY THE 3D CAD PART FILE.		DRAWING NUMBER:		20-70059		
	DO NOT SCALE DRAWING				Rev. C				

[illegible]