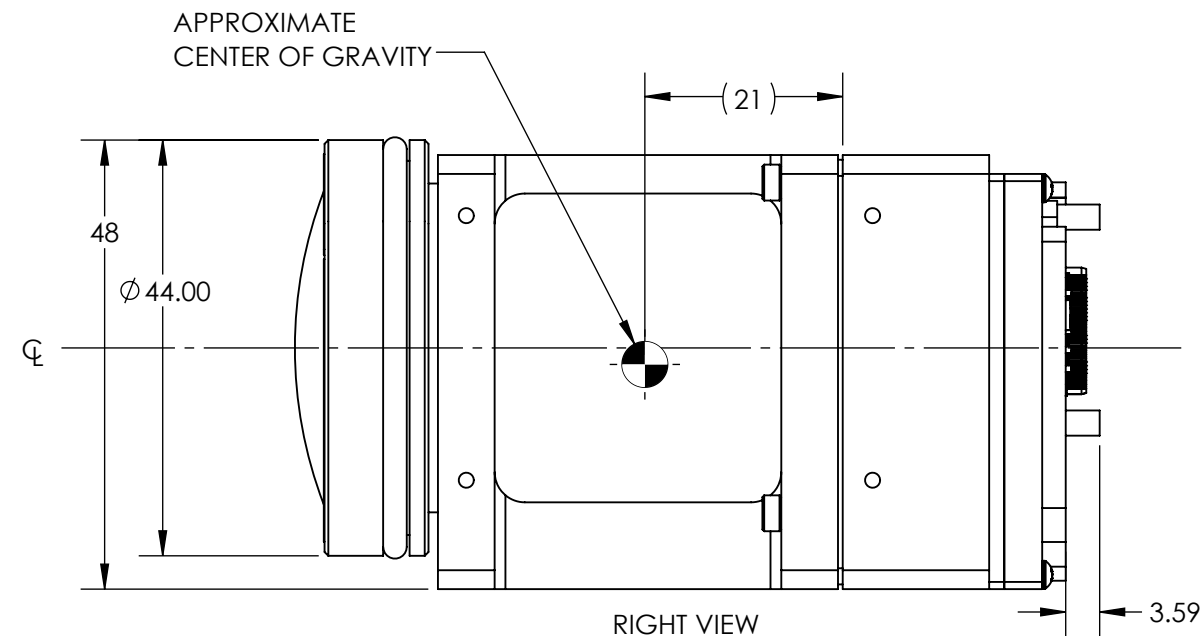
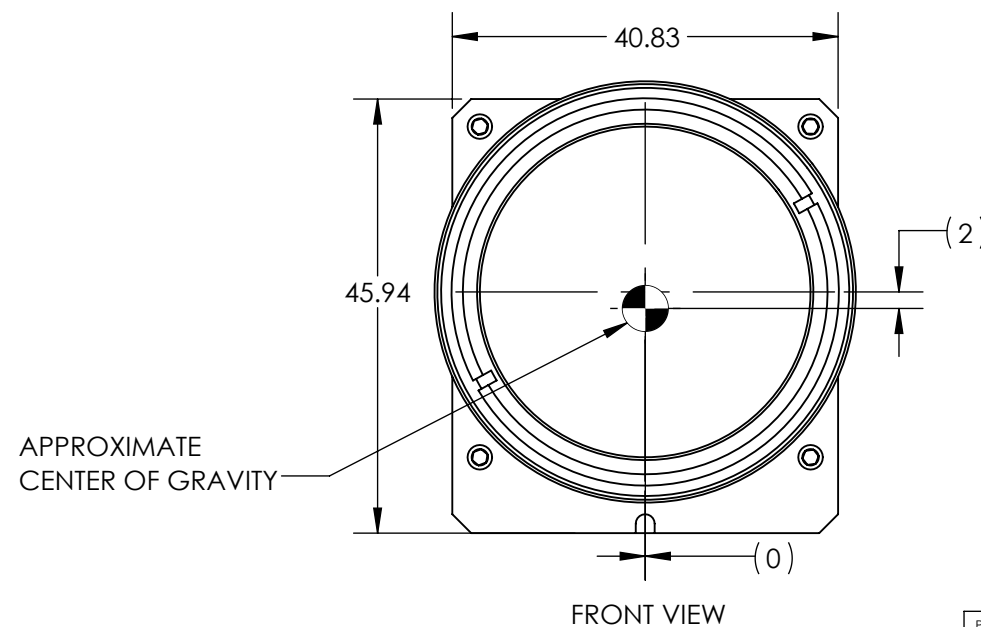
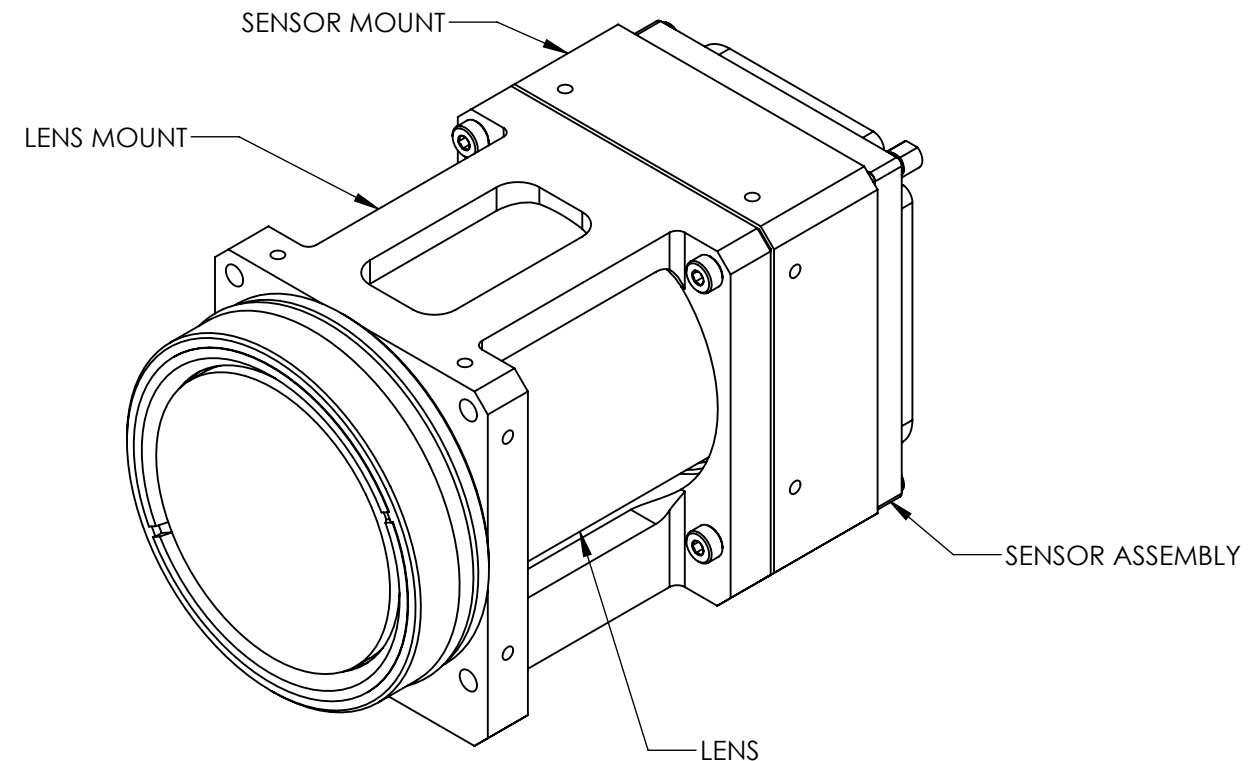
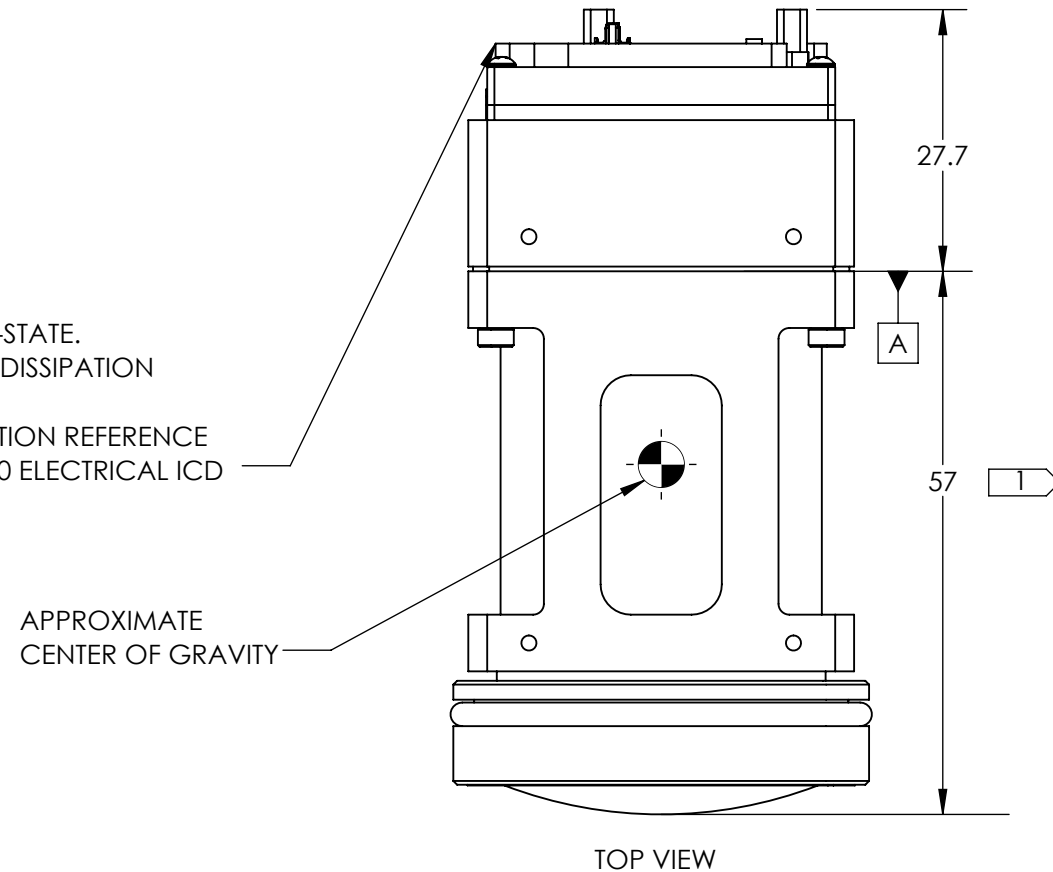


NOTES:

- 1. OVERALL LENGTH DEPENDENT ON FOCUS POSITION, -2MM/+3MM
- 2. OUTSIDE BOARD DIMENSIONS AND HOLE LOCATION TOLERANCE: +/-0.127 MM
- 3. MOUNTING HOLES ACCESSIBLE IN ALL CONFIGURATIONS. EXCEEDING INDICATED DEPTH MAY RESULT IN DAMAGE TO CAMERA
- 4. CENTER OF GRAVITY IS SHOWN IN APPROXIMATE LOCATIONS BASED ON MODELED VIEWS

ESTIMATED POWER DRAW IS 2.3W STEADY-STATE. CONDUCTIVE OR CONVECTIVE THERMAL DISSIPATION IS RECOMMENDED FOR ADDITIONAL CONNECTOR INFORMATION REFERENCE DRS ELECTRICAL ICD, 1040049 TENUM 1280 ELECTRICAL ICD

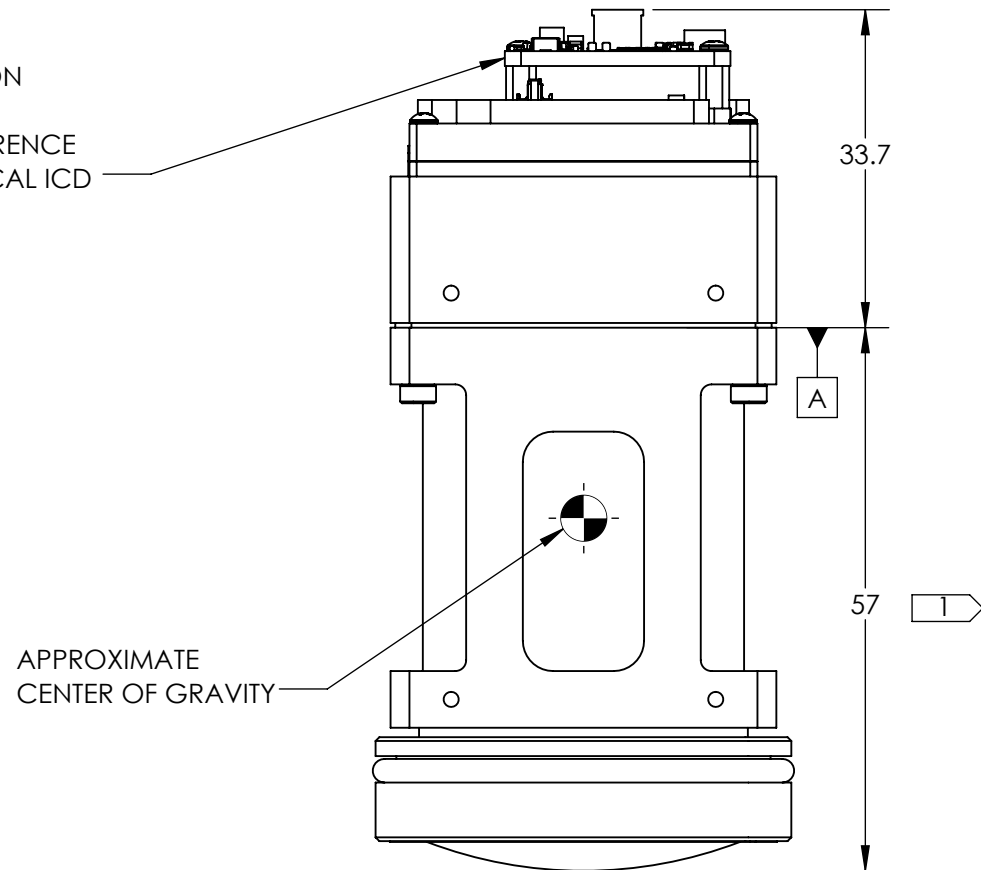
REVISIONS					
ZONE	REV.	DESCRIPTION	ECO	DATE	ENGINEER
	A	INITIAL RELEASE	1889	2025-05-12	C. PRICE



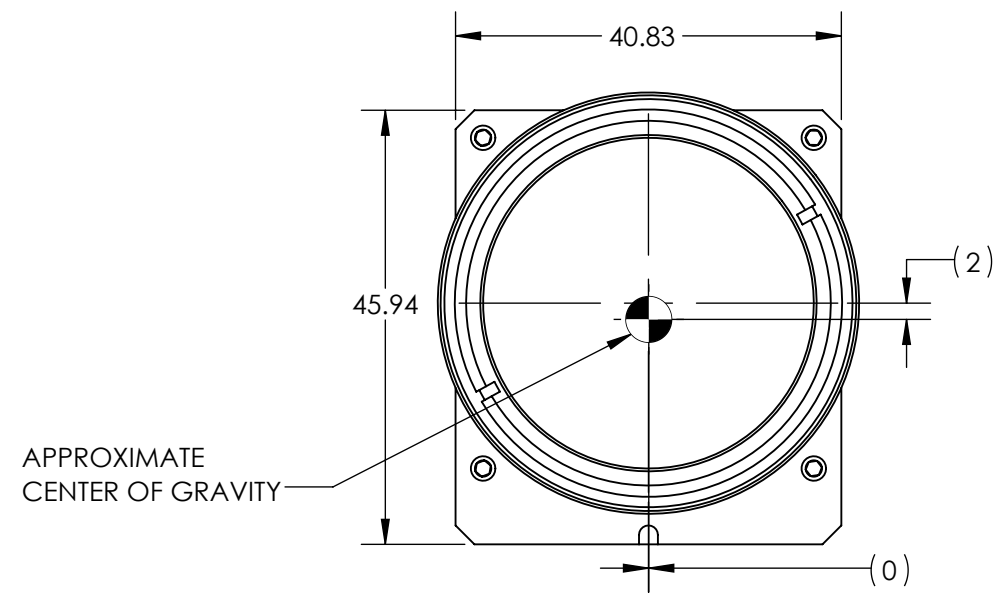
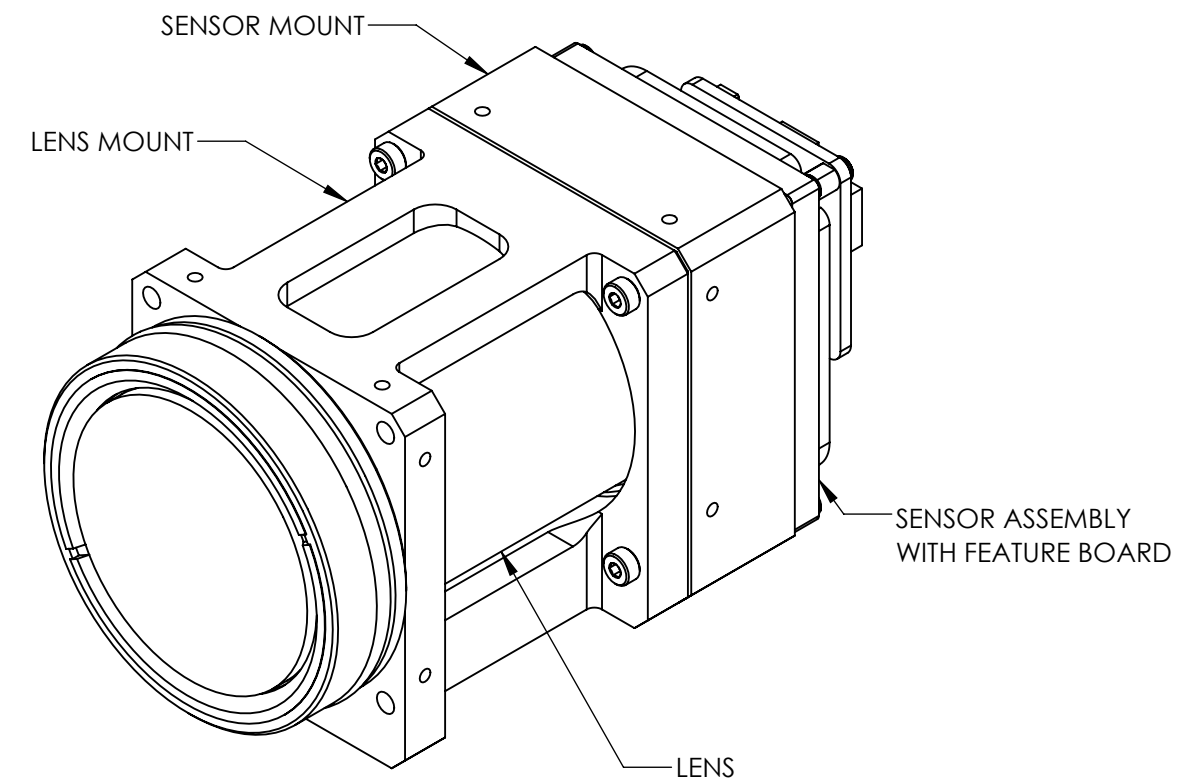
SL-D5-1390-A80
 VIENTO HD10 NO FEATURE BOARD, 80DEG HFOV, 8.5MM
 MASS = 215 GRAMS

Product Export Classification Control Number(ECCN): 60/30Hz 6A003.b.4.b 9Hz: 6A993 This document does not contain export-controlled technology.	UNLESS OTHERWISE SPECIFIED DIM ARE IN MILLIMETERS		PROPRIETARY AND CONFIDENTIAL THE INFORMATION CONTAINED IN THIS DRAWING IS THE SOLE PROPERTY OF SIERRA OLYMPIA TECHNOLOGIES, INC. ANY REPRODUCTION IN PART OR AS A WHOLE WITHOUT THE WRITTEN PERMISSION OF SIERRA OLYMPIA TECHNOLOGIES, INC. IS PROHIBITED. MATERIAL: N/A FINISH: N/A N/A	SIERRA-OLYMPIA TECHNOLOGIES INC. DESCRIPTION: MECHANICAL ICD, VIENTO HD10, 80DEG HFOV, 8.5MM		
	X ± 2.5 mm	ANGLES X ± 1°		SIZE	DRAWN BY:	SHEET 1 OF 8
	X.X ± 0.3 mm	X.X ± 0.5°		B	C. PRICE	
	X.XX ± 0.13 mm			DRAWING NUMBER:	20-70104	Rev. A
THIRD ANGLE PROJECTION						
DO NOT SCALE DRAWING						

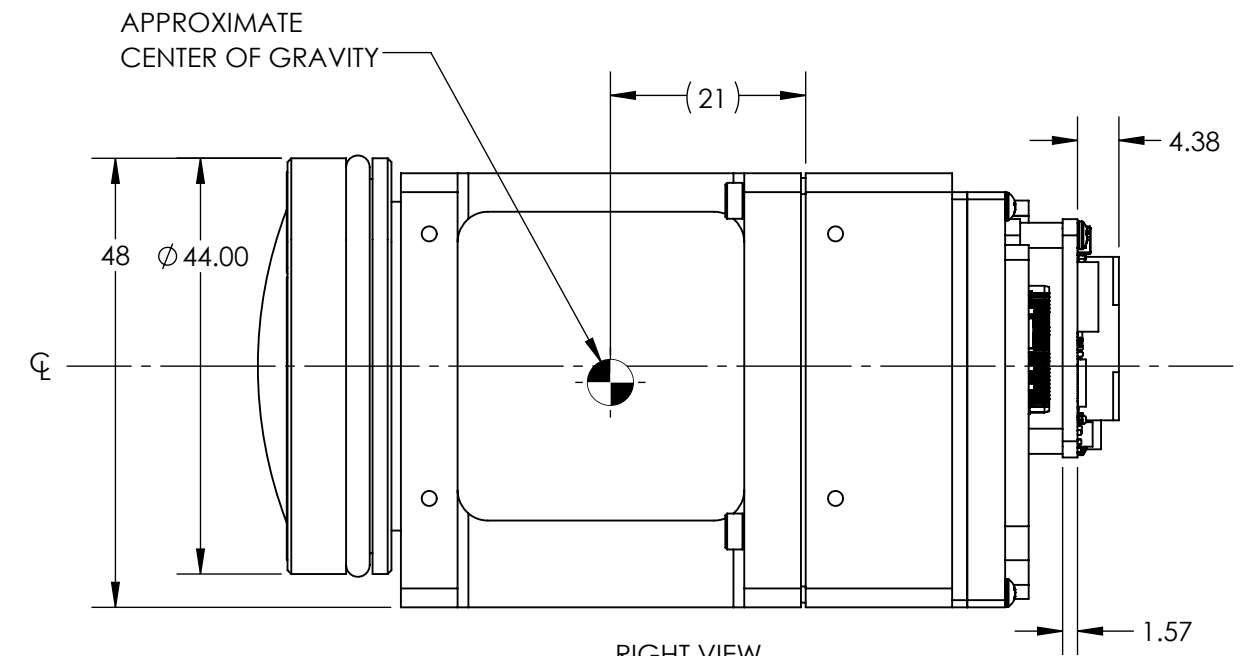
ESTIMATED POWER DRAW IS 2.5W STEADY-STATE.
 CONDUCTIVE OR CONVECTIVE THERMAL DISSIPATION
 IS RECOMMENDED
 FOR ADDITIONAL CONNECTOR INFORMATION REFERENCE
 DRS ELECTRICAL ICD, 1040049 TENUM 1280 ELECTRICAL ICD



TOP VIEW



FRONT VIEW



RIGHT VIEW

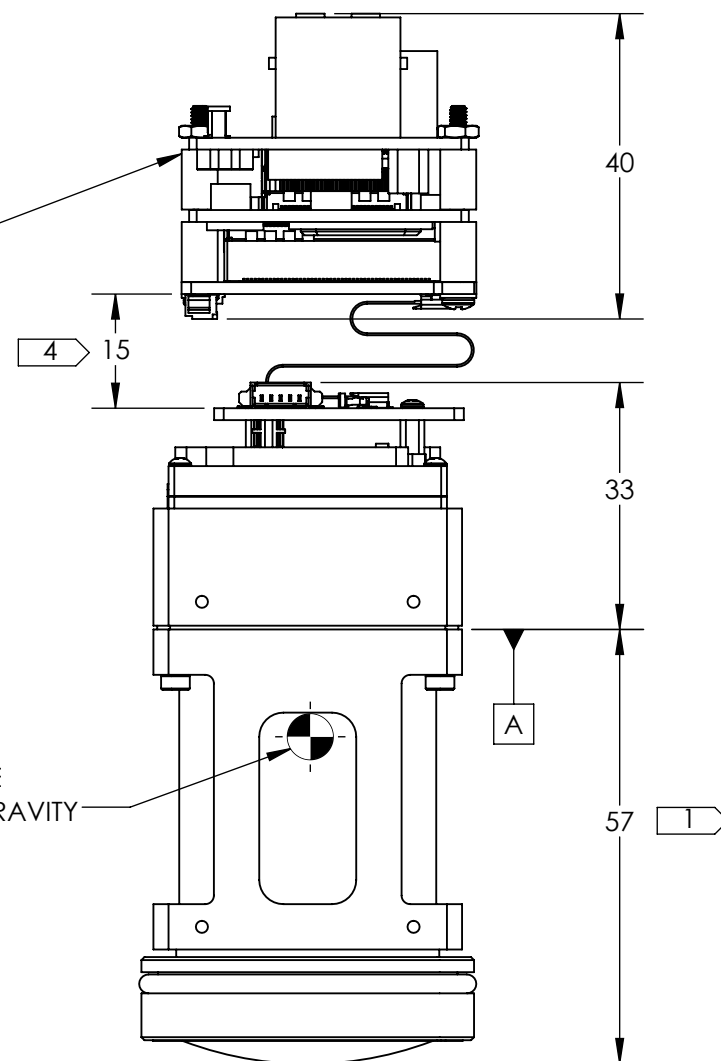
SL-D5-1391-A80
 VIENTO HD10 WITH FEATURE BOARD, 80DEG HFOV, 8.5MM
 MASS = 220 GRAMS

Product Export Classification Control Number(ECCN): 60/30Hz 6A003.b.4.b 9Hz: 6A993 This document does not contain export-controlled technology.	UNLESS OTHERWISE SPECIFIED DIM ARE IN MILLIMETERS		PROPRIETARY AND CONFIDENTIAL THE INFORMATION CONTAINED IN THIS DRAWING IS THE SOLE PROPERTY OF SIERRA OLYMPIA TECHNOLOGIES, INC. ANY REPRODUCTION IN PART OR AS A WHOLE WITHOUT THE WRITTEN PERMISSION OF SIERRA OLYMPIA TECHNOLOGIES, INC. IS PROHIBITED.	SIERRA-OLYMPIA TECHNOLOGIES INC. DESCRIPTION: MECHANICAL ICD, VIENTO HD10, 80DEG HFOV, 8.5MM			
	X ± 2.5 mm X.X ± 0.3 mm X.XX ± 0.13 mm	ANGLES X ± 1° X.X ± 0.5°				MATERIAL:	N/A
	THIRD ANGLE PROJECTION					FINISH:	N/A
DO NOT SCALE DRAWING				DRAWING NUMBER:	20-70104		
				SIZE	B		
				DRAWN BY:	C. PRICE		
					SHEET 2 OF 8		
					Rev. A		

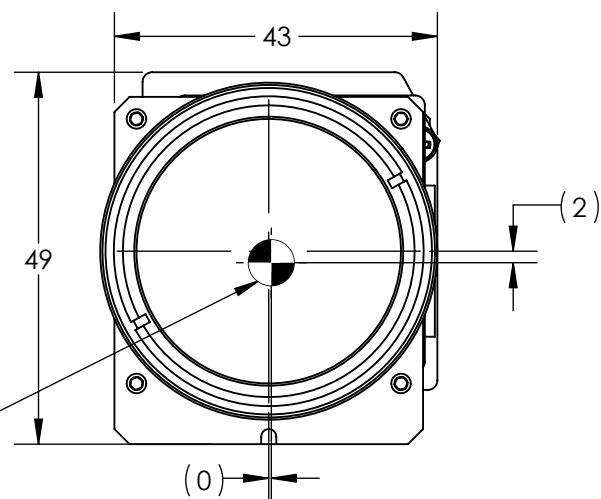
ESTIMATED POWER DRAW IS 4.6W STEADY-STATE.
 CONDUCTIVE OR CONVECTIVE THERMAL DISSIPATION
 IS RECOMMENDED
 FOR ADDITIONAL CONNECTOR INFORMATION REFERENCE
 ELECTRICAL ICD DOC 20-70068

APPROXIMATE
 CENTER OF GRAVITY

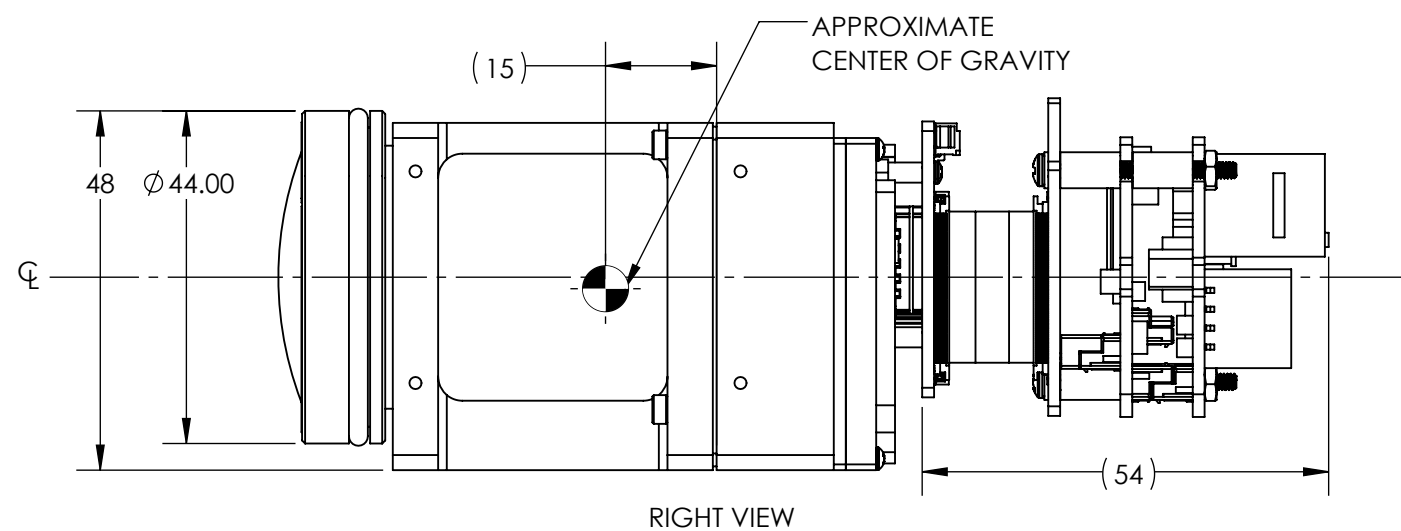
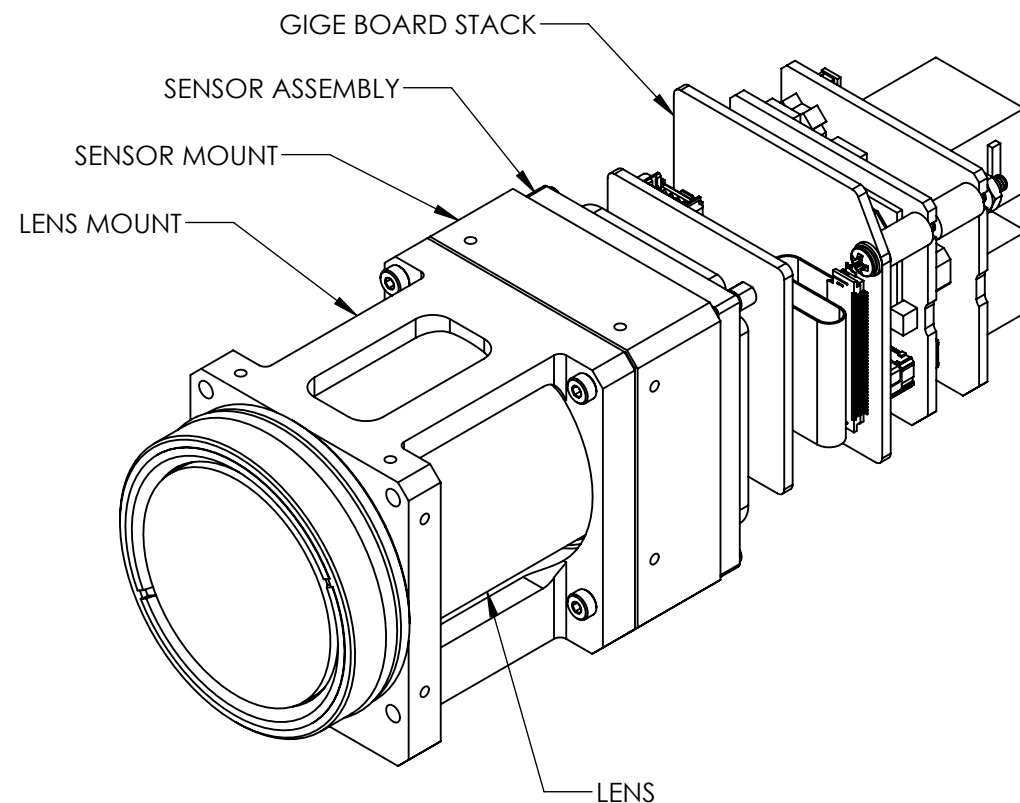
APPROXIMATE
 CENTER OF GRAVITY



TOP VIEW



FRONT VIEW



RIGHT VIEW

SL-D5-1392-A80
 VIENTO HD10 GIGE, 80DEG HFOV, 8.5MM
 MASS = 275 GRAMS

Product Export Classification Control Number(ECCN): 60/30Hz 6A003.b.4.b 9Hz: 6A993	UNLESS OTHERWISE SPECIFIED DIM ARE IN MILLIMETERS		PROPRIETARY AND CONFIDENTIAL THE INFORMATION CONTAINED IN THIS DRAWING IS THE SOLE PROPERTY OF SIERRA OLYMPIA TECHNOLOGIES, INC. ANY REPRODUCTION IN PART OR AS A WHOLE WITHOUT THE WRITTEN PERMISSION OF SIERRA OLYMPIA TECHNOLOGIES, INC. IS PROHIBITED. MATERIAL: N/A
This document does not contain export-controlled technology.	X ± 2.5 mm	ANGLES X ± 1°	
	X.X ± 0.3 mm	X.X ± 0.5°	FINISH: N/A
	X.XX ± 0.13 mm		N/A
	THIRD ANGLE PROJECTION		
	DO NOT SCALE DRAWING		

SIERRA-OLYMPIA TECHNOLOGIES INC.	
DESCRIPTION: MECHANICAL ICD, VIENTO HD10, 80DEG HFOV, 8.5MM	
SIZE	DRAWN BY:
B	C. PRICE
DRAWING NUMBER: 20-70104	
Rev. A	

SIERRA-OLYMPIA TECHNOLOGIES INC.	
DESCRIPTION: MECHANICAL ICD, VIENTO HD10, 80DEG HFOV, 8.5MM	
SIZE	DRAWN BY:
B	C. PRICE
DRAWING NUMBER: 20-70104	
Rev. A	

A

B

C

4

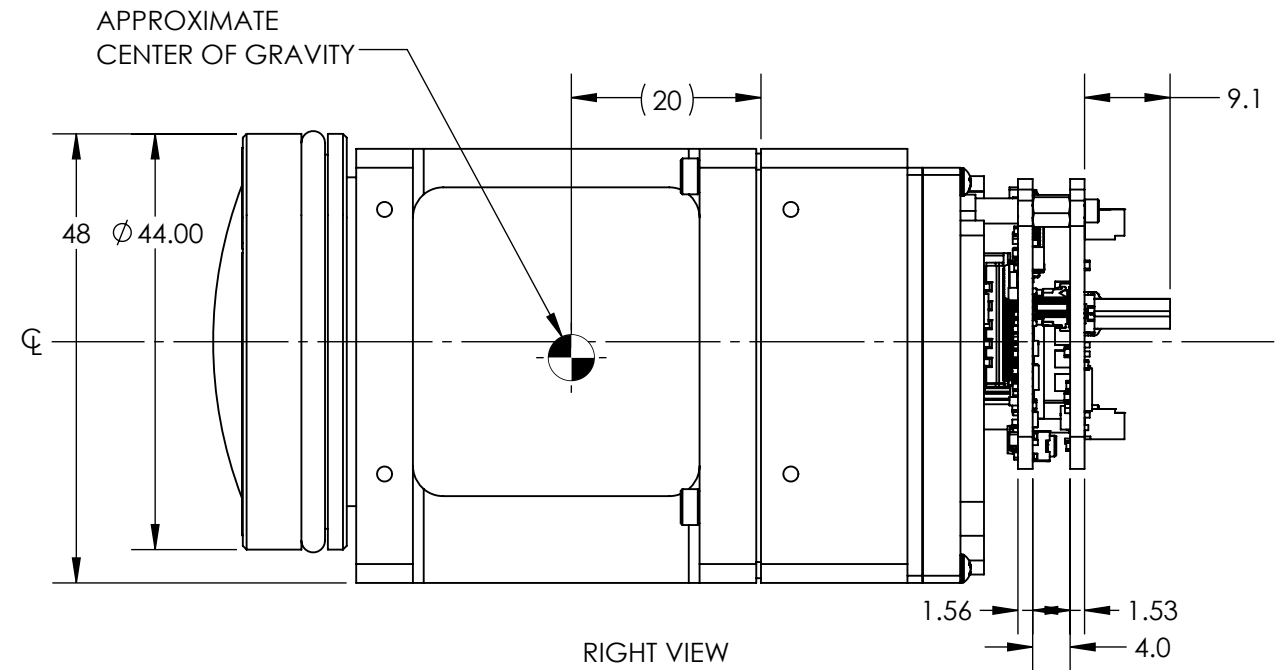
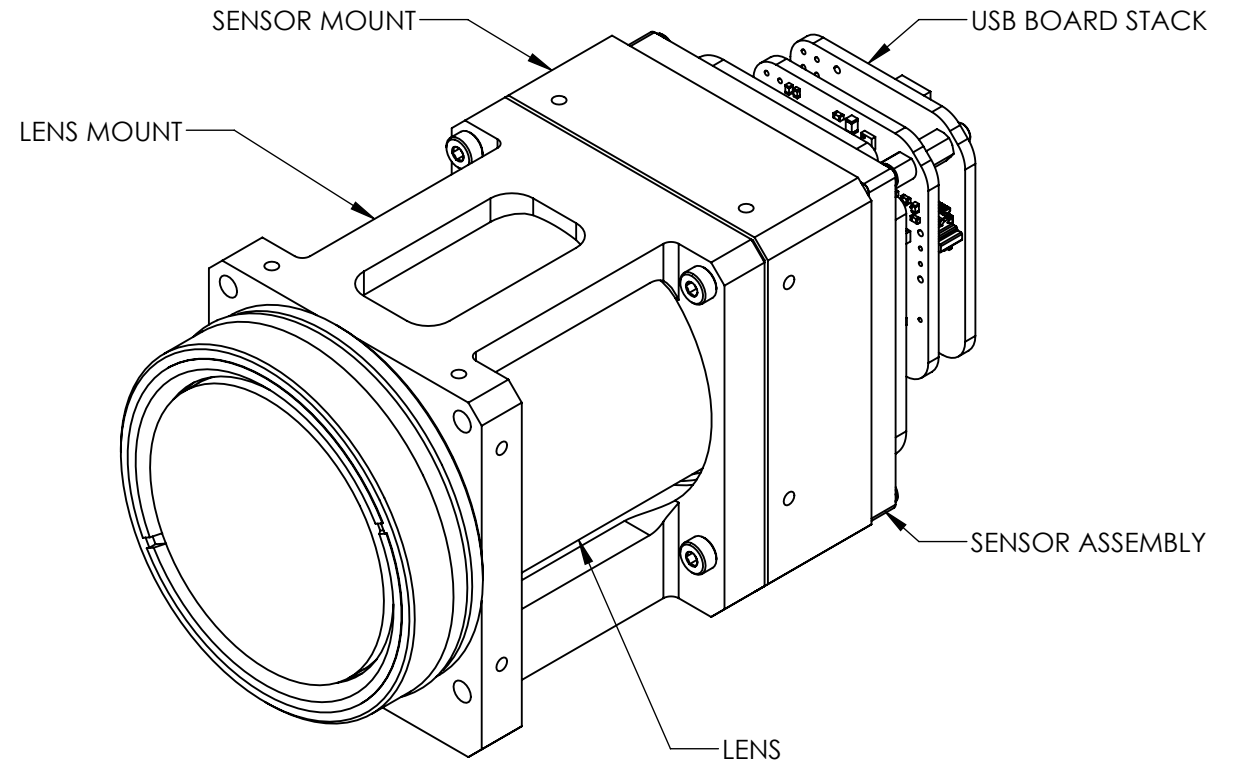
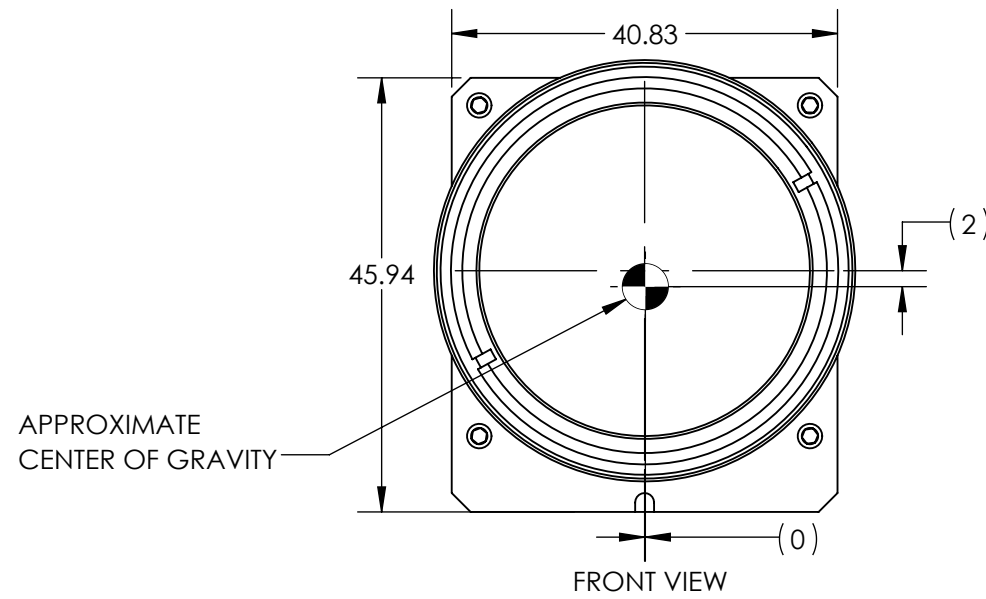
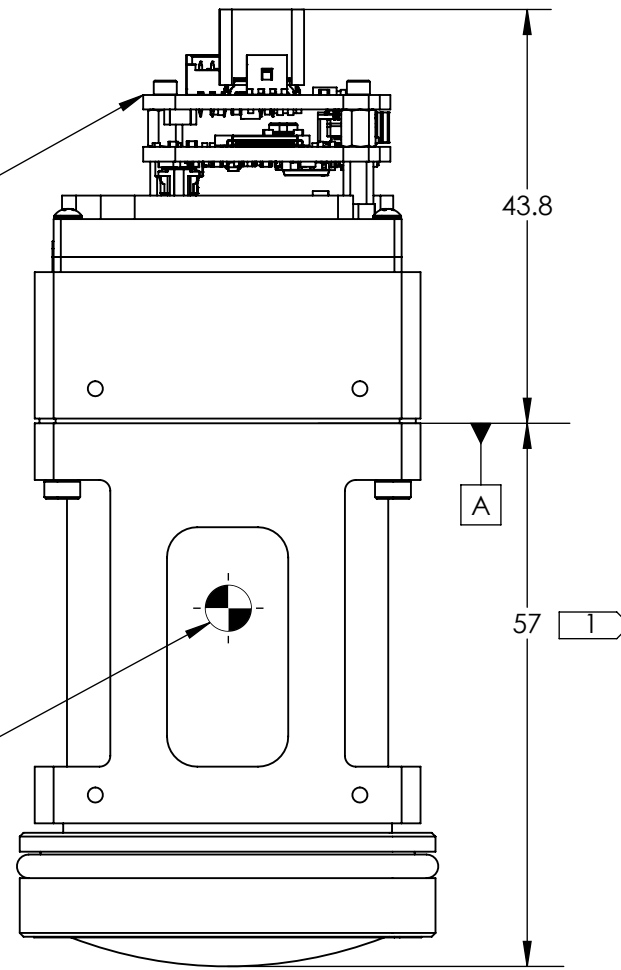
3

2

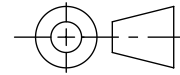
1

ESTIMATED POWER DRAW IS 2.5W STEADY-STATE.
 CONDUCTIVE OR CONVECTIVE THERMAL DISSIPATION
 IS RECOMMENDED
 FOR ADDITIONAL CONNECTOR INFORMATION REFERENCE
 ELECTRICAL ICD DOC S-D1 1285

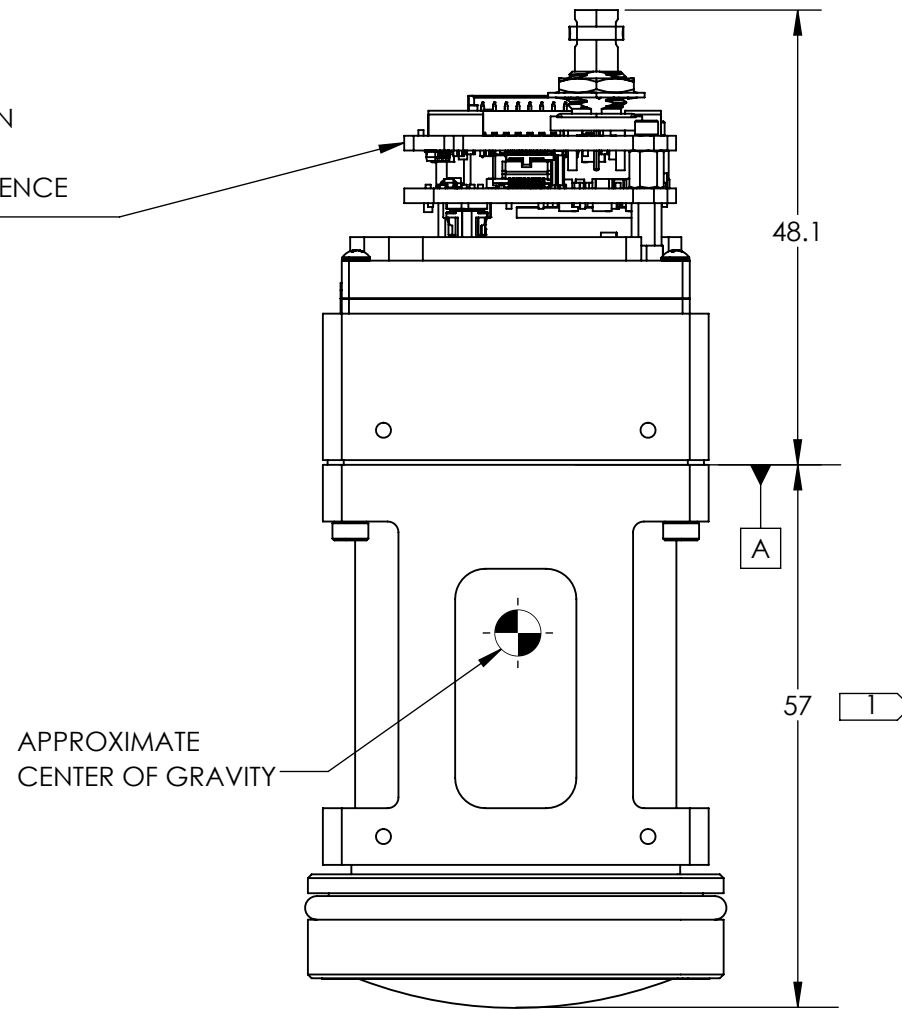
APPROXIMATE
 CENTER OF GRAVITY



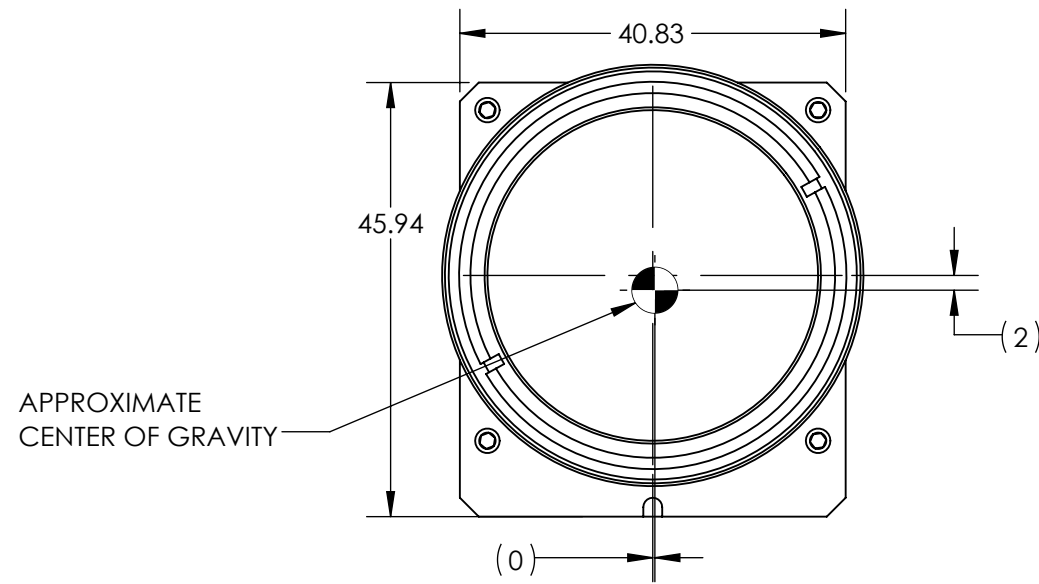
SL-D5-1394-A80
 VIENTO HD10 USB, 80DEG HFOV, 8.5MM
 MASS = 222 GRAMS

Product Export Classification Control Number(ECCN): 60/30Hz 6A003.b.4.b 9Hz: 6A993 This document does not contain export-controlled technology.	UNLESS OTHERWISE SPECIFIED DIM ARE IN MILLIMETERS		PROPRIETARY AND CONFIDENTIAL THE INFORMATION CONTAINED IN THIS DRAWING IS THE SOLE PROPERTY OF SIERRA OLYMPIA TECHNOLOGIES, INC. ANY REPRODUCTION IN PART OR AS A WHOLE WITHOUT THE WRITTEN PERMISSION OF SIERRA OLYMPIA TECHNOLOGIES, INC. IS PROHIBITED. MATERIAL: N/A FINISH: N/A N/A	SIERRA-OLYMPIA TECHNOLOGIES INC.		
	X ± 2.5 mm X.X ± 0.3 mm X.XX ± 0.13 mm	ANGLES X ± 1° X.X ± 0.5°		DESCRIPTION: MECHANICAL ICD, VIENTO HD10, 80DEG HFOV, 8.5MM		
	THIRD ANGLE PROJECTION 			SIZE B	DRAWN BY: C. PRICE	SHEET 4 OF 8
	DO NOT SCALE DRAWING			DRAWING NUMBER: 20-70104	Rev. A	

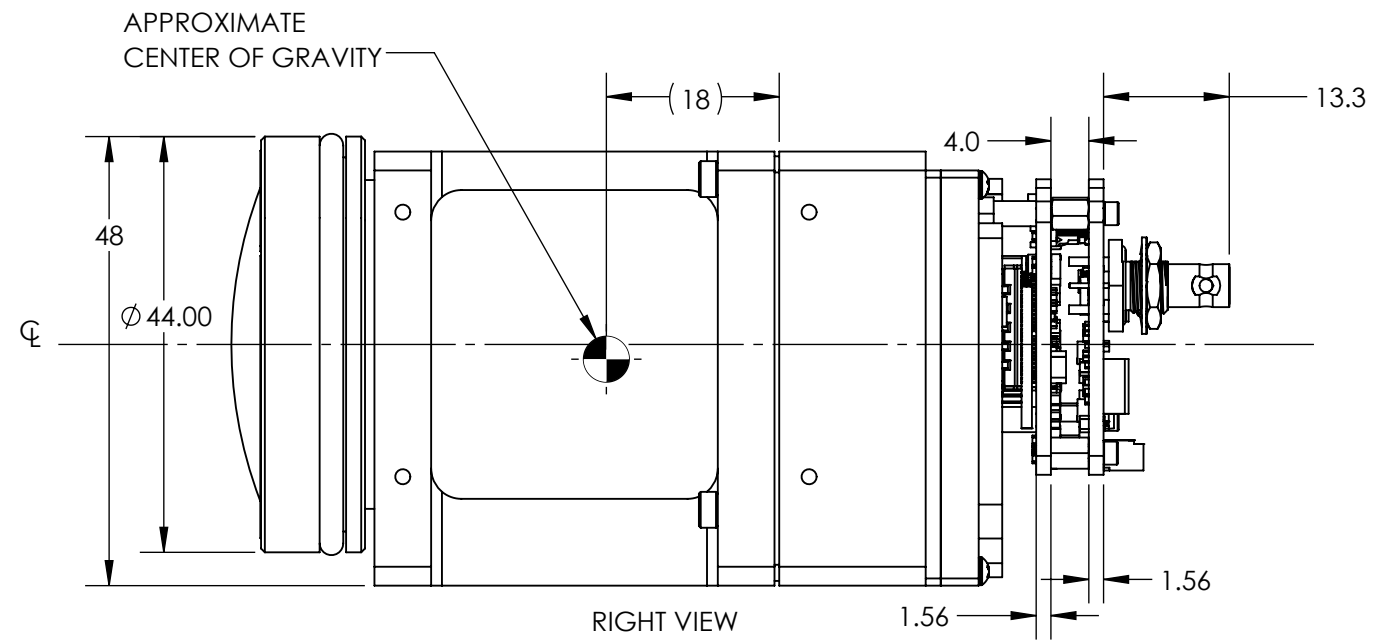
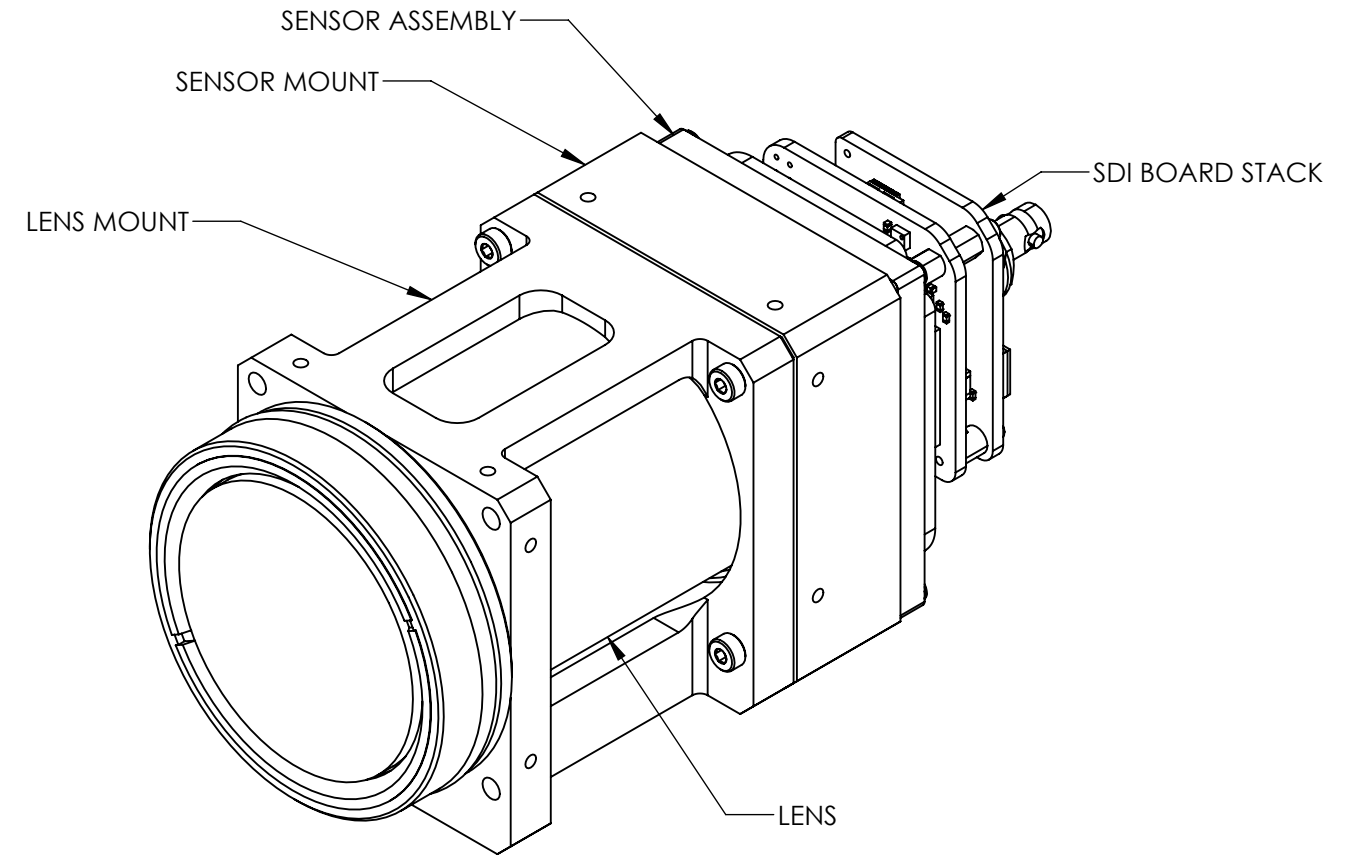
ESTIMATED POWER DRAW IS 4.1W STEADY-STATE.
 CONDUCTIVE OR CONVECTIVE THERMAL DISSIPATION
 IS RECOMMENDED
 FOR ADDITIONAL CONNECTOR INFORMATION REFERENCE
 ELECTRICAL ICD DOC 20-70054



TOP VIEW



FRONT VIEW



RIGHT VIEW

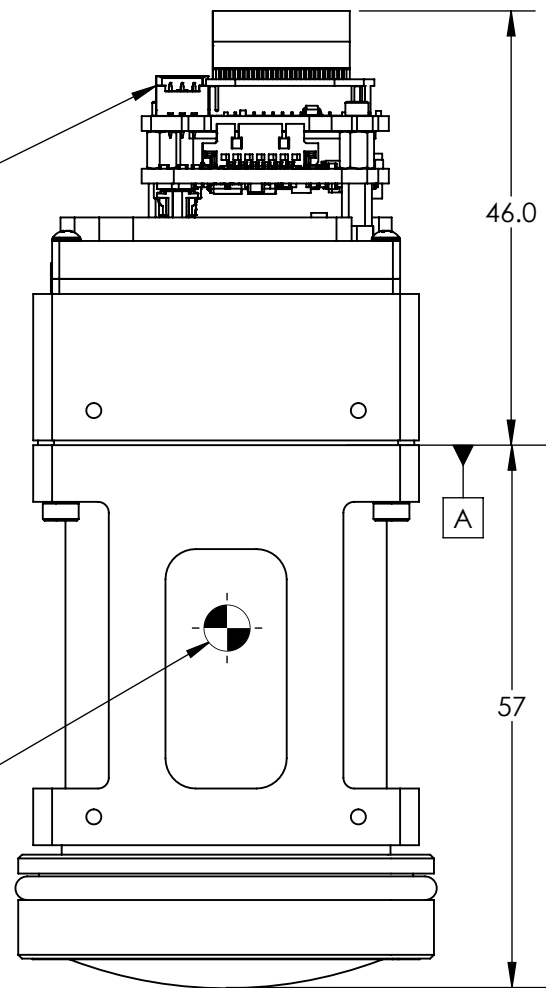
SL-D5-1396-A80
 VIENTO HD10 SDI, 80DEG HFOV, 8.5MM
 MASS = 227 GRAMS

Product Export Classification Control Number(ECCN): 60/30Hz 6A003.b.4.b 9Hz: 6A993 This document does not contain export-controlled technology.	UNLESS OTHERWISE SPECIFIED DIM ARE IN MILLIMETERS		PROPRIETARY AND CONFIDENTIAL THE INFORMATION CONTAINED IN THIS DRAWING IS THE SOLE PROPERTY OF SIERRA OLYMPIA TECHNOLOGIES, INC. ANY REPRODUCTION IN PART OR AS A WHOLE WITHOUT THE WRITTEN PERMISSION OF SIERRA OLYMPIA TECHNOLOGIES, INC. IS PROHIBITED. MATERIAL: N/A FINISH: N/A N/A
	X ± 2.5 mm	ANGLES X ± 1°	
	X.X ± 0.3 mm	X.X ± 0.5°	
	X.XX ± 0.13 mm		
THIRD ANGLE PROJECTION			
DO NOT SCALE DRAWING			



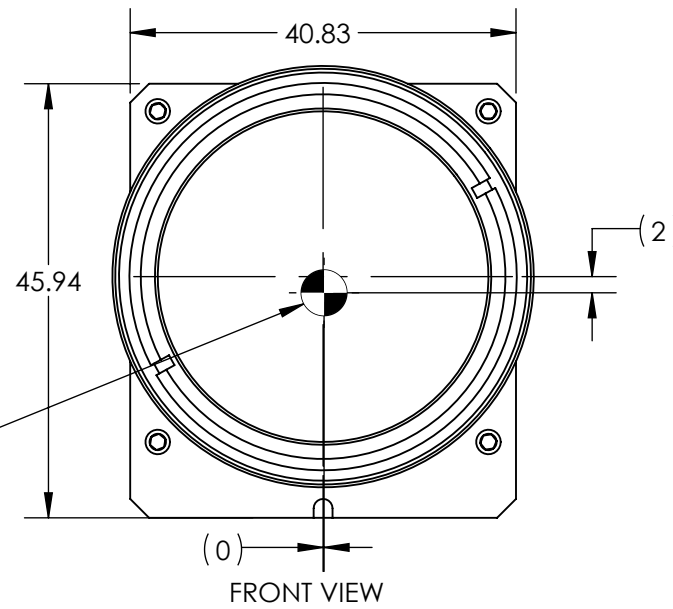
DESCRIPTION: MECHANICAL ICD, VIENTO HD10, 80DEG HFOV, 8.5MM	
SIZE B	DRAWN BY: C. PRICE
DRAWING NUMBER: 20-70104	SHEET 5 OF 8 Rev. A

ESTIMATED POWER DRAW IS 3.1W STEADY-STATE.
 CONDUCTIVE OR CONVECTIVE THERMAL DISSIPATION
 IS RECOMMENDED
 FOR ADDITIONAL CONNECTOR INFORMATION REFERENCE
 ELECTRICAL ICD DOC 20-70060



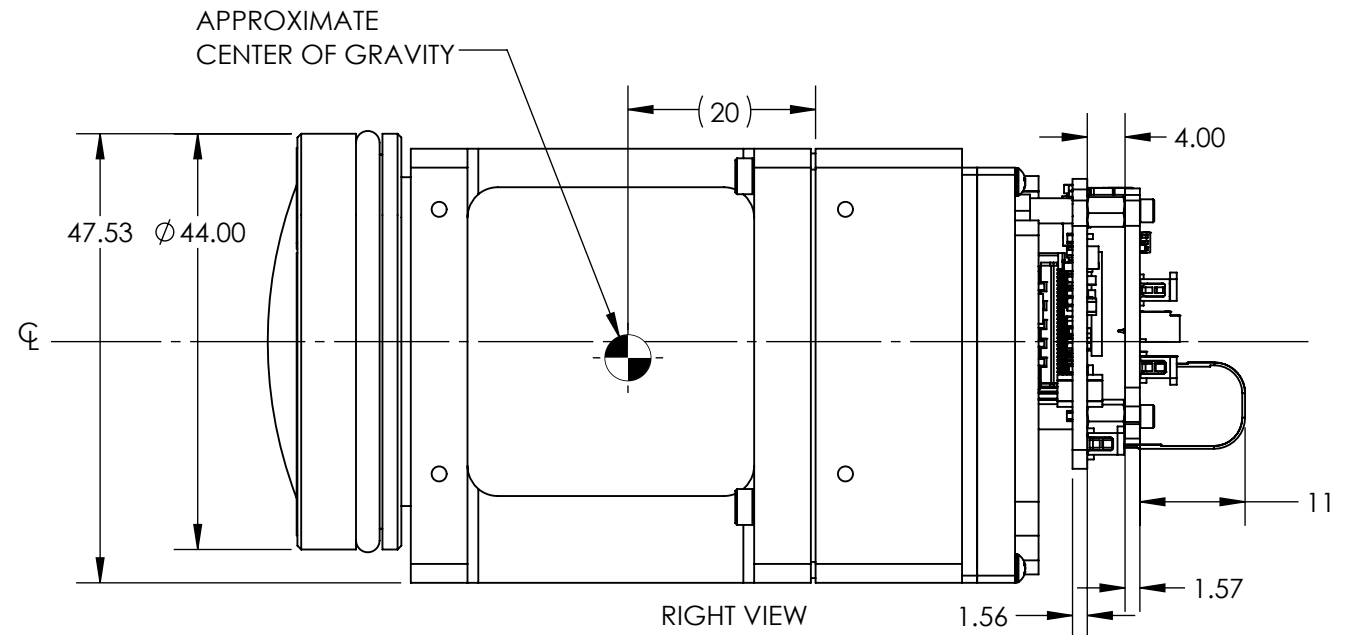
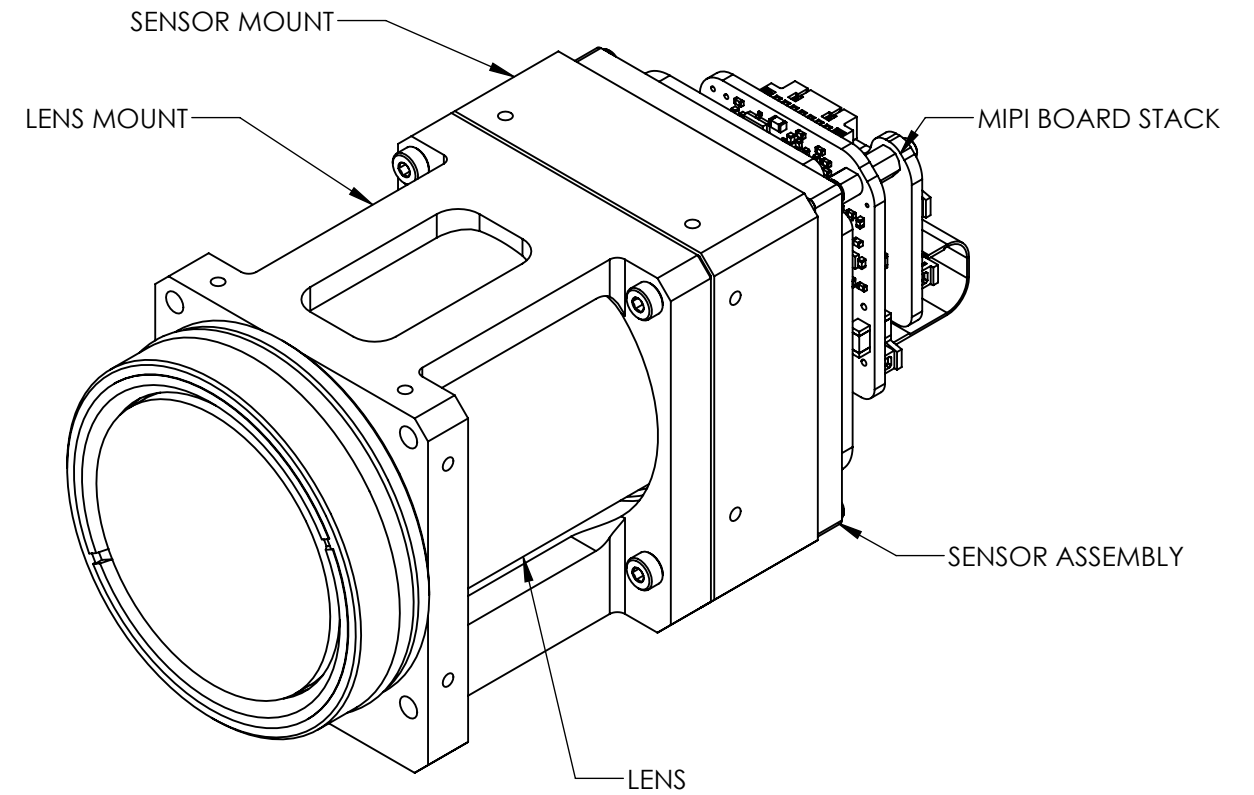
APPROXIMATE
 CENTER OF GRAVITY

TOP VIEW



APPROXIMATE
 CENTER OF GRAVITY

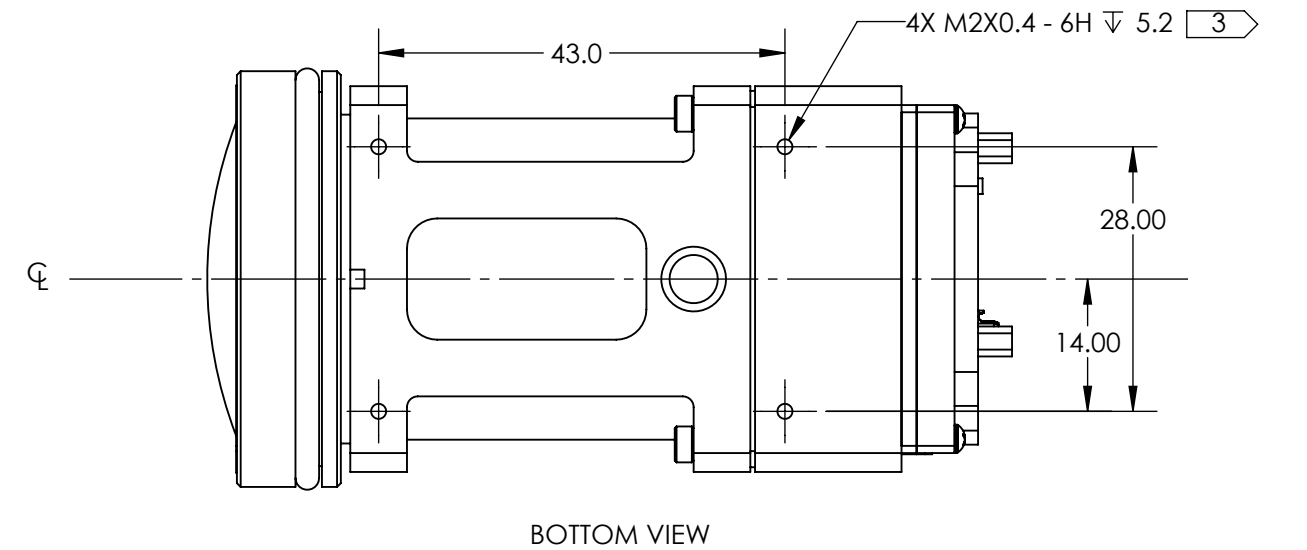
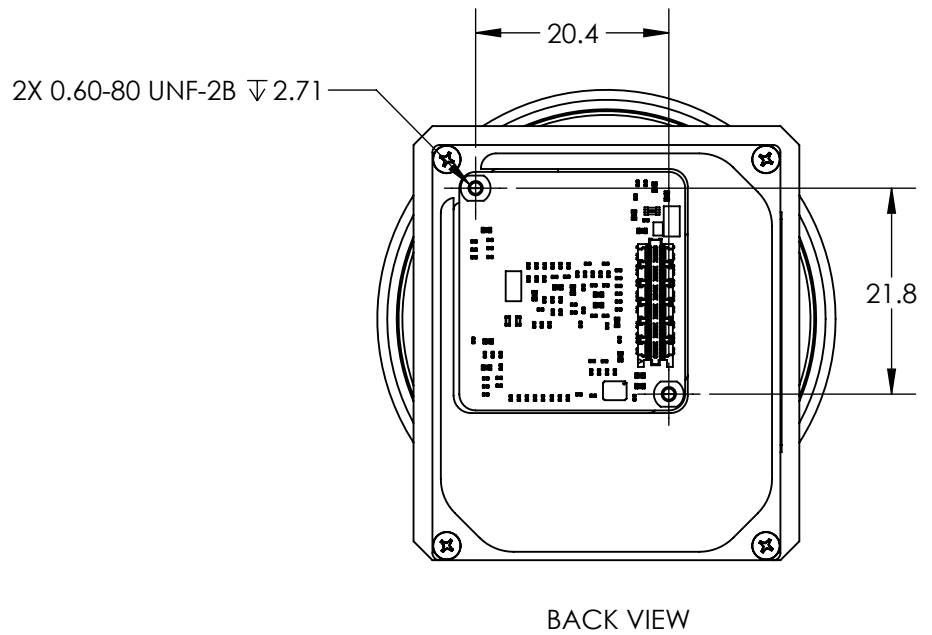
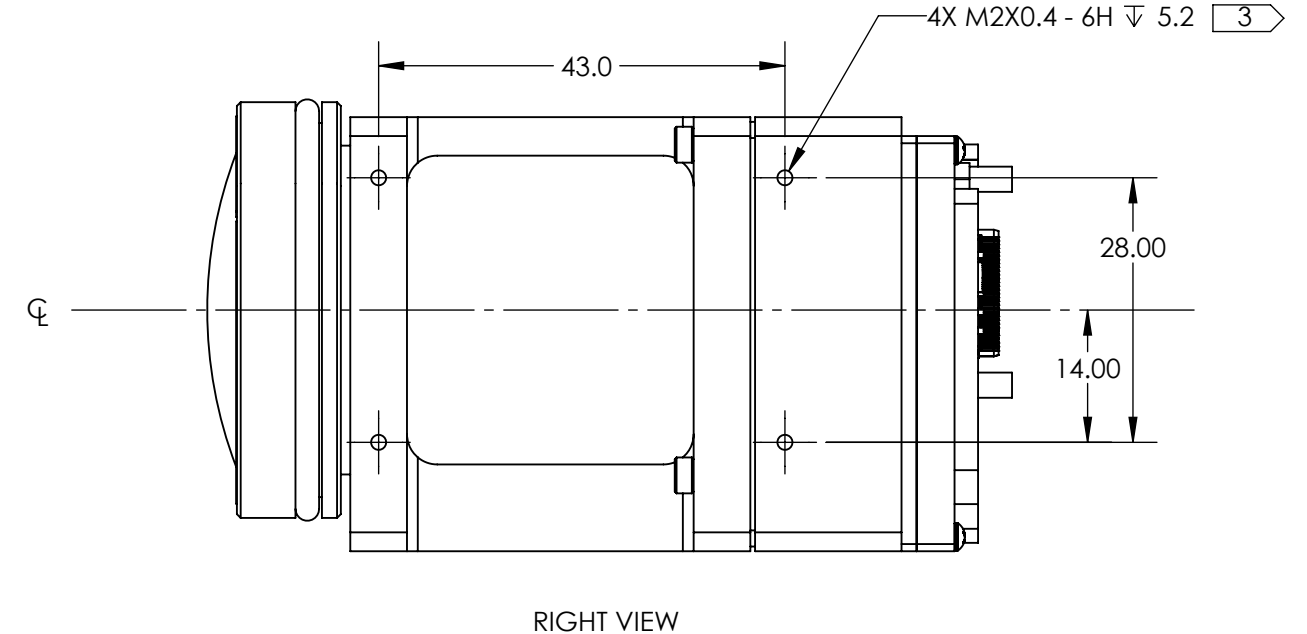
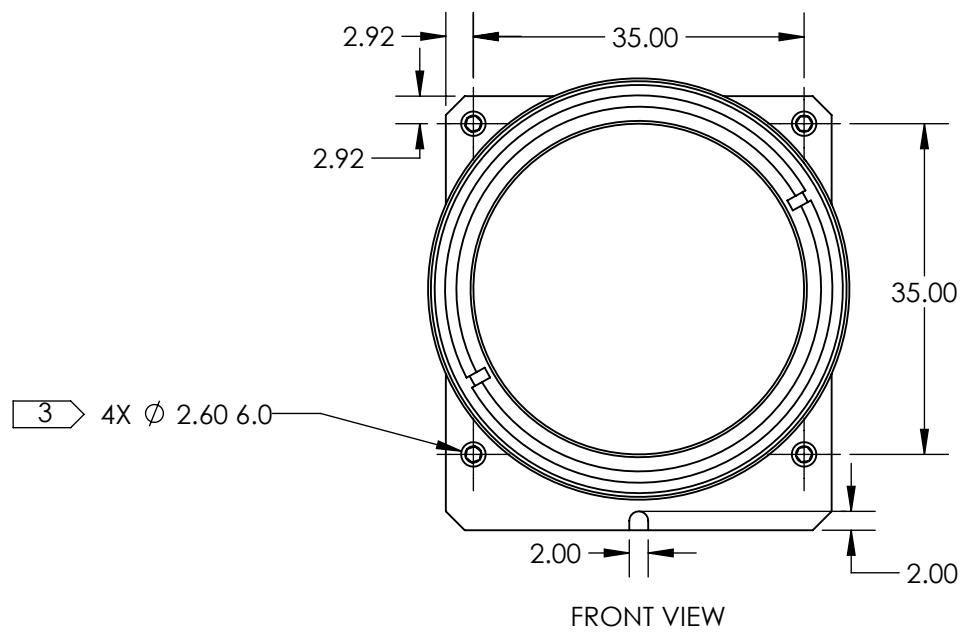
FRONT VIEW



RIGHT VIEW

SL-D5-1398-A80
 VIENTO HD10 MIPI, 80DEG HFOV, 8.5MM
 MASS = 223 GRAMS

Product Export Classification Control Number(ECCN): 60/30Hz 6A003.b.4.b 9Hz: 6A993 This document does not contain export-controlled technology.	UNLESS OTHERWISE SPECIFIED DIM ARE IN MILLIMETERS		PROPRIETARY AND CONFIDENTIAL THE INFORMATION CONTAINED IN THIS DRAWING IS THE SOLE PROPERTY OF SIERRA OLYMPIA TECHNOLOGIES, INC. ANY REPRODUCTION IN PART OR AS A WHOLE WITHOUT THE WRITTEN PERMISSION OF SIERRA OLYMPIA TECHNOLOGIES, INC. IS PROHIBITED. MATERIAL: N/A FINISH: N/A N/A	SIERRA-OLYMPIA TECHNOLOGIES INC. DESCRIPTION: MECHANICAL ICD, VIENTO HD10, 80DEG HFOV, 8.5MM SIZE: B DRAWN BY: C. PRICE SHEET 6 OF 8 DRAWING NUMBER: 20-70104 Rev. A	
	X ± 2.5 mm X.X ± 0.3 mm X.XX ± 0.13 mm	ANGLES X ± 1° X.X ± 0.5°			
	THIRD ANGLE PROJECTION 				
	DO NOT SCALE DRAWING				



Product Export Classification Control Number(ECCN): 60/30Hz 6A003.b.4.b 9Hz: 6A993 This document does not contain export-controlled technology.	UNLESS OTHERWISE SPECIFIED DIM ARE IN MILLIMETERS		PROPRIETARY AND CONFIDENTIAL THE INFORMATION CONTAINED IN THIS DRAWING IS THE SOLE PROPERTY OF SIERRA OLYMPIA TECHNOLOGIES, INC. ANY REPRODUCTION IN PART OR AS A WHOLE WITHOUT THE WRITTEN PERMISSION OF SIERRA OLYMPIA TECHNOLOGIES, INC. IS PROHIBITED.		SIERRA-OLYMPIA TECHNOLOGIES INC.
	X ± 2.5 mm X.X ± 0.3 mm X.XX ± 0.13 mm	ANGLES X ± 1° X.X ± 0.5°	MATERIAL: N/A		
	THIRD ANGLE PROJECTION 		FINISH: N/A		SIZE: B DRAWN BY: C. PRICE
	DO NOT SCALE DRAWING		N/A		DRAWING NUMBER: 20-70104 SHEET 7 OF 8 Rev. A

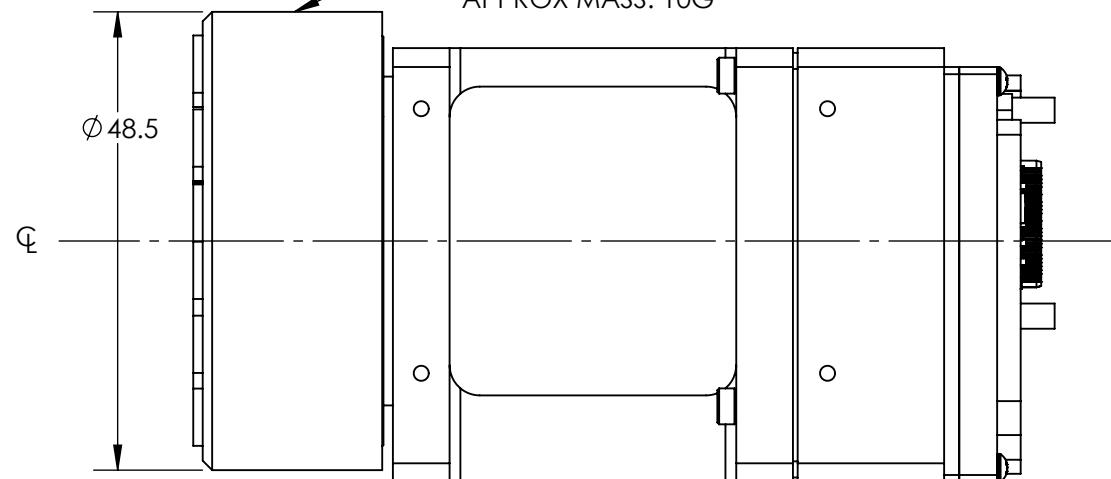
4

3

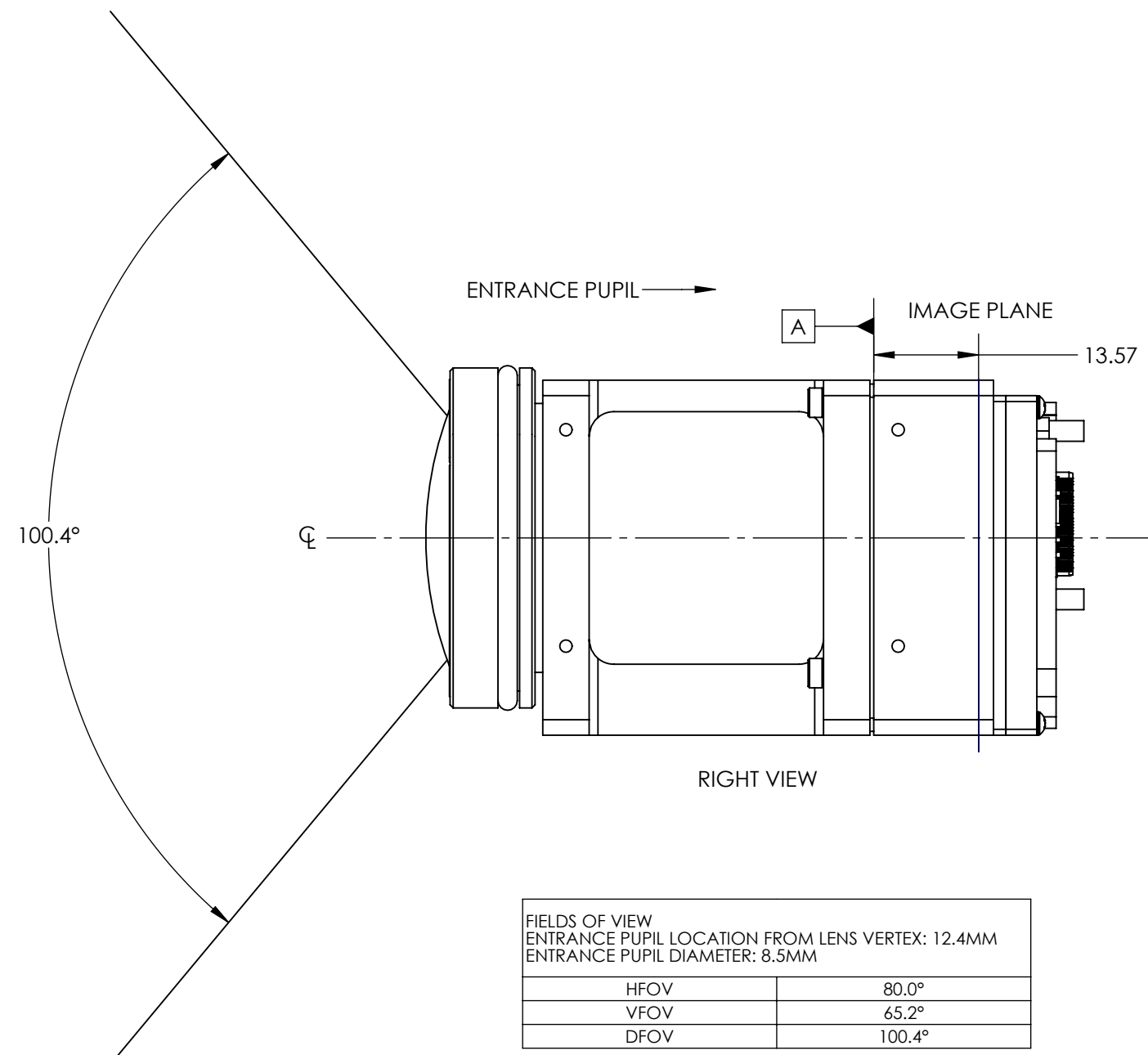
2

1

REMOVABLE LENS CAP PN: 80-20254
APPROX MASS: 10G



RIGHT VIEW WITH REMOVABLE LENS CAP



ENTRANCE PUPIL →

IMAGE PLANE

13.57

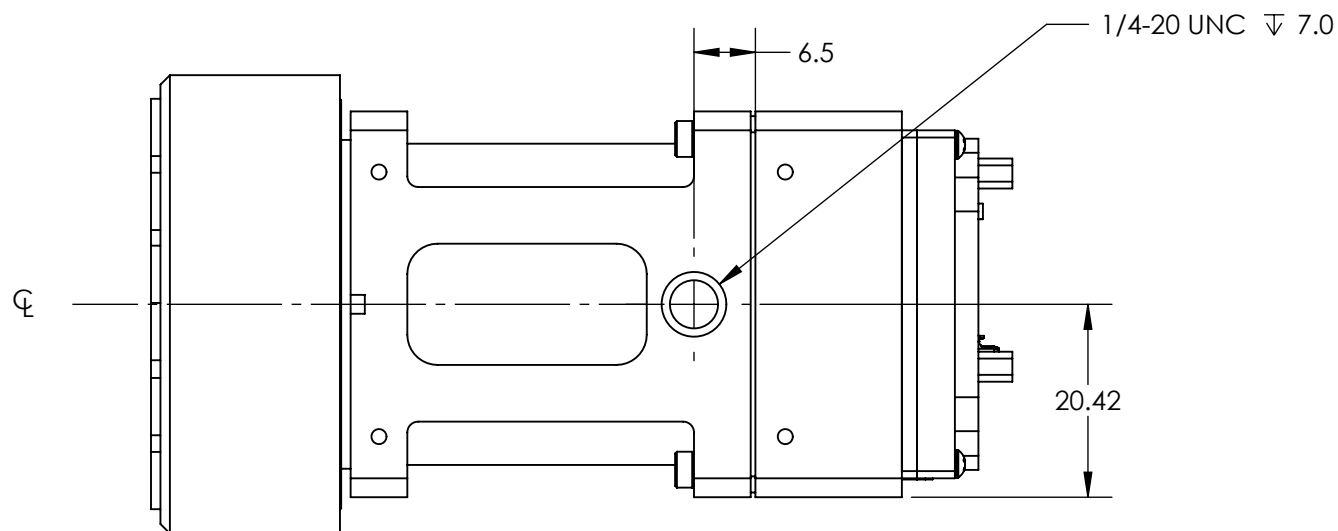
100.4°

Φ

RIGHT VIEW

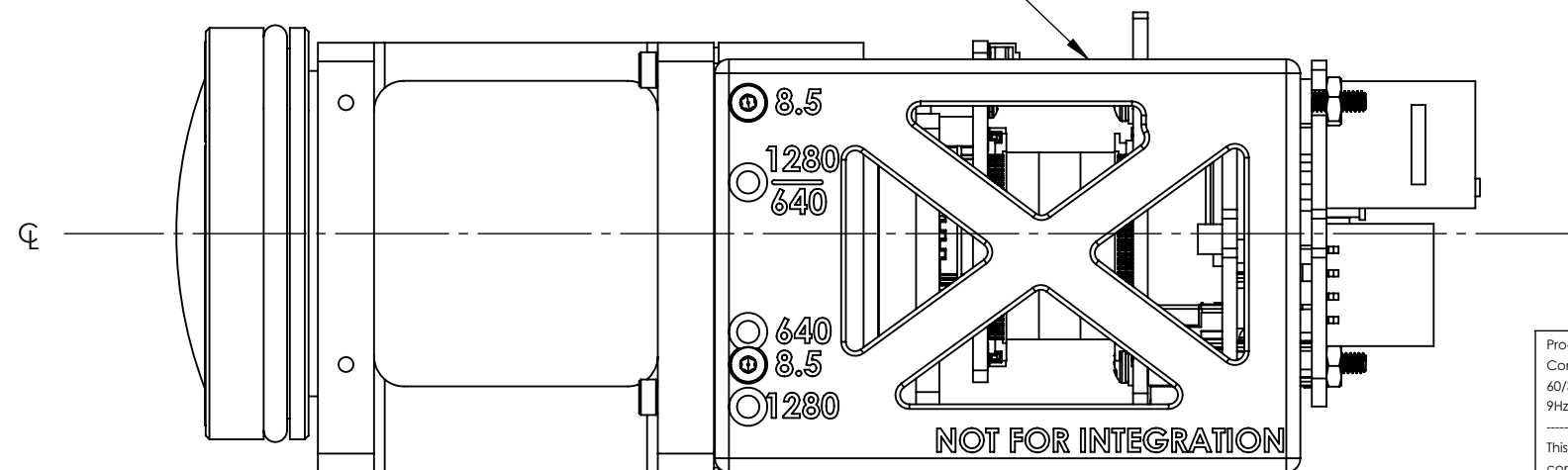
FIELDS OF VIEW
ENTRANCE PUPIL LOCATION FROM LENS VERTEX: 12.4MM
ENTRANCE PUPIL DIAMETER: 8.5MM

HFOV	80.0°
VFOV	65.2°
DFOV	100.4°



BOTTOM VIEW WITH REMOVABLE LENS CAP

REMOVABLE GIGE SHIPPING BRACKET PN: 80-20257
APPROX MASS: 14G



RIGHT VIEW WITH REMOVABLE GIGE SHIPPING BRACKET

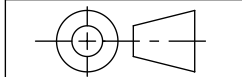
Product Export Classification
Control Number(ECCN):
60/30Hz 6A003.b.4.b
9Hz: 6A993

This document does not
contain export-controlled
technology.

UNLESS OTHERWISE SPECIFIED
DIM ARE IN MILLIMETERS

X ± 2.5 mm	ANGLES
X.X ± 0.3 mm	X ± 1°
X.XX ± 0.13 mm	X.X ± 0.5°

THIRD ANGLE PROJECTION



DO NOT SCALE DRAWING

PROPRIETARY AND CONFIDENTIAL
THE INFORMATION CONTAINED IN THIS DRAWING IS THE SOLE
PROPERTY OF SIERRA OLYMPIA TECHNOLOGIES, INC. ANY
REPRODUCTION IN PART OR AS A WHOLE WITHOUT THE WRITTEN
PERMISSION OF SIERRA OLYMPIA TECHNOLOGIES, INC. IS PROHIBITED.

MATERIAL:
N/A

FINISH:
N/A

N/A

SIERRA-OLYMPIA
TECHNOLOGIES INC.

DESCRIPTION: MECHANICAL ICD,
VIENTO HD10, 80DEG HFOV,
8.5MM

SIZE DRAWN BY:
B C. PRICE SHEET 8 OF 8

DRAWING NUMBER: 20-70104 Rev. A

4

3

2

1