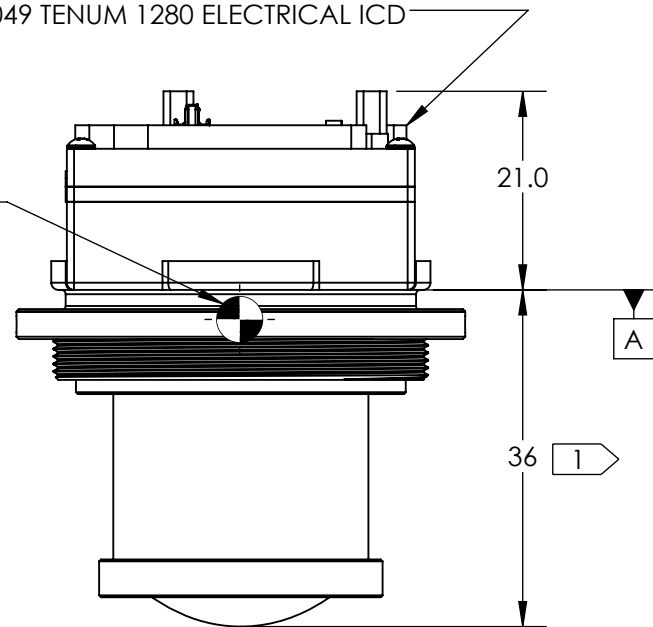


NOTES:

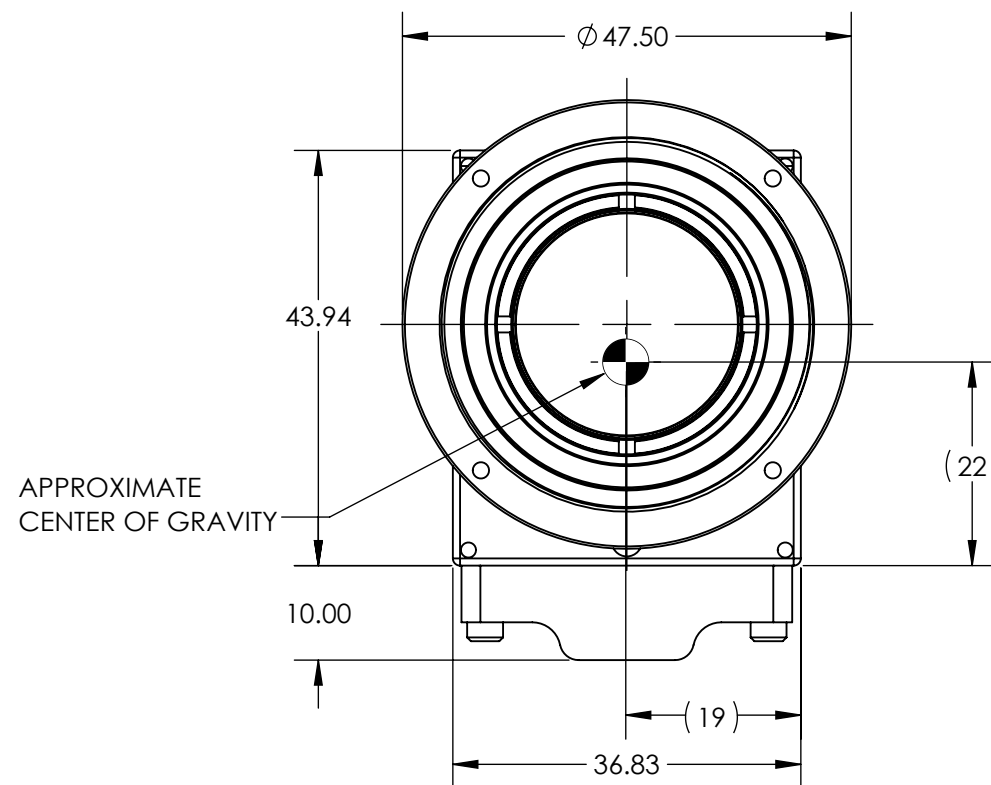
- 1. OVERALL LENGTH DEPENDENT ON FOCUS POSITION, -2MM/+3MM
- 2. OUTSIDE BOARD DIMENSIONS AND HOLE LOCATION TOLERANCE: +/-0.127 MM
- 3. OPTIONAL TRIPOD MOUNT COMPATIBLE IN ALL CONFIGURATIONS
- 4. MOUNTING HOLES ACCESSIBLE IN ALL CONFIGURATIONS. EXCEEDING INDICATED DEPTH MAY RESULT DAMAGE TO CAMERA.
- 5. RECOMMENDED WINDOW VERTICAL TILT ANGLE: 16.2°
- 6. SUGGESTED DRS MOUNTING INFO:
 BULKHEAD MOUNT PANEL THICKNESS 0.095IN (MIN). BULKHEAD MOUNT RETAINER TORQUE 50 IN-LBS. BULKHEAD MOUNT HOLE SIZE 1.576 ± 0.03 IN. BULKHEAD O-RING 70 DUROMETER SHORE A AS568A-028

ESTIMATED POWER DRAW IS 2.3W STEADY-STATE.
 CONDUCTIVE OR CONVECTIVE THERMAL DISSIPATION IS RECOMMENDED
 FOR ADDITIONAL CONNECTOR INFORMATION REFERENCE DRS ELECTRICAL ICD, 1040049 TENUM 1280 ELECTRICAL ICD

APPROXIMATE CENTER OF GRAVITY

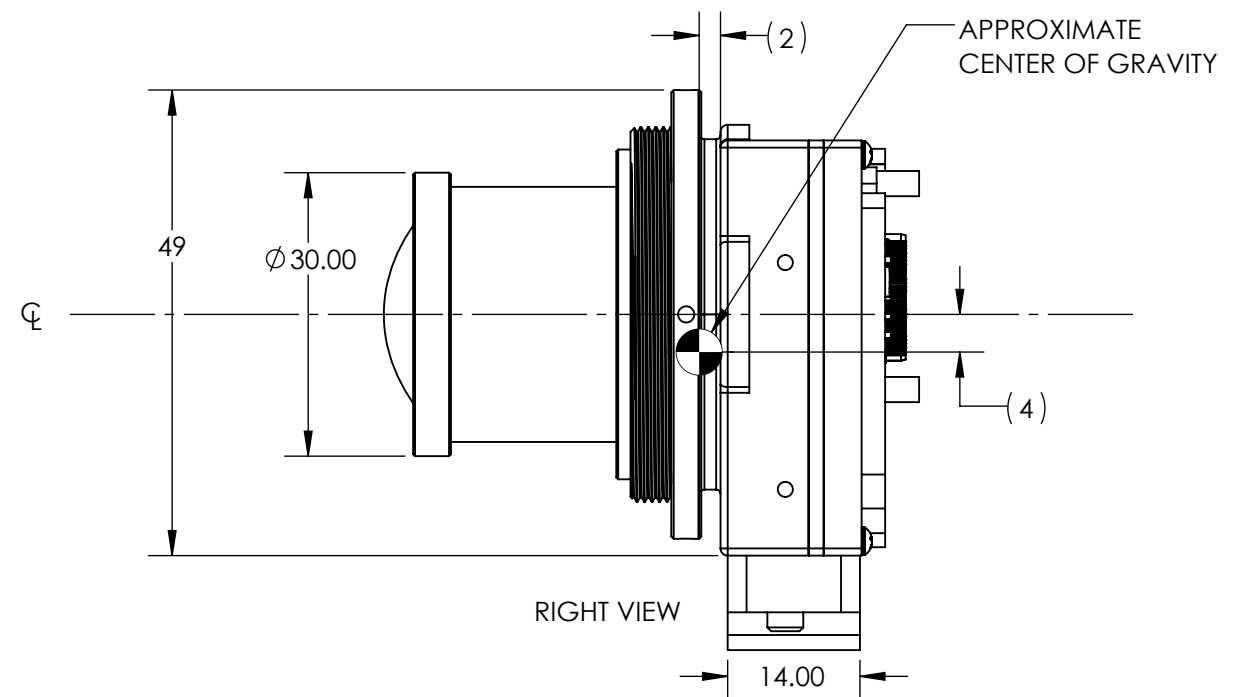
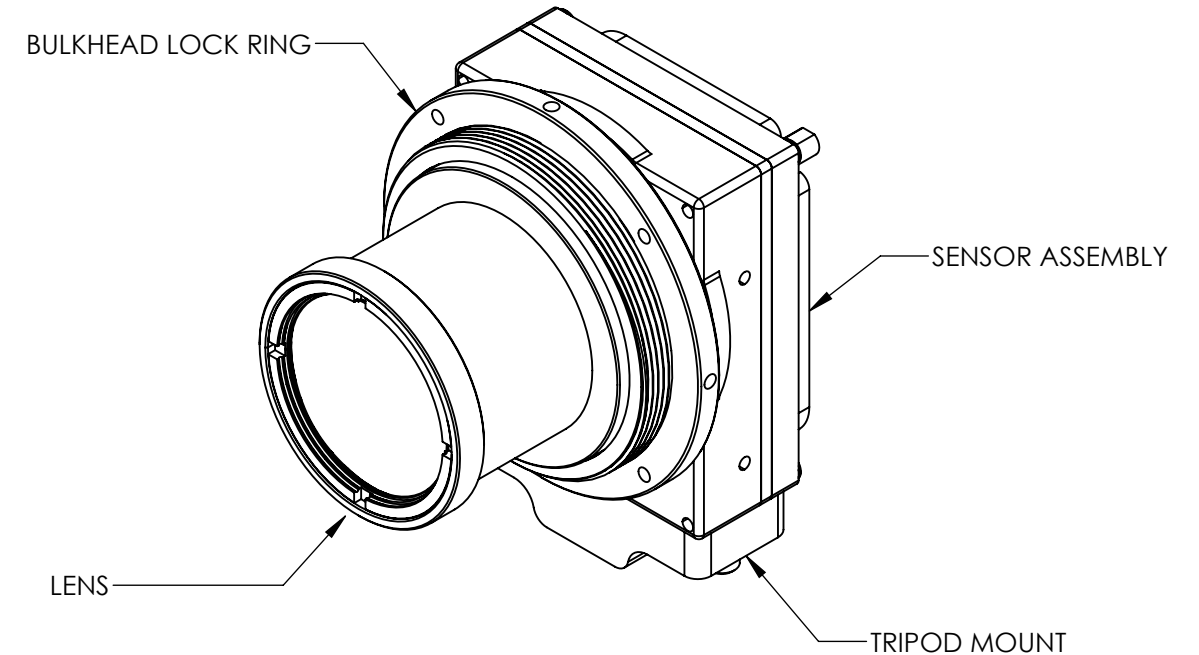


TOP VIEW



FRONT VIEW

REVISIONS					
ZONE	REV.	DESCRIPTION	ECO	DATE	ENGINEER
	A	INITIAL RELEASE	1951	2026-01-06	M. SCOTT



RIGHT VIEW

SL-D5-1320-A40
 VIENTO HD10 NO FEATURE BOARD, LM, 40DEG HFOV, 18MM
 MASS = 121 GRAMS

Product Export Classification Control Number(ECCN): 60/30Hz 6A003.b.4.b 9Hz: 6A993
 This document does not contain export-controlled technology.

UNLESS OTHERWISE SPECIFIED DIM ARE IN MILLIMETERS	
X ± 2.5 mm	ANGLES X ± 1°
X.X ± 0.3 mm	X.X ± 0.5°
X.XX ± 0.13 mm	
THIRD ANGLE PROJECTION	
DO NOT SCALE DRAWING	

PROPRIETARY AND CONFIDENTIAL
 THE INFORMATION CONTAINED IN THIS DRAWING IS THE SOLE PROPERTY OF SIERRA OLYMPIA TECHNOLOGIES, INC. ANY REPRODUCTION IN PART OR AS A WHOLE WITHOUT THE WRITTEN PERMISSION OF SIERRA OLYMPIA TECHNOLOGIES, INC. IS PROHIBITED.

MATERIAL: N/A

FINISH: N/A

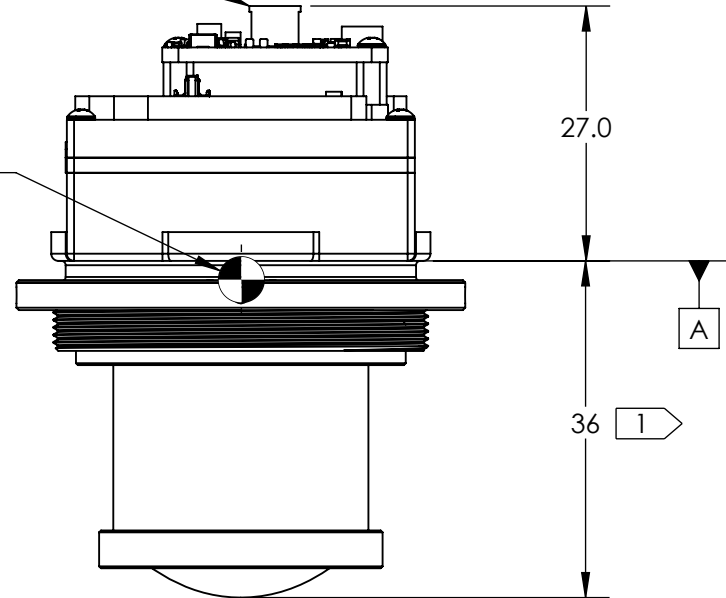
N/A



DESCRIPTION: MECHANICAL ICD, VIENTO HD10, 40DEG HFOV, 18MM	
SIZE B	DRAWN BY: M. SCOTT
DRAWING NUMBER: 20-70113	SHEET 1 OF 8 Rev. A

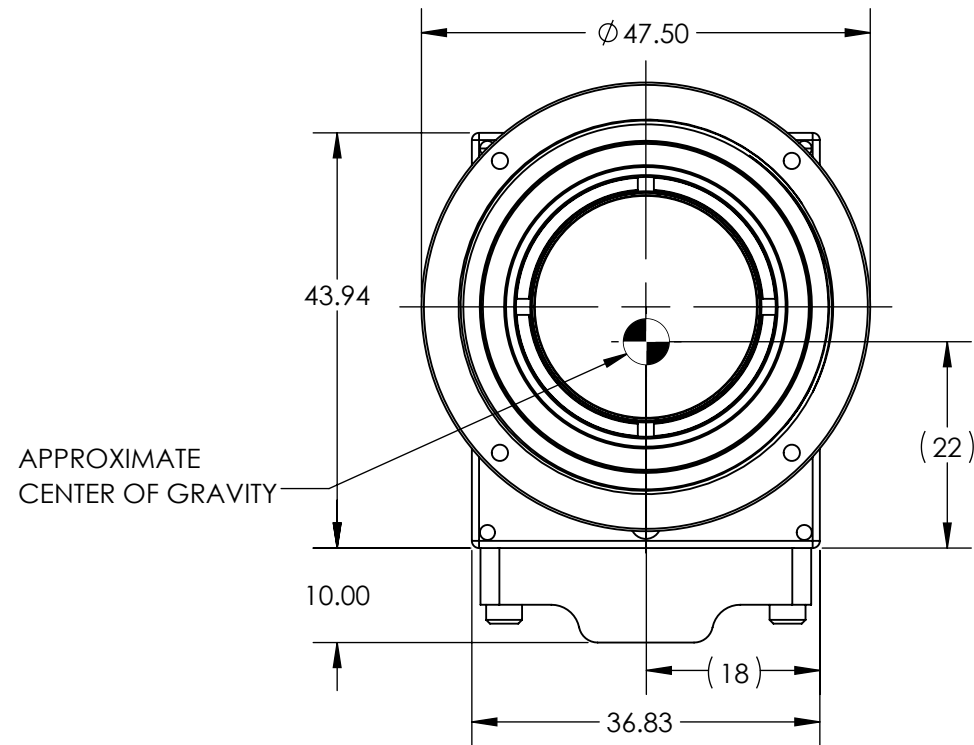
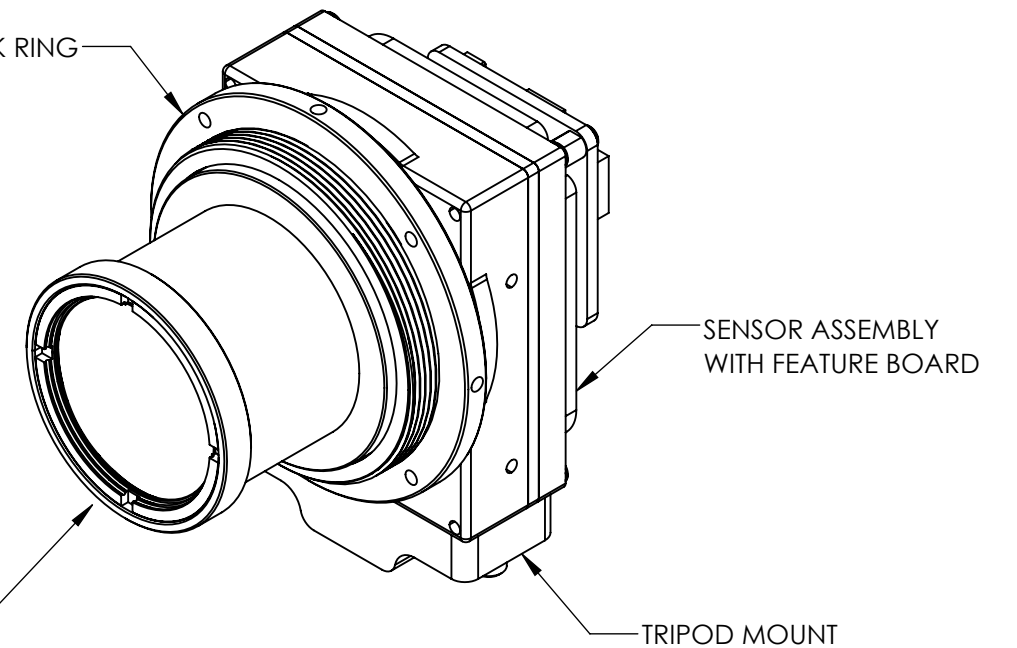
ESTIMATED POWER DRAW IS 2.5W STEADY-STATE.
 CONDUCTIVE OR CONVECTIVE THERMAL DISSIPATION
 IS RECOMMENDED
 FOR ADDITIONAL CONNECTOR INFORMATION REFERENCE
 DRS ELECTRICAL ICD, 1040049 TENUM 1280 ELECTRICAL ICD

APPROXIMATE
 CENTER OF GRAVITY

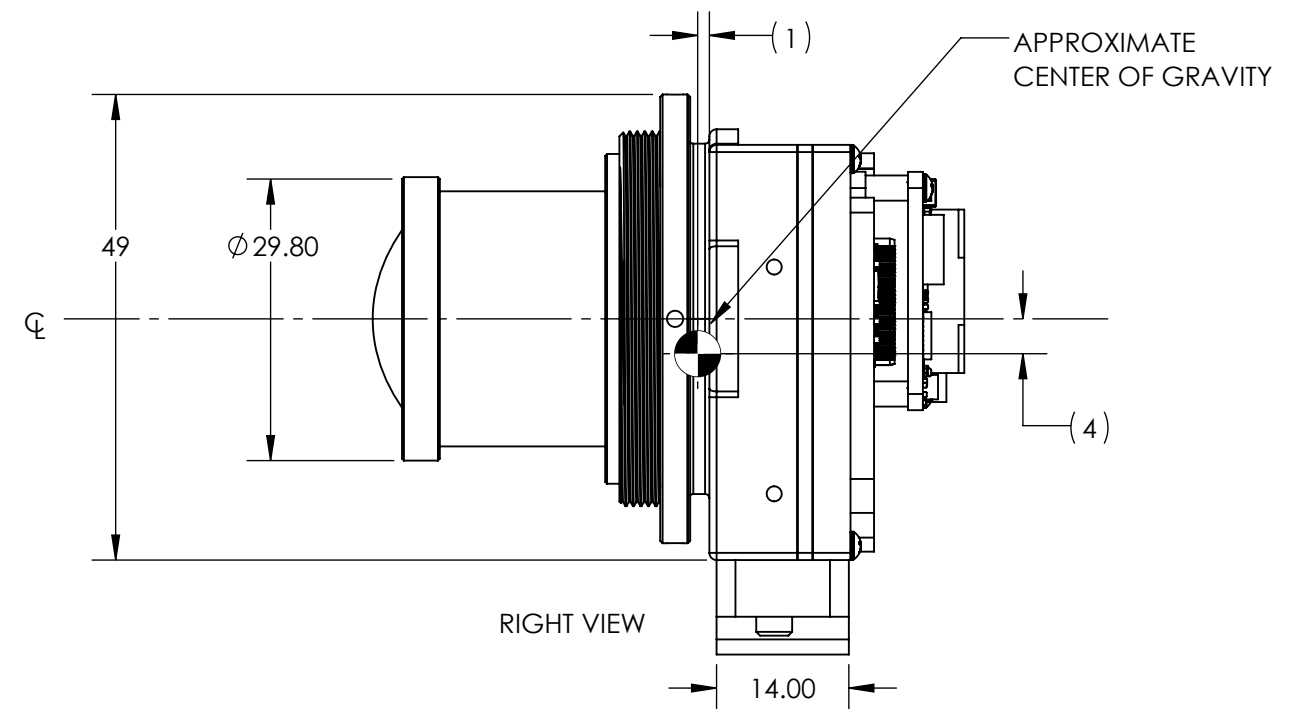


TOP VIEW

BULKHEAD LOCK RING



FRONT VIEW



RIGHT VIEW

SL-D5-1321-A40
 VIENTO HD10 WITH FEATURE BOARD, LM, 40DEG HFOV, 18MM
 MASS = 126 GRAMS

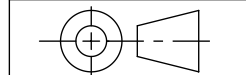
Product Export Classification
 Control Number(ECCN):
 60/30Hz 6A003.b.4.b
 9Hz: 6A993

This document does not
 contain export-controlled
 technology.

UNLESS OTHERWISE SPECIFIED
 DIM ARE IN MILLIMETERS

X ± 2.5 mm	ANGLES X ± 1°
X.X ± 0.3 mm	X.X ± 0.5°
X.XX ± 0.13 mm	

THIRD ANGLE PROJECTION



DO NOT SCALE DRAWING

PROPRIETARY AND CONFIDENTIAL
 THE INFORMATION CONTAINED IN THIS DRAWING IS THE SOLE
 PROPERTY OF SIERRA OLYMPIA TECHNOLOGIES, INC. ANY
 REPRODUCTION IN PART OR AS A WHOLE WITHOUT THE WRITTEN
 PERMISSION OF SIERRA OLYMPIA TECHNOLOGIES, INC. IS PROHIBITED.

MATERIAL:
 N/A

FINISH:
 N/A

N/A

SIERRA-OLYMPIA
 TECHNOLOGIES INC.

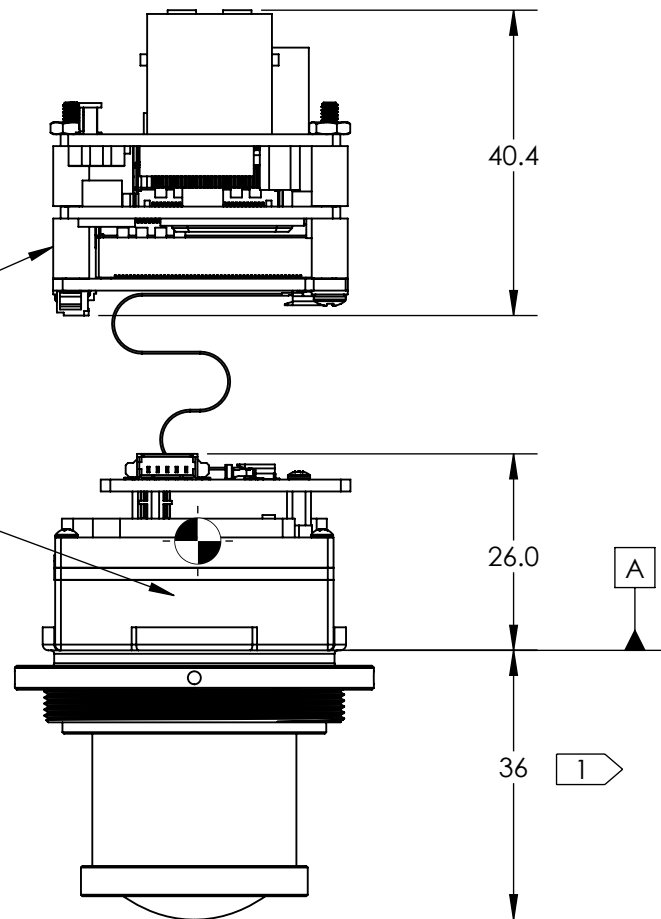
DESCRIPTION:
 MECHANICAL ICD, VIENTO HD10,
 40DEG HFOV, 18MM

SIZE: **B** DRAWN BY:
 M. SCOTT SHEET 2 OF 8

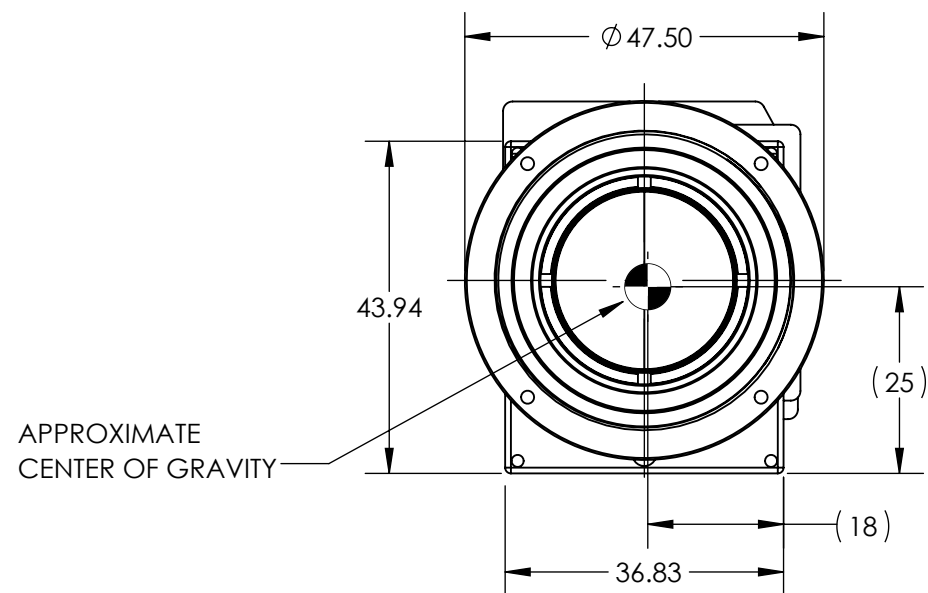
DRAWING NUMBER:
 20-70113 Rev. A

ESTIMATED POWER DRAW IS 4.6W STEADY-STATE.
 CONDUCTIVE OR CONVECTIVE THERMAL DISSIPATION
 IS RECOMMENDED
 FOR ADDITIONAL CONNECTOR INFORMATION REFERENCE
 ELECTRICAL ICD DOC 20-70068

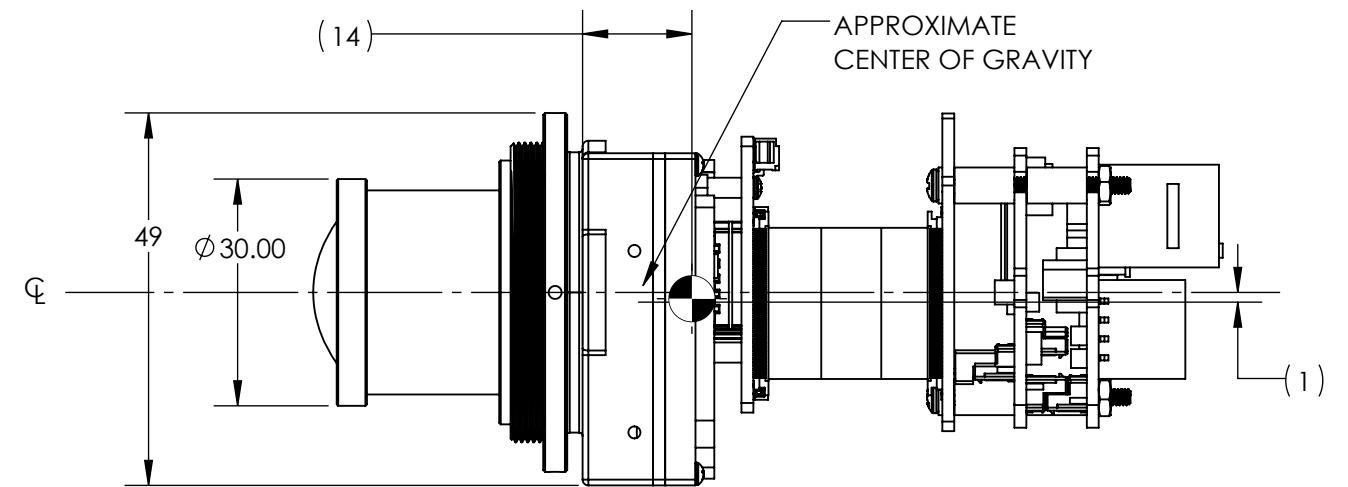
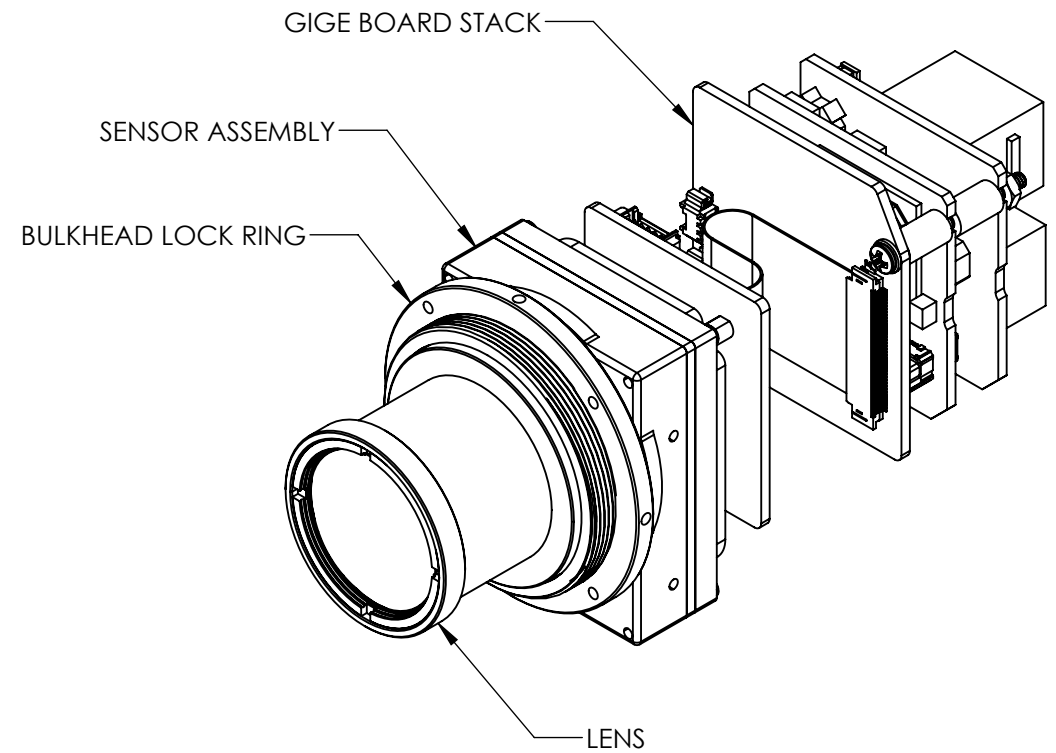
APPROXIMATE
 CENTER OF GRAVITY



TOP VIEW



FRONT VIEW



RIGHT VIEW

SL-D5-1322-A40
 VIENTO HD10 GIGE, 40DEG HFOV, 18MM
 MASS = 157 GRAMS

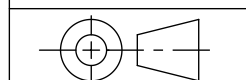
Product Export Classification
 Control Number(ECCN):
 60/30Hz 6A003.b.4.b
 9Hz: 6A993

This document does not
 contain export-controlled
 technology.

UNLESS OTHERWISE SPECIFIED
 DIM ARE IN MILLIMETERS

X ± 2.5 mm	ANGLES
X.X ± 0.3 mm	X ± 1°
X.XX ± 0.13 mm	X.X ± 0.5°

THIRD ANGLE PROJECTION



DO NOT SCALE DRAWING

PROPRIETARY AND CONFIDENTIAL
 THE INFORMATION CONTAINED IN THIS DRAWING IS THE SOLE
 PROPERTY OF SIERRA OLYMPIA TECHNOLOGIES, INC. ANY
 REPRODUCTION IN PART OR AS A WHOLE WITHOUT THE WRITTEN
 PERMISSION OF SIERRA OLYMPIA TECHNOLOGIES, INC. IS PROHIBITED.

MATERIAL:
 N/A

FINISH:
 N/A

N/A

SIERRA-OLYMPIA
 TECHNOLOGIES INC.

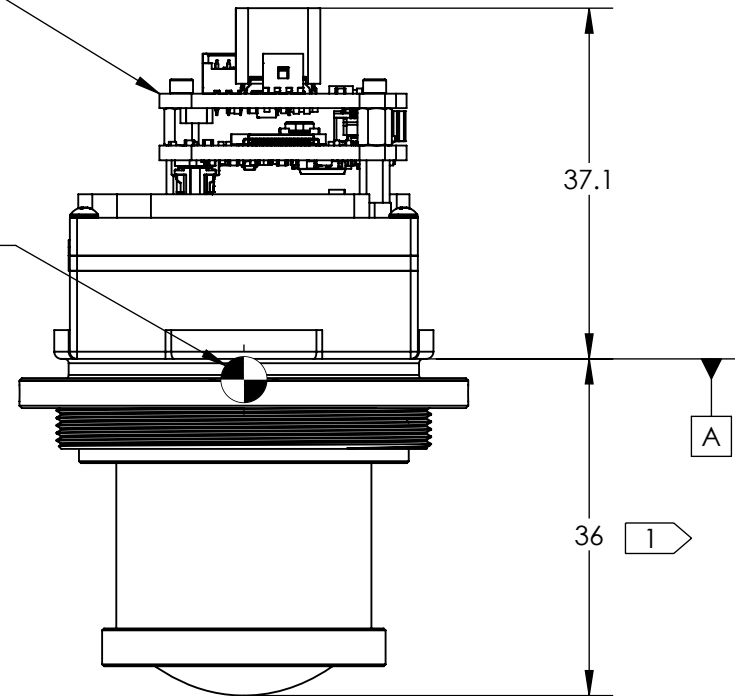
DESCRIPTION:
 MECHANICAL ICD, VIENTO HD10,
 40DEG HFOV, 18MM

SIZE	DRAWN BY:	SHEET 3 OF 8
B	M. SCOTT	

DRAWING NUMBER:	Rev. A
20-70113	

ESTIMATED POWER DRAW IS 2.5W STEADY-STATE.
 CONDUCTIVE OR CONVECTIVE THERMAL DISSIPATION
 IS RECOMMENDED
 FOR ADDITIONAL CONNECTOR INFORMATION REFERENCE
 ELECTRICAL ICD DOC S-D11285

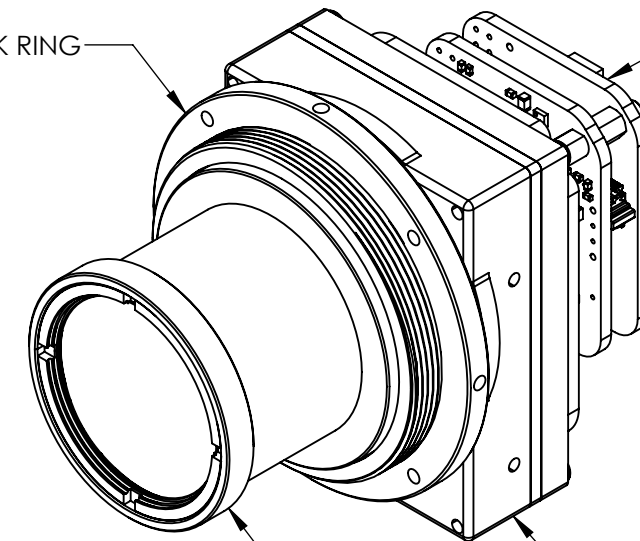
APPROXIMATE
 CENTER OF GRAVITY



TOP VIEW

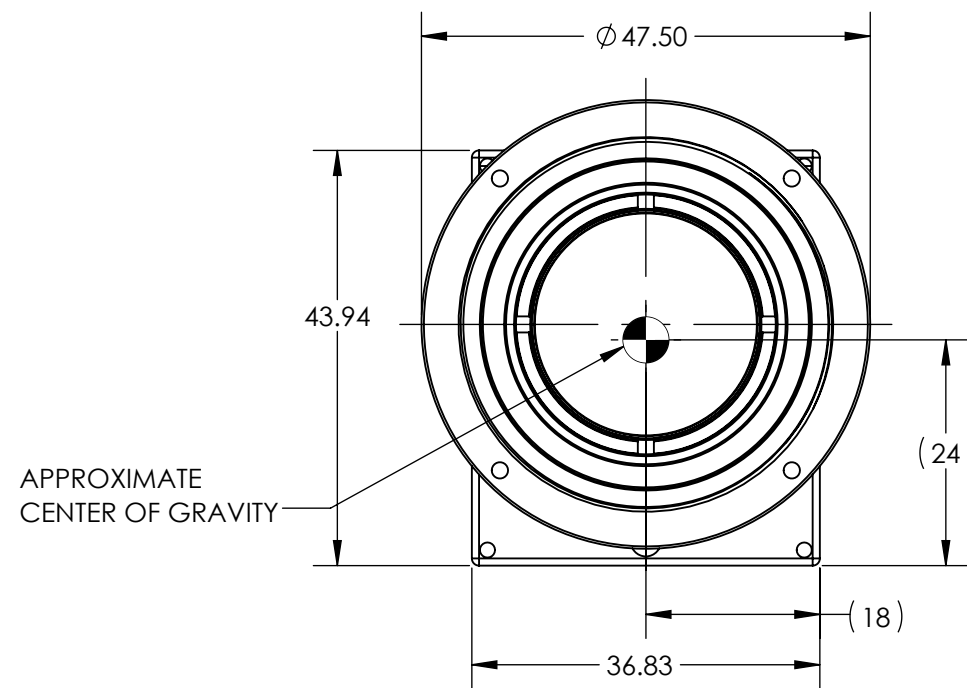
BULKHEAD LOCK RING

USB BOARD STACK

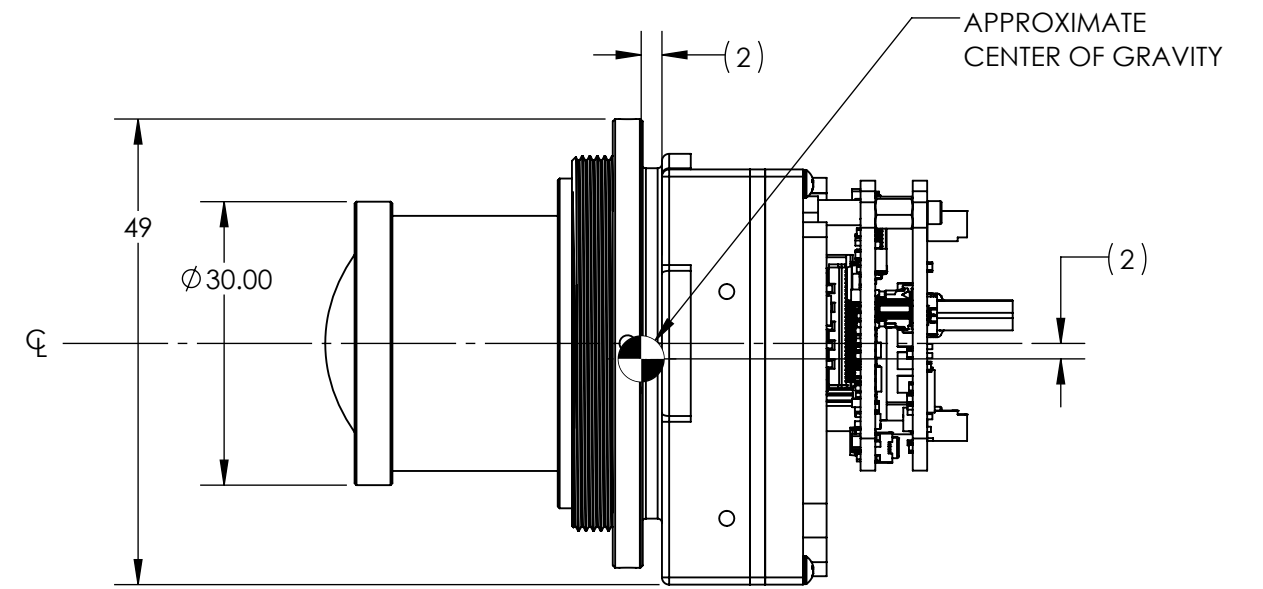


LENS

SENSOR ASSEMBLY



FRONT VIEW



RIGHT VIEW

SL-D5-1324-A40
 VIENTO HD10 USB, 40DEG HFOV, 18MM
 MASS = 115 GRAMS

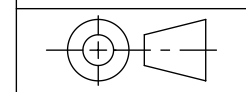
Product Export Classification
 Control Number(ECCN):
 60/30Hz 6A003.b.4.b
 9Hz: 6A993

This document does not
 contain export-controlled
 technology.

UNLESS OTHERWISE SPECIFIED
 DIM ARE IN MILLIMETERS

X \pm 2.5 mm	ANGLES
X.X \pm 0.3 mm	X \pm 1°
X.XX \pm 0.13 mm	X.X \pm 0.5°

THIRD ANGLE PROJECTION



DO NOT SCALE DRAWING

PROPRIETARY AND CONFIDENTIAL
 THE INFORMATION CONTAINED IN THIS DRAWING IS THE SOLE
 PROPERTY OF SIERRA OLYMPIA TECHNOLOGIES, INC. ANY
 REPRODUCTION IN PART OR AS A WHOLE WITHOUT THE WRITTEN
 PERMISSION OF SIERRA OLYMPIA TECHNOLOGIES, INC. IS PROHIBITED.

MATERIAL:
 N/A

FINISH:
 N/A

N/A

SIERRA-OLYMPIA
 TECHNOLOGIES INC.

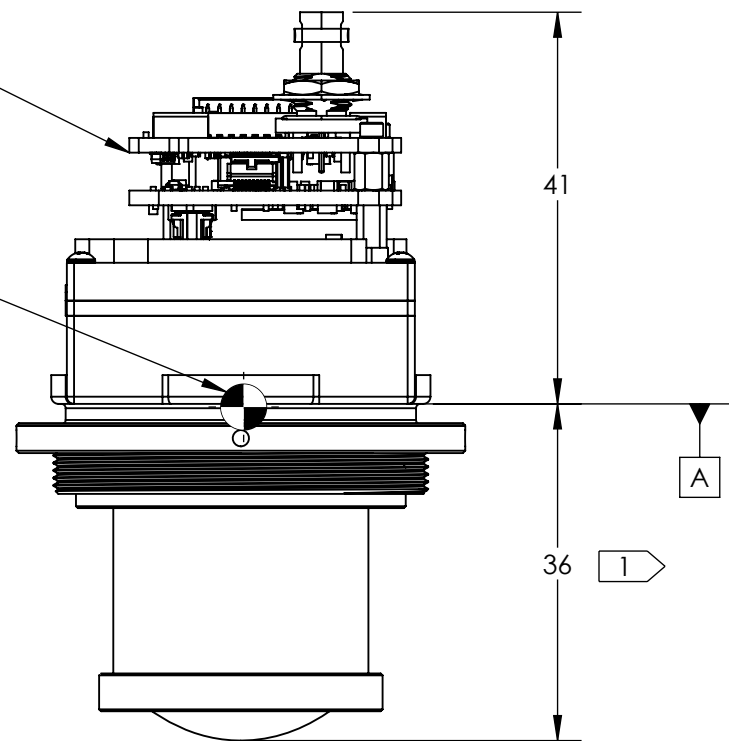
DESCRIPTION:
 MECHANICAL ICD, VIENTO HD10,
 40DEG HFOV, 18MM

SIZE DRAWN BY:
B M. SCOTT SHEET 4 OF 8

DRAWING NUMBER: 20-70113 Rev. A

ESTIMATED POWER DRAW IS 4.1W STEADY-STATE.
 CONDUCTIVE OR CONVECTIVE THERMAL DISSIPATION
 IS RECOMMENDED
 FOR ADDITIONAL CONNECTOR INFORMATION REFERENCE
 ELECTRICAL ICD DOC 20-70054

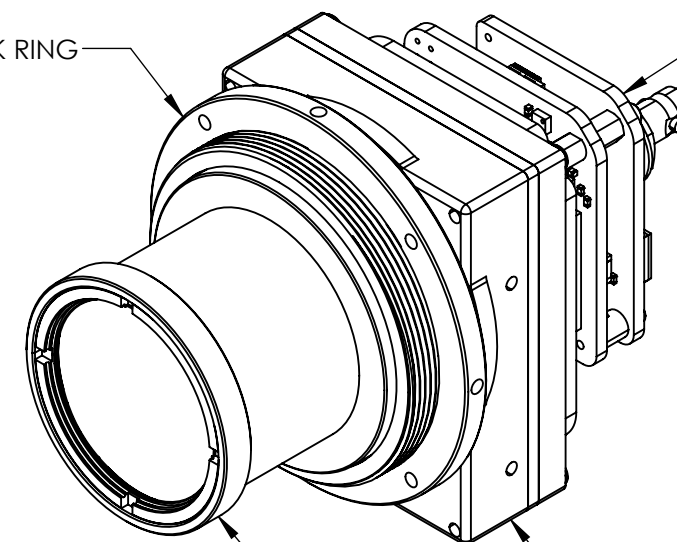
APPROXIMATE
 CENTER OF GRAVITY



TOP VIEW

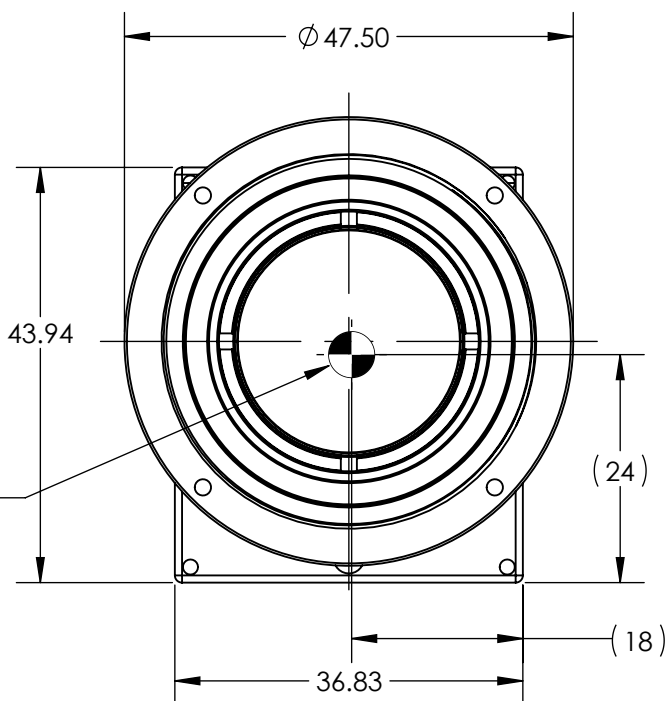
BULKHEAD LOCK RING

SDI BOARD STACK



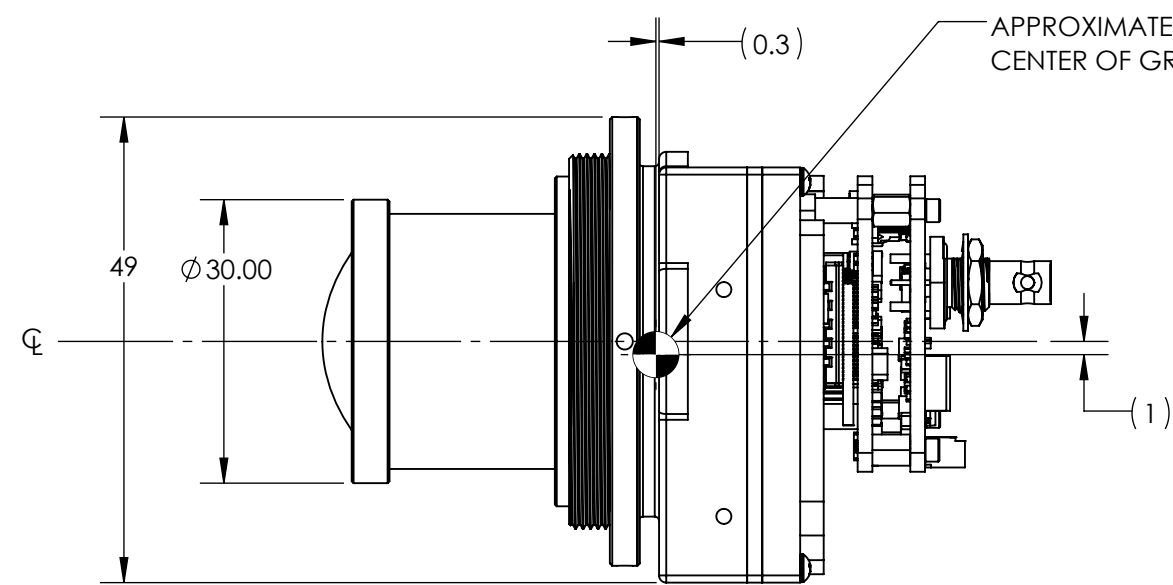
SENSOR ASSEMBLY

LENS



APPROXIMATE
 CENTER OF GRAVITY

FRONT VIEW



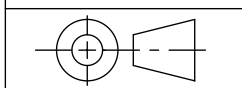
RIGHT VIEW

SL-D5-1326-A40
 VIENTO HD10 SDI, 40DEG HFOV, 18MM
 MASS = 123 GRAMS

Product Export Classification
 Control Number(ECCN):
 60/30Hz 6A003.b.4.b
 9Hz: 6A993
 This document does not
 contain export-controlled
 technology.

UNLESS OTHERWISE SPECIFIED
 DIM ARE IN MILLIMETERS
 X \pm 2.5 mm ANGLES
 X.X \pm 0.3 mm X \pm 1°
 X.XX \pm 0.13 mm X.X \pm 0.5°

THIRD ANGLE PROJECTION



DO NOT SCALE DRAWING

PROPRIETARY AND CONFIDENTIAL
 THE INFORMATION CONTAINED IN THIS DRAWING IS THE SOLE
 PROPERTY OF SIERRA OLYMPIA TECHNOLOGIES, INC. ANY
 REPRODUCTION IN PART OR AS A WHOLE WITHOUT THE WRITTEN
 PERMISSION OF SIERRA OLYMPIA TECHNOLOGIES, INC. IS PROHIBITED.

MATERIAL:
 N/A

FINISH:
 N/A

N/A

SIERRA-OLYMPIA
 TECHNOLOGIES INC.

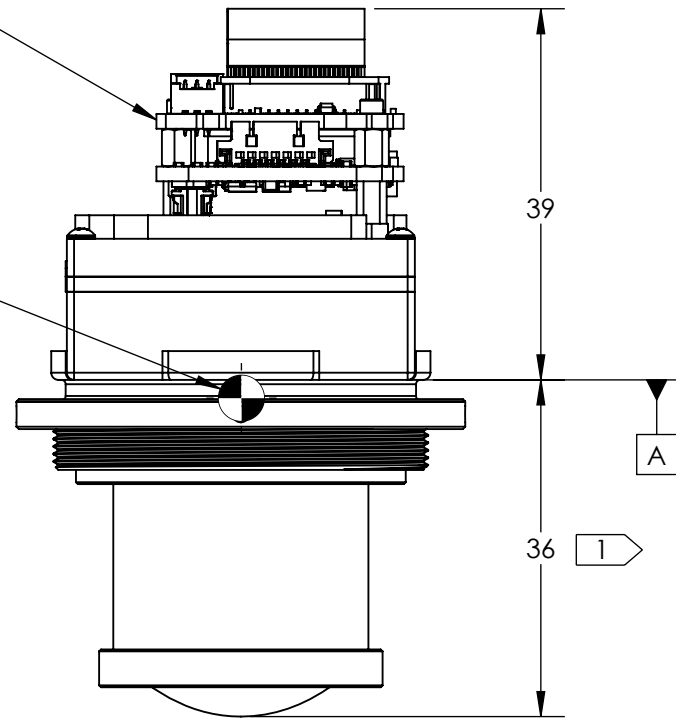
DESCRIPTION:
 MECHANICAL ICD, VIENTO HD10,
 40DEG HFOV, 18MM

SIZE DRAWN BY:
B M. SCOTT SHEET 5 OF 8

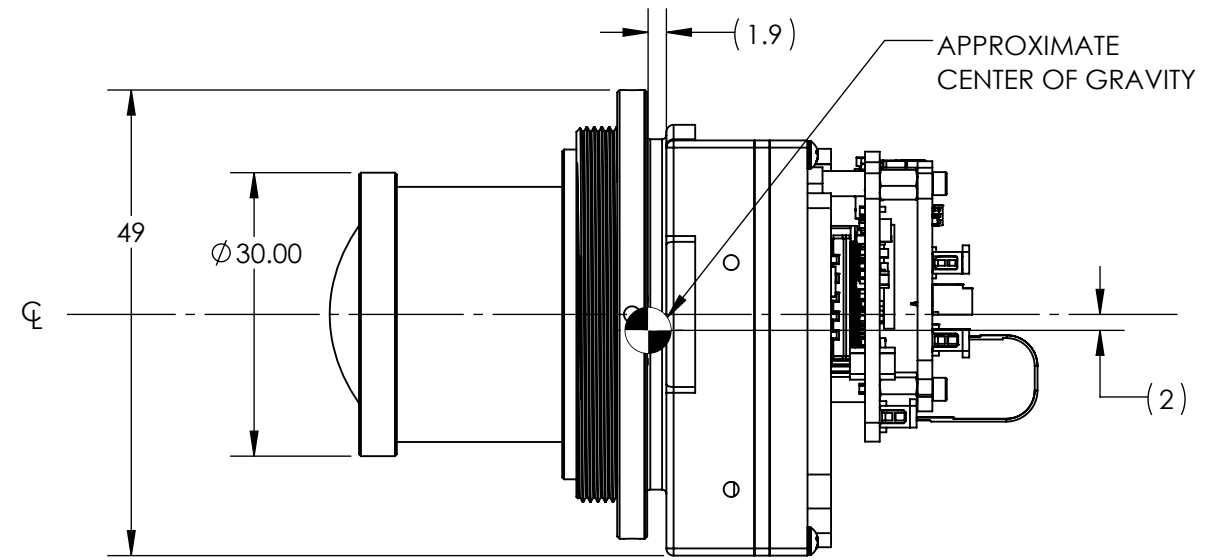
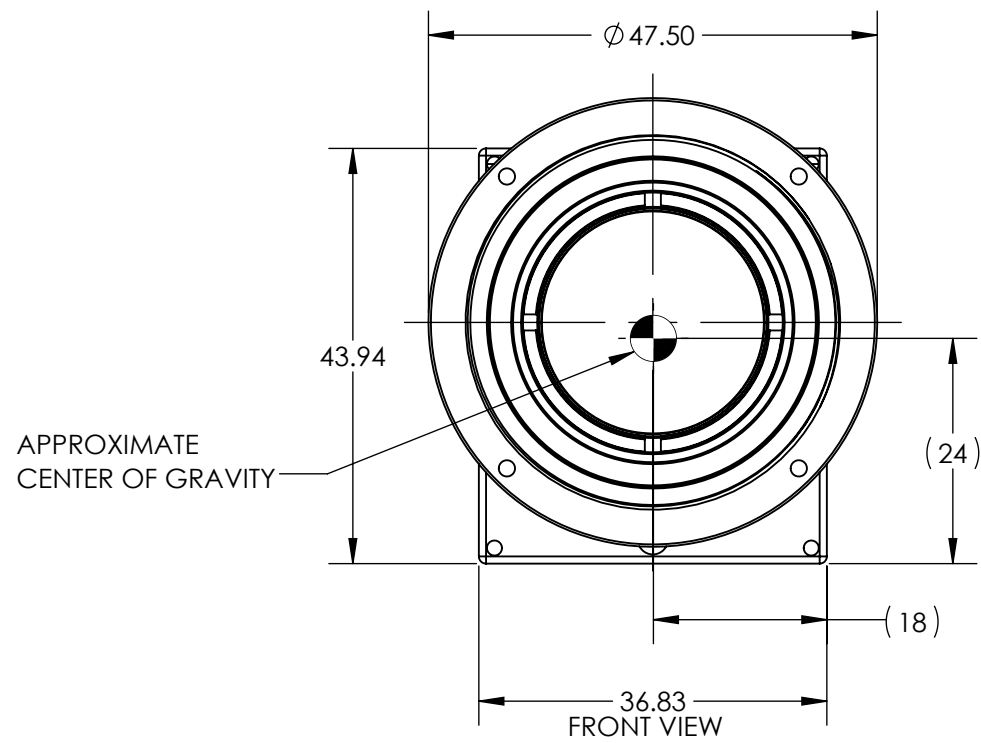
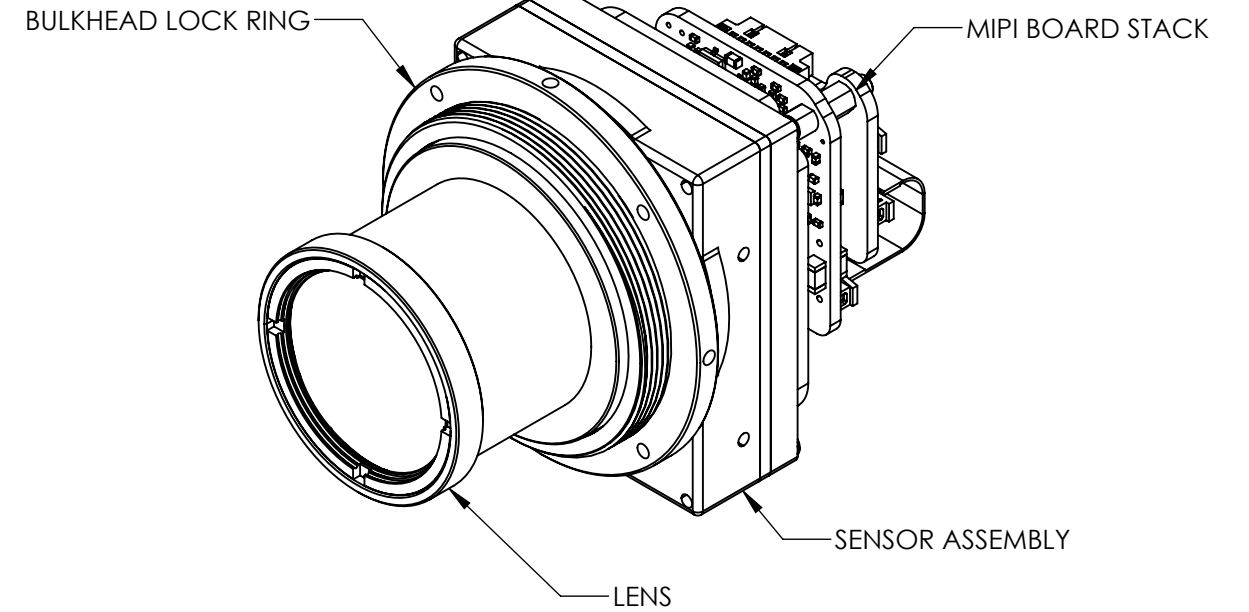
DRAWING NUMBER: 20-70113 Rev. A

ESTIMATED POWER DRAW IS 3.1W STEADY-STATE.
 CONDUCTIVE OR CONVECTIVE THERMAL DISSIPATION
 IS RECOMMENDED
 FOR ADDITIONAL CONNECTOR INFORMATION REFERENCE
 ELECTRICAL ICD DOC 20-70060

APPROXIMATE
 CENTER OF GRAVITY



TOP VIEW

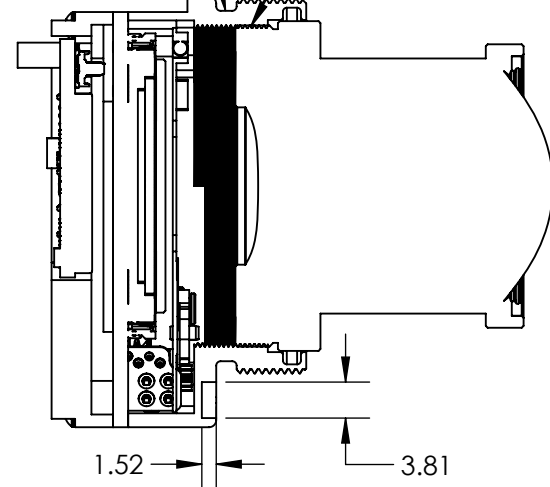


RIGHT VIEW

SL-D5-1328-A40
 VIENTO HD10 MIPI, 40DEG HFOV, 18MM
 MASS = 116 GRAMS

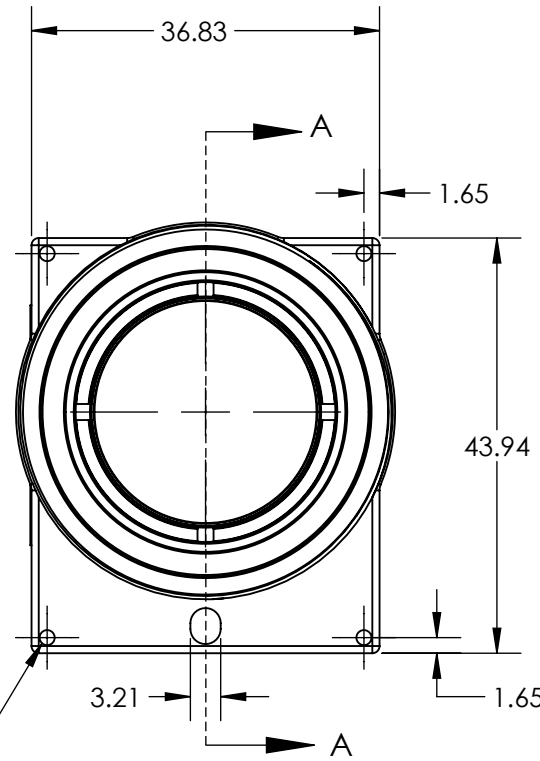
Product Export Classification Control Number(ECCN): 60/30Hz 6A003.b.4.b 9Hz: 6A993 This document does not contain export-controlled technology.	UNLESS OTHERWISE SPECIFIED DIM ARE IN MILLIMETERS		PROPRIETARY AND CONFIDENTIAL THE INFORMATION CONTAINED IN THIS DRAWING IS THE SOLE PROPERTY OF SIERRA OLYMPIA TECHNOLOGIES, INC. ANY REPRODUCTION IN PART OR AS A WHOLE WITHOUT THE WRITTEN PERMISSION OF SIERRA OLYMPIA TECHNOLOGIES, INC. IS PROHIBITED.	SIERRA-OLYMPIA TECHNOLOGIES INC.	
	X ± 2.5 mm	ANGLES X ± 1°			
	X.X ± 0.3 mm	X.X ± 0.5°		SIZE B	
	X.XX ± 0.13 mm			DRAWN BY: M. SCOTT	
THIRD ANGLE PROJECTION		MATERIAL: N/A		DRAWING NUMBER: 20-70113	
		FINISH: N/A		SHEET 6 OF 8	
DO NOT SCALE DRAWING		N/A		Rev. A	

O RING GROOVE
M34 X 0.5-6H
INTERNAL THREAD

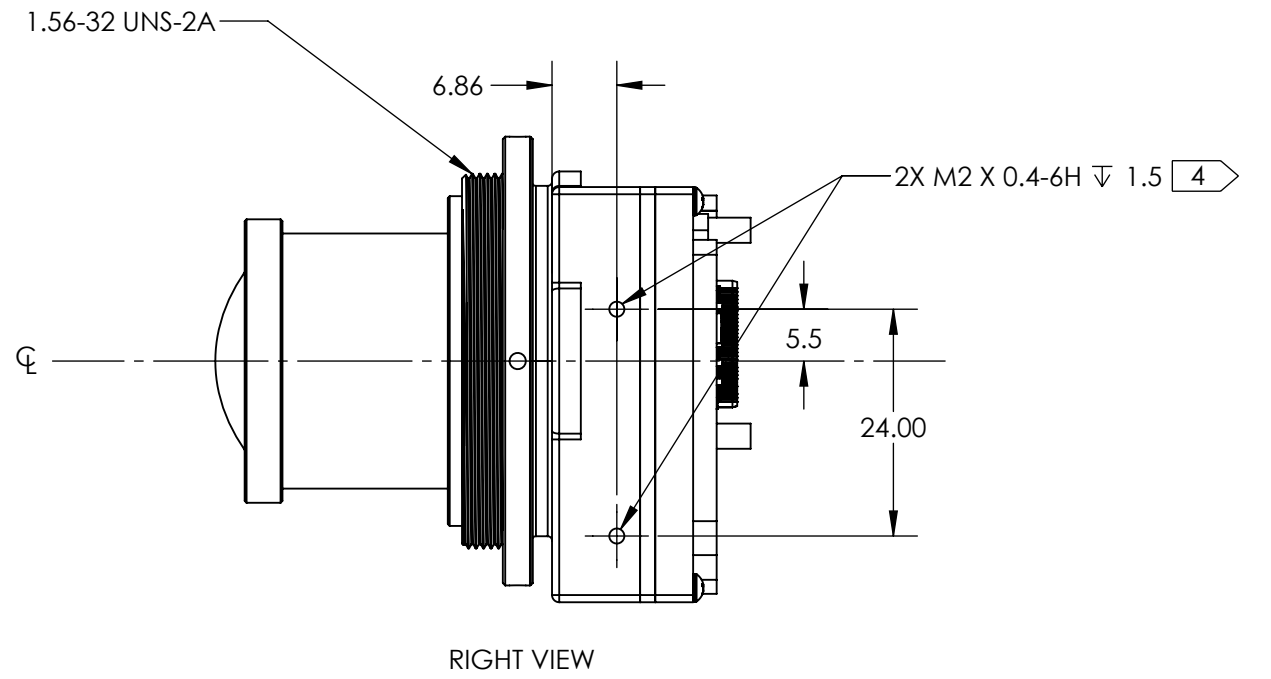


SECTION A-A

4 4X M2 X 0.4-6H ∇ 3.0

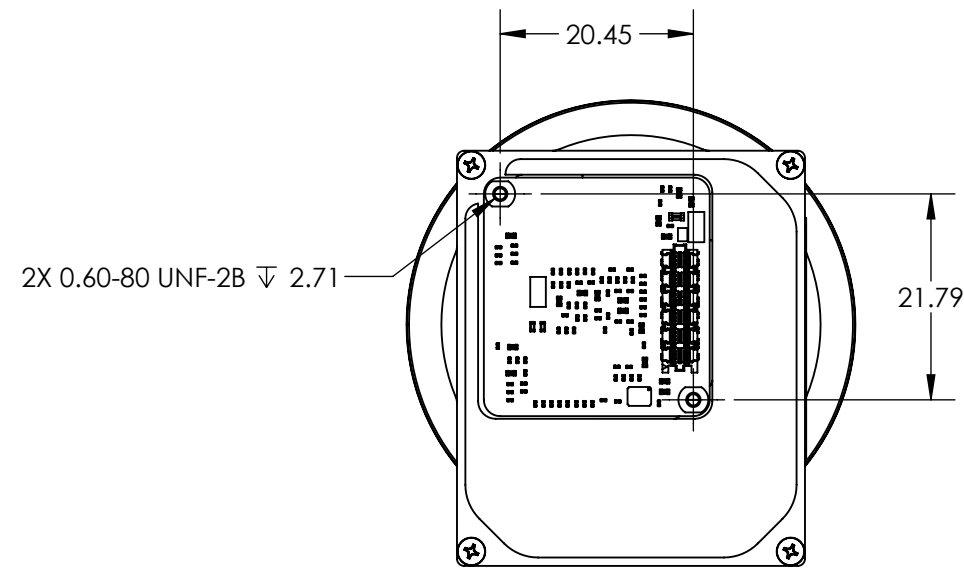


FRONT VIEW (LOCKRING REMOVED FOR CLARITY)

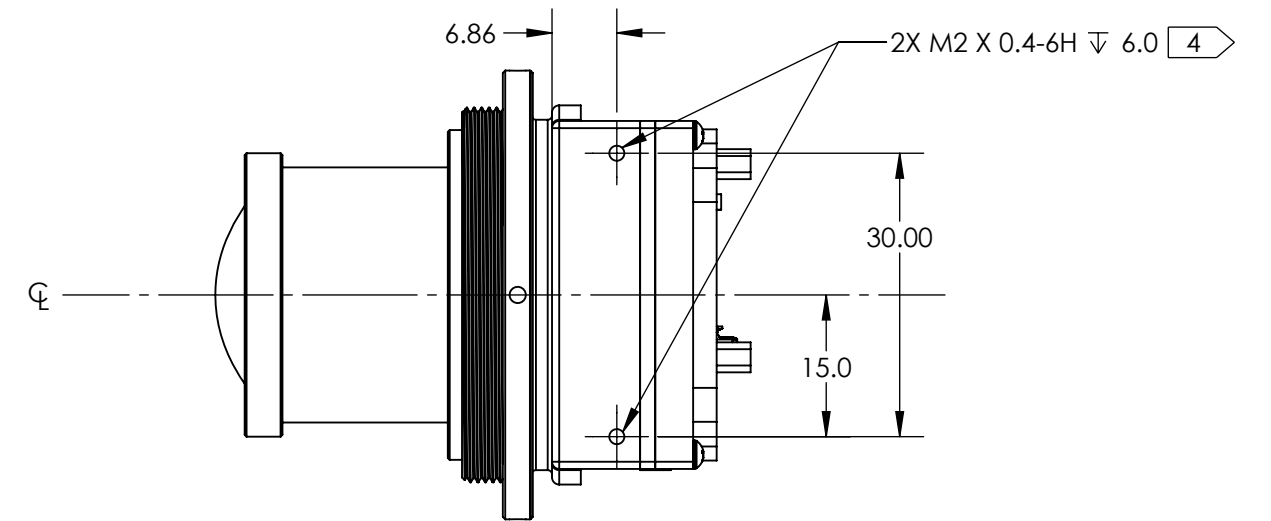


RIGHT VIEW

NOTE: REMOVAL AND REINSTALLATION
OF LENS. FOD RISK



BACK VIEW



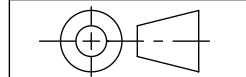
BOTTOM VIEW

Product Export Classification
Control Number(ECCN):
60/30Hz 6A003.b.4.b
9Hz: 6A993

This document does not
contain export-controlled
technology.

UNLESS OTHERWISE SPECIFIED
DIM ARE IN MILLIMETERS
X \pm 2.5 mm ANGLES
X.X \pm 0.3 mm X \pm 1°
X.XX \pm 0.13 mm X.X \pm 0.5°

THIRD ANGLE PROJECTION



DO NOT SCALE DRAWING

PROPRIETARY AND CONFIDENTIAL
THE INFORMATION CONTAINED IN THIS DRAWING IS THE SOLE
PROPERTY OF SIERRA OLYMPIA TECHNOLOGIES, INC. ANY
REPRODUCTION IN PART OR AS A WHOLE WITHOUT THE WRITTEN
PERMISSION OF SIERRA OLYMPIA TECHNOLOGIES, INC. IS PROHIBITED.

MATERIAL:
N/A

FINISH:
N/A

N/A

SIERRA-OLYMPIA
TECHNOLOGIES INC.

DESCRIPTION:
MECHANICAL ICD, VIENTO HD10,
40DEG HFOV, 18MM

SIZE DRAWN BY:
B M. SCOTT SHEET 7 OF 8

DRAWING NUMBER: 20-70113 Rev. A

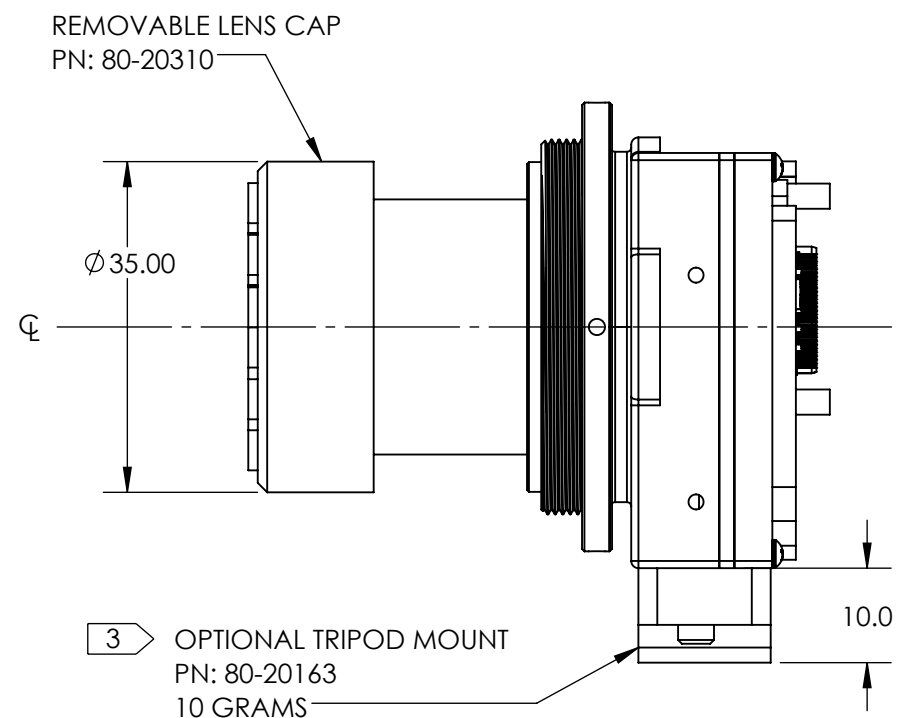
4

3

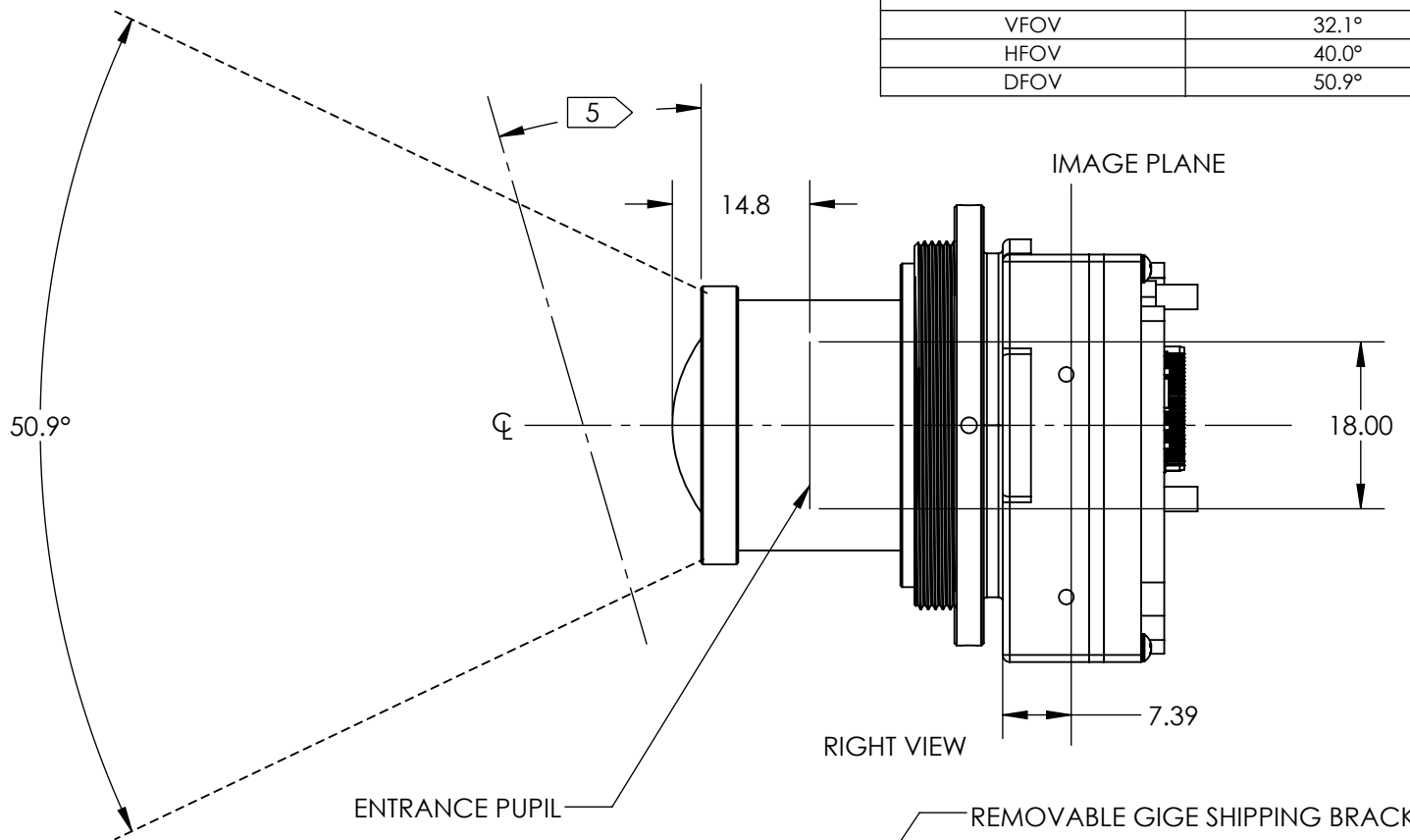
2

1

FIELDS OF VIEW	
ENTRANCE PUPIL LOCATION 14.8mm BEHIND LENS VERTEX	
ENTRANCE PUPIL DIAMETER: 18mm	
VFOV	32.1°
HFOV	40.0°
DFOV	50.9°

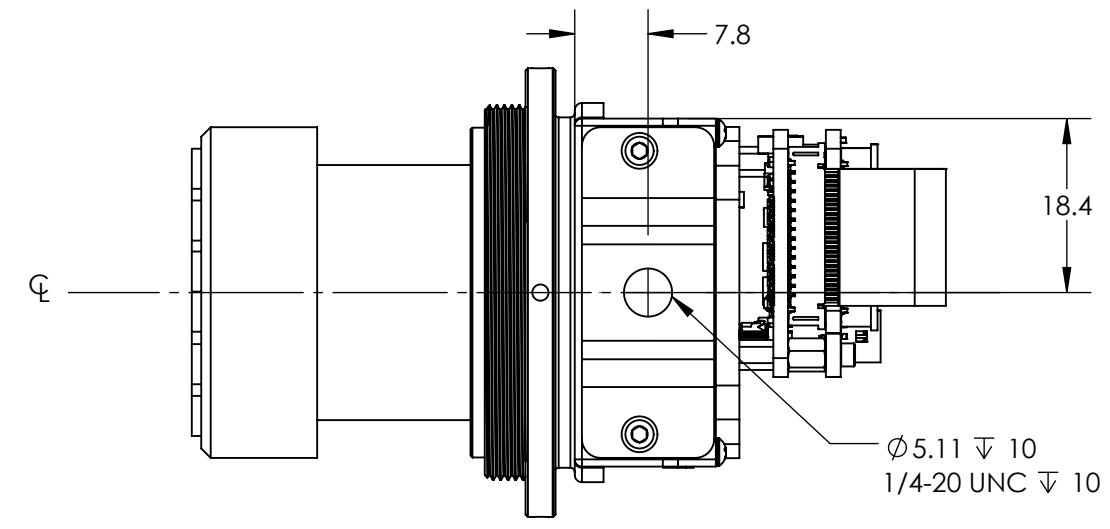


RIGHT VIEW WITH REMOVABLE TRIPOD MOUNT AND REMOVABLE LENS CAP

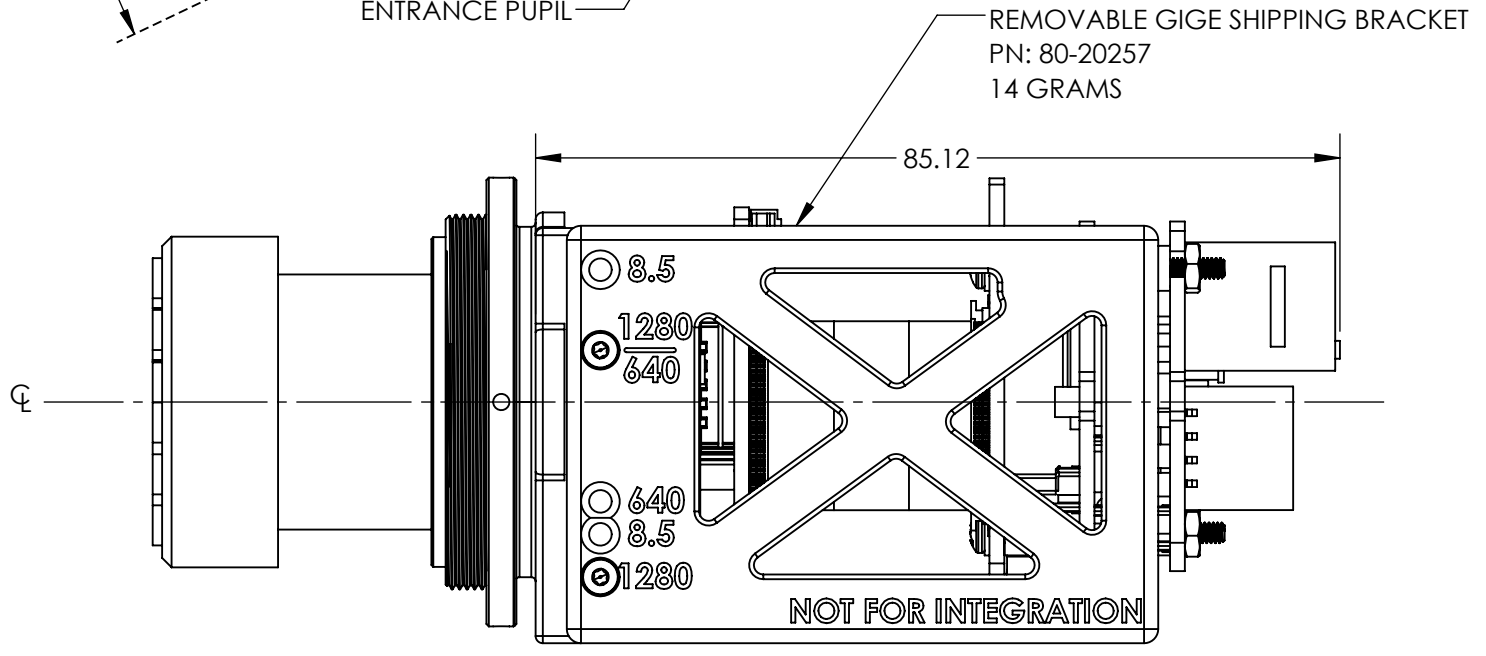


RIGHT VIEW

B



BOTTOM VIEW WITH REMOVABLE TRIPOD MOUNT AND REMOVABLE LENS CAP



RIGHT VIEW WITH REMOVABLE GIGE SHIPPING BRACKET

A

Product Export Classification Control Number(ECCN): 60/30Hz 6A003.b.4.b 9Hz: 6A993 This document does not contain export-controlled technology.	UNLESS OTHERWISE SPECIFIED DIM ARE IN MILLIMETERS		PROPRIETARY AND CONFIDENTIAL THE INFORMATION CONTAINED IN THIS DRAWING IS THE SOLE PROPERTY OF SIERRA OLYMPIA TECHNOLOGIES, INC. ANY REPRODUCTION IN PART OR AS A WHOLE WITHOUT THE WRITTEN PERMISSION OF SIERRA OLYMPIA TECHNOLOGIES, INC. IS PROHIBITED. MATERIAL: N/A FINISH: N/A N/A	SIERRA-OLYMPIA TECHNOLOGIES INC. DESCRIPTION: MECHANICAL ICD, VIENTO HD10, 40DEG HFOV, 18MM SIZE: B DRAWN BY: M. SCOTT SHEET 8 OF 8 DRAWING NUMBER: 20-70113 Rev. A
	X ± 2.5 mm	ANGLES X ± 1°		
	X.X ± 0.3 mm	X.X ± 0.5°		
	X.XX ± 0.13 mm			
THIRD ANGLE PROJECTION				
DO NOT SCALE DRAWING				

4

3

2

1