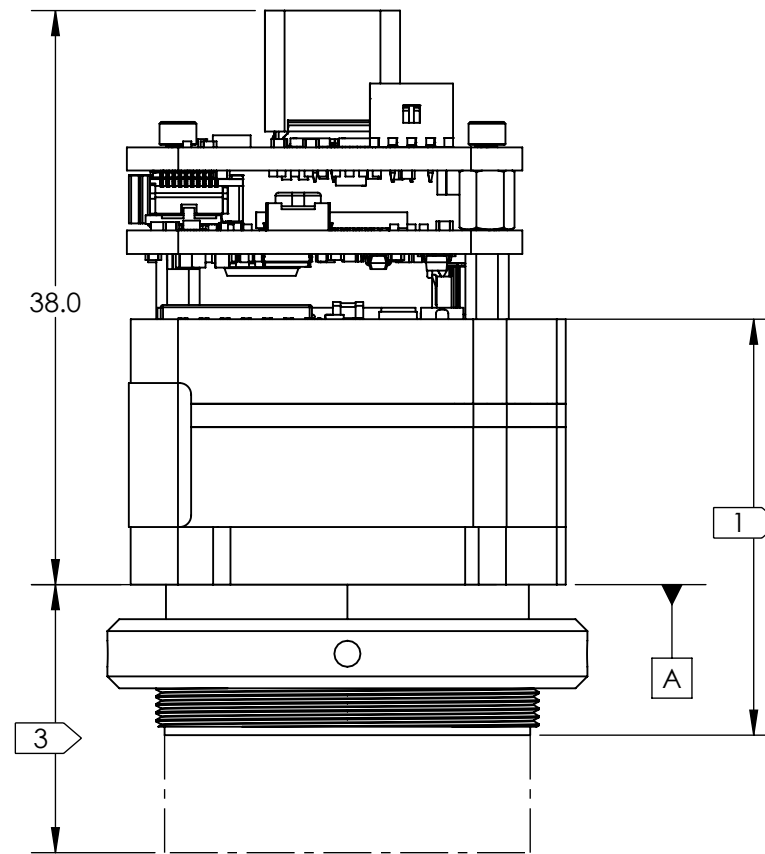
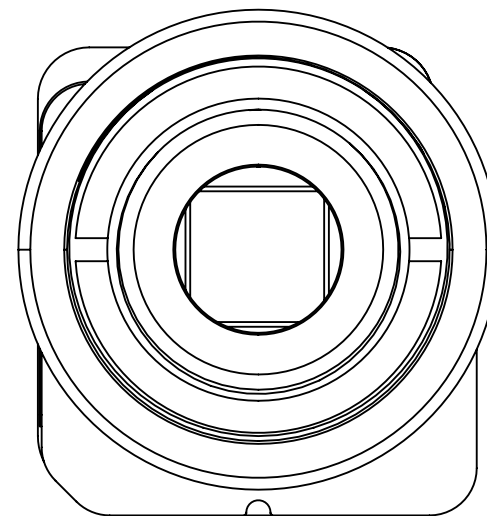


NOTES:

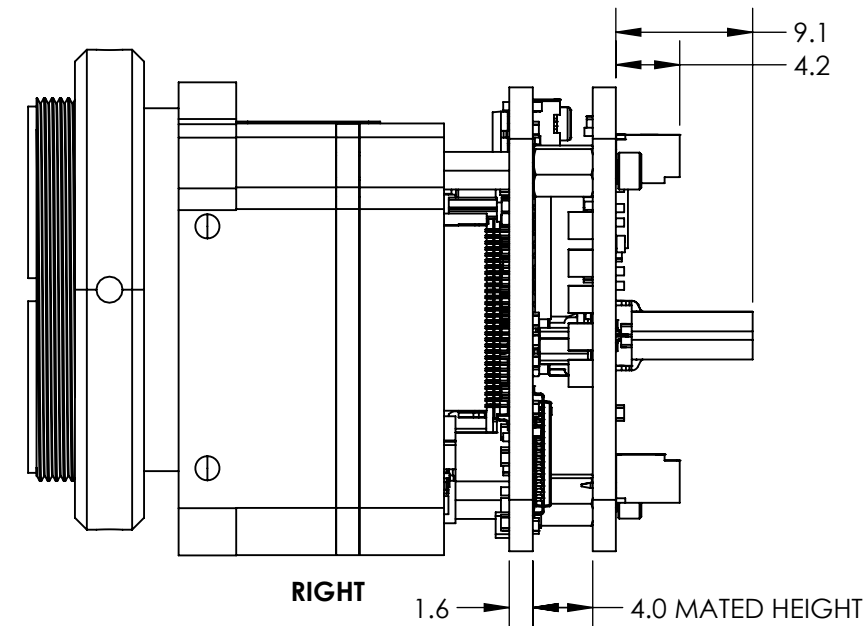
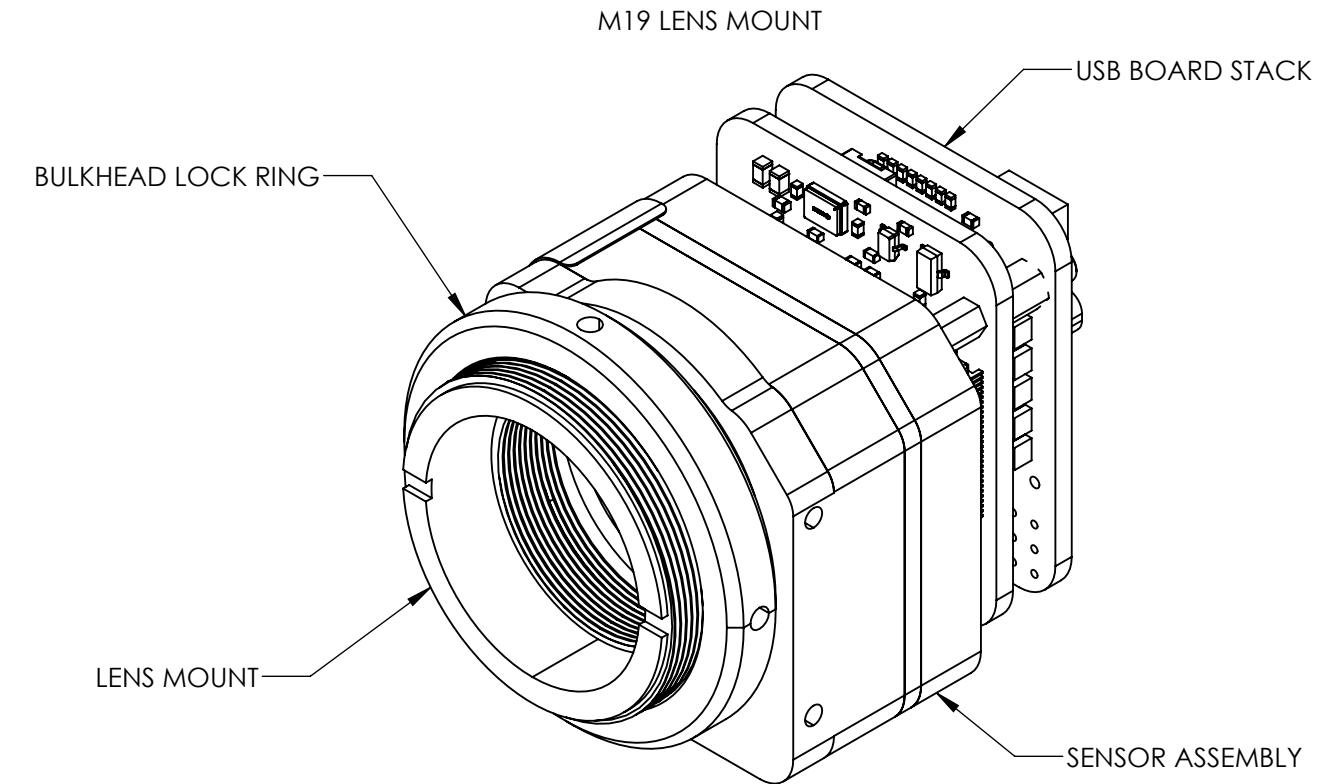
- 1. REFER TO DRS MECHANICAL ICD, 1028737 TENUM640 MECHANICAL ICD, FOR DETAILED SENSOR CORE DIMENSIONS AND MOUNTING INFO
- 2. ESTIMATED POWER DRAW IS 2.0W STEADY-STATE. CONDUCTIVE OR CONVECTIVE THERMAL DISSIPATION IS RECOMMENDED.
- 3. SEE SHEET 3 FOR CONFIGURATIONS, LENS POSITION RELATIVE TO CAMERA BODY WILL VARY WITH FOCUS. REFERTO DRS MECHANICAL ICD, 1028737 TENUM640 MECHANICAL ICD, FOR LENS DIMENSIONS
- 4. FOR ADDITIONAL CONNECTOR INFORMATION REFERENCE ELECTRICAL ICD DOC S-D11285
- 5. J3 GENLOCK SEE SOTI APPLICATION NOTE 50-90001 FOR COMMAND MODES, SIGNAL LEVELS, AND TIMING
- 6. OUTSIDE BOARD DIMENSION AND HOLD LOCATION TOLERANCE: +/- 0.127 MM
- 7. APPROXIMATE CONNECTOR CENTER LOCATIONS SHOWN ON PAGE 4
- 8. DRS USB INTERFACE APPROX MASS: 4 g
- 9. DRS USBC ADAPTER APPROX MASS: 3 g



TOP



FRONT



RIGHT

REVISIONS					
ZONE	REV.	DESCRIPTION	ECO	DATE	ENGINEER
	D	UPDATED TO NEW USBC ADAPTER BOARD	1689	2024-08-12	D. KAMINSKI
	E	UPDATE TABLE 1 AND TABLE 2 DRS PNS, UPDATE FORMAT	1780	2024-08-12	D. KAMINSKI

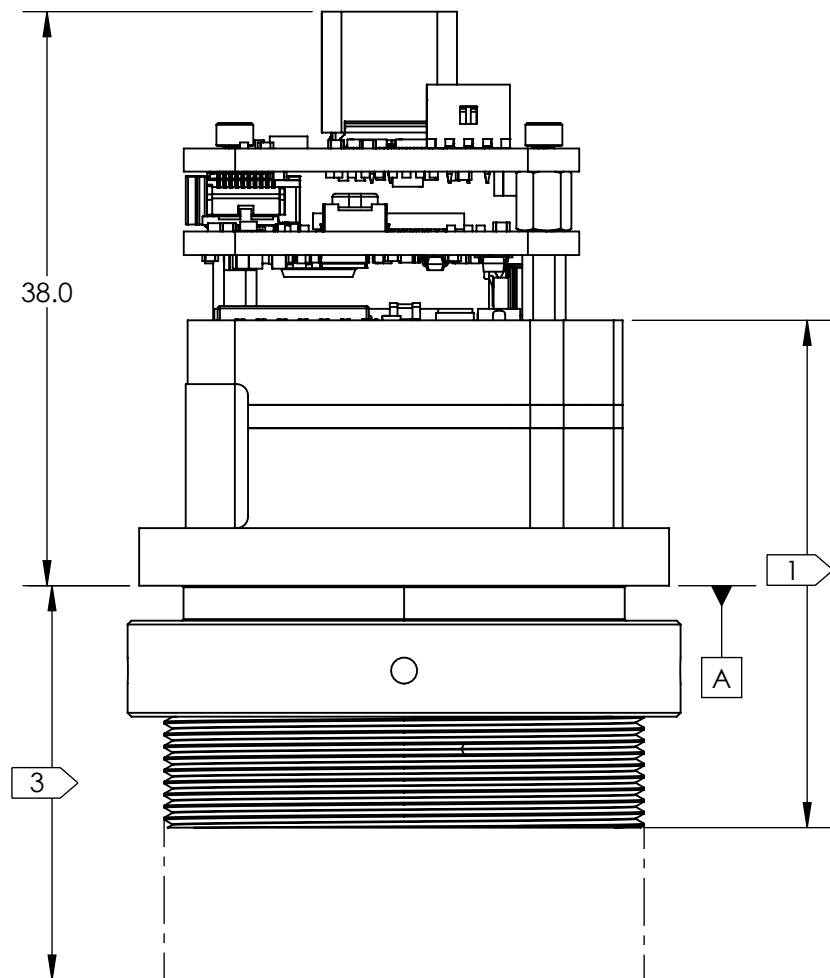
Product Export Classification Control Number(ECCN): 60/30Hz 6A003.b.4.b 9Hz: 6A993  This document does not contain export-controlled technology.	UNLESS OTHERWISE SPECIFIED DIM ARE IN MILLIMETERS		<b>PROPRIETARY AND CONFIDENTIAL</b> THE INFORMATION CONTAINED IN THIS DRAWING IS THE SOLE PROPERTY OF SIERRA OLYMPIA TECHNOLOGIES, INC. ANY REPRODUCTION IN PART OR AS A WHOLE WITHOUT THE WRITTEN PERMISSION OF SIERRA OLYMPIA TECHNOLOGIES, INC. IS PROHIBITED.  MATERIAL: N/A	<b>SIERRA-OLYMPIA TECHNOLOGIES INC.</b> DESCRIPTION: Mechanical ICD Viento-10 USB			
	X ± 2.5 mm	ANGLES X ± 1°					
	X.X ± 0.3 mm	X.X ± 0.5°		FINISH: N/A	SIZE <b>B</b>	DRAWN BY: D. KAMINSKI	SHEET 1 OF 5
	X.XX ± 0.13 mm			THIRD ANGLE PROJECTION	DRAWING NUMBER: S-D11513		
DO NOT SCALE DRAWING			CAD CONTROLLED PART. THE NOMINAL PART GEOMETRY IS CONTROLLED BY THE 3D CAD PART FILE.				

4

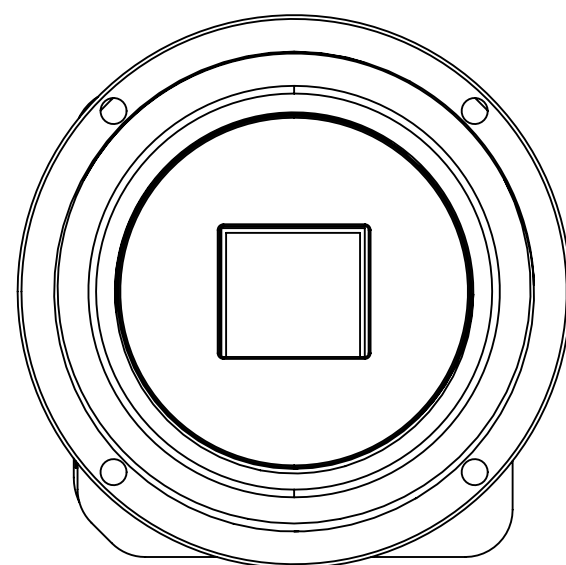
3

2

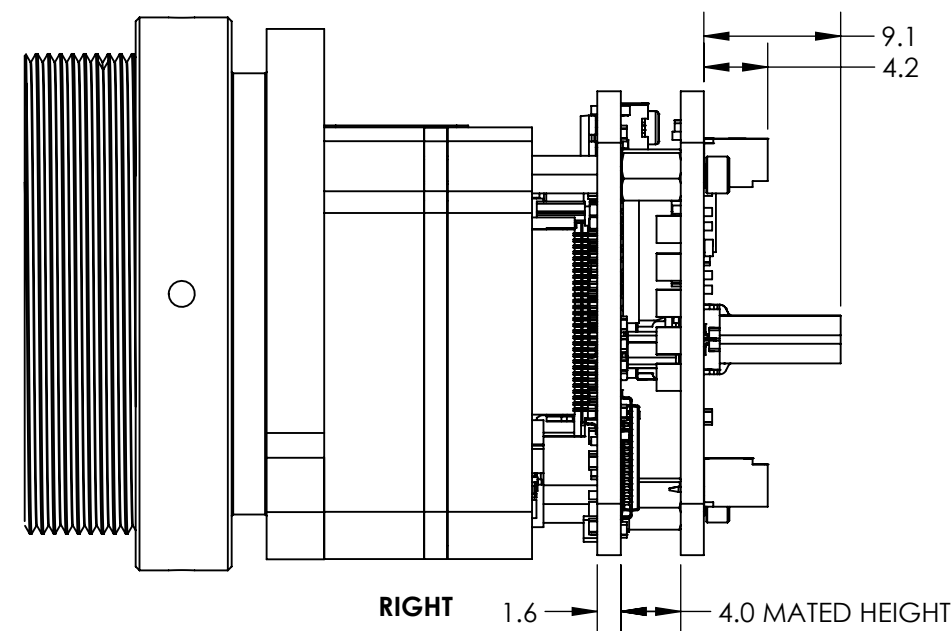
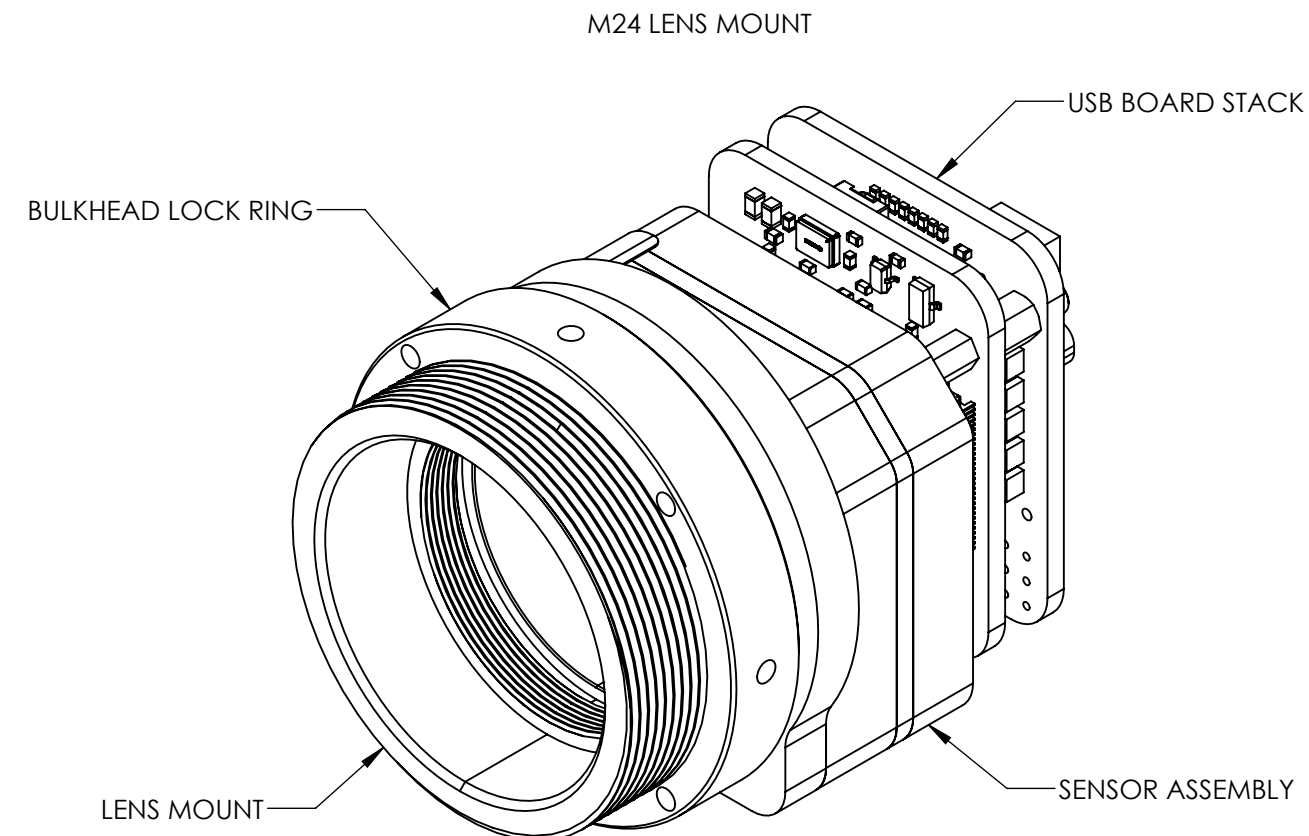
1



TOP



FRONT



RIGHT

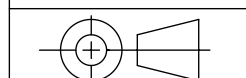
Product Export Classification  
Control Number(ECCN):  
60/30Hz 6A003.b.4.b  
9Hz: 6A993

This document does not  
contain export-controlled  
technology.

UNLESS OTHERWISE SPECIFIED  
DIM ARE IN MILLIMETERS

X ± 2.5 mm	ANGLES
X.X ± 0.3 mm	X ± 1°
X.XX ± 0.13 mm	X.X ± 0.5°

THIRD ANGLE PROJECTION



DO NOT SCALE DRAWING

**PROPRIETARY AND CONFIDENTIAL**  
THE INFORMATION CONTAINED IN THIS DRAWING IS THE SOLE  
PROPERTY OF SIERRA OLYMPIA TECHNOLOGIES, INC. ANY  
REPRODUCTION IN PART OR AS A WHOLE WITHOUT THE WRITTEN  
PERMISSION OF SIERRA OLYMPIA TECHNOLOGIES, INC. IS PROHIBITED.

MATERIAL:  
N/A

FINISH:  
N/A

CAD CONTROLLED PART. THE NOMINAL PART GEOMETRY IS CONTROLLED BY  
THE 3D CAD PART FILE.



DESCRIPTION:  
Mechanical ICD Viento-10 USB

SIZE <b>B</b>	DRAWN BY: D. KAMINSKI	SHEET 2 OF 5
------------------	--------------------------	--------------

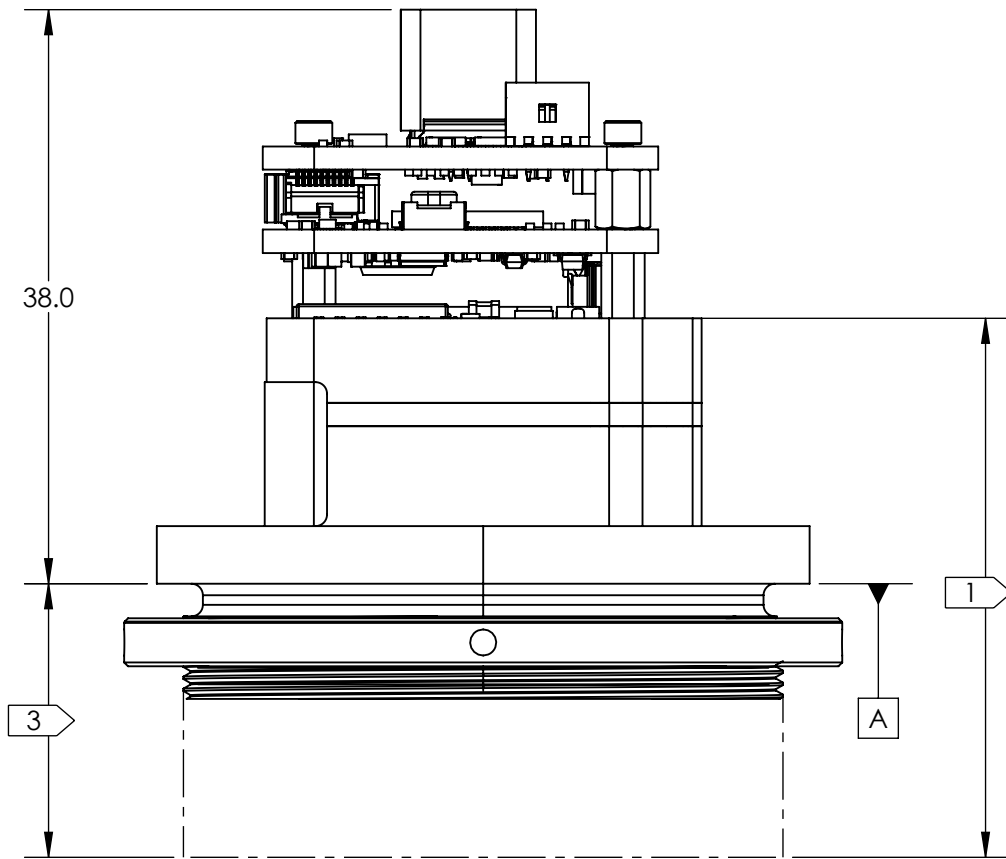
DRAWING NUMBER: S-D11513	Rev. E
-----------------------------	--------

4

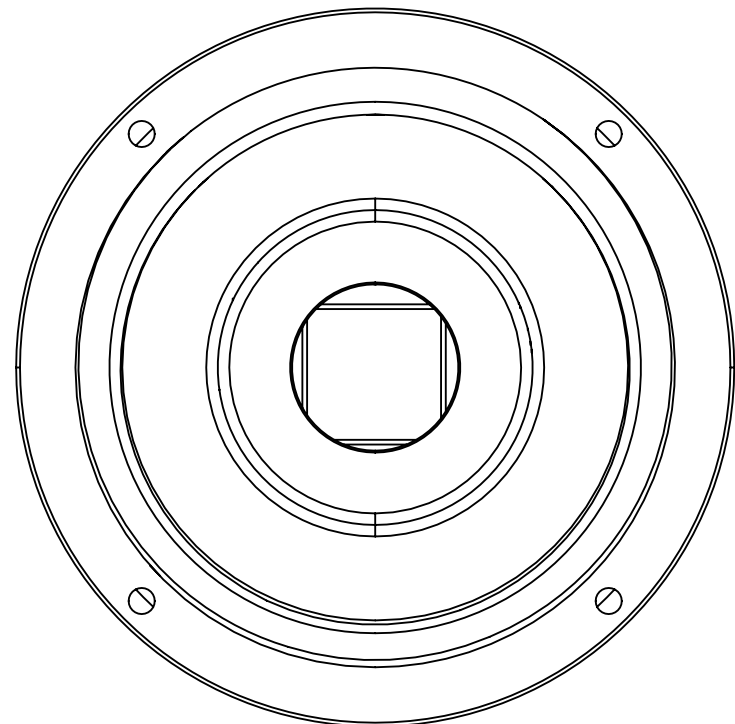
3

2

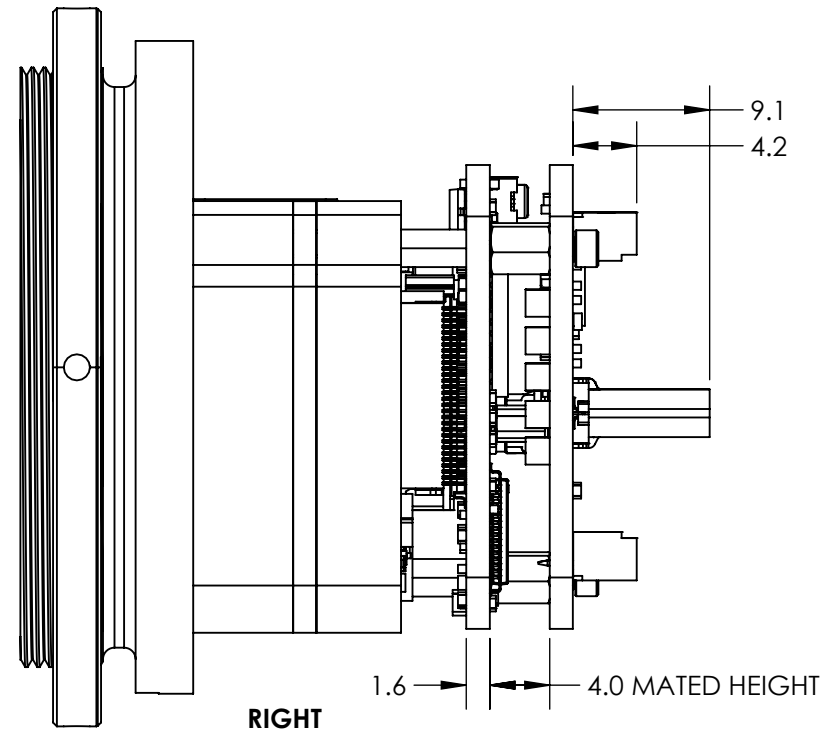
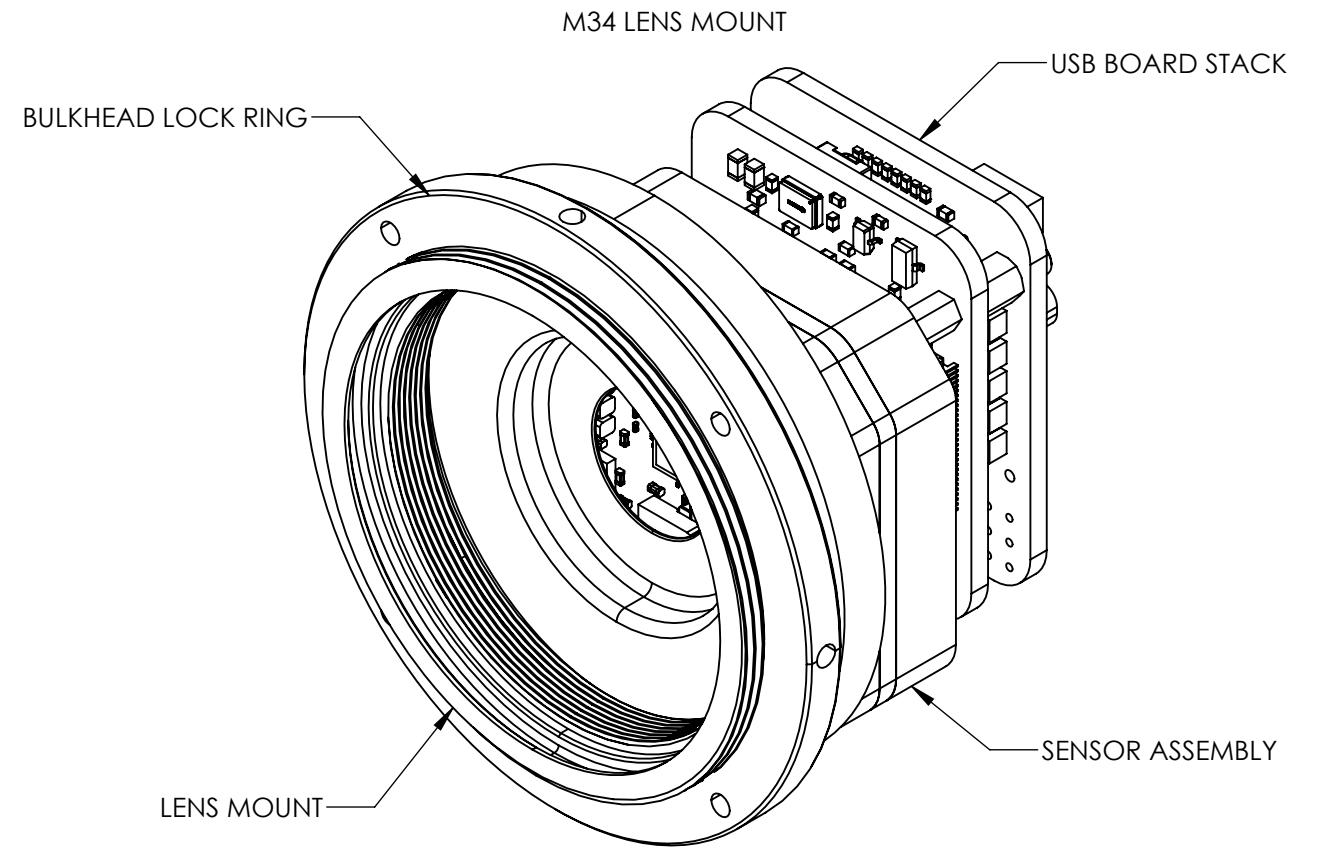
1



TOP



FRONT



RIGHT

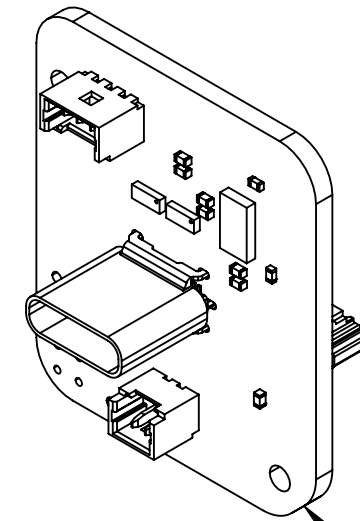
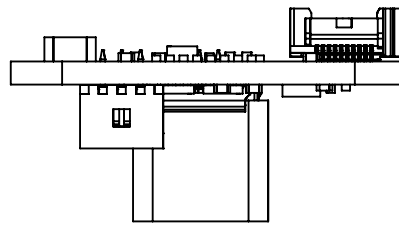
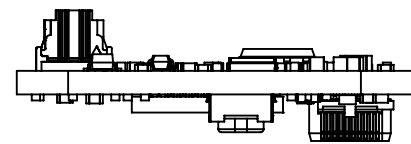
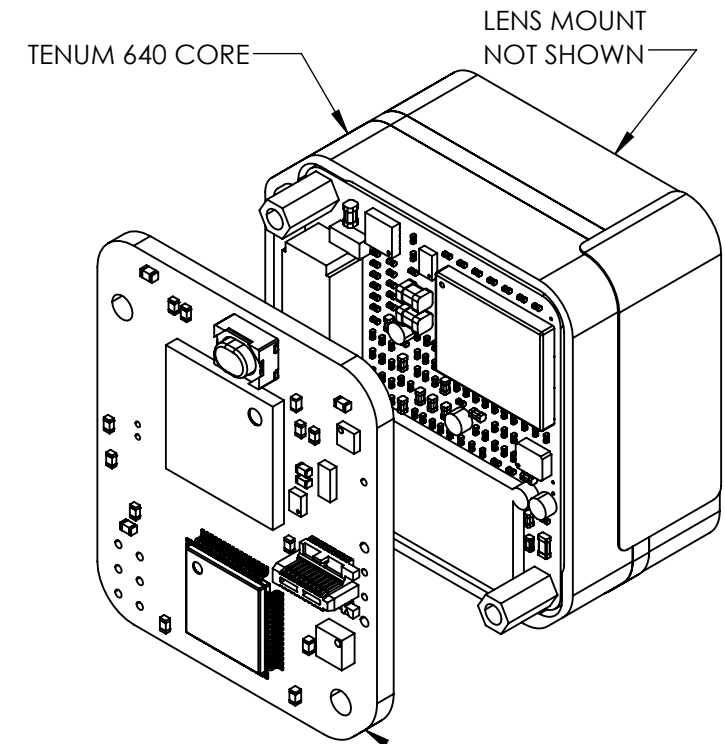
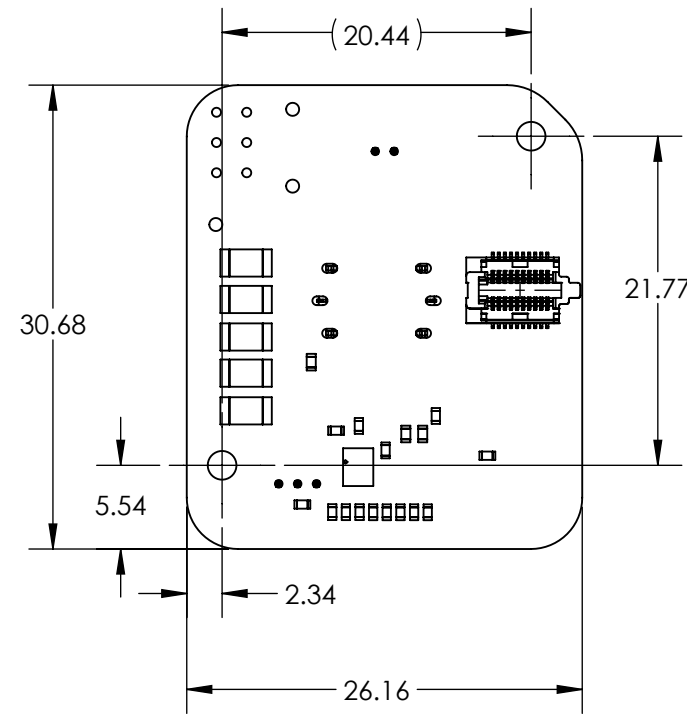
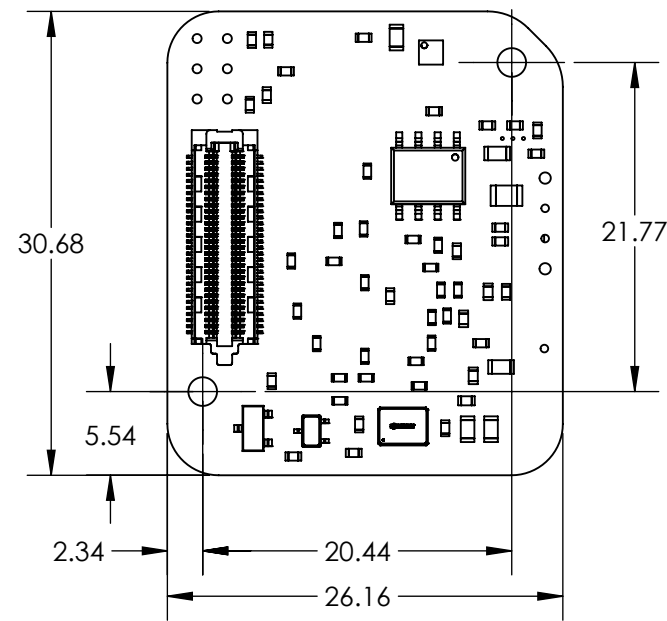
Product Export Classification Control Number(ECCN): 60/30Hz 6A003.b.4.b 9Hz: 6A993  This document does not contain export-controlled technology.	UNLESS OTHERWISE SPECIFIED DIM ARE IN MILLIMETERS		<b>PROPRIETARY AND CONFIDENTIAL</b> THE INFORMATION CONTAINED IN THIS DRAWING IS THE SOLE PROPERTY OF SIERRA OLYMPIA TECHNOLOGIES, INC. ANY REPRODUCTION IN PART OR AS A WHOLE WITHOUT THE WRITTEN PERMISSION OF SIERRA OLYMPIA TECHNOLOGIES, INC. IS PROHIBITED.		<b>SIERRA-OLYMPIA</b> TECHNOLOGIES INC.
	X ± 2.5 mm X.X ± 0.3 mm X.XX ± 0.13 mm	ANGLES X ± 1° X.X ± 0.5°	MATERIAL: N/A		
	THIRD ANGLE PROJECTION 		FINISH: N/A		SIZE: <b>B</b> DRAWN BY: D. KAMINSKI
	DO NOT SCALE DRAWING		CAD CONTROLLED PART. THE NOMINAL PART GEOMETRY IS CONTROLLED BY THE 3D CAD PART FILE.		DRAWING NUMBER: S-D11513 SHEET 3 OF 5 Rev. E

4

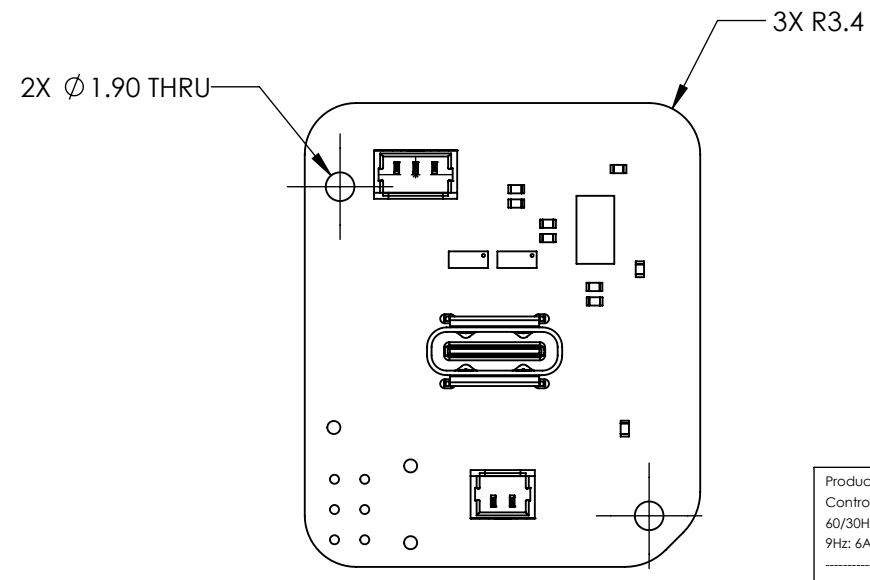
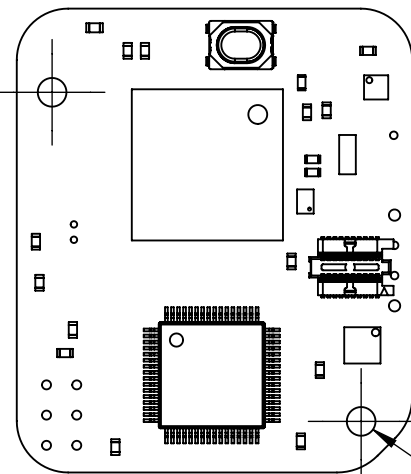
3

2

1



STANDOFF, MALE-FEMALE,  
0-80, 5/32MM LG, 1/8 HEX, SS, 2X



**PCBA, DRS USB Interface**  
APPROX MASS: 4g

**PCBA, DRS USBC Adapter**  
APPROX MASS: 3g

Product Export Classification  
Control Number(ECCN):  
60/30Hz 6A003.b.4.b  
9Hz: 6A993  
  
This document does not  
contain export-controlled  
technology.

UNLESS OTHERWISE SPECIFIED DIM ARE IN MILLIMETERS	
X ± 2.5 mm	ANGLES X ± 1°
X.X ± 0.3 mm	X.X ± 0.5°
X.XX ± 0.13 mm	
THIRD ANGLE PROJECTION	
DO NOT SCALE DRAWING	

**PROPRIETARY AND CONFIDENTIAL**  
THE INFORMATION CONTAINED IN THIS DRAWING IS THE SOLE  
PROPERTY OF SIERRA OLYMPIA TECHNOLOGIES, INC. ANY  
REPRODUCTION IN PART OR AS A WHOLE WITHOUT THE WRITTEN  
PERMISSION OF SIERRA OLYMPIA TECHNOLOGIES, INC. IS PROHIBITED.

MATERIAL: N/A

FINISH: N/A

CAD CONTROLLED PART. THE NOMINAL PART GEOMETRY IS CONTROLLED BY  
THE 3D CAD PART FILE.

DESCRIPTION: Mechanical ICD Viento-10 USB	
SIZE <b>B</b>	DRAWN BY: D. KAMINSKI
DRAWING NUMBER: S-D11513	SHEET 4 OF 5 Rev. E

4

3

2

1

TABLE 1

PART NUMBER	DESCRIPTION	WEIGHT (g)	LENS MOUNT	SEE DRS ICD FOR LENS DIMENSIONS
SL-T5-6624-A10-H	Viento 10 USB, 640 x 512, 10 deg HFOV, 35mm, 60Hz, M34	146	M34	1027621-L1#0
SL-T5-6614-A12-H	Viento 10 USB, 640 x 512, 12 deg HFOV, 30mm, 60Hz	84	M24	1027621-LD#0
SL-T5-6604-A18-H	Viento 10 USB, 640 x 512, 18 deg HFOV, 20mm, 60Hz	57	M19	1027621-L3#0
SL-T5-6604-A25-H	Viento 10 USB, 640 x 512, 25 deg HFOV, 15mm, 60Hz	54	M19	1027621-L6#0
SL-T5-6614-A40-H	Viento 10 USB, 640 x 512, 40 deg HFOV, 9.3mm, 60Hz	67	M24	1027621-LH#0
SL-T5-6604-A50-H	Viento 10 USB, 640 x 512, 50 deg HFOV, 7.7mm, 60Hz	49	M19	1027621-LA#0
SL-T5-6604-A70-H	Viento 10 USB, 640 x 512, 70 deg HFOV, 5.5mm, 60Hz	51	M19	1027621-LM#0
SL-T5-6604-A90-H	Viento 10 USB, 640 x 512, 90 deg HFOV, 4.3mm, 60Hz	52	M19	1027621-LN#0
SL-T5-6624-N10-H	Viento 10 USB, 640 x 512, 10 deg HFOV, NO LENS, 60Hz, M34	44	M34	1027621-01#0
SL-T5-6604-N18-H	Viento 10 USB, 640 x 512, 18 deg HFOV, NO LENS, 60Hz	39	M19	1027621-03#0
SL-T5-6604-N25-H	Viento 10 USB, 640 x 512, 25 deg HFOV, NO LENS, 60Hz	39	M19	1027621-06#0
SL-T5-6604-N50-H	Viento 10 USB, 640 x 512, 50 deg HFOV, NO LENS, 60Hz	39	M19	1027621-0A#0
SL-T5-6604-N70-H	Viento 10 USB, 640 x 512, 70 deg HFOV, NO LENS, 60Hz	39	M19	1027621-0M#0
SL-T5-6604-N90-H	Viento 10 USB, 640 x 512, 90 deg HFOV, NO LENS, 60Hz	39	M19	1027621-0N#0
SL-T5-6924-A10-H	Viento 10 USB, 640 x 512, 10 deg HFOV, 35mm, 9Hz, M34	146	M34	1027621-L1#0
SL-T5-6914-A12-H	Viento 10 USB, 640 x 512, 12 deg HFOV, 30mm, 9Hz	84	M24	1027621-LD#0
SL-T5-6904-A18-H	Viento 10 USB, 640 x 512, 18 deg HFOV, 20mm, 9Hz	57	M19	1027621-L3#0
SL-T5-6904-A25-H	Viento 10 USB, 640 x 512, 25 deg HFOV, 15mm, 9Hz	54	M19	1027621-L6#0
SL-T5-6914-A40-H	Viento 10 USB, 640 x 512, 40 deg HFOV, 9.3mm, 9Hz	67	M24	1027621-LH#0
SL-T5-6904-A50-H	Viento 10 USB, 640 x 512, 50 deg HFOV, 7.7mm, 9Hz	49	M19	1027621-LA#0
SL-T5-6904-A70-H	Viento 10 USB, 640 x 512, 70 deg HFOV, 5.5mm, 9Hz	51	M19	1027621-LM#0
SL-T5-6904-A90-H	Viento 10 USB, 640 x 512, 90 deg HFOV, 4.3mm, 9Hz	52	M19	1027621-LN#0
SL-T5-6924-N10-H	Viento 10 USB, 640 x 512, 10 deg HFOV, NO LENS, 9Hz, M34	44	M34	1027621-01#0
SL-T5-6904-N18-H	Viento 10 USB, 640 x 512, 18 deg HFOV, NO LENS, 9Hz	39	M19	1027621-03#0
SL-T5-6904-N25-H	Viento 10 USB, 640 x 512, 25 deg HFOV, NO LENS, 9Hz	39	M19	1027621-06#0
SL-T5-6904-N50-H	Viento 10 USB, 640 x 512, 50 deg HFOV, NO LENS, 9Hz	39	M19	1027621-0A#0
SL-T5-6904-N70-H	Viento 10 USB, 640 x 512, 70 deg HFOV, NO LENS, 9Hz	39	M19	1027621-0M#0
SL-T5-6904-N90-H	Viento 10 USB, 640 x 512, 90 deg HFOV, NO LENS, 9Hz	39	M19	1027621-0N#0

TABLE 2

TENUM 640 PART NUMBER CONFIGURATION

PART NUMBER = 1027621 + [6 DIGIT CONFIGURATION] + 0

LENS	LENS HFOV/LENS MOUNT	SHUTTER	FEATURE BOARD	FRAME RATE	P2 OR P3
0 = NO LENS	1 = 10 °/M34	1 = SHUTTER	0 = NO FEATURE BOARD	6 = 60 Hz	0 = P2
L = LENS	3 = L8 ° /M19		1 = FEATURE BOARD	9 = 9 Hz	1 = P3
	6 = 25 °/M19				
	A = 50 ° /M19				
	D = 12°/M24				
	H = 40 °/M24				
	M = 70 °/M19				
	N = 90 °/M19				

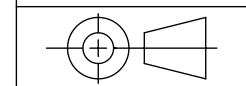
Product Export Classification Control Number(ECCN): 60/30Hz 6A003.b.4.b 9Hz: 6A993

This document does not contain export-controlled technology.

UNLESS OTHERWISE SPECIFIED DIM ARE IN MILLIMETERS

X ± 2.5 mm	ANGLES X ± 1°
X.X ± 0.3 mm	X.X ± 0.5°
X.XX ± 0.13 mm	

THIRD ANGLE PROJECTION



DO NOT SCALE DRAWING

**PROPRIETARY AND CONFIDENTIAL**  
 THE INFORMATION CONTAINED IN THIS DRAWING IS THE SOLE PROPERTY OF SIERRA OLYMPIA TECHNOLOGIES, INC. ANY REPRODUCTION IN PART OR AS A WHOLE WITHOUT THE WRITTEN PERMISSION OF SIERRA OLYMPIA TECHNOLOGIES, INC. IS PROHIBITED.

MATERIAL: N/A

FINISH: N/A

CAD CONTROLLED PART. THE NOMINAL PART GEOMETRY IS CONTROLLED BY THE 3D CAD PART FILE.



DESCRIPTION: Mechanical ICD Viento-10 USB

SIZE: <b>B</b>	DRAWN BY: D. KAMINSKI	SHEET 5 OF 5
----------------	-----------------------	--------------

DRAWING NUMBER: S-D11513	Rev. E
--------------------------	--------