

4

3

2

1

NOTES:

1. REFER TO DRS MECHANICAL ICD, 1028737 TENUM640 MECHANICAL ICD, FOR DETAILED SENSOR CORE DIMENSIONS AND MOUNTING INFORMATION
2. ESTIMATED POWER DRAW IS 4.6W STEADY-STATE. CONDUCTIVE OR CONVECTIVE THERMAL DISSIPATION IS RECOMMENDED.
3. SEE SHEET 3 FOR CONFIGURATIONS, LENS POSITION RELATIVE TO CAMERA BODY WILL VARY WITH FOCUS.
4. J2 GENLOCK  
MOLEX "PICOBLADE" 2-PIN, 1.25MM PITCH  
MATING CONNECTOR HOUSING: MOLEX 0510210200  
CONNECTOR TERMINALS: MOLEX 0500588100 (28-32 AWG)  
SEE SOTI APPLICATION NOTE EAN03 FOR COMMAND MODES, SIGNAL LEVELS, AND TIMING
5. FFC JUMPER, SAME SIDE CONTACTS, 40 CIRCUITS, .5MM PITCH, GOLD PLATING, RECOMENDED MOLEX PN 0150200429, MAX LENGTH 8IN
6. REFER TO DRS MECHANICAL ICD, 1028737 TENUM640 MECHANICAL ICD, FOR DETAILED SENSOR CORE DIMENSIONS AND MOUNTING INFORMATION
7. SCREWS (#2-56, 5-16LG) CAN BE USED FOR MOUNTING

REVISIONS					
ZONE	REV.	DESCRIPTION	ECN	DATE	ENGINEER
	B	ADD BOARD TO BOAD DIMENSION AND CORRECTED TABLE 1 PART NUMBERS	1234	2022/04/27	
	C	ADD NEW PART NUMBERS TO TABLE 1, UPDATE FORMAT	1437	2023/08/14	D.KAMINSKI

33.9

26.8

23

40.4

28.9

5 FFC JUMPER

SENSOR CORE

A

3

PLEORA  
iPORT NTX-GIGE  
EMBEDDED INTERFACE 900-6003

GIGABIT ETHERNET (1000bASE-T)  
POWER OVER ETHERNET (POE)

RESERVED

4 GENLOCK

Pin  
1 GENLOCK  
2 GND

DETAIL A  
SCALE 2:1

5 J1 FFC

SOTI SENSOR INTERFACE PCBA

42.2

36.5

RESERVED

SOTI GIGE INTERFACE PCBA

A

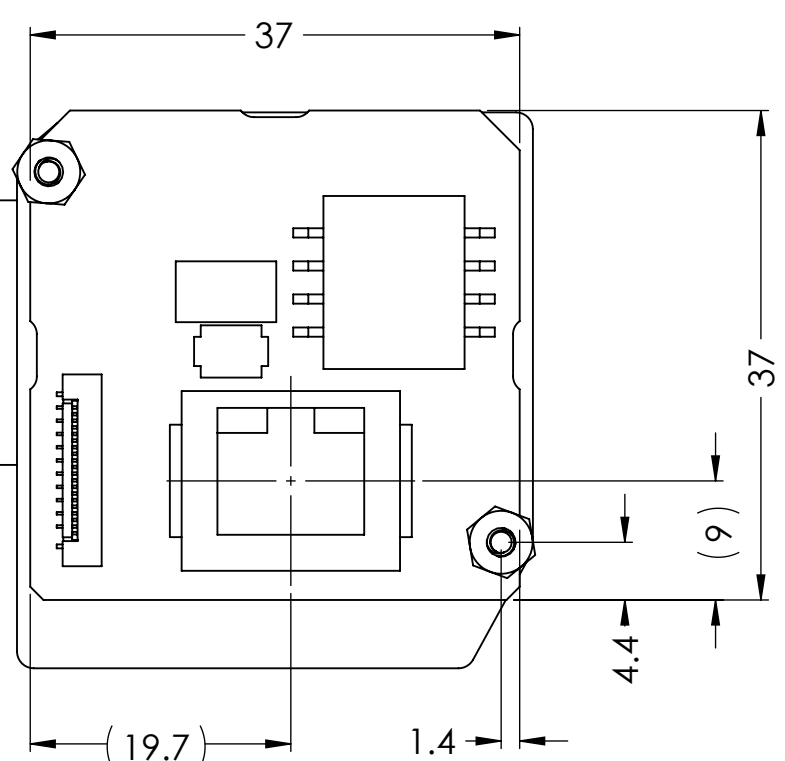
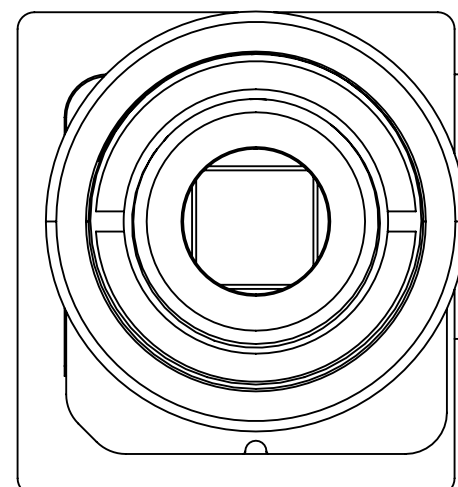
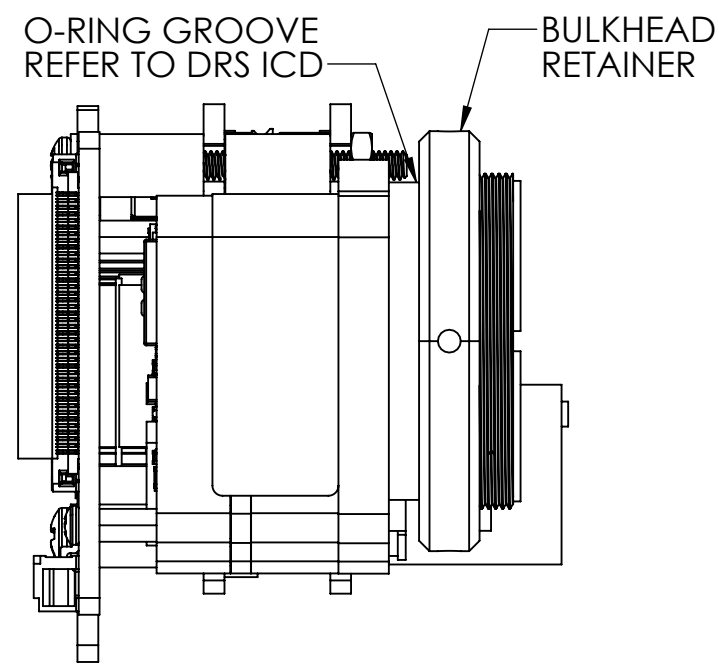
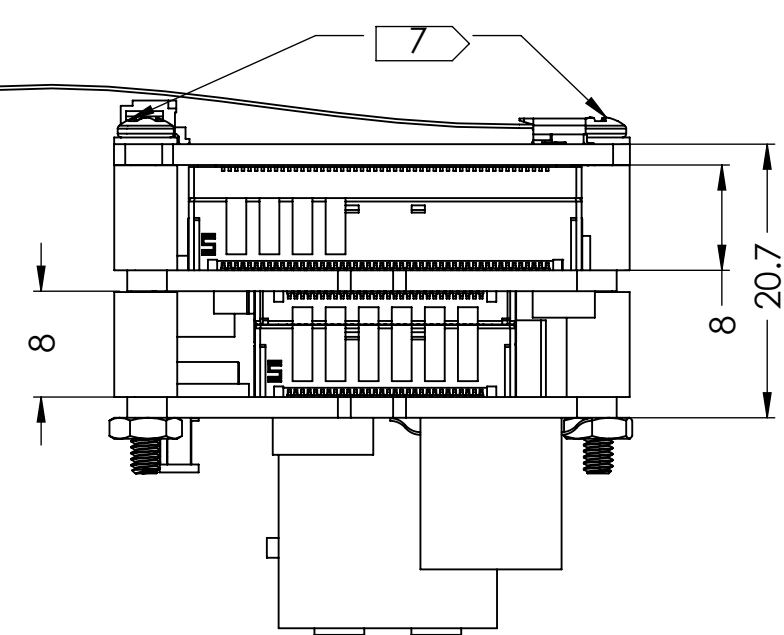
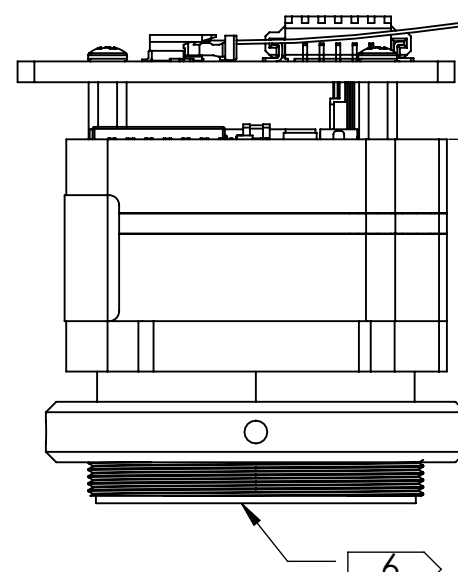
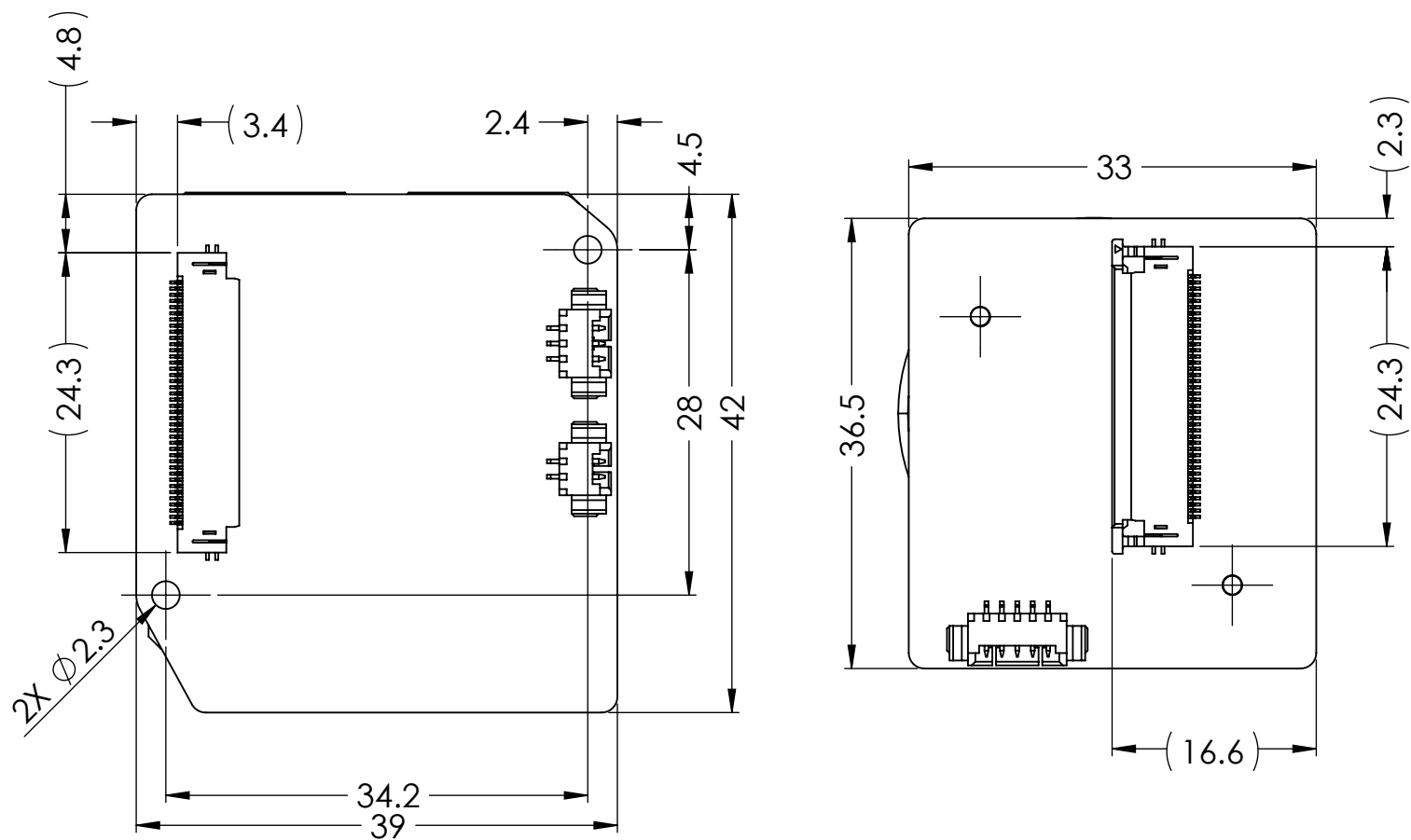
Product Export Classification Control Number(ECCN): 60/30Hz: 6A003.b.4.b 9Hz: 6A993  This document does not contain export-controlled technology.	<b>PROPRIETARY AND CONFIDENTIAL</b>  THE INFORMATION CONTAINED IN THIS DRAWING IS THE SOLE PROPERTY OF SIERRA OLYMPIA TECHNOLOGIES, INC. ANY REPRODUCTION IN PART OR AS A WHOLE WITHOUT THE WRITTEN PERMISSION OF SIERRA OLYMPIA TECHNOLOGIES, INC. IS PROHIBITED.	DIMENSIONS ARE IN MILLIMETERS TOLERANCES: +/- 0.254mm (0,01in) +/- 1deg EXCEPT WHERE NOTED.	CAD CONTROLLED PART, THE NOMINAL PART GEOMETRY IS CONTROLLED BY THE 3D CAD PART FILE. DO NOT SCALE DRAWING	 <b>SIERRA-OLYMPIA TECHNOLOGIES INC.</b>
		MATERIAL:  FINISH:	N/A  N/A	
COMMENTS:		SIZE <b>B</b>	DRAWN BY: D.KAMINSKI	SHEET 1 OF 3
		DRAWING NUMBER: S-D11514		Rev. C

4

3

2

1



Product Export Classification Control Number(ECCN): 60/30Hz: 6A003.b.4.b 9Hz: 6A993  This document does not contain export-controlled technology.	<b>PROPRIETARY AND CONFIDENTIAL</b>  THE INFORMATION CONTAINED IN THIS DRAWING IS THE SOLE PROPERTY OF SIERRA OLYMPIA TECHNOLOGIES, INC. ANY REPRODUCTION IN PART OR AS A WHOLE WITHOUT THE WRITTEN PERMISSION OF SIERRA OLYMPIA TECHNOLOGIES, INC. IS PROHIBITED.  COMMENTS:	DIMENSIONS ARE IN MILLIMETERS TOLERANCES: +/- 0.254mm (0,01in) +/- 1deg EXCEPT WHERE NOTED.	CAD CONTROLLED PART. THE NOMINAL PART GEOMETRY IS CONTROLLED BY THE 3D CAD PART FILE.  DO NOT SCALE DRAWING	<b>SIERRA-OLYMPIA</b> TECHNOLOGIES INC.
		MATERIAL:  FINISH:	N/A  N/A	
		SIZE: <b>B</b> DRAWING NUMBER: S-D11514	DRAWN BY: D.KAMINSKI SHEET 2 OF 3 Rev. C	

4

3

2

1

4


3

2

1

TABLE 1

PART NUMBER	DESCRIPTION	WEIGHT (g)	SEE DRS ICD FOR LENS DIMENSIONS
SL-T5-6622-A10	Viento 10 GigE, 640 x 512, 10 deg HFOV, 35mm, 60Hz, M34	185	1027621-L110600
SL-T5-6612-A12	Viento 10 GigE 640, 12 deg HFOV, 30mm, 60Hz	123	1027621-LD10600
SL-T5-6602-A18	Viento 10 GigE, 640 x 512, 18 deg HFOV, 20mm, 60Hz	96	1027621-L310600
SL-T5-6602-A25	Viento 10 GigE, 640 x 512, 25 deg HFOV, 15mm, 60Hz	93	1027621-L610600
SL-T5-6612-A40	Viento 10 GigE, 640 x 512, 40 deg HFOV, 9.3mm, 60Hz	106	1027621-LH10600
SL-T5-6602-A50	Viento 10 GigE, 640 x 512, 50 deg HFOV, 7.7mm, 60Hz	88	1027621-LA10600
SL-T5-6602-A70	Viento 10 GigE 640, 70 deg HFOV, 5.5mm, 60Hz	90	1027621-LM10600
SL-T5-6602-A90	Viento 10 GigE 640, 90 deg HFOV, 4.3mm, 60Hz	91	1027621-LN10600
SL-T5-6622-N10	Viento 10 GigE, 640 x 512, 10 deg HFOV, NO LENS, 60Hz, M34	93	1027621-0110600
SL-T5-6602-N18	Viento 10 GigE, 640 x 512, 18 deg HFOV, NO LENS, 60Hz	78	1027621-0310600
SL-T5-6602-N25	Viento 10 GigE, 640 x 512, 25 deg HFOV, NO LENS, 60Hz	78	1027621-0610600
SL-T5-6602-N50	Viento 10 GigE, 640 x 512, 50 deg HFOV, NO LENS, 60Hz	78	1027621-0A10600
SL-T5-6602-N70	Viento 10 GigE 640, 70 deg HFOV, No Lens, 60Hz	78	1027621-0M10600
SL-T5-6602-N90	Viento 10 GigE 640, 90 deg HFOV, No Lens, 60Hz	78	1027621-0N10600
SL-T5-6922-A10	Viento 10 GigE, 640 x 512, 10 deg HFOV, 35mm, 9Hz, M34	185	1027621-L110600
SL-T5-6912-A12	Viento 10 GigE 640, 12 deg HFOV, 30mm, 9Hz	123	1027621-LD10600
SL-T5-6902-A18	Viento 10 GigE, 640 x 512, 18 deg HFOV, 20mm, 9Hz	96	1027621-L310600
SL-T5-6902-A25	Viento 10 GigE, 640 x 512, 25 deg HFOV, 15mm, 9Hz	93	1027621-L610600
SL-T5-6912-A40	Viento 10 GigE, 640 x 512, 40 deg HFOV, 9.3mm, 9Hz	106	1027621-LH10600
SL-T5-6902-A50	Viento 10 GigE, 640 x 512, 50 deg HFOV, 7.7mm, 9Hz	88	1027621-LA10600
SL-T5-6902-A70	Viento 10 GigE 640, 70 deg HFOV, 5.5mm, 9Hz	90	1027621-LM10600
SL-T5-6902-A90	Viento 10 GigE 640, 90 deg HFOV, 4.3mm, 9Hz	91	1027621-LN10600
SL-T5-6922-N10	Viento 10 GigE, 640 x 512, 10 deg HFOV, NO LENS, 9Hz, M34	93	1027621-0110600
SL-T5-6902-N18	Viento 10 GigE, 640 x 512, 18 deg HFOV, NO LENS, 9Hz	78	1027621-0310600
SL-T5-6902-N25	Viento 10 GigE, 640 x 512, 25 deg HFOV, NO LENS, 9Hz	78	1027621-0610600
SL-T5-6902-N50	Viento 10 GigE, 640 x 512, 50 deg HFOV, NO LENS, 9Hz	78	1027621-0A10600
SL-T5-6902-N70	Viento 10 GigE 640, 70 deg HFOV, No Lens, 9Hz	78	1027621-0M10600
SL-T5-6902-N90	Viento 10 GigE 640, 90 deg HFOV, No Lens, 9Hz	78	1027621-0N10600

Product Export Classification Control Number(ECCN): 60/30Hz: 6A003.b.4.b 9Hz: 6A993  This document does not contain export-controlled technology.	<b>PROPRIETARY AND CONFIDENTIAL</b>  THE INFORMATION CONTAINED IN THIS DRAWING IS THE SOLE PROPERTY OF SIERRA OLYMPIA TECHNOLOGIES, INC. ANY REPRODUCTION IN PART OR AS A WHOLE WITHOUT THE WRITTEN PERMISSION OF SIERRA OLYMPIA TECHNOLOGIES, INC. IS PROHIBITED.  COMMENTS:	DIMENSIONS ARE IN MILLIMETERS TOLERANCES: +/- 0.254mm (0.01in) +/- 1deg EXCEPT WHERE NOTED.  MATERIAL:  FINISH:  N/A  N/A	CAD CONTROLLED PART. THE NOMINAL PART GEOMETRY IS CONTROLLED BY THE 3D CAD PART FILE.  DO NOT SCALE DRAWING	 <b>SIERRA-OLYMPIA</b> TECHNOLOGIES INC.
DESCRIPTION: ICD Viento-10 GigE				
SIZE <b>B</b>	DRAWN BY: D.KAMINSKI	SHEET 3 OF 3		
DRAWING NUMBER: S-D11514			Rev. C	

4

3

2

1