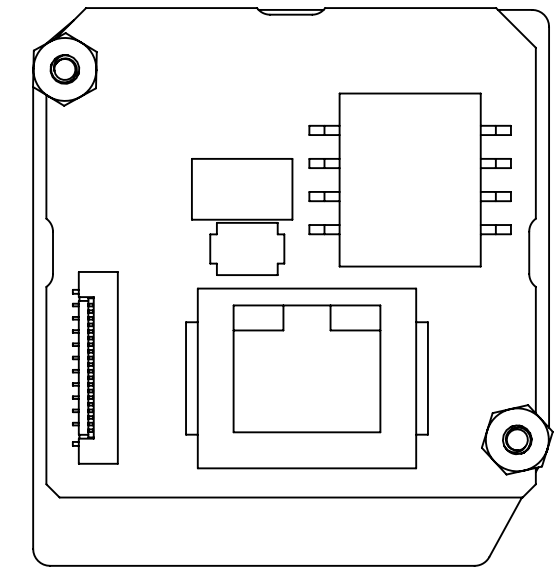
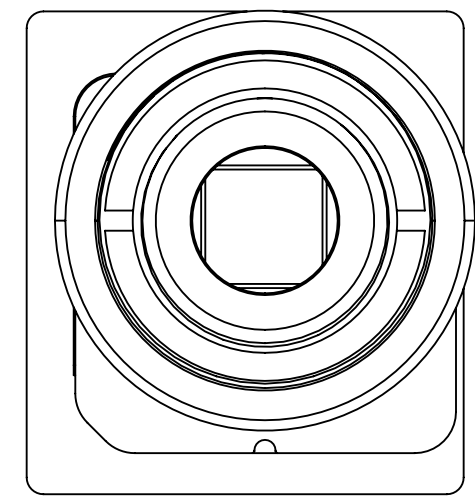
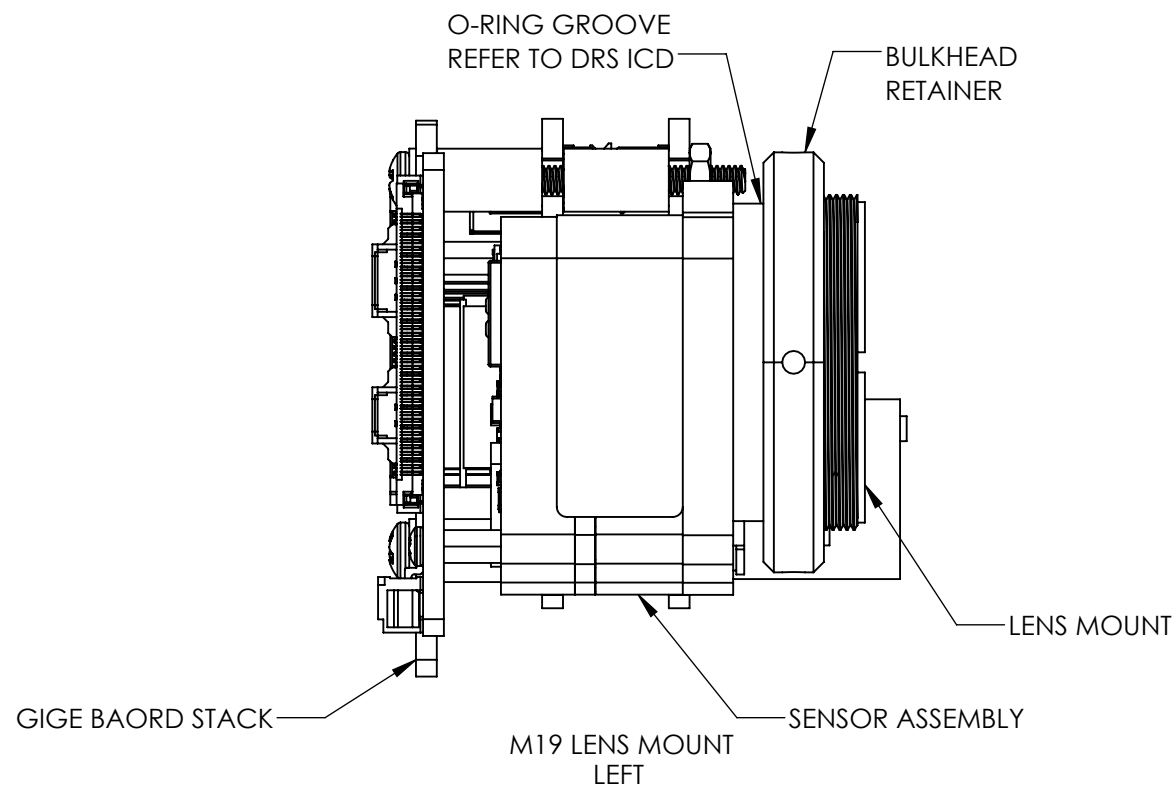
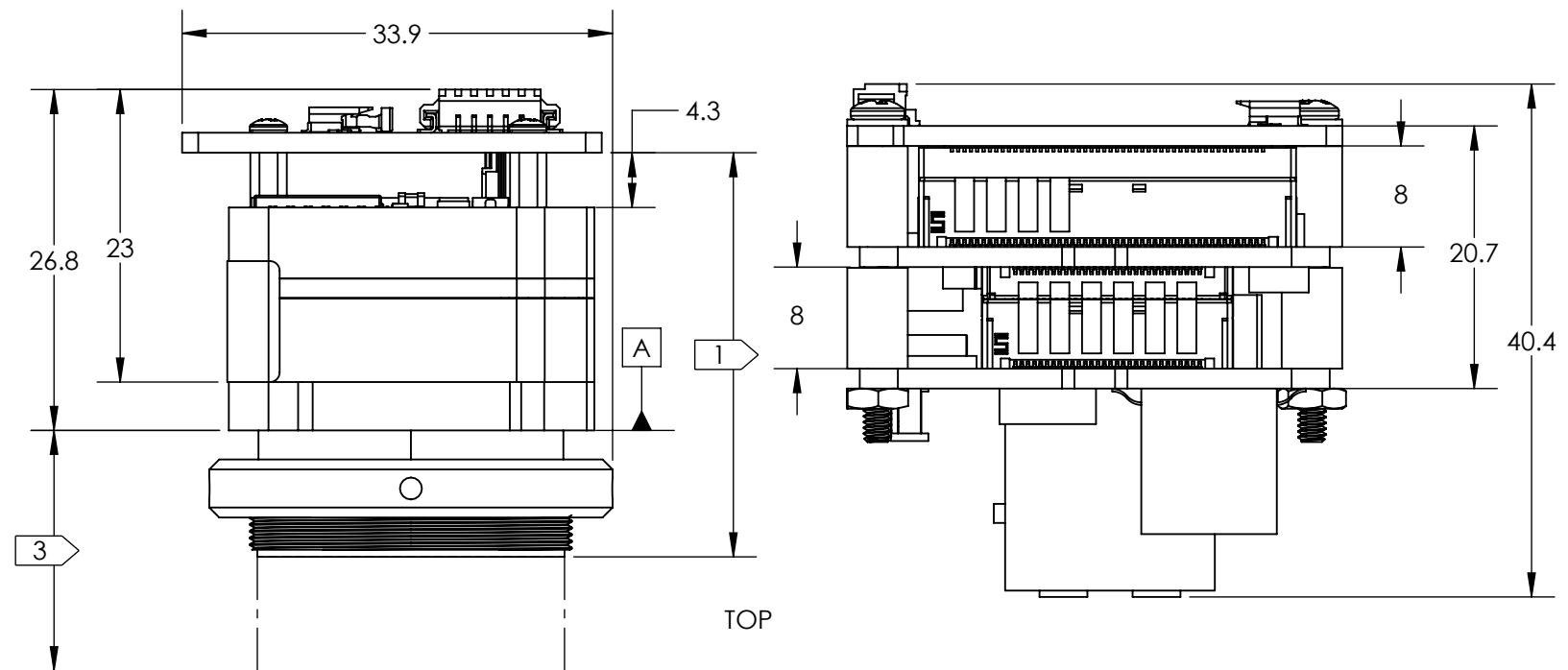


REVISIONS					
ZONE	REV.	DESCRIPTION	ECO	DATE	ENGINEER
	C	ADD NEW PART NUMBERS TO TABLE 1, UPDATE FORMAT	1437	2023-08-14	D. KAMINSKI
	D	UPDATE TABLE 1 DRS PNS, UPDATE FORMAT	1780	2024-08-20	D. KAMINSKI

NOTES:

- 1. REFER TO DRS MECHANICAL ICD, 1028737 TENUM640 MECHANICAL ICD, FOR DETAILED SENSOR CORE DIMENSIONS AND MOUNTING INFORMATION
- 2. ESTIMATED POWER DRAW IS 4.6W STEADY-STATE. CONDUCTIVE OR CONVECTIVE THERMAL DISSIPATION IS RECOMMENDED.
- 3. SEE SHEET 3 FOR CONFIGURATIONS, LENS POSITION RELATIVE TO CAMERA BODY WILL VARY WITH FOCUS. REFERTO DRS MECHANICAL ICD, 1028737 TENUM640 MECHANICAL ICD, FOR LENS DIMENSIONS
- 4. J2 GENLOCK
MOLEX "PICOBLADE" 2-PIN, 1.25MM PITCH
MATING CONNECTOR HOUSING: MOLEX 0510210200
CONNECTOR TERMINALS: MOLEX 0500588100 (28-32 AWG)
SEE SOTI APPLICATION NOTE EAN03 FOR COMMAND MODES, SIGNAL LEVELS, AND TIMING
- 5. FFC JUMPER, SAME SIDE CONTACTS, 40 CIRCUITS, .5MM PITCH, GOLD PLATING, RECOMMENDED MOLEX PN 0150200429, MAX LENGTH 8IN
- 6. SCREWS (#2-56, 5-16LG) CAN BE USED FOR MOUNTING



FRONT

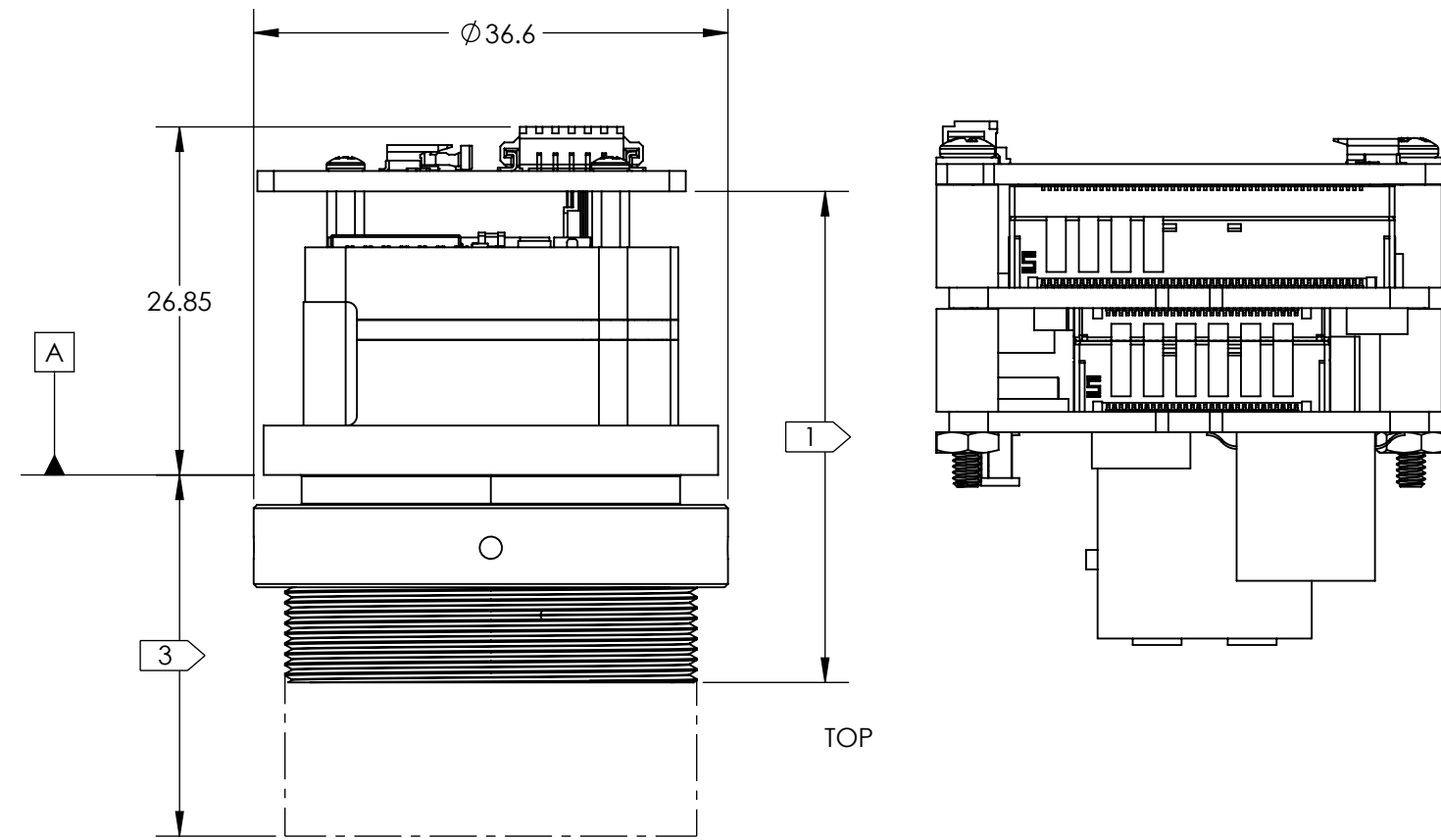
Product Export Classification Control Number(ECCN): 60/30Hz 6A003.b.4.b 9Hz: 6A993 This document does not contain export-controlled technology.	UNLESS OTHERWISE SPECIFIED DIM ARE IN MILLIMETERS		PROPRIETARY AND CONFIDENTIAL THE INFORMATION CONTAINED IN THIS DRAWING IS THE SOLE PROPERTY OF SIERRA OLYMPIA TECHNOLOGIES, INC. ANY REPRODUCTION IN PART OR AS A WHOLE WITHOUT THE WRITTEN PERMISSION OF SIERRA OLYMPIA TECHNOLOGIES, INC. IS PROHIBITED. MATERIAL: N/A FINISH: N/A CAD CONTROLLED PART. THE NOMINAL PART GEOMETRY IS CONTROLLED BY THE 3D CAD PART FILE.	SIERRA-OLYMPIA TECHNOLOGIES INC. DESCRIPTION: ICD Viento-10 GigE	
	X ± 2.5 mm	ANGLES X ± 1°			
	X.X ± 0.3 mm	X.X ± 0.5°		DRAWING NUMBER: S-D11514 Rev. D	
	X.XX ± 0.13 mm	X.X ± 0.5°			
THIRD ANGLE PROJECTION					
DO NOT SCALE DRAWING					

4

3

2

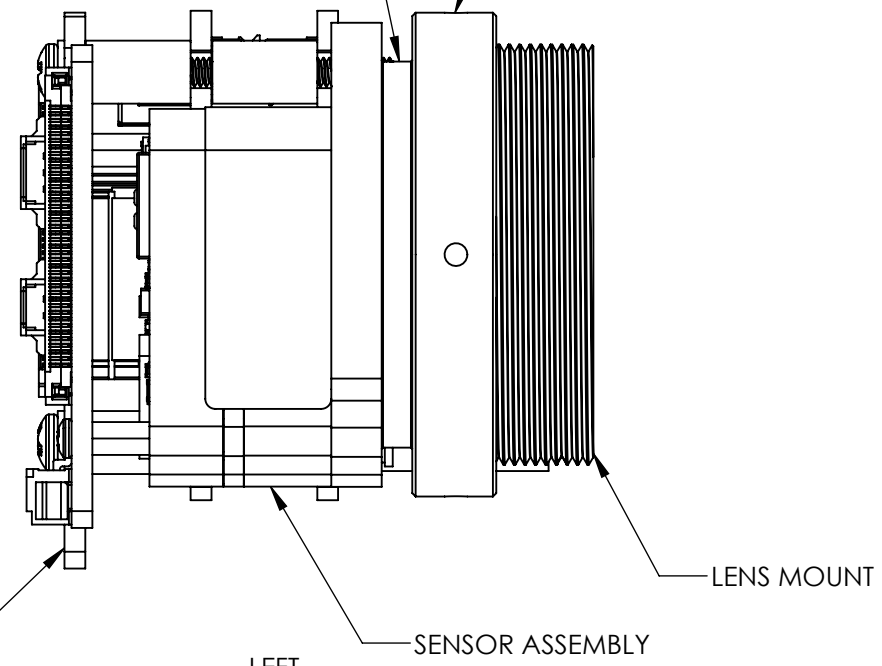
1



TOP

O-RING GROOVE
REFER TO DRS ICD

BULKHEAD
RETAINER

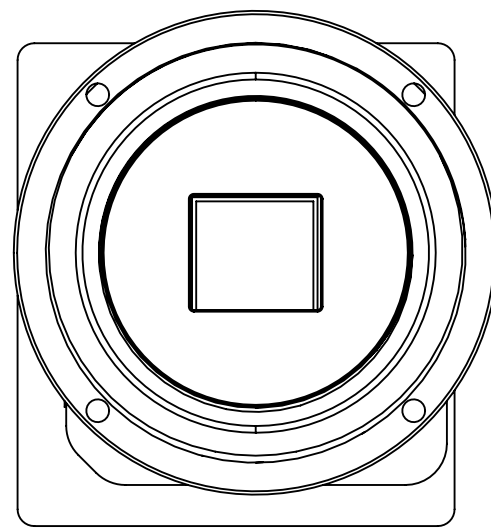


GIGE BOARD STACK

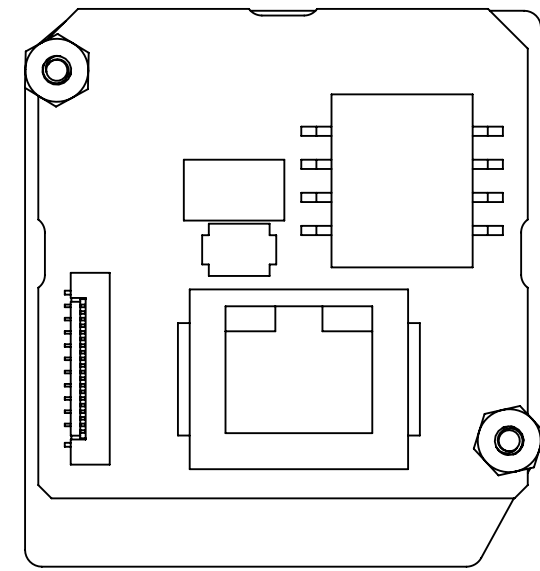
LEFT
M24 LENS MOUNT

SENSOR ASSEMBLY

LENS MOUNT



FRONT



Product Export Classification Control Number(ECCN): 60/30Hz 6A003.b.4.b 9Hz: 6A993 This document does not contain export-controlled technology.	UNLESS OTHERWISE SPECIFIED DIM ARE IN MILLIMETERS		PROPRIETARY AND CONFIDENTIAL THE INFORMATION CONTAINED IN THIS DRAWING IS THE SOLE PROPERTY OF SIERRA OLYMPIA TECHNOLOGIES, INC. ANY REPRODUCTION IN PART OR AS A WHOLE WITHOUT THE WRITTEN PERMISSION OF SIERRA OLYMPIA TECHNOLOGIES, INC. IS PROHIBITED.	DESCRIPTION: ICD Viento-10 GigE			
	X ± 2.5 mm	ANGLES X ± 1°				MATERIAL: N/A	
	X.X ± 0.3 mm	X ± 1°		FINISH: N/A	SIZE B	DRAWN BY: D. KAMINSKI	SHEET 2 OF 5
	X.XX ± 0.13 mm	X.X ± 0.5°		THIRD ANGLE PROJECTION	DRAWING NUMBER: S-D11514		
		DO NOT SCALE DRAWING	CAD CONTROLLED PART. THE NOMINAL PART GEOMETRY IS CONTROLLED BY THE 3D CAD PART FILE.				

SIERRA-OLYMPIA
TECHNOLOGIES INC.

DRAWN BY:
D. KAMINSKI

SHEET 2 OF 5

DRAWING NUMBER:
S-D11514

Rev. D

4

3

2

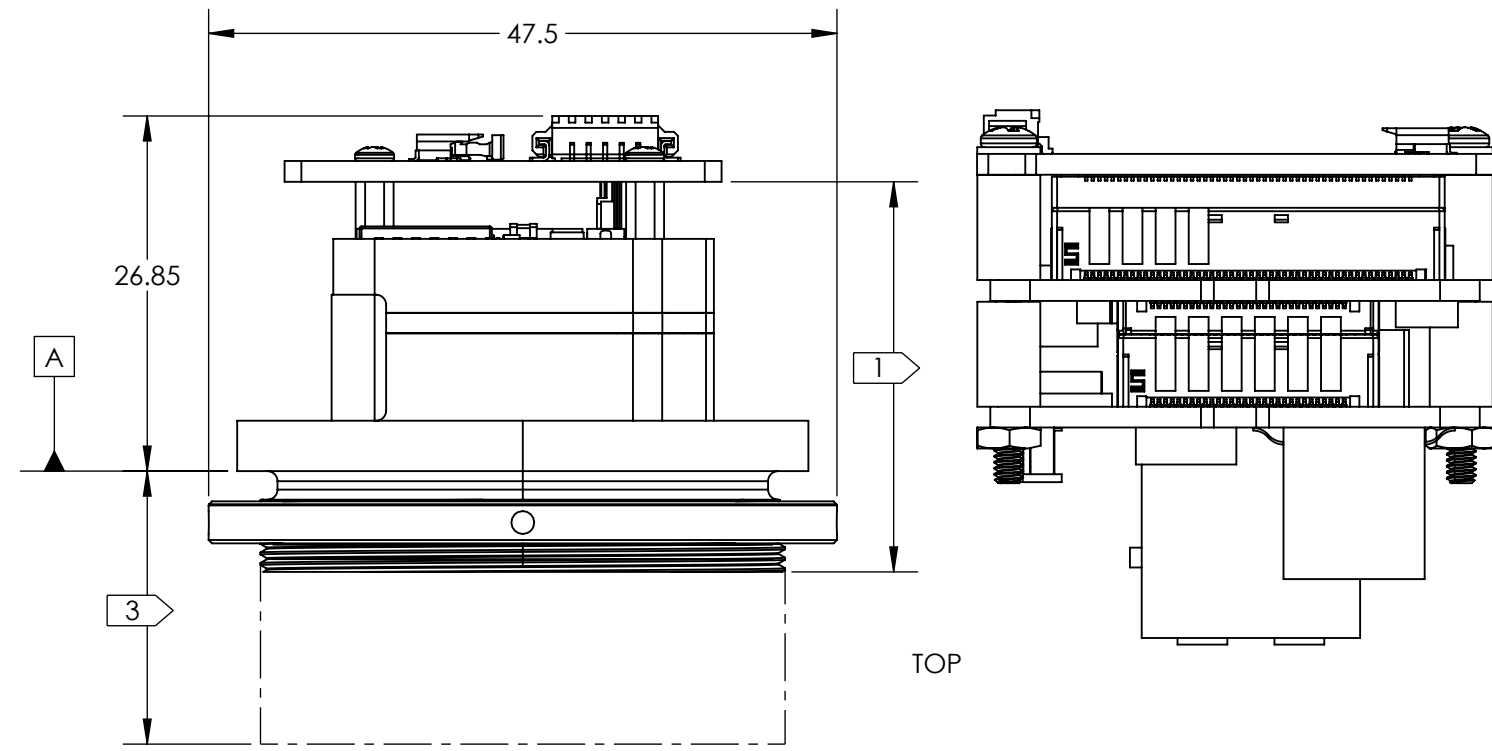
1

4

3

2

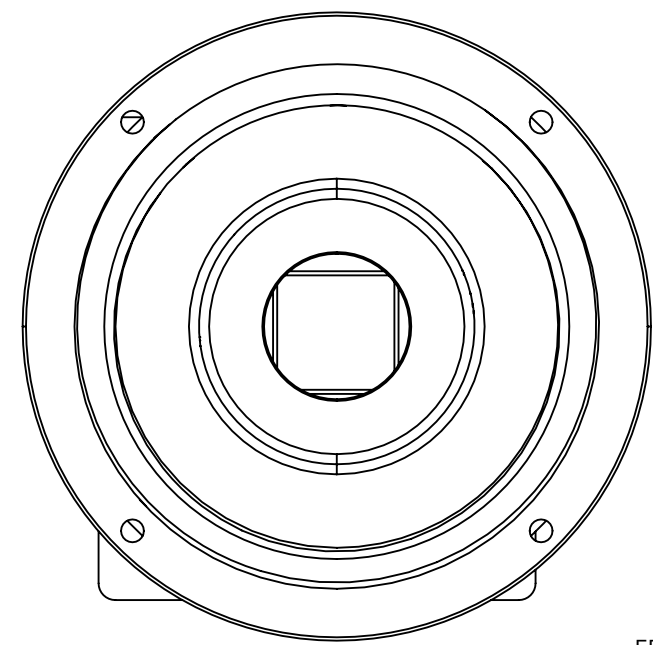
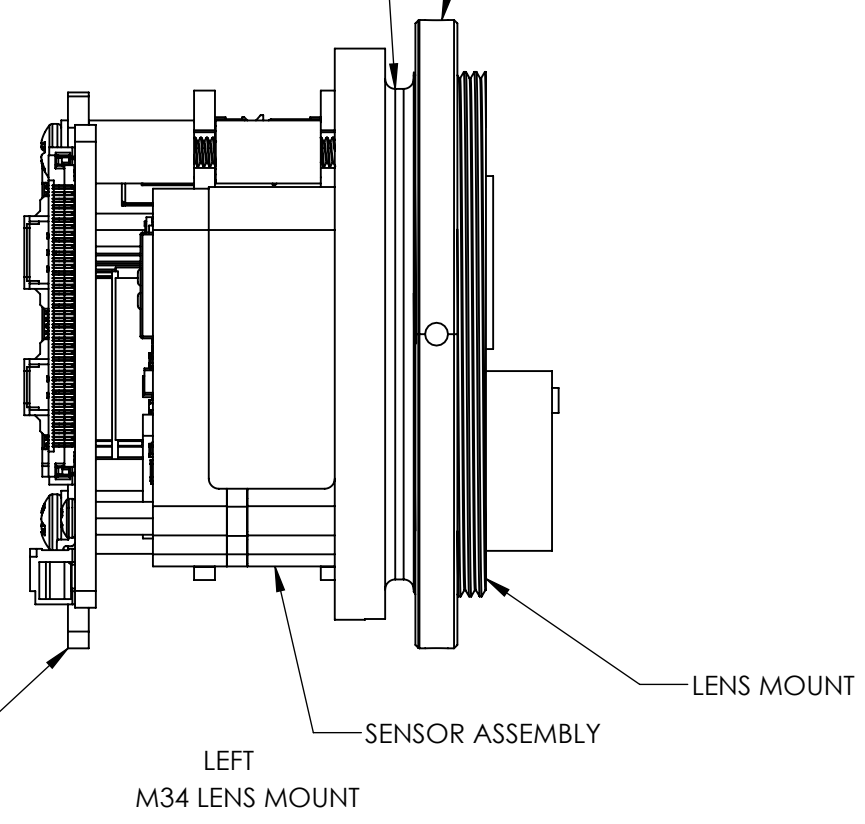
1



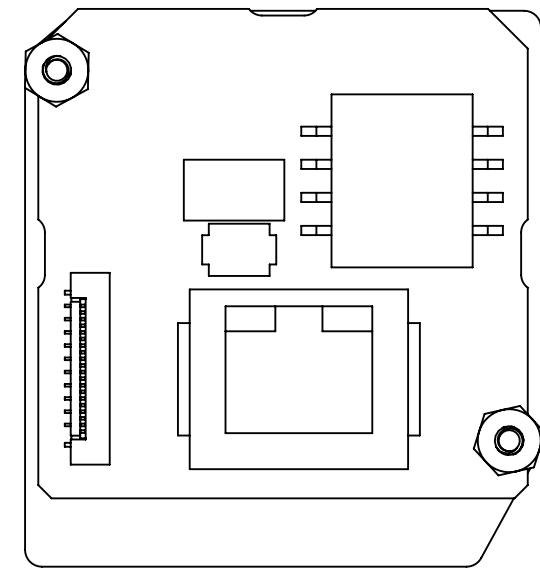
TOP

O-RING GROOVE
REFER TO DRS ICD

BULKHEAD
RETAINER



FRONT



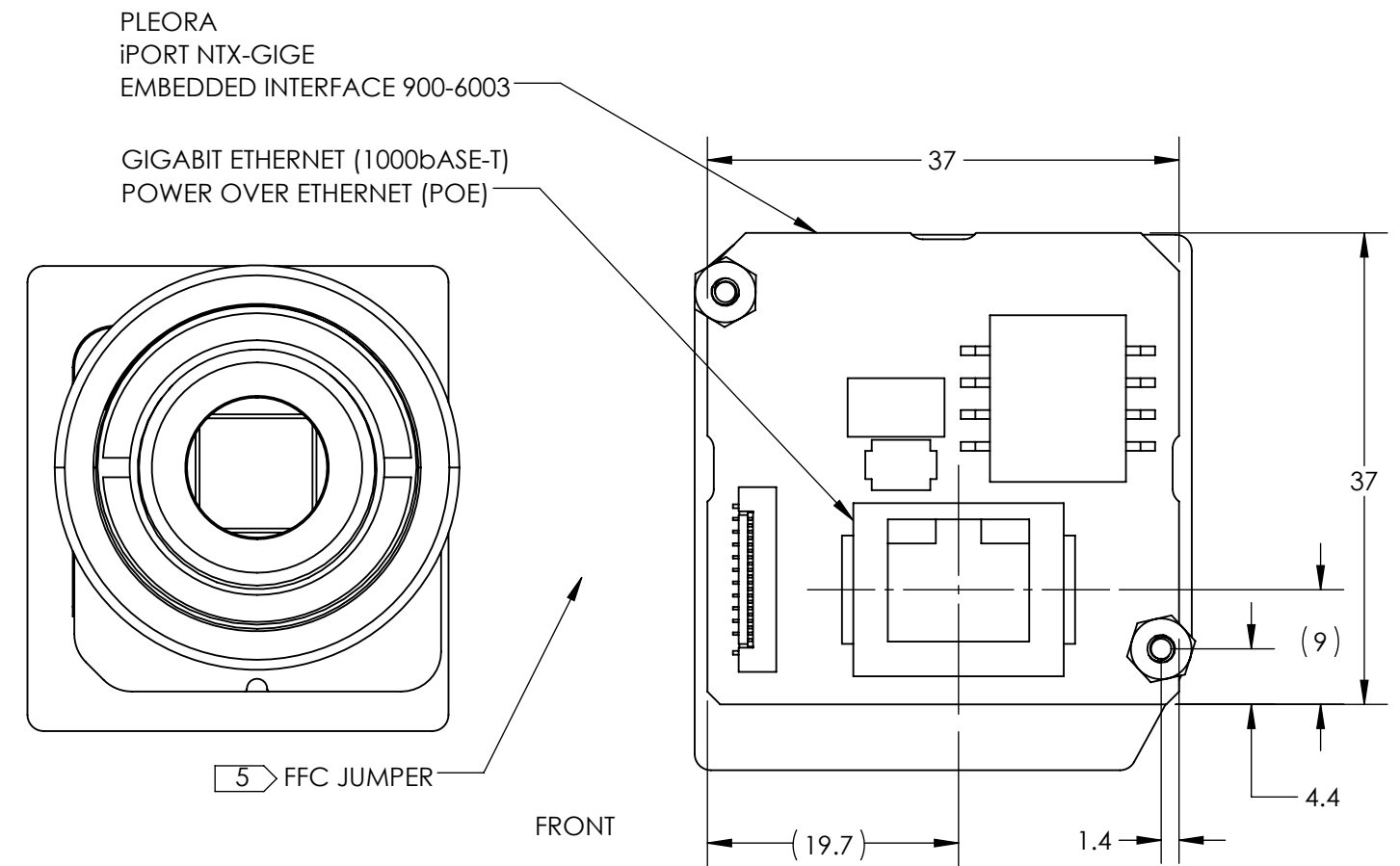
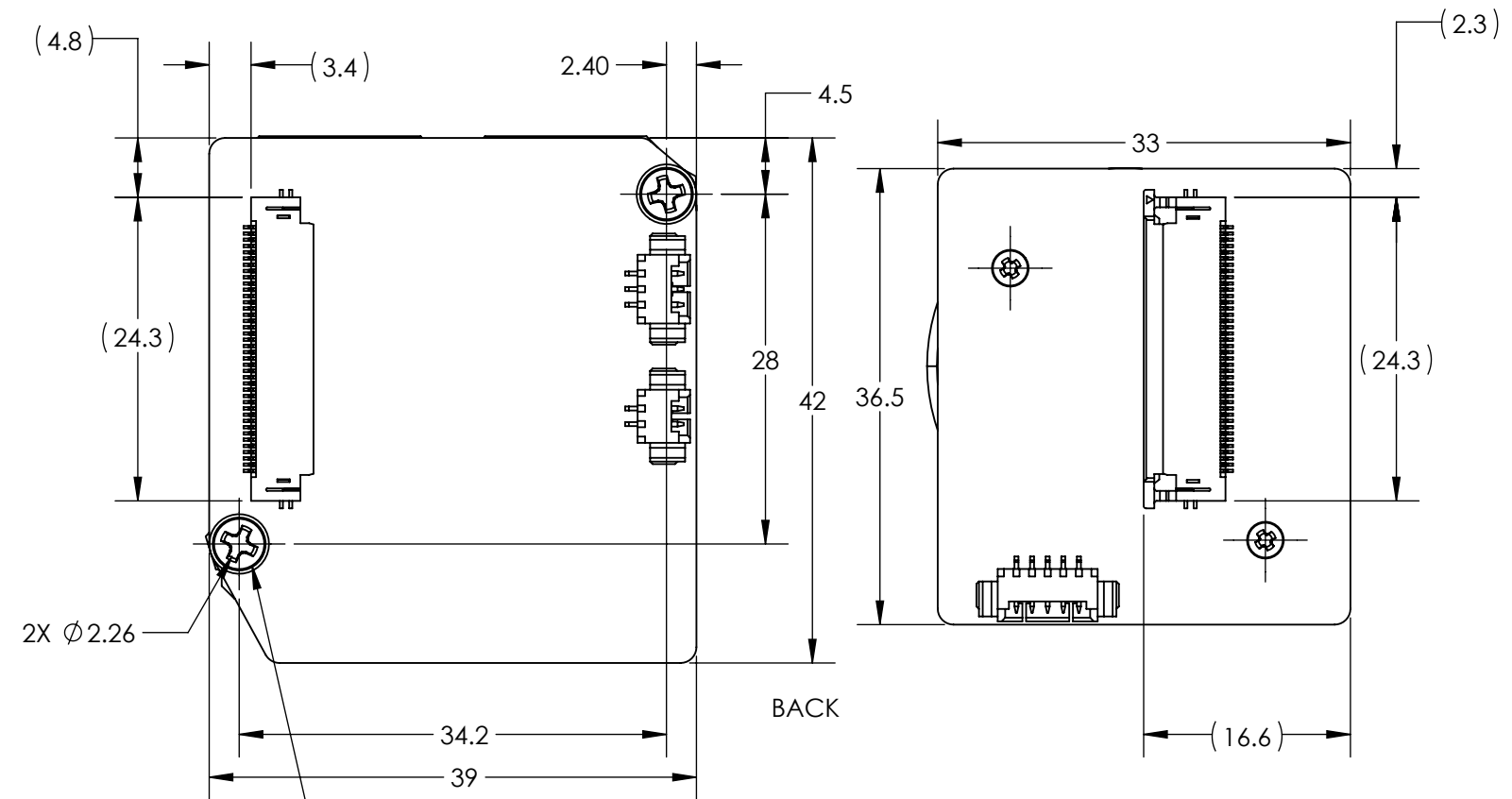
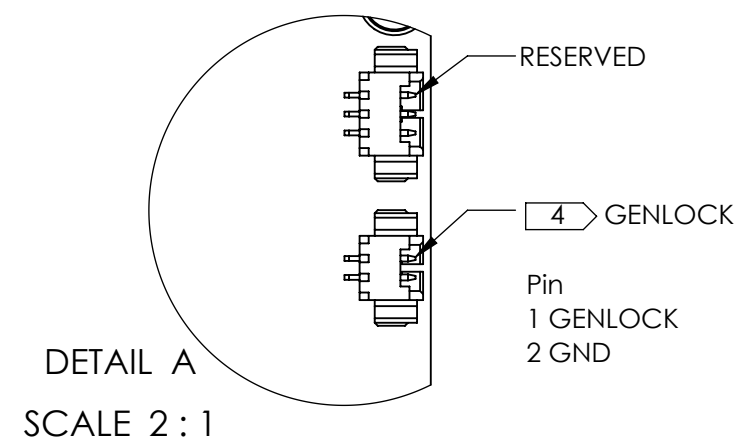
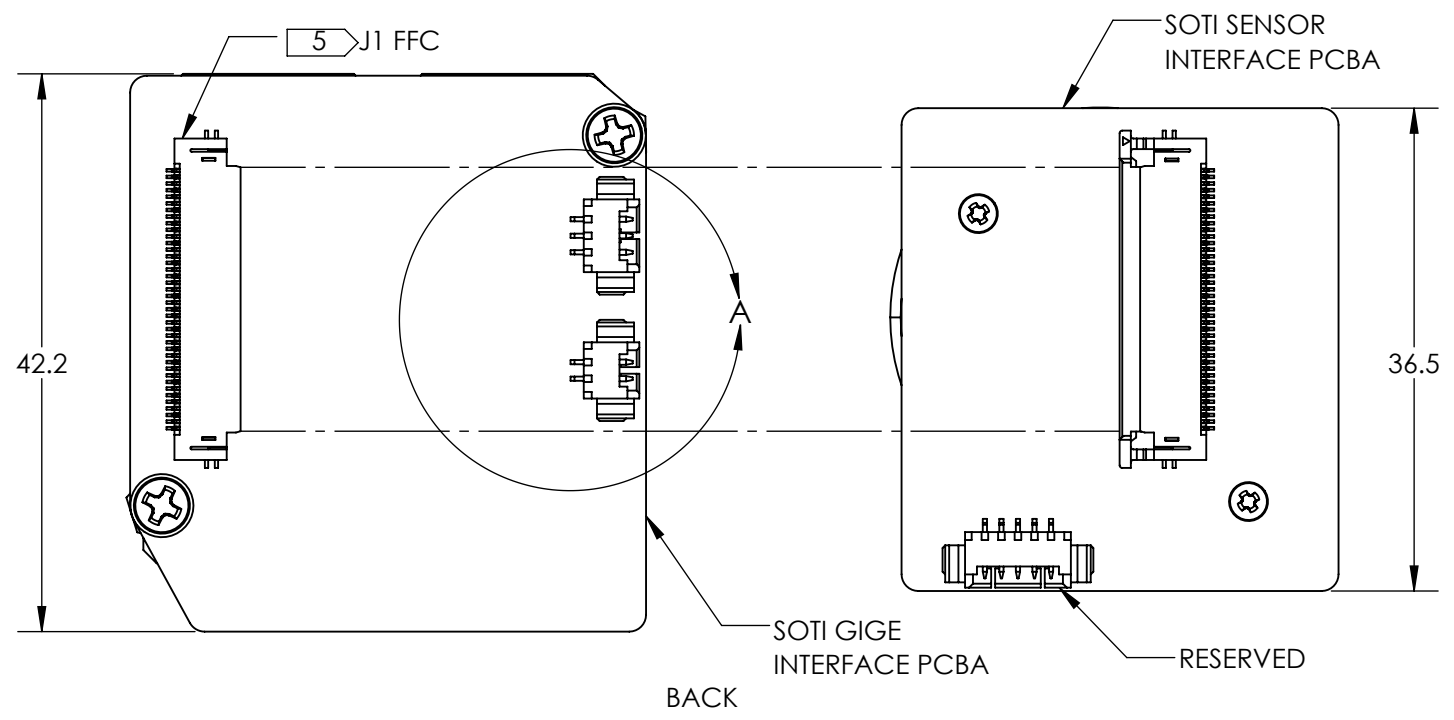
Product Export Classification Control Number(ECCN): 60/30Hz 6A003.b.4.b 9Hz: 6A993 This document does not contain export-controlled technology.	UNLESS OTHERWISE SPECIFIED DIM ARE IN MILLIMETERS		PROPRIETARY AND CONFIDENTIAL THE INFORMATION CONTAINED IN THIS DRAWING IS THE SOLE PROPERTY OF SIERRA OLYMPIA TECHNOLOGIES, INC. ANY REPRODUCTION IN PART OR AS A WHOLE WITHOUT THE WRITTEN PERMISSION OF SIERRA OLYMPIA TECHNOLOGIES, INC. IS PROHIBITED.		MATERIAL: N/A		DESCRIPTION: ICD Viento-10 GigE		
	X ± 2.5 mm	ANGLES X ± 1°							
	X.X ± 0.3 mm	X.X ± 0.5°	THIRD ANGLE PROJECTION		FINISH: N/A		SIZE B	DRAWN BY: D. KAMINSKI	SHEET 3 OF 5
			DO NOT SCALE DRAWING		CAD CONTROLLED PART. THE NOMINAL PART GEOMETRY IS CONTROLLED BY THE 3D CAD PART FILE.		DRAWING NUMBER: S-D11514		Rev. D

4

3

2

1



Product Export Classification Control Number (ECCN): 60/30Hz 6A003.b.4.b 9Hz: 6A993 This document does not contain export-controlled technology.	UNLESS OTHERWISE SPECIFIED DIM ARE IN MILLIMETERS		PROPRIETARY AND CONFIDENTIAL THE INFORMATION CONTAINED IN THIS DRAWING IS THE SOLE PROPERTY OF SIERRA OLYMPIA TECHNOLOGIES, INC. ANY REPRODUCTION IN PART OR AS A WHOLE WITHOUT THE WRITTEN PERMISSION OF SIERRA OLYMPIA TECHNOLOGIES, INC. IS PROHIBITED.		MATERIAL: N/A	DESCRIPTION: ICD Viento-10 GigE	
	X ± 2.5 mm	ANGLES X ± 1°					
	X.X ± 0.3 mm	X.X ± 0.5°	FINISH: N/A		SIZE B	DRAWN BY: D. KAMINSKI	SHEET 4 OF 5
	THIRD ANGLE PROJECTION				DRAWING NUMBER: S-D11514		Rev. D
DO NOT SCALE DRAWING				CAD CONTROLLED PART. THE NOMINAL PART GEOMETRY IS CONTROLLED BY THE 3D CAD PART FILE.			



TABLE 1

PART NUMBER	DESCRIPTION	WEIGHT (g)	LENS MOUNT	SEE DRS ICD FOR LENS DIMENSIONS
SL-T5-6622-A10	Viento 10 GigE, 640 x 512, 10 deg HFOV, 35mm, 60Hz, M34	185	M34	1027621-L1#0
SL-T5-6612-A12	Viento 10 GigE 640, 12 deg HFOV, 30mm, 60Hz	123	M24	1027621-LD#0
SL-T5-6602-A18	Viento 10 GigE, 640 x 512, 18 deg HFOV, 20mm, 60Hz	96	M19	1027621-L3#0
SL-T5-6602-A25	Viento 10 GigE, 640 x 512, 25 deg HFOV, 15mm, 60Hz	93	M19	1027621-L6#0
SL-T5-6612-A40	Viento 10 GigE, 640 x 512, 40 deg HFOV, 9.3mm, 60Hz	106	M24	1027621-LH#0
SL-T5-6602-A50	Viento 10 GigE, 640 x 512, 50 deg HFOV, 7.7mm, 60Hz	88	M19	1027621-LA#0
SL-T5-6602-A70	Viento 10 GigE 640, 70 deg HFOV, 5.5mm, 60Hz	90	M19	1027621-LM#0
SL-T5-6602-A90	Viento 10 GigE 640, 90 deg HFOV, 4.3mm, 60Hz	91	M19	1027621-LN#0
SL-T5-6622-N10	Viento 10 GigE, 640 x 512, 10 deg HFOV, NO LENS, 60Hz, M34	83	M34	1027621-01#0
SL-T5-6602-N18	Viento 10 GigE, 640 x 512, 18 deg HFOV, NO LENS, 60Hz	78	M19	1027621-03#0
SL-T5-6602-N25	Viento 10 GigE, 640 x 512, 25 deg HFOV, NO LENS, 60Hz	78	M19	1027621-06#0
SL-T5-6602-N50	Viento 10 GigE, 640 x 512, 50 deg HFOV, NO LENS, 60Hz	78	M19	1027621-0A#0
SL-T5-6602-N70	Viento 10 GigE 640, 70 deg HFOV, No Lens, 60Hz	78	M19	1027621-0M#0
SL-T5-6602-N90	Viento 10 GigE 640, 90 deg HFOV, No Lens, 60Hz	78	M19	1027621-0N#0
SL-T5-6922-A10	Viento 10 GigE, 640 x 512, 10 deg HFOV, 35mm, 9Hz, M34	185	M34	1027621-L1#0
SL-T5-6912-A12	Viento 10 GigE 640, 12 deg HFOV, 30mm, 9Hz	123	M24	1027621-LD#0
SL-T5-6902-A18	Viento 10 GigE, 640 x 512, 18 deg HFOV, 20mm, 9Hz	96	M19	1027621-L3#0
SL-T5-6902-A25	Viento 10 GigE, 640 x 512, 25 deg HFOV, 15mm, 9Hz	93	M19	1027621-L6#0
SL-T5-6912-A40	Viento 10 GigE, 640 x 512, 40 deg HFOV, 9.3mm, 9Hz	106	M24	1027621-LH#0
SL-T5-6902-A50	Viento 10 GigE, 640 x 512, 50 deg HFOV, 7.7mm, 9Hz	88	M19	1027621-LA#0
SL-T5-6902-A70	Viento 10 GigE 640, 70 deg HFOV, 5.5mm, 9Hz	90	M19	1027621-LM#0
SL-T5-6902-A90	Viento 10 GigE 640, 90 deg HFOV, 4.3mm, 9Hz	91	M19	1027621-LN#0
SL-T5-6922-N10	Viento 10 GigE, 640 x 512, 10 deg HFOV, NO LENS, 9Hz, M34	83	M34	1027621-01#0
SL-T5-6902-N18	Viento 10 GigE, 640 x 512, 18 deg HFOV, NO LENS, 9Hz	78	M19	1027621-03#0
SL-T5-6902-N25	Viento 10 GigE, 640 x 512, 25 deg HFOV, NO LENS, 9Hz	78	M19	1027621-06#0
SL-T5-6902-N50	Viento 10 GigE, 640 x 512, 50 deg HFOV, NO LENS, 9Hz	78	M19	1027621-0A#0
SL-T5-6902-N70	Viento 10 GigE 640, 70 deg HFOV, No Lens, 9Hz	78	M19	1027621-0M#0
SL-T5-6902-N90	Viento 10 GigE 640, 90 deg HFOV, No Lens, 9Hz	78	M19	1027621-0N#0

TABLE 2

TENUM 640 PART NUMBER CONFIGURATION

PART NUMBER = 1027621 + [6 DIGIT CONFIGURATION] + 0

LENS	LENS HFOV/LENS MOUNT	SHUTTER	FEATURE BOARD	FRAME RATE	P2 OR P3
0 = NO LENS	1 = 10 °/M34	1 = SHUTTER	0 = NO FEATURE BOARD	6 = 60 Hz	0 = P2
L = LENS	3 = 18 ° /M19		1 = FEATURE BOARD	9 = 9 Hz	1 = P3
	6 = 25 °/M19				
	A = 50 ° /M19				
	D = 12°/M24				
	H = 40 °/M24				
	M = 70 °/M19				
	N = 90 °/M19				

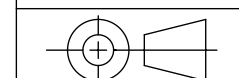
Product Export Classification Control Number(ECCN): 60/30Hz 6A003.b.4.b 9Hz: 6A993

This document does not contain export-controlled technology.

UNLESS OTHERWISE SPECIFIED DIM ARE IN MILLIMETERS

X ± 2.5 mm	ANGLES X ± 1°
X.X ± 0.3 mm	X.X ± 0.5°
X.XX ± 0.13 mm	

THIRD ANGLE PROJECTION



DO NOT SCALE DRAWING

PROPRIETARY AND CONFIDENTIAL
 THE INFORMATION CONTAINED IN THIS DRAWING IS THE SOLE PROPERTY OF SIERRA OLYMPIA TECHNOLOGIES, INC. ANY REPRODUCTION IN PART OR AS A WHOLE WITHOUT THE WRITTEN PERMISSION OF SIERRA OLYMPIA TECHNOLOGIES, INC. IS PROHIBITED.

MATERIAL: N/A

FINISH: N/A

CAD CONTROLLED PART. THE NOMINAL PART GEOMETRY IS CONTROLLED BY THE 3D CAD PART FILE.



DESCRIPTION: ICD Viento-10 GigE

SIZE	DRAWN BY:	SHEET 5 OF 5
B	D. KAMINSKI	

DRAWING NUMBER:	Rev. D
S-D11514	