

4

3

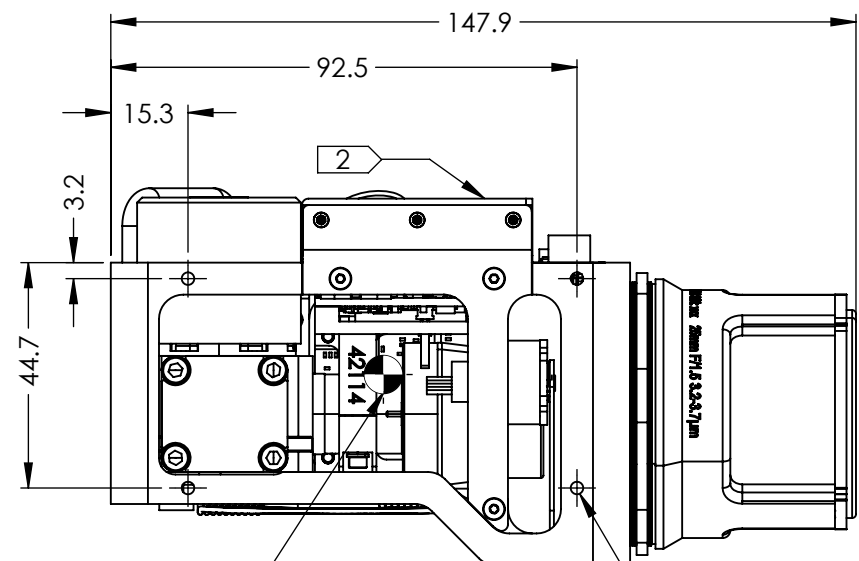
2

1

NOTES:

- 1. UNIT SHOULD BE SUPPORTED BY MULTIPLE M3 MOUNTING HOLES.
- 2. OVERALL THERMAL DISSIPATION REQUIREMENT IS APPROX. 7.5 WATTS. PRIMARY HEAT SINKING SURFACES INDICATED.
- 3. FOR CONNECTOR INFORMATION, REFERENCE ELECTRICAL ICD DOCUMENT NO. S-D03-10577.
- 4. APPROXIMATE MASS = 541g
- 5. RECOMMENDED WINDOW TILT: VERTICAL 8.8°

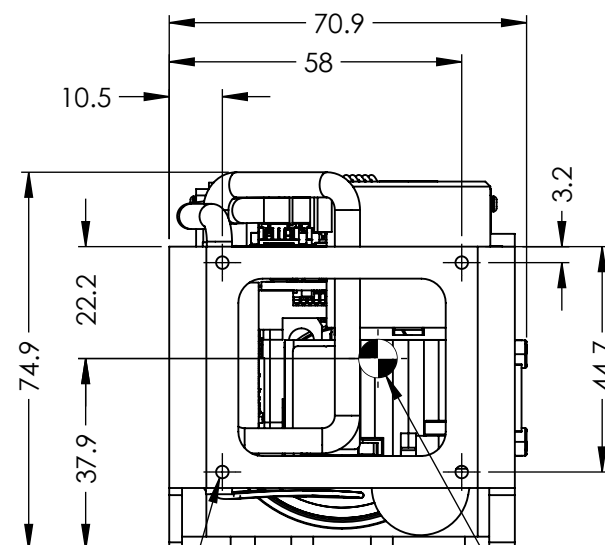
REVISIONS					
ZONE	REV.	DESCRIPTION	ECO	DATE	ENGINEER
	D	ADMINISTRATIVE - 3D CAD FORMAT UPDATE, NO CHANGE TO GEOMETRY OR INTERFACE REQUIREMENTS	1713	2024-02-28	C. JOHNSON



APPROXIMATE CENTER OF MASS

**RIGHT**

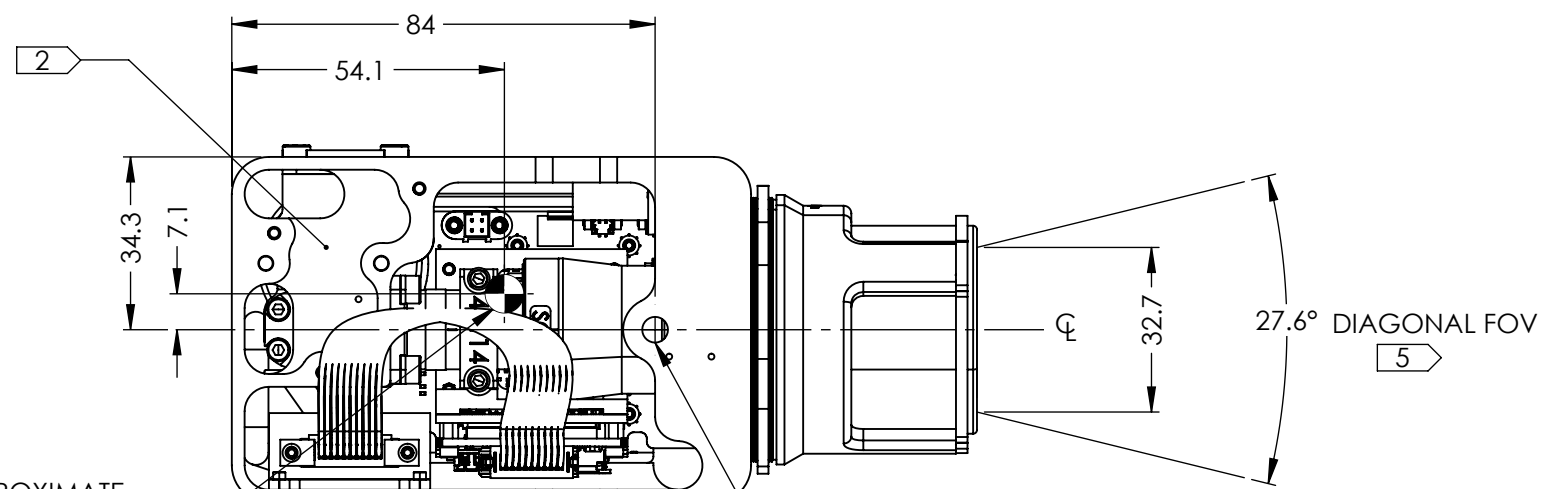
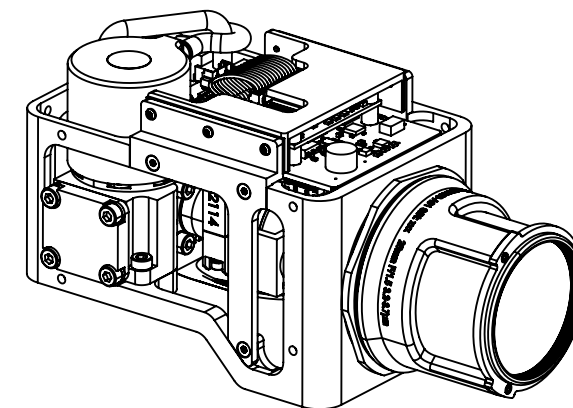
4X M3X0.5 MOUNTING HOLES BOTH SIDES



4X M3X0.5 MOUNTING HOLES

**BACK**

APPROXIMATE CENTER OF MASS



APPROXIMATE CENTER OF MASS

**BOTTOM**

1/4-20 TRIPOD MOUNT

Product Export Classification Control Number(ECCN): 6A003.b.4.a. This document does not contain export-controlled technology	<b>PROPRIETARY AND CONFIDENTIAL</b> THE INFORMATION CONTAINED IN THIS DRAWING IS THE SOLE PROPERTY OF SIERRA OLYMPIA TECHNOLOGIES, INC. ANY REPRODUCTION IN PART OR AS A WHOLE WITHOUT THE WRITTEN PERMISSION OF SIERRA OLYMPIA TECHNOLOGIES, INC. IS PROHIBITED.	DIMENSIONS ARE IN MILLIMETERS TOLERANCES: +/- 0.254mm (0.01 in) +/- 1deg EXCEPT WHERE NOTED.	CAD CONTROLLED PART. THE NOMINAL PART GEOMETRY IS CONTROLLED BY THE 3D CAD PART FILE.		
			DO NOT SCALE DRAWING		
COMMENTS:			DESCRIPTION: Mechanical ICD Ventus-OGI 25mm		SHEET 1 OF 1
			SIZE <b>B</b>	DRAWN BY: C. JOHNSON	
			DRAWING NUMBER: S-D11568		

4

3

2

1