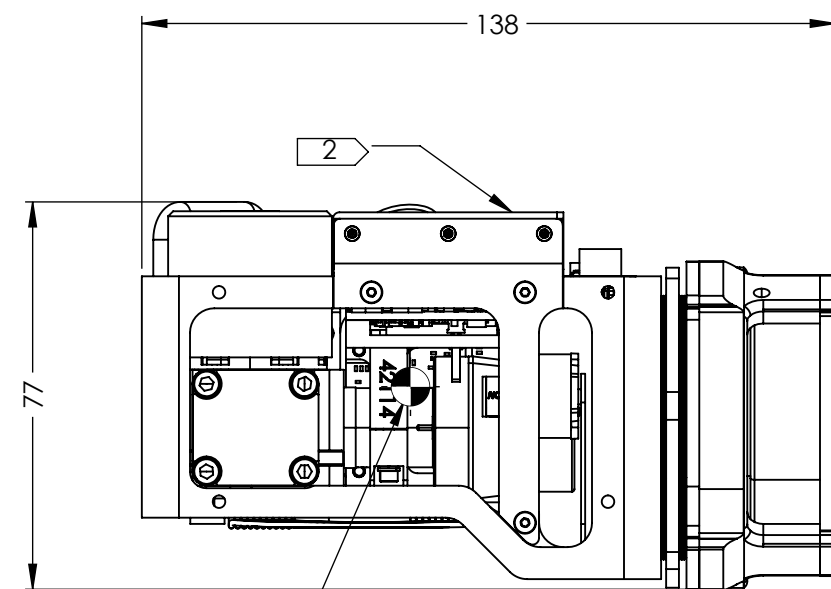


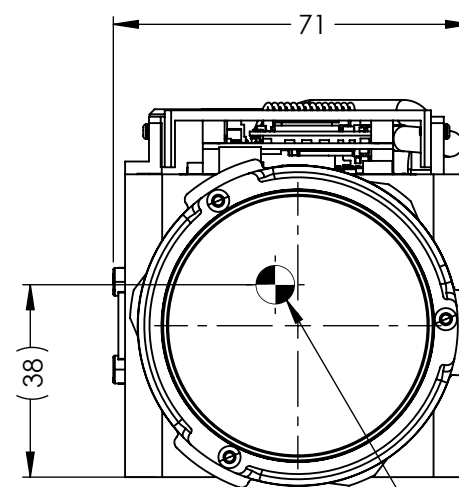
NOTES:

- 1. UNIT SHOULD BE SUPPORTED BY MULTIPLE M3 MOUNTING HOLES.
- 2. OVERALL THERMAL DISSIPATION REQUIREMENT IS APPROX. 7.5 WATTS. PRIMARY HEAT SINKING SURFACES INDICATED.
- 3. FOR CONNECTOR INFORMATION, REFERENCE ELECTRICAL ICD DOCUMENT NO. S-D03-10577.
- 4. APPROXIMATE MASS = 570g.
- 5. RECOMMENDED WINDOW TILT: VERTICAL 4.5°

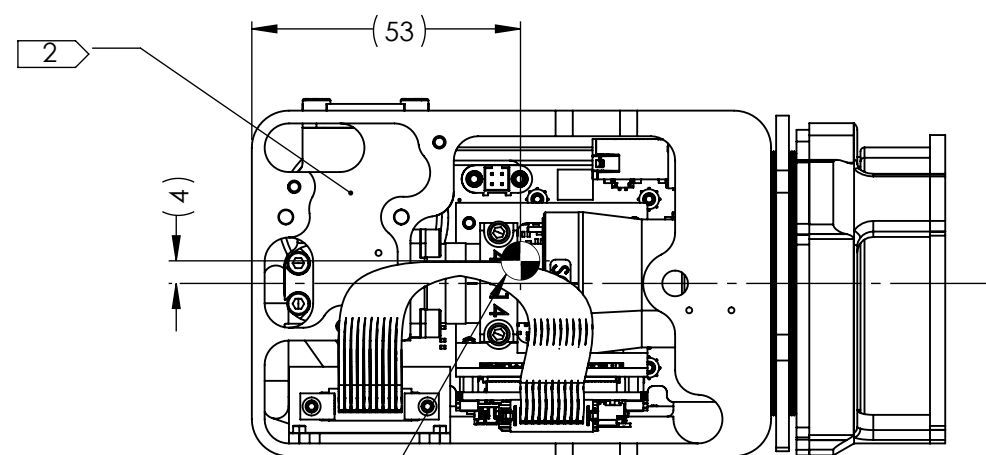
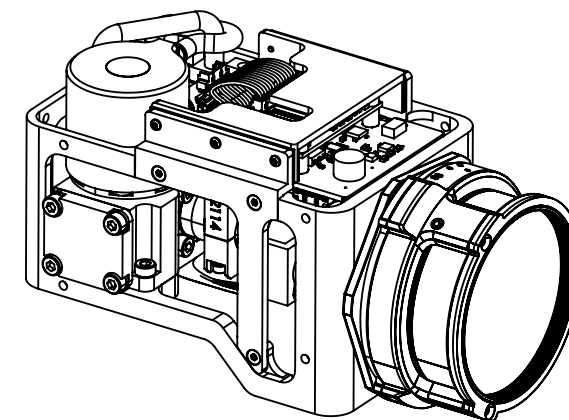
REVISIONS					
ZONE	REV.	DESCRIPTION	ECO	DATE	ENGINEER
	D	ADMINISTRATIVE - 3D CAD FORMAT UPDATE, NO CHANGE TO GEOMETRY OF INTERFACE REQUIREMENTS	1713	2024-02-28	C. JOHNSON
	E	UPDATED C.G. AND FOV	1815	2025-12-12	C. JOHNSON



APPROXIMATE CENTER OF MASS  
**RIGHT**



**FRONT**  
APPROXIMATE CENTER OF MASS



APPROXIMATE CENTER OF MASS  
**BOTTOM**

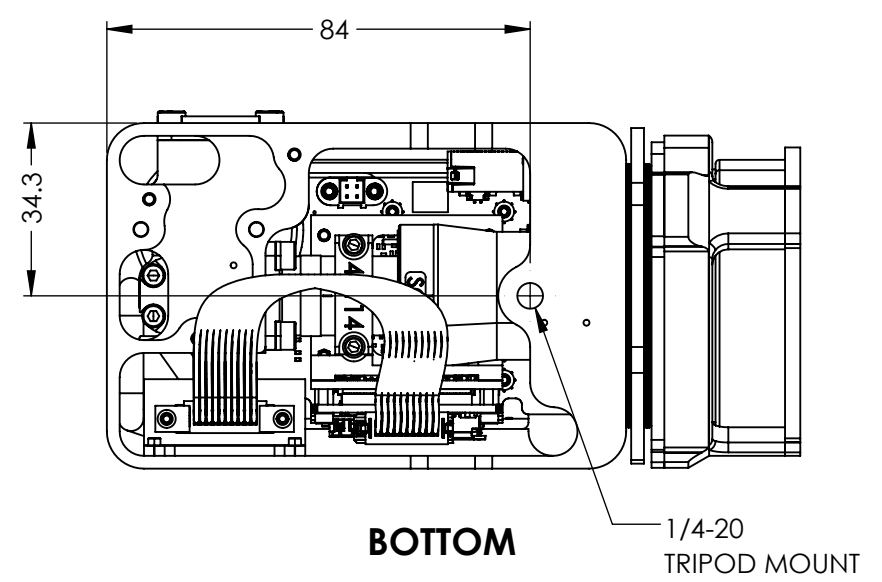
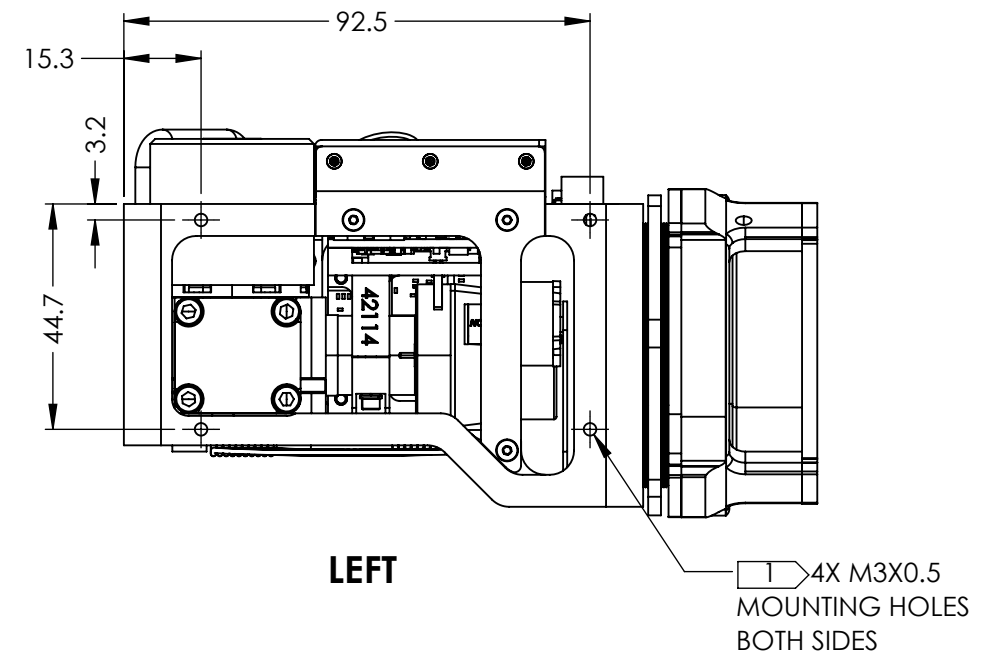
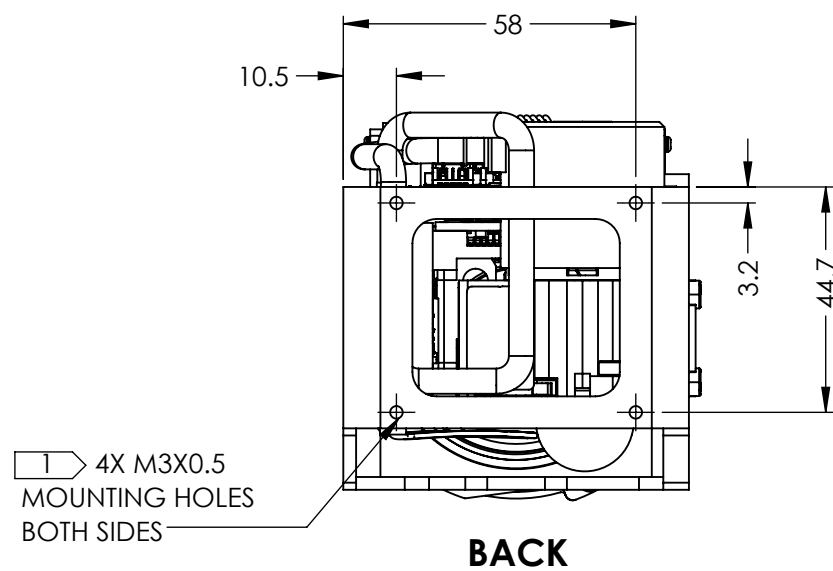
Product Export Classification Control Number(ECCN): 6A003.b.4.a  This document does not contain export-controlled technology.	UNLESS OTHERWISE SPECIFIED DIM ARE IN MILLIMETERS		<b>PROPRIETARY AND CONFIDENTIAL</b> THE INFORMATION CONTAINED IN THIS DRAWING IS THE SOLE PROPERTY OF SIERRA OLYMPIA TECHNOLOGIES, INC. ANY REPRODUCTION IN PART OR AS A WHOLE WITHOUT THE WRITTEN PERMISSION OF SIERRA OLYMPIA TECHNOLOGIES, INC. IS PROHIBITED.  MATERIAL: N/A  FINISH: N/A  CAD CONTROLLED PART. THE NOMINAL PART GEOMETRY IS CONTROLLED BY THE 3D CAD PART FILE.		
	X ± 2.5 mm	ANGLES X ± 1°			
	X.X ± 0.3 mm	X.X ± 0.5°		DESCRIPTION: MECHANICAL ICD VENTUS-OGI 50MM	
	X.XX ± 0.13 mm			SIZE <b>B</b>	DRAWN BY: C. JOHNSON
THIRD ANGLE PROJECTION				DRAWING NUMBER: S-D11584	
		DO NOT SCALE DRAWING		Rev. E	

4

3

2

1



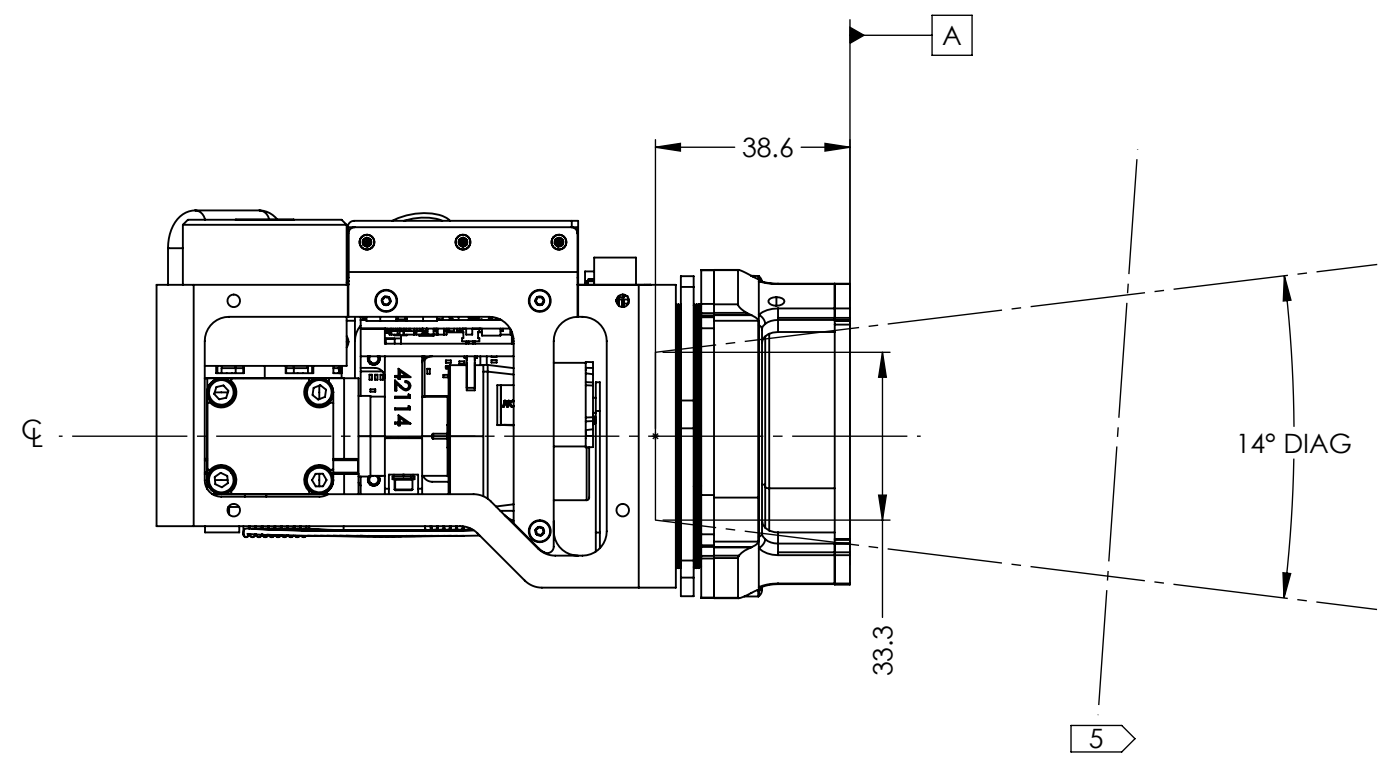
Product Export Classification Control Number(ECCN): 6A003.b.4.a  This document does not contain export-controlled technology.	UNLESS OTHERWISE SPECIFIED DIM ARE IN MILLIMETERS		<b>PROPRIETARY AND CONFIDENTIAL</b> THE INFORMATION CONTAINED IN THIS DRAWING IS THE SOLE PROPERTY OF SIERRA OLYMPIA TECHNOLOGIES, INC. ANY REPRODUCTION IN PART OR AS A WHOLE WITHOUT THE WRITTEN PERMISSION OF SIERRA OLYMPIA TECHNOLOGIES, INC. IS PROHIBITED.  MATERIAL: N/A  FINISH: N/A  CAD CONTROLLED PART. THE NOMINAL PART GEOMETRY IS CONTROLLED BY THE 3D CAD PART FILE.	<b>SIERRA-OLYMPIA TECHNOLOGIES INC.</b> DESCRIPTION: <b>MECHANICAL ICD VENTUS-OGI 50MM</b> SIZE: <b>B</b> DRAWN BY: C. JOHNSON SHEET 2 OF 3 DRAWING NUMBER: S-D11584 Rev. E
	X ± 2.5 mm	ANGLES X ± 1°		
	X.X ± 0.3 mm	X.X ± 0.5°		
	X.XX ± 0.13 mm			
THIRD ANGLE PROJECTION				
DO NOT SCALE DRAWING				

4

3

2

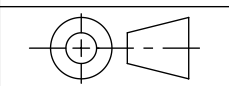
1



ENTRANCE PUPIL LOCATION = 38.6mm BEHIND DATUM A  
 ENTRANCE PUPIL DIAMETER = 33.3mm

HFOV	11.0
VFOV	8.8
DFOV	14.0

Product Export Classification Control Number(ECCN): 6A003.b.4.a  This document does not contain export-controlled technology.	UNLESS OTHERWISE SPECIFIED DIM ARE IN MILLIMETERS		<b>PROPRIETARY AND CONFIDENTIAL</b> THE INFORMATION CONTAINED IN THIS DRAWING IS THE SOLE PROPERTY OF SIERRA OLYMPIA TECHNOLOGIES, INC. ANY REPRODUCTION IN PART OR AS A WHOLE WITHOUT THE WRITTEN PERMISSION OF SIERRA OLYMPIA TECHNOLOGIES, INC. IS PROHIBITED.	<b>SIERRA-OLYMPIA TECHNOLOGIES INC.</b>			
	X ± 2.5 mm	ANGLES X ± 1°				MATERIAL: N/A	
	X.X ± 0.3 mm	X.X ± 0.5°	FINISH: N/A	DESCRIPTION: MECHANICAL ICD VENTUS-OGI 50MM	SIZE: B	DRAWN BY: C. JOHNSON	SHEET 3 OF 3
	X.XX ± 0.13 mm		CAD CONTROLLED PART. THE NOMINAL PART GEOMETRY IS CONTROLLED BY THE 3D CAD PART FILE.	DRAWING NUMBER: S-D11584	Rev. E		



DO NOT SCALE DRAWING